

HUDSON VALLEY REGION DISTRESS CRITERIA STATISTICAL REPORT



April 2015

HUDSON VALLEY REGIONAL COUNCIL

3 Washington Center, Newburgh NY 12550

Contents

I.	INTRODUCTION	1
II.	HUDSON VALLEY REGION DISTRESS	4
A.	REGIONAL DISTRESS OVERVIEW	4
B.	DUTCHESS COUNTY	7
	City of Poughkeepsie	8
	City of Beacon.....	11
	Village of Tivoli	13
C.	ORANGE COUNTY	15
	City of Newburgh.....	16
	City of Middletown.....	18
	City of Port Jervis.....	20
D.	PUTNAM COUNTY	22
E.	ROCKLAND COUNTY	24
	Spring Valley Area.....	26
	Village of Haverstraw	28
F:	SULLIVAN COUNTY.....	30
	Village and Town of Liberty	32
	Village of Monticello.....	34
G:	ULSTER COUNTY.....	36
	City of Kingston.....	37
	Village of Ellenville.....	39
	Town of Plattekill.....	41
H:	WESTCHESTER COUNTY	43
	City of Mount Vernon.....	44
	City of Yonkers.....	46
	Village of Peekskill	48
	Village of Ossining	50
III.	APPENDICES.....	52
A.	LEGEND U.S Census Bureau New York 2010 Census - Census Tract Reference Maps	52
	REFERENCES	53

HUDSON VALLEY REGION DISTRESS CRITERIA STATISTICAL REPORT

I. INTRODUCTION

Through strategic investments that further job creation and encourage private investment, the U.S. Department of Commerce’s Economic Development Administration (EDA) supports development in economically distressed areas throughout the United States.

The U.S. EDA's investment policy is designed to establish a foundation for sustainable job growth and the building of durable regional economies throughout the United States. This foundation builds upon two key economic drivers - innovation and regional collaboration. Innovation is key to global competitiveness, new and better jobs, a resilient economy, and the attainment of national economic goals. Regional collaboration is essential for economic recovery because regions are the centers of competition in the new global economy and those that work together to leverage resources and use their strengths to overcome weaknesses will fare better than those that do not. ¹

During Fiscal Year 2013, EDA invested \$21,053,085 in 24 projects in the State of New York. These projects are expected to create or retain 1,383 jobs and leverage \$62,425,000 in private investment, according to grantee estimates. ²

Table 1: 2013 EDA INVESTMENTS in NEW YORK

Program	# of Grants	EDA Funds
Economic Adjustment Assistance	1	\$300,000
Public Works	4	\$4,703,000
Disaster Relief	7	\$15,328,085
Planning	11	\$622,000
Technical Assistance	1	\$100,00
Total		\$21,053,085

This report is intended to provide a snapshot of the economic distress in the Hudson Valley region based on 2013 data. Identifying the communities within the region that exhibit economic distress, as defined by the EDA, is important in determining eligibility for EDA investment assistance. EDA grants are designed to leverage existing regional assets to support the implementation of economic development strategies that advance new ideas and creative approaches to advance economic prosperity in distressed communities.

¹ <http://www.eda.gov/about/>

² <http://www.eda.gov/annual-reports/fy2013/states/ny.htm>

For a project to be eligible for investment assistance under parts 305 or 307 of EDA regulations the project must be located in a region that, on the date EDA receives an application for investment assistance, is subject to one (or more) of the following economic distress criteria:

- (i) An unemployment rate that is, for the most recent 24-month period for which data are available, at least 1 percentage point greater than the national average unemployment rate;
- (ii) Per capita income that is, for the most recent period for which data are available, 80 percent or less of the national average per capita income; or
- (iii) A special need, as determined by EDA.

For the purposes of this report, economic distress is defined by any combination of:

- An average 24- month unemployment rate above the national average as calculated by the Bureau of Labor Statistics – Local Area Unemployment Statistics.³
- An average Per Capita Money Income (PCMI) level below the national average as measured by the U.S Census Bureau’s American Communities Survey.⁴
- An average Per Capita Personal Income (PCPI) level below the national average as measured by the U.S Department of Commerce, Bureau of Economic Analysis.⁵

Economic distress that is based on both employment and income are the primary basis of this report. Distress statistical reports are only provided for those areas in the region that exhibit both employment and income distress.

Graphics, however, are provided for each county in the region that exhibits either one or the other - employment or income distress. Distress statistical reports are not provided for areas within the region that exhibit just employment or income distress. The Hudson Valley Regional Council can work with counties and municipalities across the region to gather additional income and employment statistics to create reports for EDA funding applications.

Economic distress statistics in this report were gathered using a tool called [StatsAmerica](#), specifically the [Measuring Distress](#) tool⁶. StatsAmerica is a service of the [Indiana Business Research Center](#) (IBRC) at Indiana University's Kelley School of Business. With support from the EDA, the IBRC developed a unique and useful set of tools and reports, and it provided access to information about other EDA-funded projects. Thousands of data items and data sets are obtained from dozens of federal and state sources, along with some commercial or private source data. While StatsAmerica adds value to these data through easy access and functionality, the direct agency source of the data on every table, profile or map is acknowledged. The goal of StatsAmerica is to provide actionable data for economic developers to use in site requests, developing metrics, grant writing and strategic planning.

³ <http://www.bls.gov/lau/#tables>

⁴ http://www.census.gov/acs/www/data_documentation/data_main/

⁵ <http://www.bea.gov/regional/downloadzip.cfm>

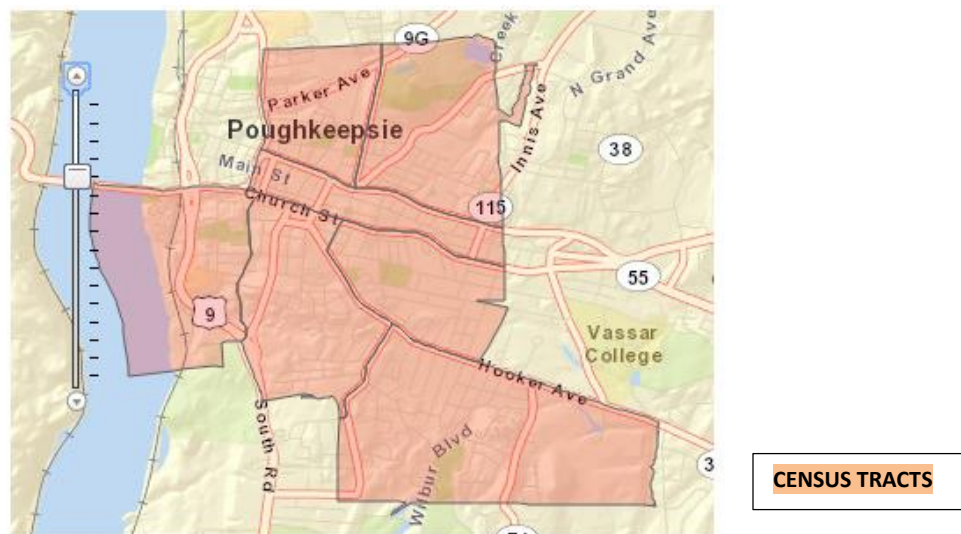
⁶ <http://www.statsamerica.org/distress/distress.aspx>

Using data assembled from the U.S. Bureau of Census, Labor Statistics, and Economic Analysis, unemployment rates and per capita money income (PCMI) are provided for the Hudson Valley's seven-county region, which includes Dutchess, Orange, Putnam, Rockland, Sullivan, Ulster and Westchester. Unemployment data and PCMI are also provided for each of the seven counties individually, as well as the cities and urban centers within each of the counties. Particular census with economic distress are identified within those cities and urban centers.

Each of the tables in this report provides unemployment and income data. For unemployment data the threshold calculation is the difference between the unemployment rate for the geographic area – i.e. the county or the census tracts selected – and the national unemployment rate. For example if the unemployment rate for Dutchess County is 6.12 percent and the U.S figure is 6.77, the threshold calculation is -0.65. This indicates that the county as a whole does not exhibit economic distress. Income data comes from one of three sources, including the 3-year and 5-year American Community Survey (ACS) data and Bureau of Economic Analysis data. For PCMI the selected area's per capita value is divided by the national per capita income and shown as a percentage share of the national figure. For example, Dutchess County's PCMI of \$33,252 is 119.25 percent of the national PCMI of \$27,884, based on the 2013 ACS.

Census tract maps are provided for each city, urban center or area that exhibits economic distress. Census tract maps were generated using the U.S Census Bureau [New York 2010 Census - Census Tract Reference Maps](#)⁷. Census tract numbers on these maps correspond to the census tract numbers in the Distress Criteria Statistical Report for each area. A legend for the Census Tract Reference Maps is provided in Appendix A.

Maps of the economically distressed census tracts are also provided as generated by [StatsAmerica](#)⁸. The StatsAmerica census tract maps highlight the census tracts in a light orange brown shaded area. An example is provided below in Figure 1.



⁷ https://www.census.gov/geo/maps-data/maps/2010ref/st36_tract.html

⁸ <http://www.statsamerica.org/distress/distress.aspx>

Figure 1: CENSUS TRACT MAP – RELEVANT TRACTS SHADED IN A LIGHT BROWN

II. HUDSON VALLEY REGION DISTRESS

A. REGIONAL DISTRESS OVERVIEW

While unemployment rates have dropped and per capita income in the Hudson Valley looks healthy, there are still pockets of economic distress throughout the region. Similar to poverty, unemployment tends to be higher in central cities, lower in the suburban ring, and higher again in rural areas.

The region’s overall unemployment rate fell steadily in the 12-month period ending in December 2014, from a high of 6.6 percent in February 2014 to a low of 4.7 percent in December⁹.

Table 2: HUDSON VALLEY REGION UNEMPLOYMENT RATE

Year	Jan	Feb	March	April	May	June	July	August	Sept	Oct	Nov	Dec
2014	6.3%	6.6%	6.0%	4.8%	5.3%	5.3%	5.7%	5.4%	5.1%	5.1%	5.0%	4.7%

In addition, the U.S. Bureau of Labor Statistic 24-Month average unemployment rate for the Hudson Valley region, ending December 2014, was 6.02 percent. This is a slightly lower (-0.75) than the national unemployment rate of 6.77 percent for the same time period. Per capita money income for the Hudson Valley region as a whole in 2013 was significantly greater than the U.S. per capita income. The region’s per capita personal income is similarly greater than U.S per capita personal income.

Table 3: HUDSON VALLEY REGION DISTRESS CRITERIA STATISTICAL REPORT

Hudson Valley Region Distress Criteria Statistical Report	Hudson Valley Region	U.S.	Threshold Calculations
24-Month Average Unemployment Rate(BLS) ending December 2014	6.02%	6.77%	-0.75
2013 Per Capita Money Income (3 Year ACS)	\$38,478	\$27,884	138%
2013 Per Capita Money Income (5 Year ACS)	\$38,972	\$28,155	138%
2013 Per Capita Personal Income (BEA)	\$62,216	\$44,765	139%
2000 Per Capita Money Income (Decennial Census)	\$29,384	\$21,587	136%

Sources: U.S. Bureaus of Census, Labor Statistics, and Economic Analysis; Calculations generated by StatsAmerica March 9, 2015

Reference Date: 12 / 2014 (All data elements refer to this date or earlier.)

⁹ NYS Department of Labor Local Area Unemployment Statistics Program <http://www.labor.ny.gov/stats/laus.asp>

Region Consists of: Dutchess Co. NY, Orange Co. NY, Putnam Co. NY, Rockland Co. NY, Sullivan Co. NY, Ulster Co. NY, Westchester Co. NY
Report Date: 3/9/2015 12:59:26 PM

The only county in the region that exhibits economic distress as a whole is Sullivan County, as depicted in Table 4. Sullivan County has an unemployment rate that is 1.13 percent greater than the national rate. All four income measures demonstrate income distress in Sullivan County with three of the four being below 90 percent of the U.S. income.

Dutchess, Putnam, Rockland and Westchester Counties show healthy employment and income figures. While not quite as economically healthy as other counties in the region, Orange and Ulster Counties are about on par with the U.S averages.

Table 4: HUDSON VALLEY COUNTY DISTRESS CRITERIA REPORT

Distress Criteria Statistical Report										
Economic Distress Criteria—Geographic Components										
	24 Month Unemp	Threshold Calculation	ACS 3-Year PCMI	Threshold Calculation	BEA PCPI	Threshold Calculation	Census PCMI	Threshold Calculation	ACS 5-Year PCMI	Threshold Calculation
Dutchess County	6.12	-0.65	\$33,252	119.3	\$49,627	110.9	\$23,940	110.9	\$33,594	119.3
Orange County	6.51	-0.26	\$30,295	108.6	\$43,788	97.8	\$21,597	100	\$30,583	108.6
Putnam County	5.31	-1.46	\$41,101	147.4	\$58,955	131.7	\$30,127	139.6	\$40,309	143.2
Rockland County	5.47	-1.3	\$33,755	121.1	\$56,657	126.6	\$28,082	130.1	\$34,591	122.9
Sullivan County	7.9	1.13	\$24,747	88.7	\$41,197	92	\$18,892	87.5	\$24,963	88.7
Ulster County	7.02	0.25	\$30,163	108.2	\$44,527	99.5	\$20,846	96.6	\$30,442	108.1
Westchester County	5.77	-1	\$47,237	169.4	\$80,363	179.5	\$36,726	170.1	\$47,984	170.4

Sources: U.S. Bureau of Census, Labor Statistics, and Economic Analysis; Calculations generated by StatsAmerica.

Reference Date: 12 / 2014 (All data elements refer to this date or earlier.)

Region Consists of: Dutchess Co. NY, Orange Co. NY, Putnam Co. NY, Rockland Co. NY, Sullivan Co. NY, Ulster Co. NY, Westchester Co. NY

Report Date: 3/9/2015 12:59

B. DUTCHESS COUNTY

Dutchess County shows economic stability, with 3-year and 5-year per capita income of more than 19 percent above average, and slightly lower unemployment than the national average over the 24-month period ending December 2014. As seen in Figure 2, the pockets of economic distress, both high unemployment and low income, are clustered around the urban center of Poughkeepsie and the Village of Tivoli. Figure 2 also demonstrates that employment distress is more common across the county than income distress. Employment distress is seen in the northeast portion of the county as well as southeast and throughout portions of the southwest part of the county.

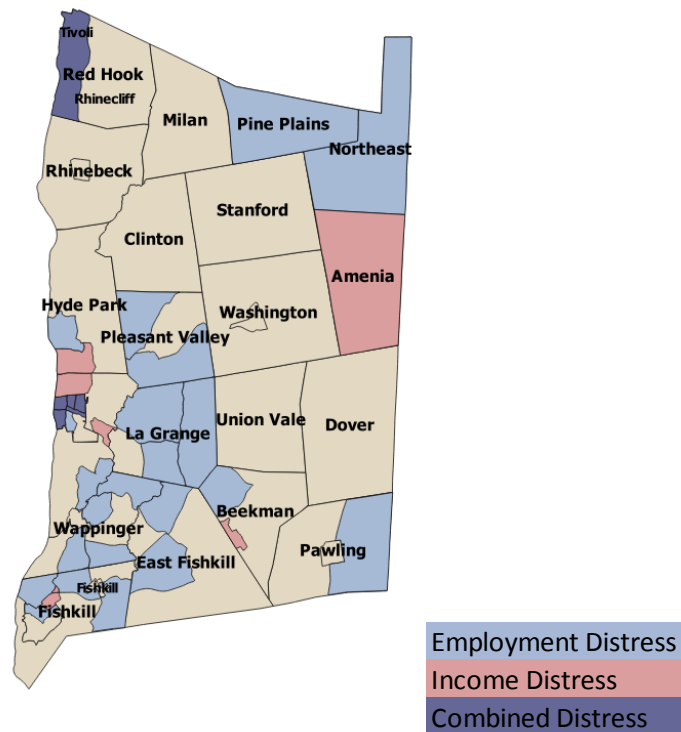


Figure 2: DUTCHESS COUNTY ECONOMIC DISTRESS

Table 5: DISTRESS CRITERIA STATISTICAL REPORT-DUTCHESS COUNTY

Distress Criteria Statistical Report			
Economic Distress Criteria—Primary Elements			
	Dutchess County	U.S.	Threshold Calculations
24-month Average Unemployment Rate (BLS) period ending December 2014	6.12	6.77	-0.65
2013 Per Capita Money Income (3-year ACS)	\$33,252	\$27,884	119.25%
2013 Per Capita Money Income (5-year ACS)	\$33,594	\$28,155	119.32%
2013 Per Capita Personal Income (BEA)	\$49,627	\$44,765	110.86%
2000 Per Capita Money Income (Decennial Census)	\$23,940	\$21,587	110.90%

Source: U.S. Census Bureau American Community Survey; Calculations generated by StatsAmerica.

Reference Date: 12 / 2014 (All data elements refer to this date or earlier.)

Region Consists of: Dutchess Co. NY

Report Date: 3/9/2015 15:13

City of Poughkeepsie

Seven census tracts in the City of Poughkeepsie exhibit economic distress as summarized in Table 6. In these areas, both significant employment and income distress are prevalent. Unemployment rates are over 12 points higher in some areas, and income levels are close to half the national PCMI average.

Table 6 : DISTRESS CRITERIA STATISTICAL REPORT-CITY of POUGHKEEPSIE, DUTCHESS COUNTY

	City of Poughkeepsie	U.S.	Threshold Calculations	
2013 Unemployment Rate (5-Year ACS)	16.2	9.7	6.5	
2013 Per Capita Money Income (5-Year ACS)	\$20,738	\$28,155	73.66%	
Economic Distress Criteria—Geographic Components				
Census Tracts	Unemp. Rate 2013 ACS	Threshold Calculation	PCMI 2013 ACS	Threshold Calculation
Tract 2201.00 Dutchess, NY	22.3	12.6	\$16,888	60
Tract 2202.01 Dutchess, NY	22.1	12.4	\$15,508	55.1
Tract 2203.00 Dutchess, NY	19.4	9.7	\$16,653	59.1
Tract 2207.00 Dutchess, NY	13.7	4	\$23,719	84.2
Tract 2208.01 Dutchess, NY	12.7	3	\$32,859	116.7
Tract 2209.01 Dutchess, NY	11.4	1.7	\$24,953	88.6
Tract 2211.00 Dutchess, NY	12	2.3	\$15,147	53.8

Source: U.S. Census Bureau American Community Survey; Calculations generated by StatsAmerica
 Distress Criteria Statistical Report

Reference Date: All data are from the 2008-2012 Census ACS estimates

Region Consists of: 36027220100, 36027220201, 36027220300, 36027220700, 36027220801, 36027220901, 36027221100

Report Date: 3/10/2015 13:33



City of Poughkeepsie

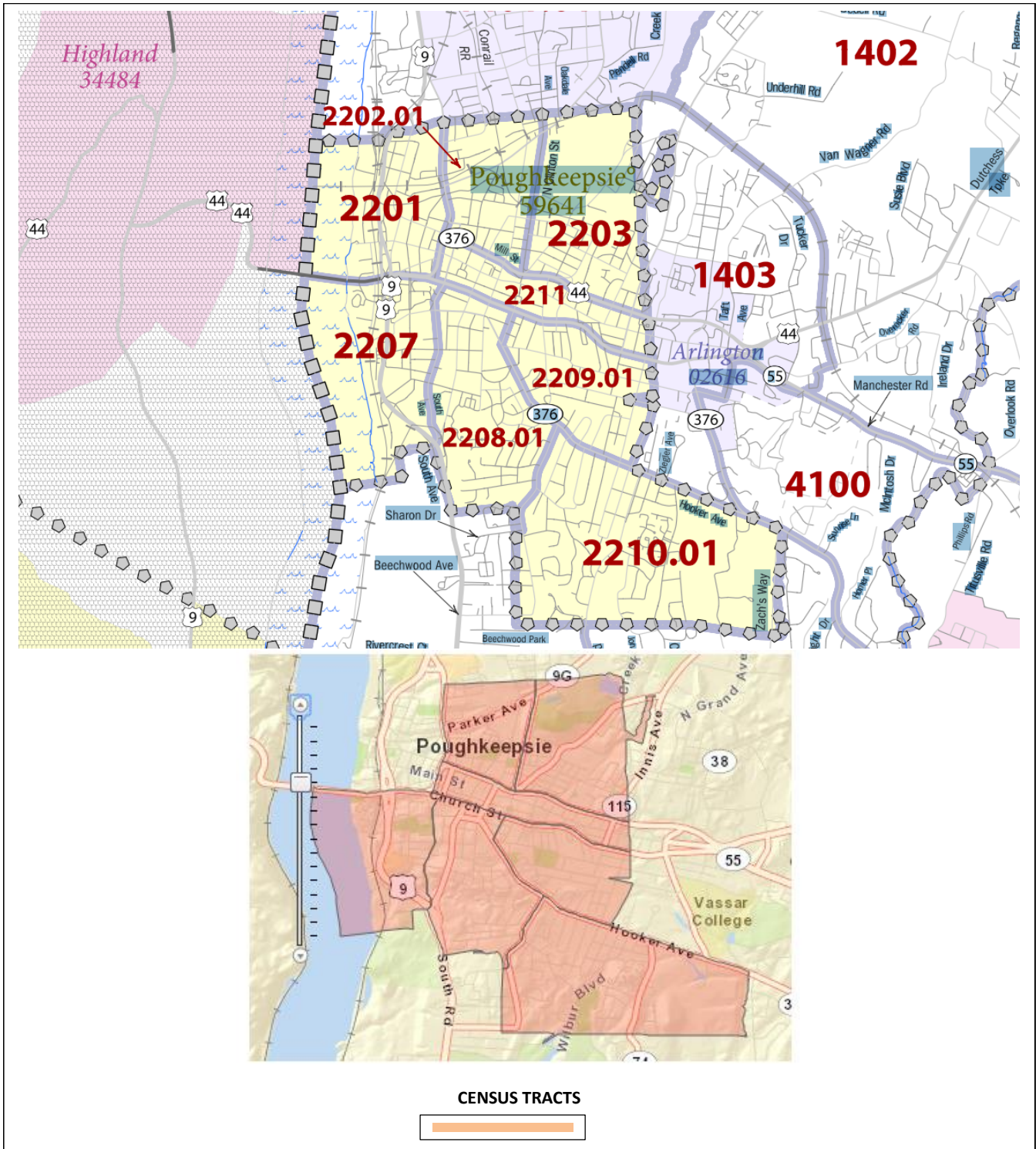


Figure 3: CITY OF POUGHKEEPSIE ECONOMICALLY DISTRESSED CENSUS TRACTS

City of Beacon

The City of Beacon exhibits unemployment and income distress in tow of the cities census tract. These two tracts have an unemployment rate almost 3 percentage points greater than the national average and a PCMI that is less than 80 percent. One particular tract has a PCMI of only 32 per cent the national number. The a census tract that lies between the two that demonstrate distress, as depicted in Figure 4, does exhibit employment distress however it does not show income distress.

Table 7: DISTRESS CRITERIA STATISTICAL REPORT-CITY of BEACON, DUTCHESS COUNTY

Economic Distress Criteria—Primary Elements				
	Beacon	U.S.	Threshold Calculations	
2013 Unemployment Rate (5-Year ACS)	12.6	9.7	2.9	
2013 Per Capita Money Income (5-Year ACS)	\$22,193	\$28,155	78.82%	
Economic Distress Criteria—Geographic Components				
Census Tracts	Unemp. Rate 2013 ACS	Threshold Calculation	PCMI 2013 ACS	Threshold Calculation
Tract 2102.01 Dutchess, NY	12.6	2.9	\$27,239	96.7
Tract 6400.02 Dutchess, NY	11.3	1.6	\$9,031	32.1

Sources: U.S. Bureaus of Census, Labor Statistics, and Economic Analysis; Calculations generated by StatsAmerica. Distress Criteria Statistical Report

Reference Date: All data is from Census ACS Estimates

Region Consists of: 36027210201, 36027640002

Report Date: 4/7/2015 10:46

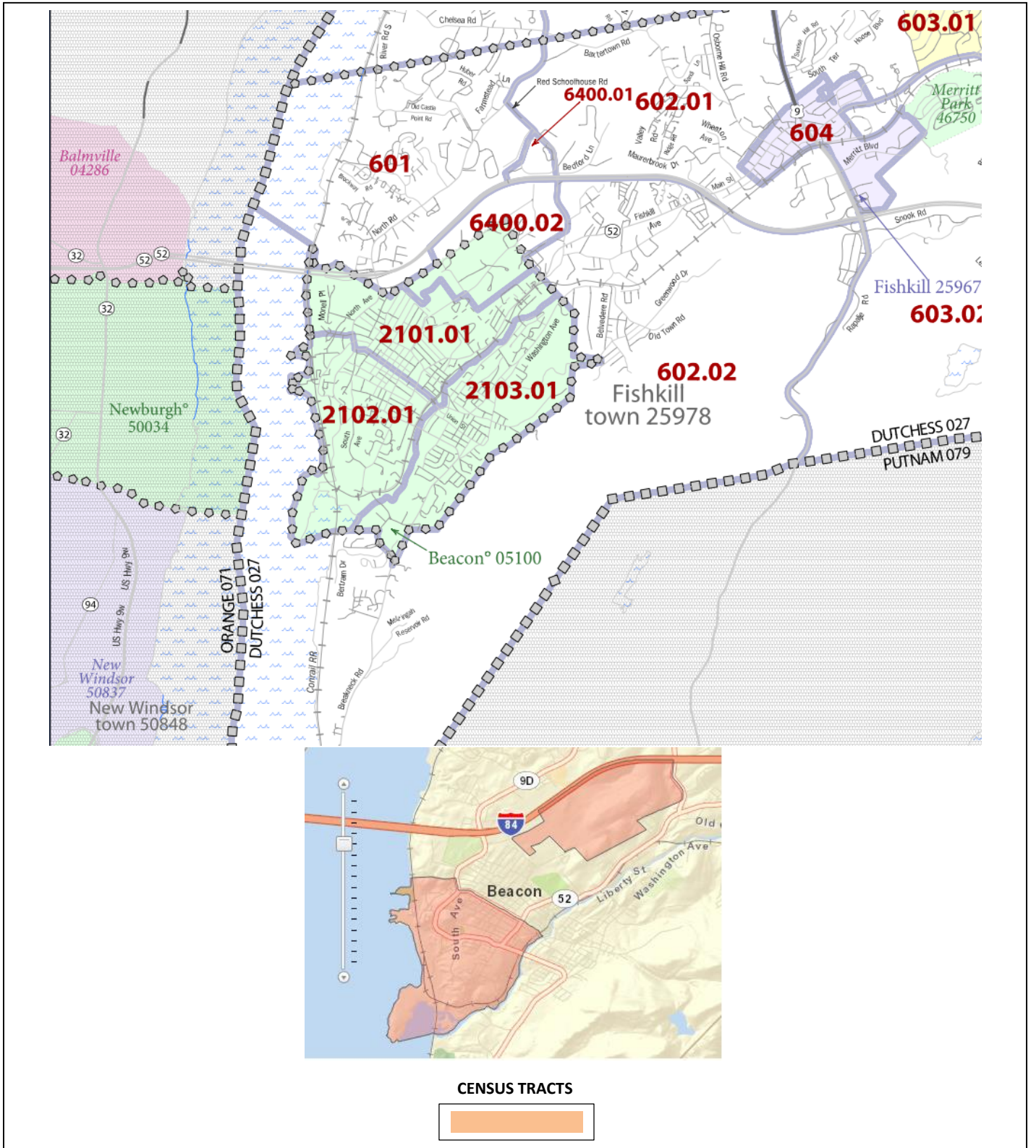


Figure 4: CITY OF BEACON ECONOMICALLY DISTRESSED CENSUS TRACTS

Village of Tivoli

The census tract that envelops the Village of Tivoli and the surrounding area exhibits economic distress with unemployment being slightly above the national average and PCMI significantly lower.

Table 8: DISTRESS CRITERIA STATISTICAL REPORT:TIVOLI-BARRYTOWN, DUTCHESS COUNTY

Economic Distress Criteria—Primary Elements				
	Tivoli - Barrytown	U.S.	Threshold Calculations	
2013 Unemployment Rate (5-Year ACS)	9.9	9.7	0.2	
2013 Per Capita Money Income (5-Year ACS)	\$16,075	\$28,155	57.09%	
Economic Distress Criteria—Geographic Components				
Census Tract	Unemp. Rate 2013 ACS	Threshold Calculation	PCMI 2013 ACS	Threshold Calculation
Tract 1500.03 Dutchess, NY	9.9	0.2	\$16,075	57.1

Source: U.S. Census Bureau American Community Survey; Calculations generated by StatsAmerica.

Distress Criteria Statistical Report

Reference Date: All data are from the 2008-2012 Census ACS estimates

Region Consists of: 36027150003

Report Date: 3/10/2015



Village of Tivoli

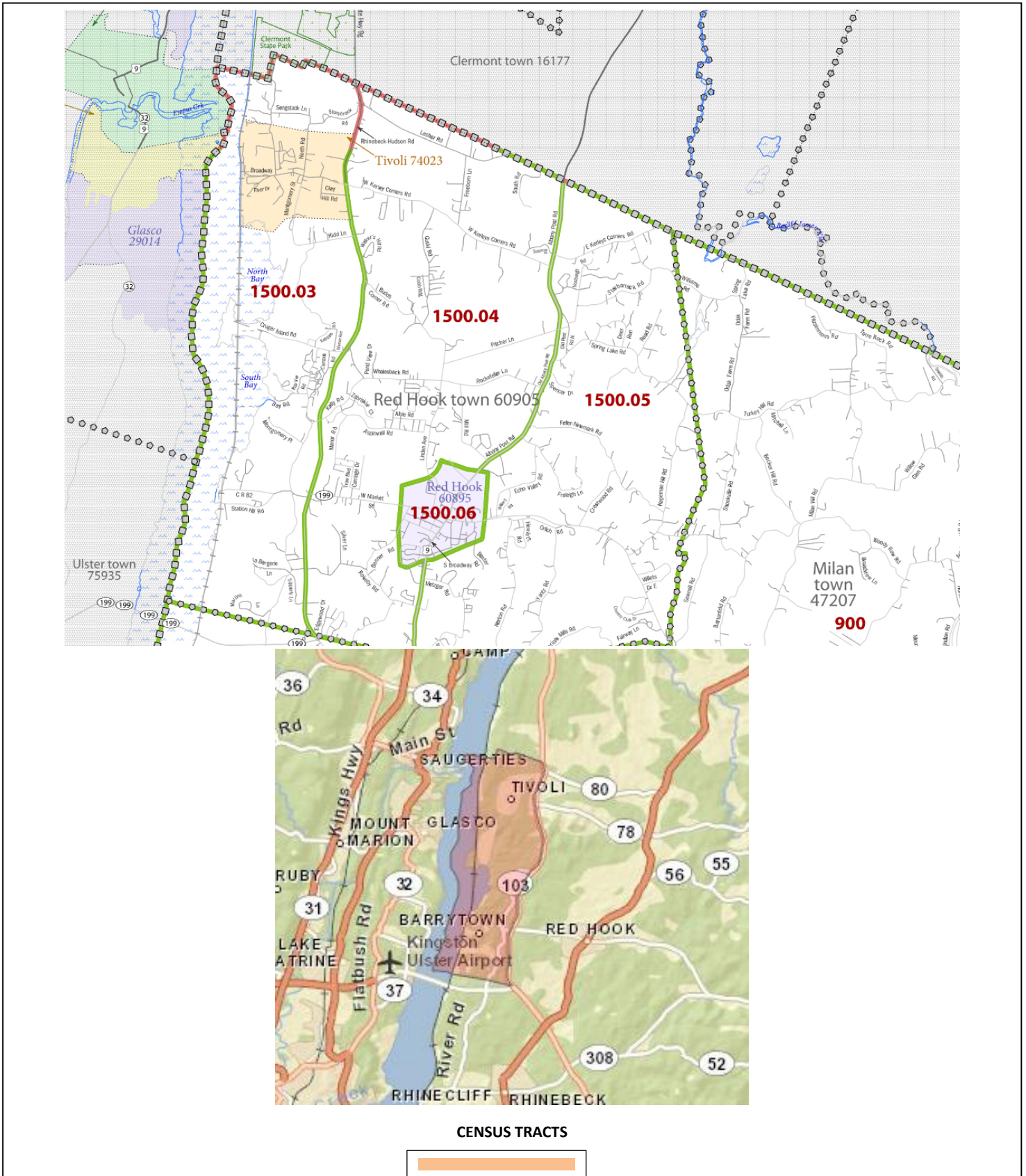


Figure 5: VILLAGE of TIVOLI ECONOMICALLY DISTRESSED CENSUS TRACT

C. ORANGE COUNTY

Orange County as a whole exhibits close to average employment, just slightly lower than the national rate over the 24-month period ending December 2014. Per capita personal income as reported by the BEA is slightly above U.S. averages for 2013. Pockets of employment and income distress alone are scattered throughout the county.

As shown in Tables 9 and 10 the Cities of Newburgh and Middletown continue to show significant economic distress with the cities having either significantly higher unemployment rates or lower incomes presenting both distress criteria.

As seen in Figure 5, Highland Falls and Mount Hope exhibit income distress. Tracts that exhibit both income and employment distress are concentrated around Newburgh, Middletown, and Port Jervis.

Table 9: DISTRESS CRITERIA STATISTICAL REPORT-ORANGE COUNTY

Distress Criteria Statistical Report			
Economic Distress Criteria—Primary Elements			
	Orange County	U.S.	Threshold Calculations
24-month Average Unemployment Rate (BLS) period ending December 2014	6.51	6.77	-0.26
2013 Per Capita Money Income (3-year ACS)	\$30,295	\$27,884	108.65%
2013 Per Capita Money Income (5-year ACS)	\$30,583	\$28,155	108.62%
2013 Per Capita Personal Income (BEA)	\$49,627	\$44,765	110.86%
2000 Per Capita Money Income (Decennial Census)	\$21,597	\$21,587	100.05%

Source: U.S. Census Bureau American Community Survey; Calculations generated by StatsAmerica.

Reference Date: 12 / 2014 (All data elements refer to this date or earlier.)

Region Consists of: Orange Co. NY

Report Date: 3/9/2015 15:21

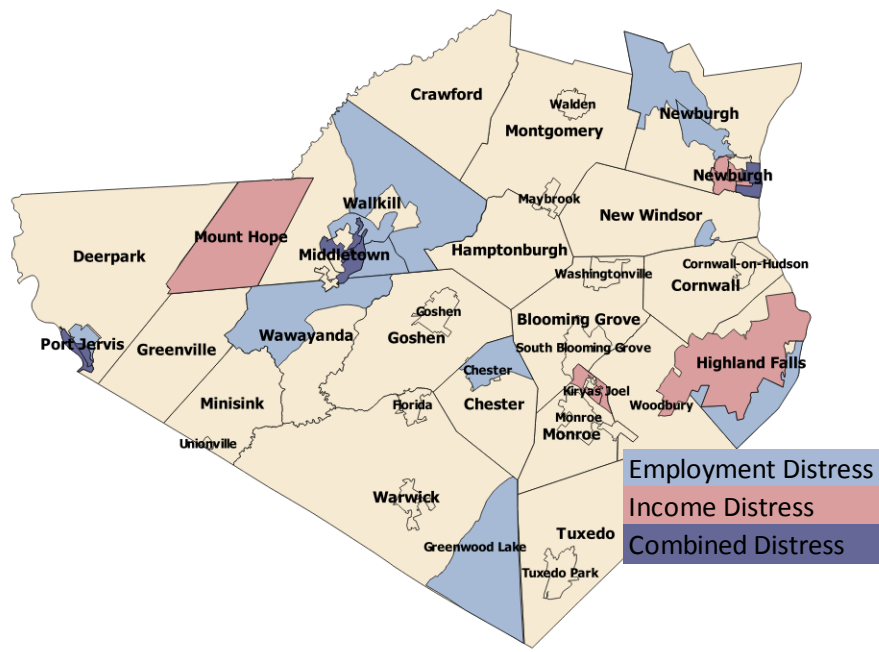


Figure 6: ORANGE COUNTY ECONOMIC DISTRESS

City of Newburgh

The distress levels for the City of Newburgh are shown in Table 9. Two tracts within the city exhibit economic distress, with the two tracts combined having unemployment 6.6 points higher than the U.S. average. One specific tract in the city has unemployment that is 9.6 points higher than the national average. One tract in Newburgh also shows an average income that is 50 percent of the national average.

Table 10: DISTRESS CRITERIA STATISTICAL REPORT-CITY of NEWBURGH, ORANGE COUNTY

Economic Distress Criteria—Primary Elements				
	Newburgh	U.S.	Threshold Calculations	
2013 Unemployment Rate (5-Year ACS)	16.3	9.7	6.6	
2013 Per Capita Money Income (5-Year ACS)	\$15,430	\$28,155	54.80%	
Economic Distress Criteria—Geographic Components				
Census Tracts	Unemp. Rate 2013 ACS	Threshold Calculation	PCMI 2013 ACS	Threshold Calculation
Tract 0004.00 Orange, NY	19.3	9.6	\$16,979	60.3
Tract 0005.01 Orange, NY	11.8	2.1	\$12,997	46.2

Source: U.S. Census Bureau American Community Survey; Calculations generated by StatsAmerica
Distress Criteria Statistical Report

Reference Date: All data are from the 2008-2012 Census ACS estimates

Region Consists of: 36071000400, 36071000501 Report Date: 3/16/2015 13:09

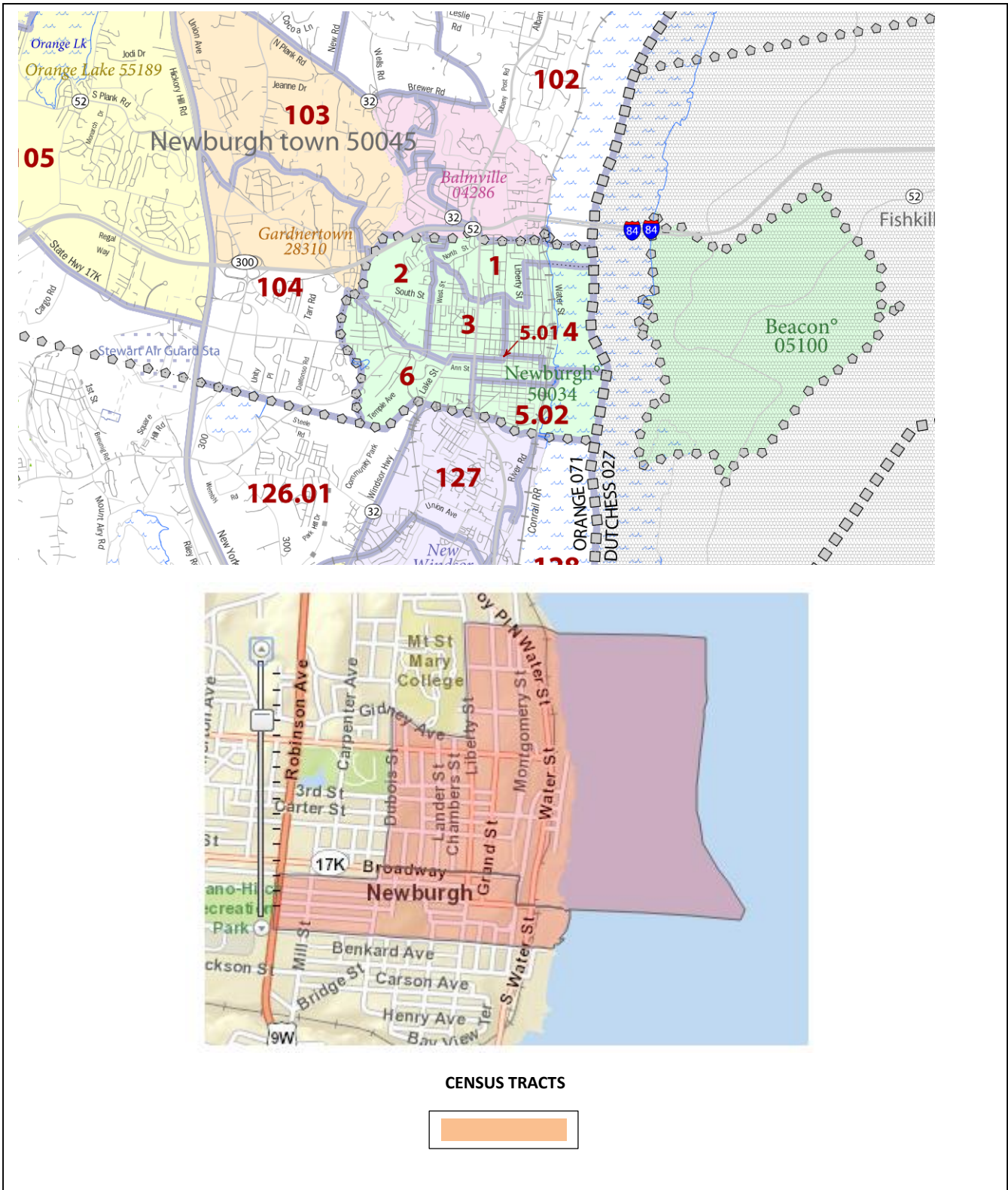


Figure 7: CITY OF NEWBURGH ECONOMICALLY DISTRESSED CENSUS TRACTS

City of Middletown

In Middletown the five tracts examined in 2013 have a combined unemployment rate 4.4 points higher than the U.S. average. One tract is close to 7 point higher. Per capita money income is about three-quarters that of the U.S., with specific tracts having a PCMI of less than 64 percent of the national figure.

Table 11: DISTRESS CRITERIA STATISTICAL REPORT-CITY of MIDDLETOWN, ORANGE COUNTY

Economic Distress Criteria—Primary Elements				
	Middletown	U.S.	Threshold Calculations	
2013 Unemployment Rate (5-Year ACS)	14.1	9.7	4.4	
2013 Per Capita Money Income (5-Year ACS)	\$21,215	\$28,155	75.35%	
Economic Distress Criteria—Geographic Components				
Census Tracts	Unemp. Rate 2013 ACS	Threshold Calculation	PCMI 2013 ACS	Threshold Calculation
Tract 0011.00 Orange, NY	15.8	6.1	\$20,276	72
Tract 0012.00 Orange, NY	11.8	2.1	\$17,872	63.5
Tract 0015.00 Orange, NY	16.6	6.9	\$20,879	74.2
Tract 0113.00 Orange, NY	11.7	2	\$26,336	93.5
Tract 0151.00 Orange, NY	15	5.3	\$17,000	60.4

Source: U.S. Census Bureau American Community Survey; Calculations generated by StatsAmerica.
Distress Criteria Statistical Report

Reference Date: All data are from the 2008-2012 Census ACS estimates

Region Consists of: 36071001500, 36071015100, 36071001200, 36071011300, 36071001100

Report Date: 3/16/2015 13:33



Middletown, NY

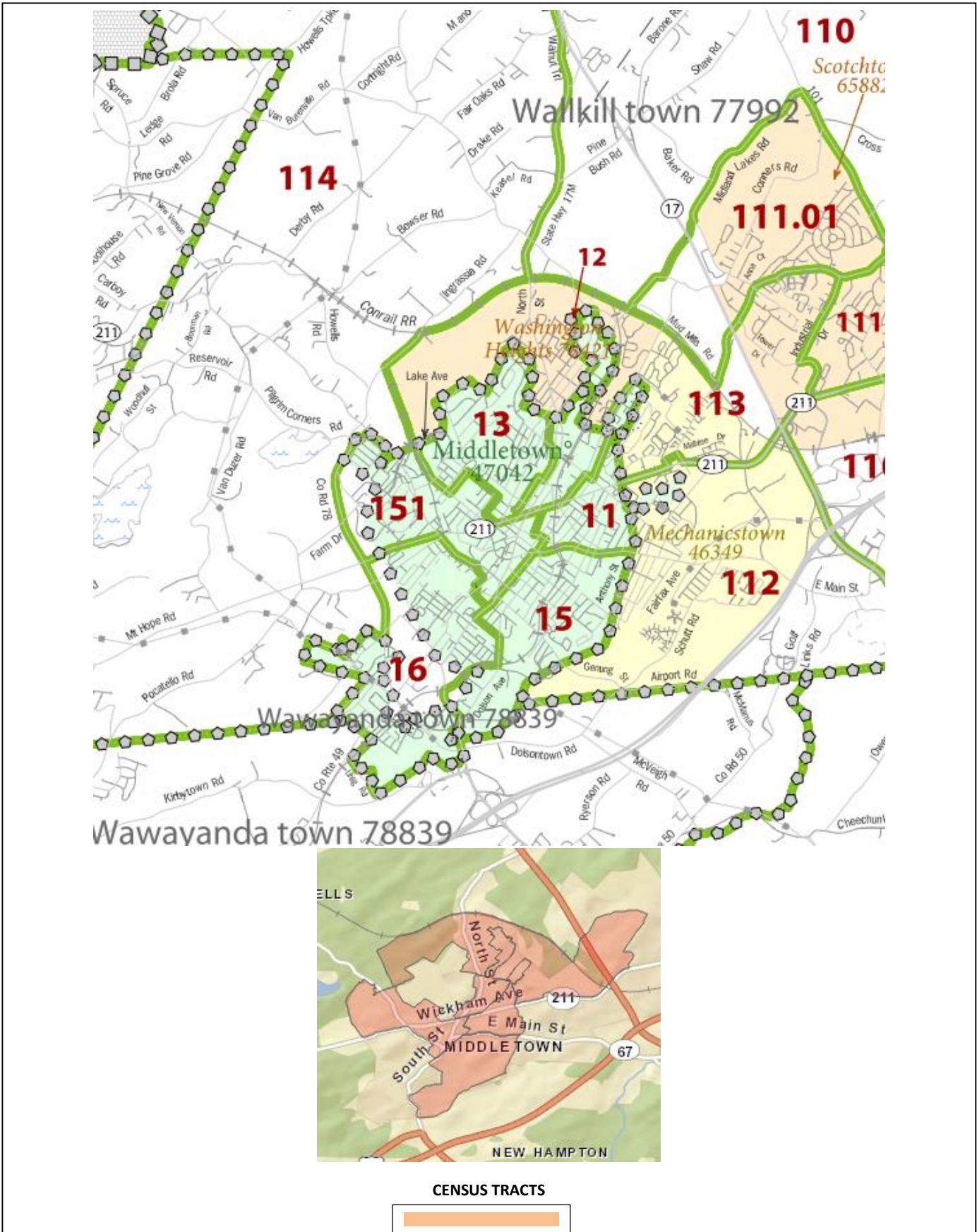


Figure 8: CITY OF MIDDLETOWN ECONOMICALLY DISTRESSED CENSUS TRACTS

City of Port Jervis

The City of Port Jervis exhibits economic distress. For the three tracts examined the unemployment rate is more than 2.5 percentage points about the national rate and PCMI is less than 80 percent. One particular tract in the City has an unemployment rate over 5 percentage points and a PCMI less than 64 per cent.

Table 12: DISTRESS CRITERIA STATISTICAL REPORT-CITY of PORT JERVIS, ORANGE COUNTY

Economic Distress Criteria—Primary Elements				
	Port Jervis	U.S.	Threshold Calculations	
2013 Unemployment Rate (5-Year ACS)	12.3	9.7	2.6	
2013 Per Capita Money Income (5-Year ACS)	\$21,765	\$28,155	77.30%	
Economic Distress Criteria—Geographic Components				
Census Tracts	Unemp. Rate 2013 ACS	Threshold Calculation	PCMI 2013 ACS	Threshold Calculation
Tract 0021.00 Orange, NY	11.9	2.2	\$21,944	77.9
Tract 0022.00 Orange, NY	14.9	5.2	\$17,943	63.7
Tract 0116.02 Orange, NY	10.6	0.9	\$25,162	89.4

Sources: U.S. Bureaus of Census, Labor Statistics, and Economic Analysis; Calculations generated by StatsAmerica.

Distress Criteria Statistical Report

Reference Date: All data is from Census ACS Estimates

Region Consists of: 36071002200, 36071002100, 36071011602

Report Date: 4/7/2015 12:08

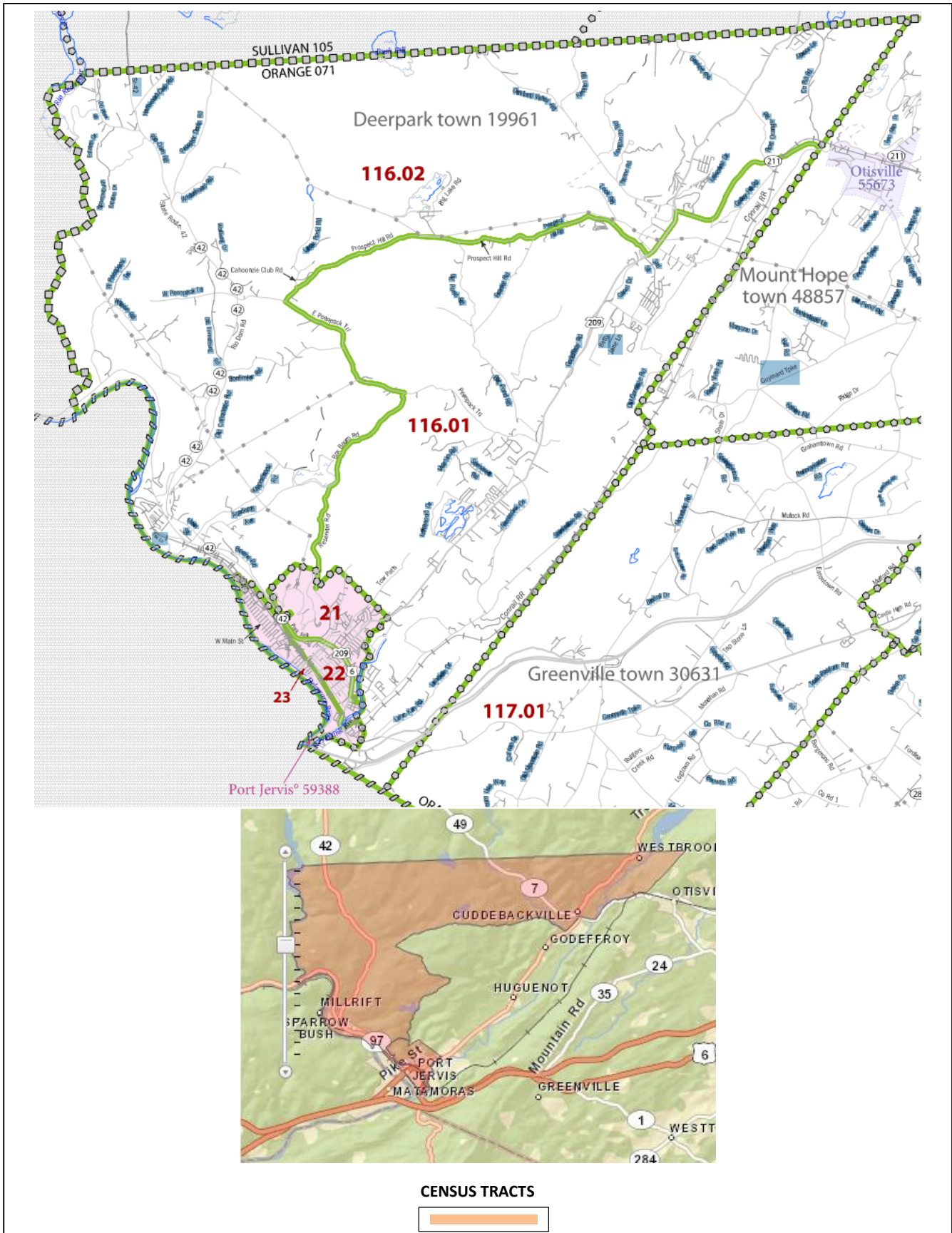


Figure 9: CITY OF PORT JERVIS ECONOMICALLY DISTRESSED CENSUS TRACTS

D. PUTNAM COUNTY

Putnam County does not exhibit any combined economic distress. Its unemployment is lower than average, and the county boasts higher than average personal income. Putnam County is the only county in the Hudson Valley region that does not have any tract with lower than average income. Putnam County does however have a few pockets showing some income distress in Carmel, Brewster and the southeastern part of Patterson.

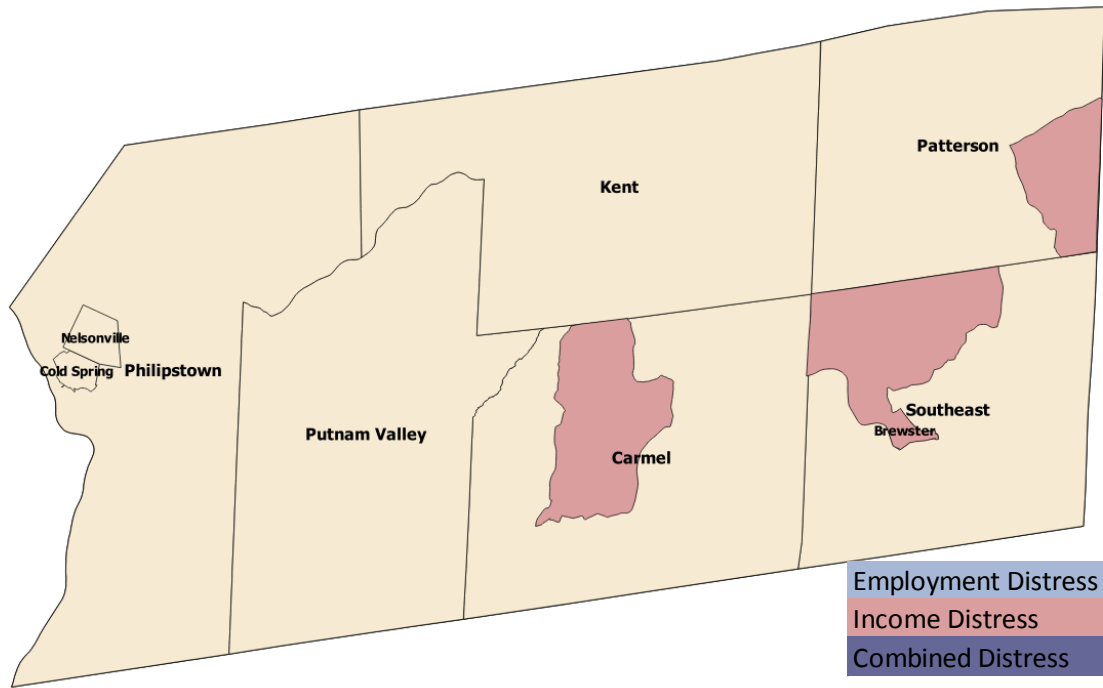


Figure 10: PUTNAM COUNTY ECONOMIC DISTRESS

Table 13: DISTRESS CRITERIA STATISTICAL REPORT-PUTNAM COUNTY

Distress Criteria Statistical Report			
Economic Distress Criteria—Primary Elements			
	Putnam County	U.S.	Threshold Calculations
24-month Average Unemployment Rate (BLS) period ending December 2014	5.31	6.77	-1.46
2013 Per Capita Money Income (3-year ACS)	\$41,101	\$27,884	147.40%
2013 Per Capita Money Income (5-year ACS)	\$40,309	\$28,155	143.17%
2013 Per Capita Personal Income (BEA)	\$58,955	\$44,765	131.70%
2000 Per Capita Money Income (Decennial Census)	\$30,127	\$21,587	139.56%

Source: U.S. Census Bureau American Community Survey; Calculations generated by StatsAmerica.

Reference Date: 12 / 2014 (All data elements refer to this date or earlier.)

Region Consists of: Putnam Co. NY

Report Date: 3/9/2015 15:23

E. ROCKLAND COUNTY

Rockland County also does not exhibit any economic distress. Its unemployment as a county is below average, and personal income is above average, as shown in Table 12. Unemployment rates are more than a point under the U.S average and PCMI averages are greater than 20 percent above the national numbers. Despite this, pockets of distress remain, particularly around the urban centers in the Spring Valley area and Haverstraw where both income and employment distress are evident.

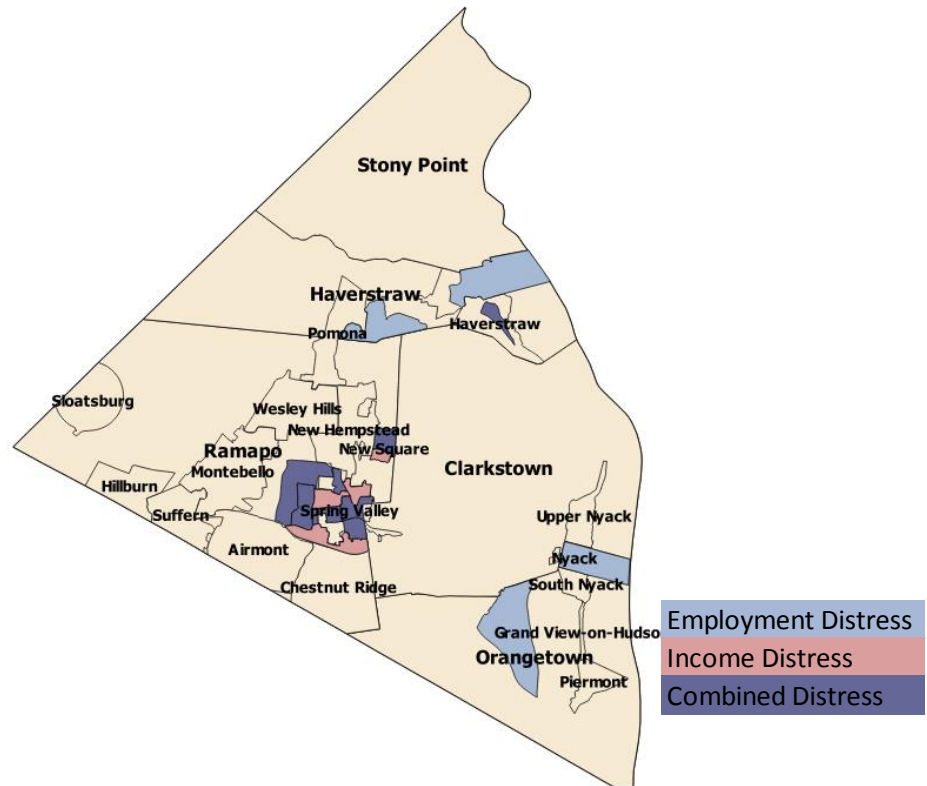


Figure 11: ROCKLAND COUNTY ECONOMIC DISTRESS

Table 14: DISTRESS CRITERIA STATISTICAL REPORT-ROCKLAND COUNTY

Distress Criteria Statistical Report			
Economic Distress Criteria—Primary Elements			
	Rockland County	U.S.	Threshold Calculations
24-month Average Unemployment Rate (BLS) period ending December 2014	5.47	6.77	-1.3
2013 Per Capita Money Income (3-year ACS)	\$33,755	\$27,884	121.06%
2013 Per Capita Money Income (5-year ACS)	\$34,591	\$28,155	122.86%
2013 Per Capita Personal Income (BEA)	\$56,657	\$44,765	126.57%
2000 Per Capita Money Income (Decennial Census)	\$28,082	\$21,587	130.09%

Source: U.S. Census Bureau American Community Survey; Calculations generated by StatsAmerica.
 Reference Date: 12 / 2014 (All data elements refer to this date or earlier.)
 Region Consists of: Rockland Co. NY
 Report Date: 3/9/2015 15:24

Table 15: DISTRESS CRITERIA STATISTICAL REPORT-ROCKLAND COUNTY ALL DISTRESSED CENSUS TRACTS

Economic Distress Criteria—Primary Elements				
	Region	U.S.	Threshold Calculations	
2013 Unemployment Rate (5-Year ACS)	13.5	9.7	3.8	
2013 Per Capita Money Income (5-Year ACS)	\$17,284	\$28,155	61.39%	
Economic Distress Criteria—Geographic Components				
Census Tracts	Unemp. Rate 2013 ACS	Threshold Calculation	PCMI 2013 ACS	Threshold Calculation
Tract 0106.02 Rockland, NY	14.6	4.9	\$24,792	88.1
Tract 0107.01 Rockland, NY	11.2	1.5	\$26,742	95
Tract 0113.01 Rockland, NY	15.3	5.6	\$23,655	84
Tract 0115.06 Rockland, NY	11.3	1.6	\$6,662	23.7
Tract 0121.01 Rockland, NY	10.9	1.2	\$17,973	63.8
Tract 0121.03 Rockland, NY	11.4	1.7	\$11,609	41.2
Tract 0121.05 Rockland, NY	11.6	1.9	\$9,130	32.4
Tract 0122.02 Rockland, NY	12.2	2.5	\$18,462	65.6
Tract 0122.04 Rockland, NY	12.9	3.2	\$11,211	39.8
Tract 0123.00 Rockland, NY	17.7	8	\$11,434	40.6
Tract 0124.01 Rockland, NY	12.5	2.8	\$23,517	83.5
Tract 0124.02 Rockland, NY	13.7	4	\$16,243	57.7

Source: U.S. Census Bureau American Community Survey; Calculations generated by StatsAmerica
 Distress Criteria Statistical Report

Reference Date: All data are from the 2008-2012 Census ACS estimates

Region Consists of: 36087010602, 36087010701, 36087012101, 36087012103, 36087012105, 36087012202, 36087012204, 36087012300, 36087012401, 36087012402, 36087011301, 36087011506

Report Date: 3/16/2015 14:42

Spring Valley Area

Table 16: DISTRESS CRITERIA STATISTICAL REPORT- SPRING VALLEY AREA, ROCKLAND COUNTY

Economic Distress Criteria—Primary Elements				
	Spring Valley	U.S.	Threshold Calculations	
2013 Unemployment Rate (5-Year ACS)	13.6	9.7	3.9	
2013 Per Capita Money Income (5-Year ACS)	\$15,567	\$28,155	55.29%	
Economic Distress Criteria—Geographic Components				
Census Tracts	Unemp. Rate 2013 ACS	Threshold Calculation	PCMI 2013 ACS	Threshold Calculation
Tract 0113.01 Rockland, NY	15.3	5.6	\$23,655	84
Tract 0115.06 Rockland, NY	11.3	1.6	\$6,662	23.7
Tract 0121.01 Rockland, NY	10.9	1.2	\$17,973	63.8
Tract 0121.03 Rockland, NY	11.4	1.7	\$11,609	41.2
Tract 0121.05 Rockland, NY	11.6	1.9	\$9,130	32.4
Tract 0122.02 Rockland, NY	12.2	2.5	\$18,462	65.6
Tract 0122.04 Rockland, NY	12.9	3.2	\$11,211	39.8
Tract 0123.00 Rockland, NY	17.7	8	\$11,434	40.6
Tract 0124.01 Rockland, NY	12.5	2.8	\$23,517	83.5

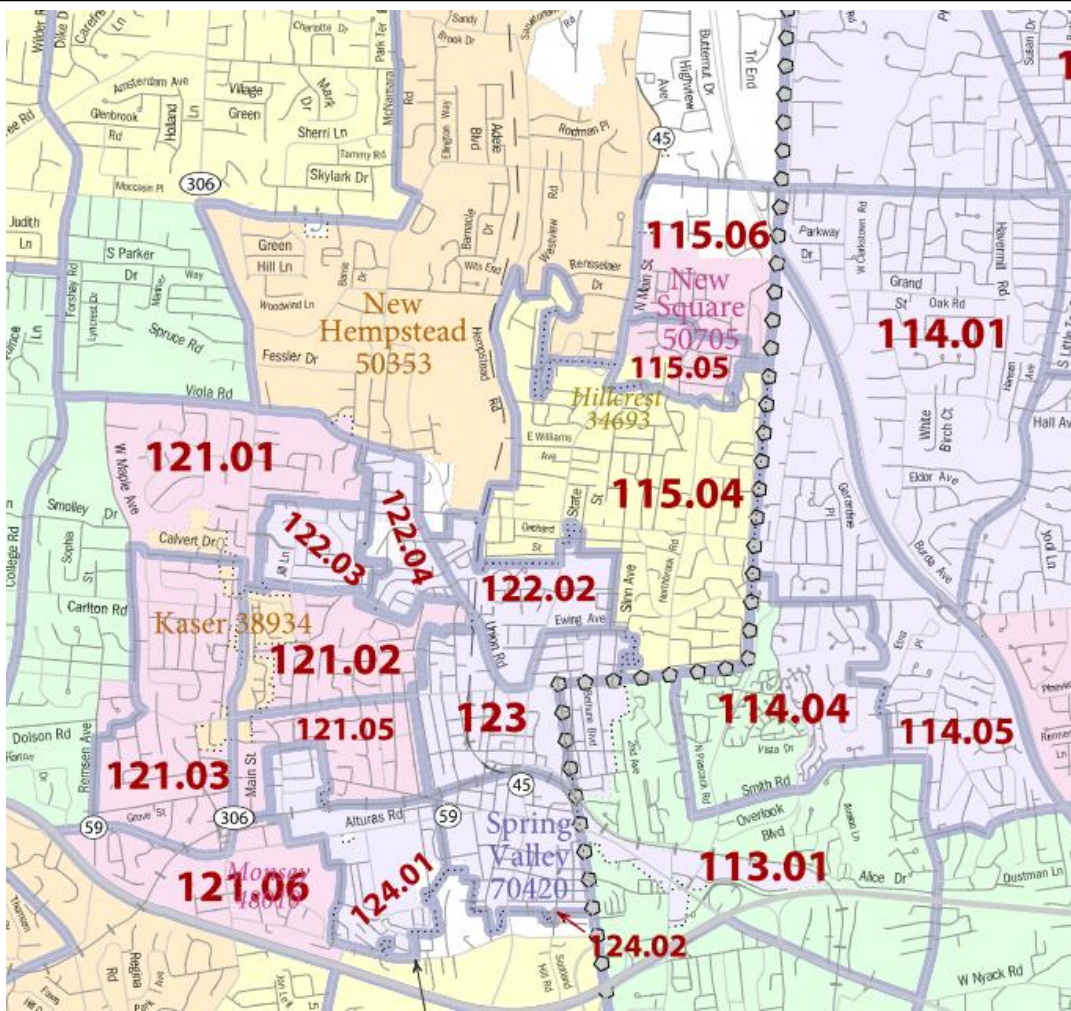
Source: U.S. Census Bureau American Community Survey; Calculations generated by StatsAmerica.

Distress Criteria Statistical Report

Reference Date: All data are from the 2008-2012 Census ACS estimates

Region Consists of: 36087012101, 36087012103, 36087012105, 36087012202, 36087012204, 36087012300, 36087011301, 36087011506, 36087012401

Report Date: 3/16/2015 15:14



CENSUS TRACTS

Figure 12: SPRING VALLEY ECONOMICALLY DISTRESSED CENSUS TRACTS

Village of Haverstraw

In the Village of Haverstraw two census tracts show combined distress in 2013. The unemployment rate was 3.4 points greater than the U.S. average, and PCMI at about 90 percent. One particular tract in Haverstraw is more significantly distressed, showing unemployment 5 points greater and a PCMI at 88 percent of the national numbers.

Table 17: DISTRESS CRITERIA STATISTICAL REPORT-ROCKLAND COUNTY HAVERSTRAW, ROCKLAND COUNTY

Economic Distress Criteria—Primary Elements				
	Haverstraw	U.S.	Threshold Calculations	
2013 Unemployment Rate (5-Year ACS)	13.2	9.7	3.5	
2013 Per Capita Money Income (5-Year ACS)	\$25,578	\$28,155	90.85%	
Economic Distress Criteria—Geographic Components				
Census Tracts	Unemp. Rate 2013 ACS	Threshold Calculation	PCMI 2013 ACS	Threshold Calculation
Tract 0106.02 Rockland, NY	14.6	4.9	\$24,792	88.1
Tract 0107.01 Rockland, NY	11.2	1.5	\$26,742	95

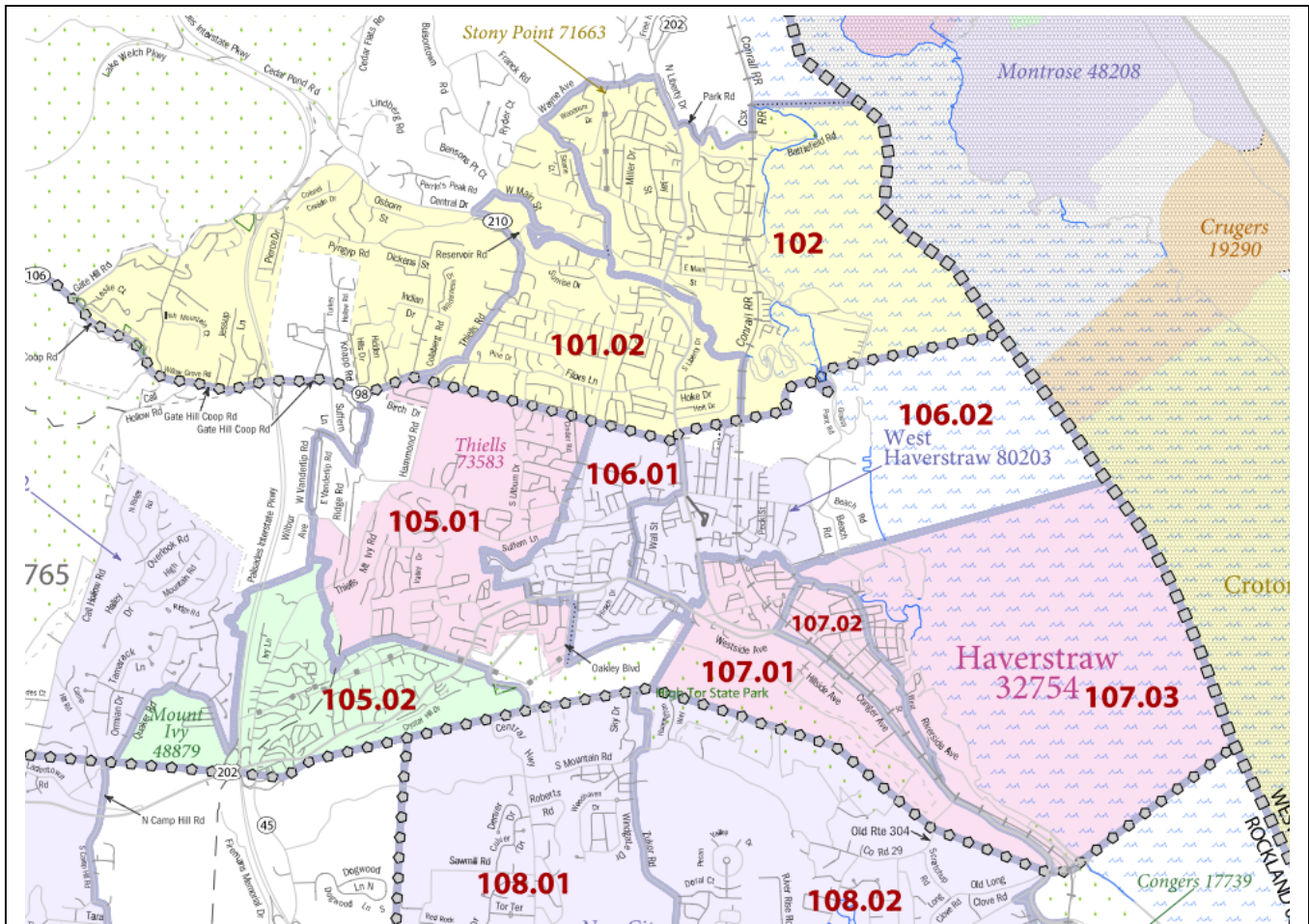
Source: U.S. Census Bureau American Community Survey; Calculations generated by StatsAmerica

Distress Criteria Statistical Report

Reference Date: All data are from the 2008-2012 Census ACS estimates

Region Consists of: 36087010701, 36087010602

Report Date: 3/16/2015 15:36



CENSUS TRACTS



Figure 13: VILLAGE OF HAVERSTRAW ECONOMICALLY DISTRESSED CENSUS TRACTS

F: SULLIVAN COUNTY

Sullivan County is economically distressed, exhibiting higher than average unemployment and lower than average income. In 2013 Sullivan County had an unemployment rate more than 1 percent greater than the U.S. and PCMI below 90 percent. The most distressed tracts are concentrated in the center of the county, in the villages of Liberty and Monticello.

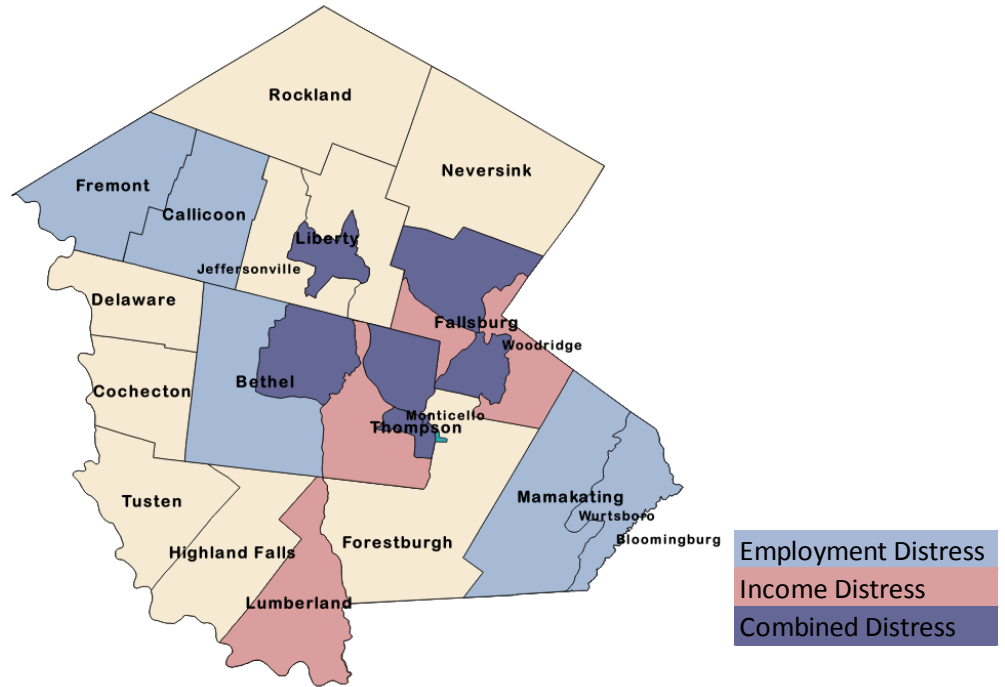


Figure 14: SULLIVAN COUNTY ECONOMIC DISTRESS

Table 18: DISTRESS CRITERIA STATISTICAL REPORT-SULLIVAN COUNTY

Distress Criteria Statistical Report			
Economic Distress Criteria—Primary Elements			
	Sullivan County	U.S.	Threshold Calculations
24-month Average Unemployment Rate (BLS) period ending December 2014	7.9	6.77	1.13
2013 Per Capita Money Income (3-year ACS)	\$24,747	\$27,884	88.75%
2013 Per Capita Money Income (5-year ACS)	\$24,963	\$28,155	88.66%
2013 Per Capita Personal Income (BEA)	\$41,197	\$44,765	92.03%
2000 Per Capita Money Income (Decennial Census)	\$18,892	\$21,587	87.52%

Source: U.S. Census Bureau American Community Survey; Calculations generated by StatsAmerica.
 Reference Date: 12 / 2014 (All data elements refer to this date or earlier.)
 Region Consists of: Sullivan Co. NY
 Report Date: 3/9/2015 15:26

Table 19: DISTRESS CRITERIA STATISTICAL REPORT-by CENSUS TRACT SULLIVAN COUNTY

Economic Distress Criteria—Primary Elements				
	Sullivan County	U.S.	Threshold Calculations	
2013 Unemployment Rate (5-Year ACS)	15.9	9.7	6.2	
2013 Per Capita Money Income (5-Year ACS)	\$21,565	\$28,155	76.59%	
Economic Distress Criteria—Geographic Components				
Census Tracts	Unemp. Rate 2013 ACS	Threshold Calculation	PCMI 2013 ACS	Threshold Calculation
Tract 9504.00 Sullivan, NY	14.6	4.9	\$26,165	92.9
Tract 9505.00 Sullivan, NY	18.1	8.4	\$26,147	92.9
Tract 9507.00 Sullivan, NY	13.6	3.9	\$22,329	79.3
Tract 9508.00 Sullivan, NY	15.2	5.5	\$18,908	67.2
Tract 9509.00 Sullivan, NY	12.1	2.4	\$17,345	61.6
Tract 9510.00 Sullivan, NY	17.8	8.1	\$26,684	94.8
Tract 9513.00 Sullivan, NY	11.8	2.1	\$27,489	97.6
Tract 9515.00 Sullivan, NY	15.3	5.6	\$18,352	65.2
Tract 9518.00 Sullivan, NY	20.1	10.4	\$15,136	53.8
Tract 9519.00 Sullivan, NY	27.4	17.7	\$21,268	75.5
Tract 9525.00 Sullivan, NY	12.6	2.9	\$25,495	90.6

Source: U.S. Census Bureau American Community Survey; Calculations generated by StatsAmerica
 Distress Criteria Statistical Report
 Reference Date: All data are from the 2008-2012 Census ACS estimates
 Region Consists of: 36105950800, 36105951300, 36105951500, 36105951000, 36105952500, 36105950500, 36105950700, 36105951900, 36105951800, 36105950900, 36105950400

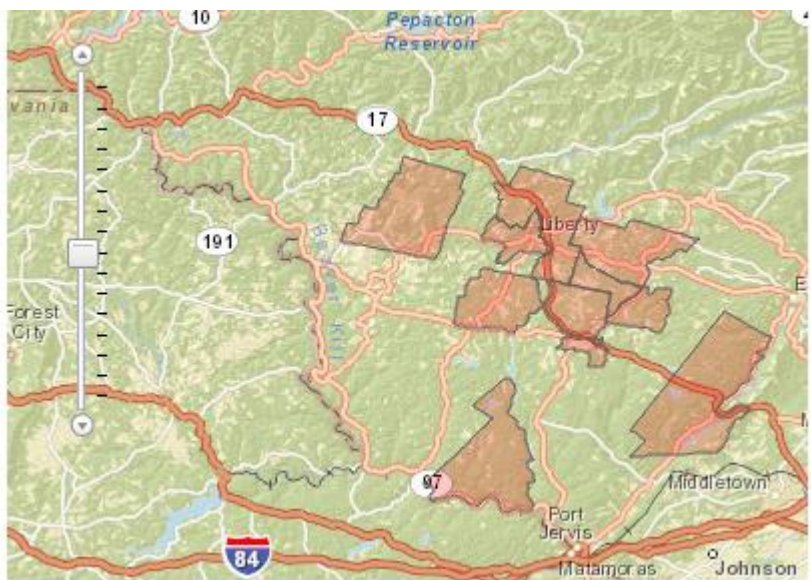


Figure 15: ECONOMICALLY DISTRESSED CENSUS TRACTS-SULLIVAN COUNTY

Village and Town of Liberty

The Town of Liberty exhibits both employment and income distress. In 2013, unemployment was more than 5.5 points above the national unemployment rate. In a specific census tract, unemployment was well over 8 points higher. PCMI is at approximately 85 percent of the national average, but was below 80 percent in one tract.

Table 20: DISTRESS CRITERIA STATISTICAL REPORT-LIBERTY, SULLIVAN COUNTY

Economic Distress Criteria—Primary Elements				
	Liberty	U.S.	Threshold Calculations	
2013 Unemployment Rate (5-Year ACS)	15.3	9.7	5.6	
2013 Per Capita Money Income (5-Year ACS)	\$23,856	\$28,155	84.73%	
Economic Distress Criteria—Geographic Components				
Census Tracts	Unemp. Rate 2013 ACS	Threshold Calculation	PCMI 2013 ACS	Threshold Calculation
Tract 9505.00 Sullivan, NY	18.1	8.4	\$26,147	92.9
Tract 9507.00 Sullivan, NY	13.6	3.9	\$22,329	79.3

Source: U.S. Census Bureau American Community Survey; Calculations generated by StatsAmerica.
 Distress Criteria Statistical Report -Liberty
 Reference Date: All data are from the 2008-2012 Census ACS estimates
 Region Consists of: 36105950500, 36105950700
 Report Date: 3/13/2015 12:44

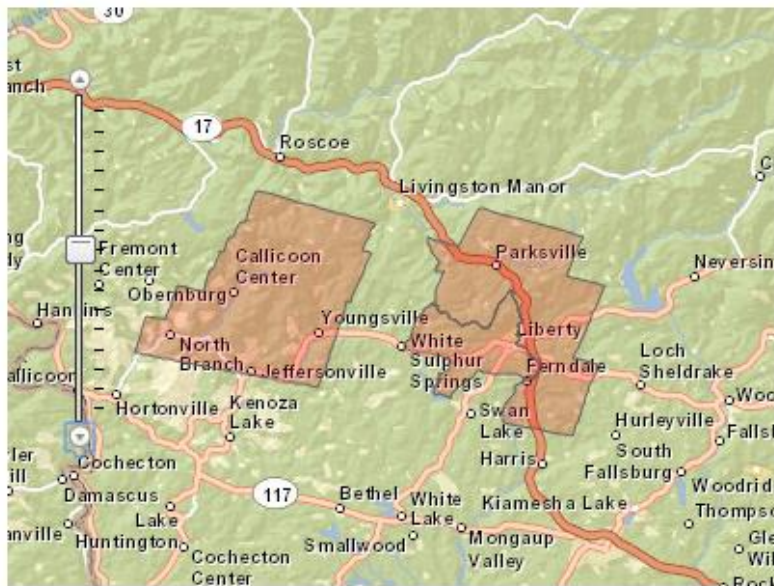
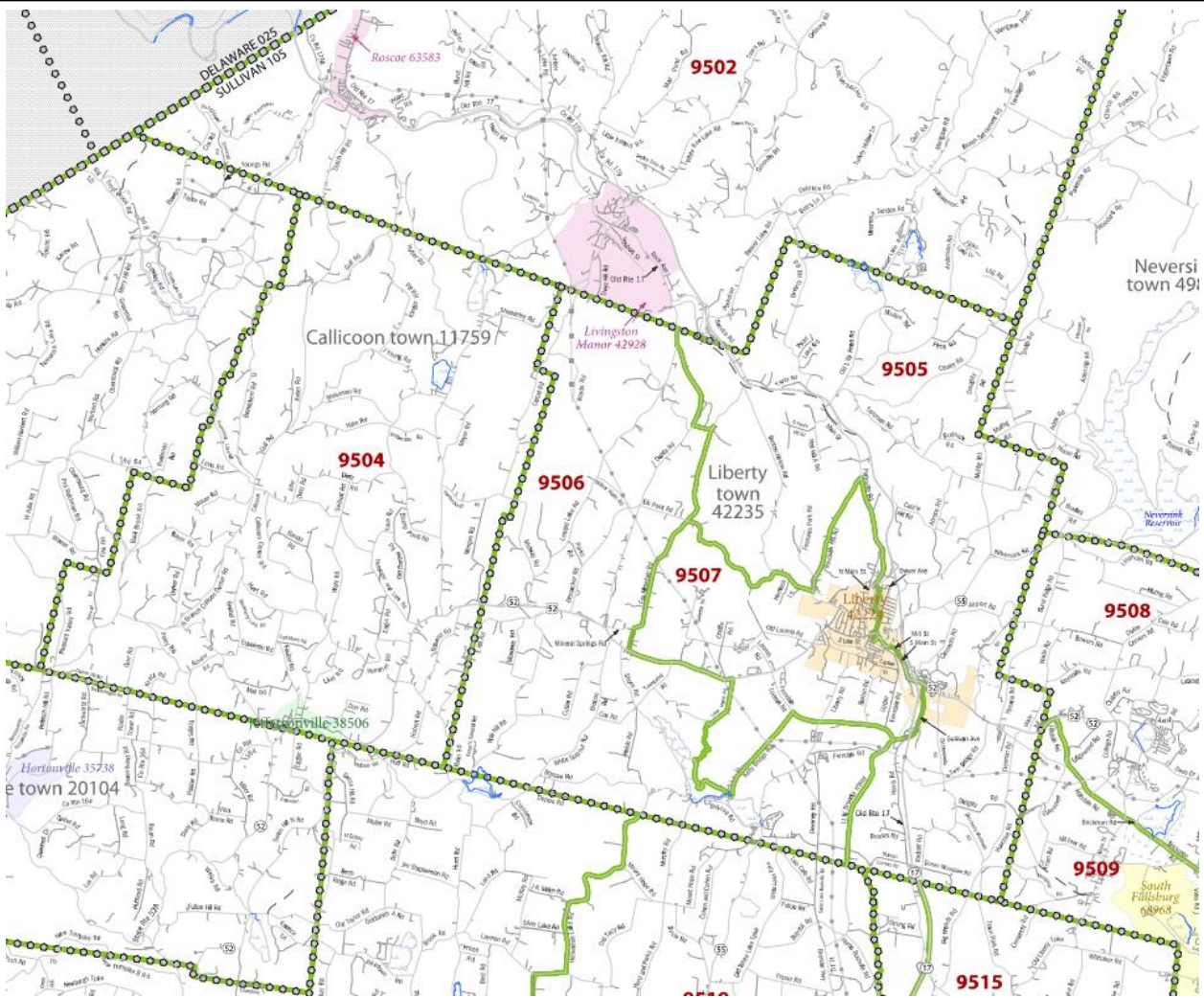


Figure 16: TOWN OF LIBERTY ECONOMICALLY DISTRESSED CENSUS TRACTS

Village of Monticello

In the Village of Monticello, the two census tracts showed significant unemployment at 9.7 points greater than the U.S. average. PCMI was less than 57%. One particular census tract in Monticello shows unemployment more than 10 points greater than the national average and PCMI at less than 54 percent.

Table 21: DISTRESS CRITERIA STATISTICAL REPORT-MONTICELLO, SULLIVAN COUNTY

Economic Distress Criteria—Primary Elements				
	Monticello	U.S.	Threshold Calculations	
2013 Unemployment Rate (5-Year ACS)	18.9	9.7	9.2	
2013 Per Capita Money Income (5-Year ACS)	\$15,999	\$28,155	56.82%	
Economic Distress Criteria—Geographic Components				
Census Tracts	Unemp. Rate 2013 ACS	Threshold Calculation	PCMI 2013 ACS	Threshold Calculation
Tract 9515.00 Sullivan, NY	15.3	5.6	\$18,352	65.2
Tract 9518.00 Sullivan, NY	20.1	10.4	\$15,136	53.8

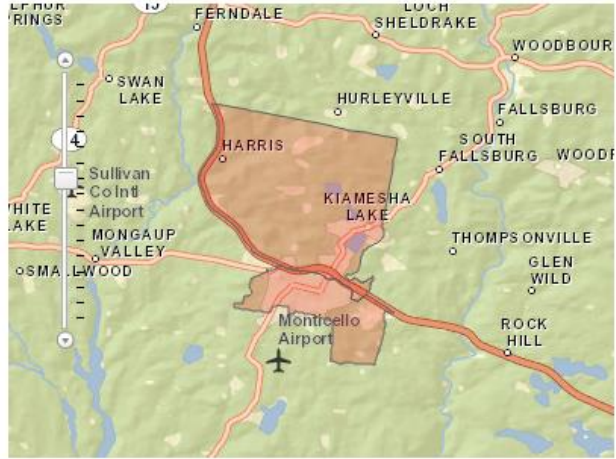
Source: U.S. Census Bureau American Community Survey; Calculations generated by StatsAmerica

Distress Criteria Statistical Report

Reference Date: All data are from the 2008-2012 Census ACS estimates

Region Consists of: 36105951800, 36105951500, 36105951700

Report Date: 3/13/2015 13:26



CENSUS TRACTS

Figure 17: MONTICELLO ECONOMICALLY DISTRESSED CENSUS TRACTS

G: ULSTER COUNTY

Ulster County shows slightly above average unemployment figures, and near average personal income. The data paints a mixed picture, with the Bureau of Economic Analysis calculating income at slightly below average, but the Census Bureau calculating income at somewhat above the national average. Tracts that show both distress indicators are concentrated around the urban center of Kingston, as well as the more rural areas of Ellenville and Plattekill-Modena.

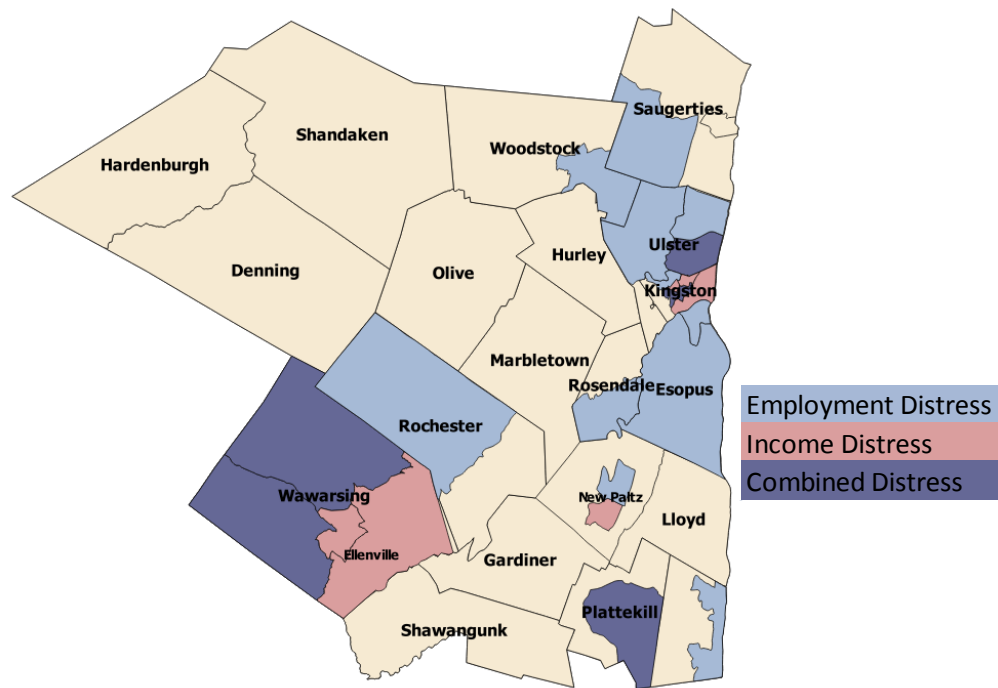


Figure 18: ULSTER COUNTY ECONOMIC DISTRESS

Table 22: DISTRESS CRITERIA STATISTICAL REPORT-ULSTER COUNTY

Economic Distress Criteria—Primary Elements			
	Ulster County	U.S.	Threshold Calculation
24-month Average Unemployment Rate (BLS) period ending December 2014	7.02	6.77	0.25
2013 Per Capita Money Income (3-year ACS)	\$30,163	\$27,884	108.17%
2013 Per Capita Money Income (5-year ACS)	\$30,442	\$28,155	108.12%
2013 Per Capita Personal Income (BEA)	\$44,527	\$44,765	99.47%
2000 Per Capita Money Income (Decennial Census)	\$20,846	\$21,587	96.57%

Reference Date: 12 / 2014 (All data elements refer to this date or earlier.)

Region Consists of: Ulster Co. NY

Report Date: 3/9/2015 15:27

City of Kingston

The City of Kingston exhibits both employment and income distress in four census tracts, as exhibited in Table 20. For the four census tracts combined the unemployment rate is 3 points greater than the national average. For specific tracts, unemployment is 4 or more points higher than the national rate.

Per capita income across the four tracts is less than three-quarters of the national average. Two census tracts in the city exhibit even lower income.

Table 23: DISTRESS CRITERIA STATISTICAL REPORT-CITY of KINGSTON, ULSTER COUNTY

Economic Distress Criteria—Primary Elements				
	City of Kingston	U.S.	Threshold Calculations	
2013 Unemployment Rate (5-Year ACS)	12.7	9.7	3	
2013 Per Capita Money Income (5-Year ACS)	\$20,373	\$28,155	72.36%	
Economic Distress Criteria—Geographic Components				
Census Tracts	Unemp. Rate 2013 ACS	Threshold Calculation	PCMI 2013 ACS	Threshold Calculation
Tract 9514.00 Ulster, NY	14	4.3	\$21,966	78
Tract 9517.00 Ulster, NY	10.5	0.8	\$20,007	71.1
Tract 9519.00 Ulster, NY	13.1	3.4	\$25,582	90.9
Tract 9521.00 Ulster, NY	13.7	4	\$16,361	58.1

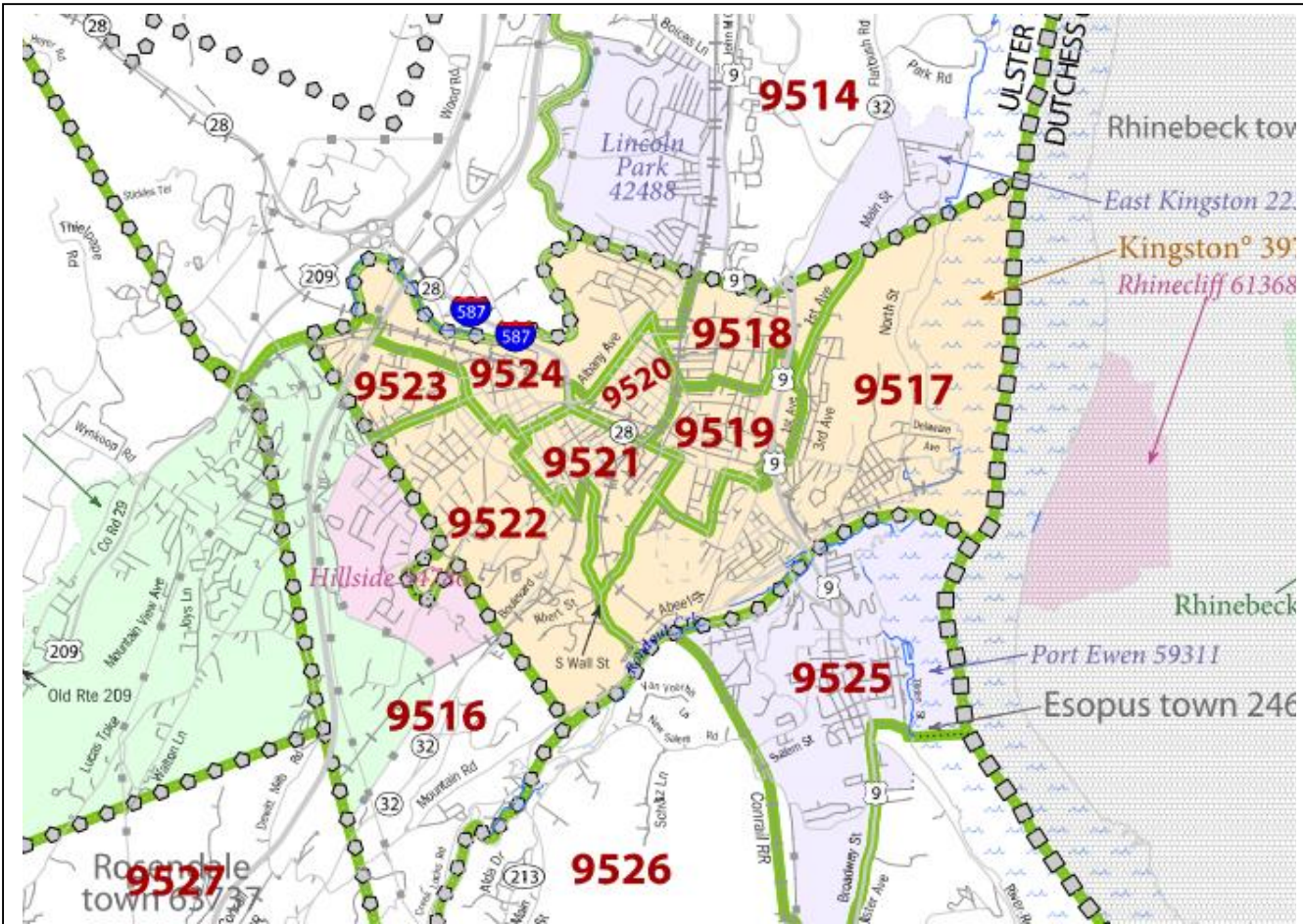
Source: U.S. Census Bureau American Community Survey; Calculations generated by StatsAmerica.

Distress Criteria Statistical Report-Kingston

Reference Date: All data are from the 2008-2012 Census ACS estimates

Region Consists of: 36111951900, 36111951700, 36111951400, 36111952100

Report Date: 3/13/2015 14:42



CENSUS TRACTS



Figure 19: CITY OF KINGSTON ECONOMICALLY DISTRESSED CENSUS TRACTS

Village of Ellenville

Ellenville in Ulster County also exhibits economic distress. Three combined census tracts in the Ellenville area show 2013 unemployment rates that were 3.6 times greater than the U.S. average and 2013 PCMI is less than 80 percent of the U.S. average.

Individual tracts in the Ellenville area have unemployment rates as high as 7.1 points over the national average and income at three quarters of the national PCMI.

Table 24: DISTRESS CRITERIA STATISTICAL REPORT-ELLENVILLE, ULSTER COUNTY

Economic Distress Criteria—Primary Elements				
	Ellenville	U.S.	Threshold Calculations	
2013 Unemployment Rate (5-Year ACS)	13.3	9.7	3.6	
2013 Per Capita Money Income (5-Year ACS)	\$22,042	\$28,155	78.29%	
Economic Distress Criteria—Geographic Components				
Census Tracts	Unemp. Rate 2013 ACS	Threshold Calculation	PCMI 2013 ACS	Threshold Calculation
Tract 9546.00 Ulster, NY	16.8	7.1	\$24,573	87.3
Tract 9547.00 Ulster, NY	14.1	4.4	\$21,284	75.6
Tract 9548.00 Ulster, NY	11.7	2	\$21,361	75.9

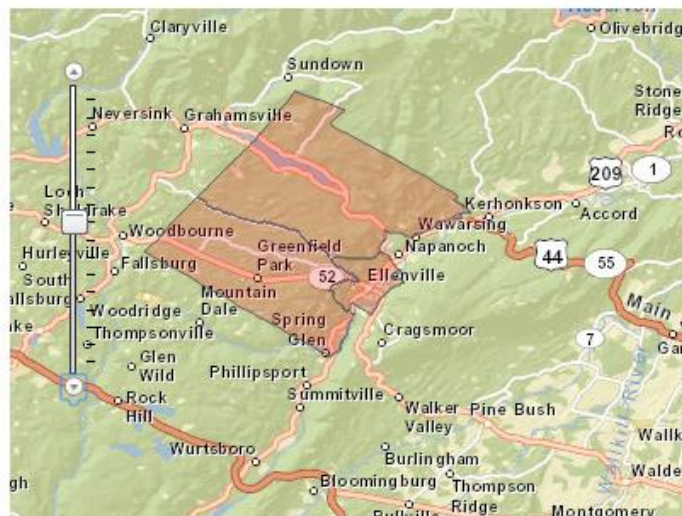
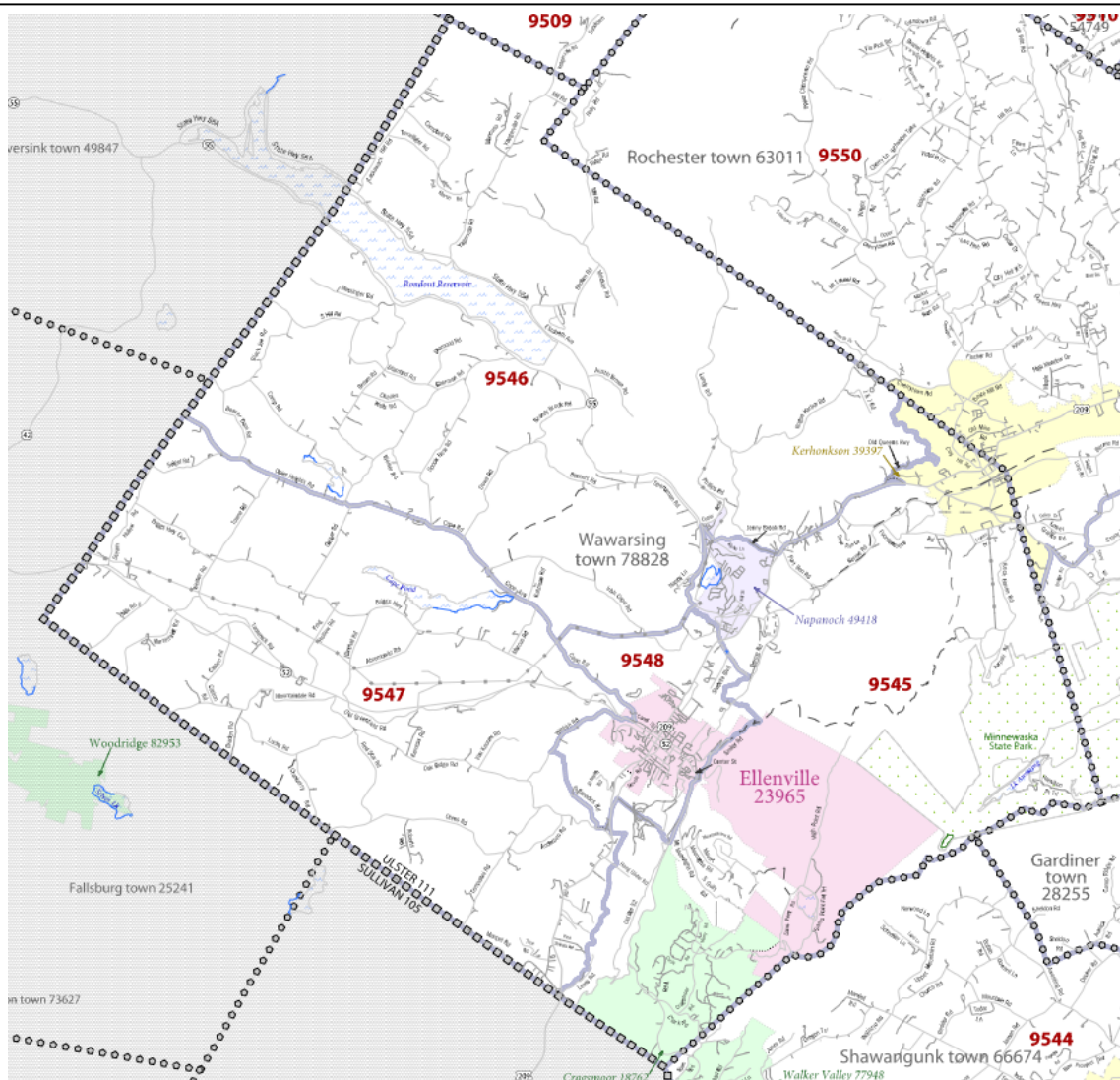
Sources: U.S. Bureaus of Census, Labor Statistics, and Economic Analysis; Calculations generated by StatsAmerica.

Distress Criteria Statistical Report

Reference Date: All data is from Census ACS Estimates

Region Consists of: 36111954600, 36111954800, 36111954700

Report Date: 3/31/2015 11:35



CENSUS TRACTS

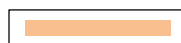


Figure 20: ELLENVILLE AREA ECONOMICALLY DISTRESSED CENSUS TRACTS



Village of Ellenville, NY

Town of Plattekill

Plattekill in Ulster County also shows significant economic distress. In 2013, unemployment was 4.5 points above the national average and PCMI was 85 percent.

Table 25: DISTRESS CRITERIA STATISTICAL REPORT-PLATTEKILL, ULSTER COUNTY

Economic Distress Criteria—Primary Elements				
	Plattekill	U.S.	Threshold Calculations	
2013 Unemployment Rate (5-Year ACS)	14.2	9.7	4.5	
2013 Per Capita Money Income (5-Year ACS)	\$24,037	\$28,155	85.37%	
Economic Distress Criteria—Geographic Components				
Census Tract	Unemp. Rate 2013 ACS	Threshold Calculation	PCMI 2013 ACS	Threshold Calculation
Tract 9541.00 Ulster, NY	14.2	4.5	\$24,037	85.4

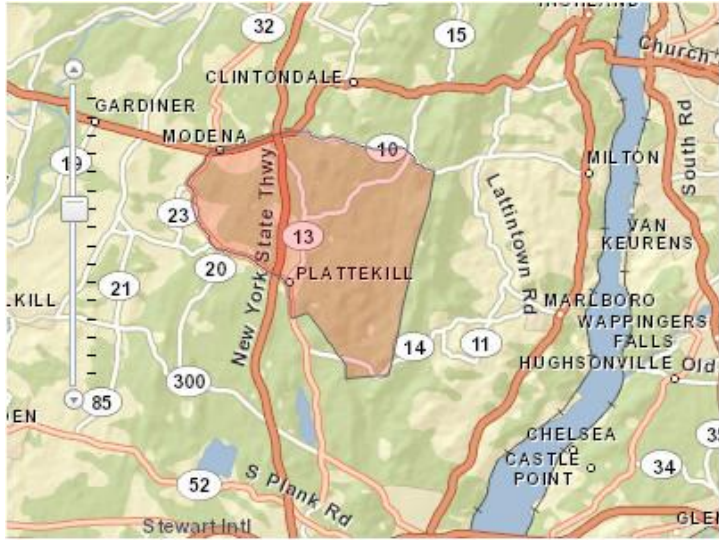
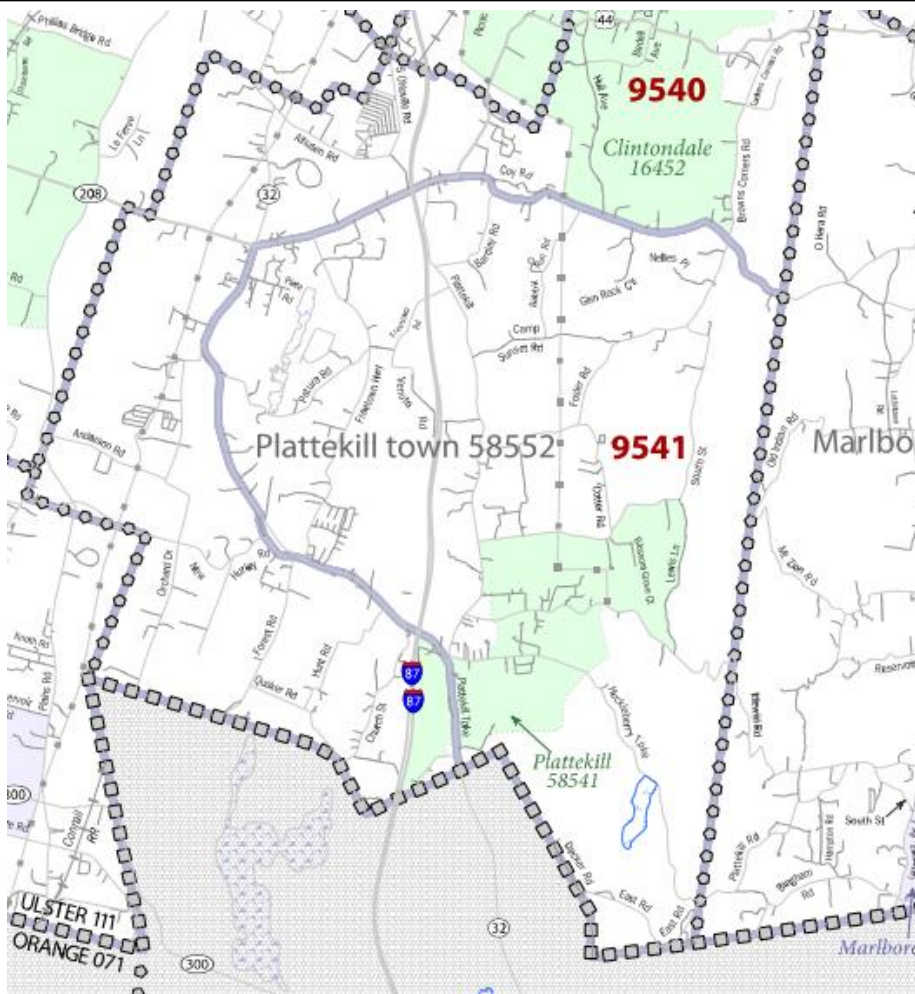
Sources: U.S. Bureau of Census, Labor Statistics, and Economic Analysis; Calculations generated by StatsAmerica.

Distress Criteria Statistical Report

Reference Date: All data is from Census ACS Estimates

Region Consists of: 36111954100

Report Date: 3/31/2015 14:04



CENSUS TRACTS



Figure 21: PLATTEKILL ECONOMICALLY DISTRESSED CENSUS TRACTS

H: WESTCHESTER COUNTY

Westchester County as a whole does not show signs of economic distress, with employment rates and per capita income being significantly above national averages. Pockets of economic distress are concentrated around Mount Vernon, Peekskill, Yonkers, and Ossining.

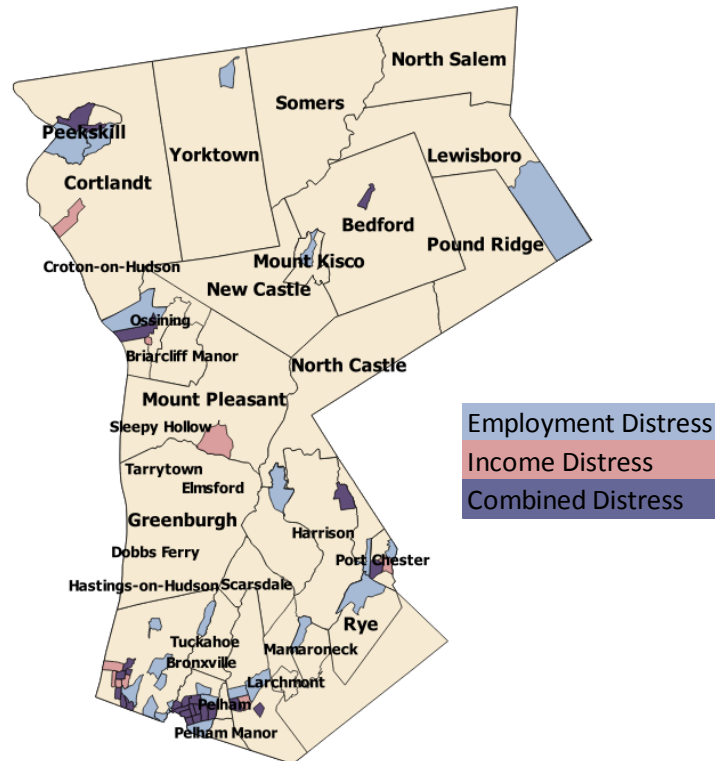


Figure 22: WESTCHESTER COUNTY ECONOMIC DISTRESS

Table 26 : DISTRESS CRITERIA STATISTICAL REPORT-WESTCHESTER COUNTY

Economic Distress Criteria—Primary Elements			
	Westchester County	U.S.	Threshold Calculations
24-month Average Unemployment Rate (BLS) period ending December 2014	5.77	6.77	-1
2013 Per Capita Money Income (3-year ACS)	\$47,237	\$27,884	169.41%
2013 Per Capita Money Income (5-year ACS)	\$47,984	\$28,155	170.43%
2013 Per Capita Personal Income (BEA)	\$80,363	\$44,765	179.52%
2000 Per Capita Money Income (Decennial Census)	\$36,726	\$21,587	170.13%

Sources: U.S. Bureau of Census, Labor Statistics, and Economic Analysis; Calculations generated by StatsAmerica.

Reference Date: 12 / 2014 (All data elements refer to this date or earlier.)

Region Consists of: Westchester Co. NY

Report Date: 3/9/2015 15:29

City of Mount Vernon

Mount Vernon exhibits fairly significant economic distress. The census tracts examined have an unemployment rate 9.7 points higher than the U.S. average and per capita income is well below 80 percent the U.S. average. Specific census tracts within Mount Vernon have unemployment that is well over 10 points and one close to almost 20 points greater than the U.S. average. Per capita income is as low as 55 percent that of the U.S. average.

Table 27: DISTRESS CRITERIA STATISTICAL REPORT-MOUNT VERNON, WESCHESTER COUNTY

	Mount Vernon	U.S.	Threshold Calculations	
2013 Unemployment Rate (5-Year ACS)	16.9	9.7	7.2	
2013 Per Capita Money Income (5-Year ACS)	\$21,484	\$28,155	76.31%	
Economic Distress Criteria—Geographic Components				
Census Tracts	Unemp. Rate 2013 ACS	Threshold Calculation	PCMI 2013 ACS	Threshold Calculation
Tract 0026.00 Westchester, NY	23.1	13.4	\$26,258	93.3
Tract 0027.00 Westchester, NY	21.4	11.7	\$18,233	64.8
Tract 0028.00 Westchester, NY	23.9	14.2	\$16,690	59.3
Tract 0029.00 Westchester, NY	29.5	19.8	\$17,234	61.2
Tract 0030.00 Westchester, NY	15.1	5.4	\$22,852	81.2
Tract 0031.00 Westchester, NY	21.7	12	\$15,587	55.4
Tract 0032.00 Westchester, NY	14.9	5.2	\$19,414	69
Tract 0033.00 Westchester, NY	15.9	6.2	\$20,789	73.8
Tract 0034.00 Westchester, NY	13.4	3.7	\$25,163	89.4
Tract 0035.00 Westchester, NY	14.6	4.9	\$22,782	80.9
Tract 0036.00 Westchester, NY	12.2	2.5	\$20,124	71.5
Tract 0037.00 Westchester, NY	10.4	0.7	\$23,346	82.9
Tract 0040.00 Westchester, NY	12.5	2.8	\$23,707	84.2

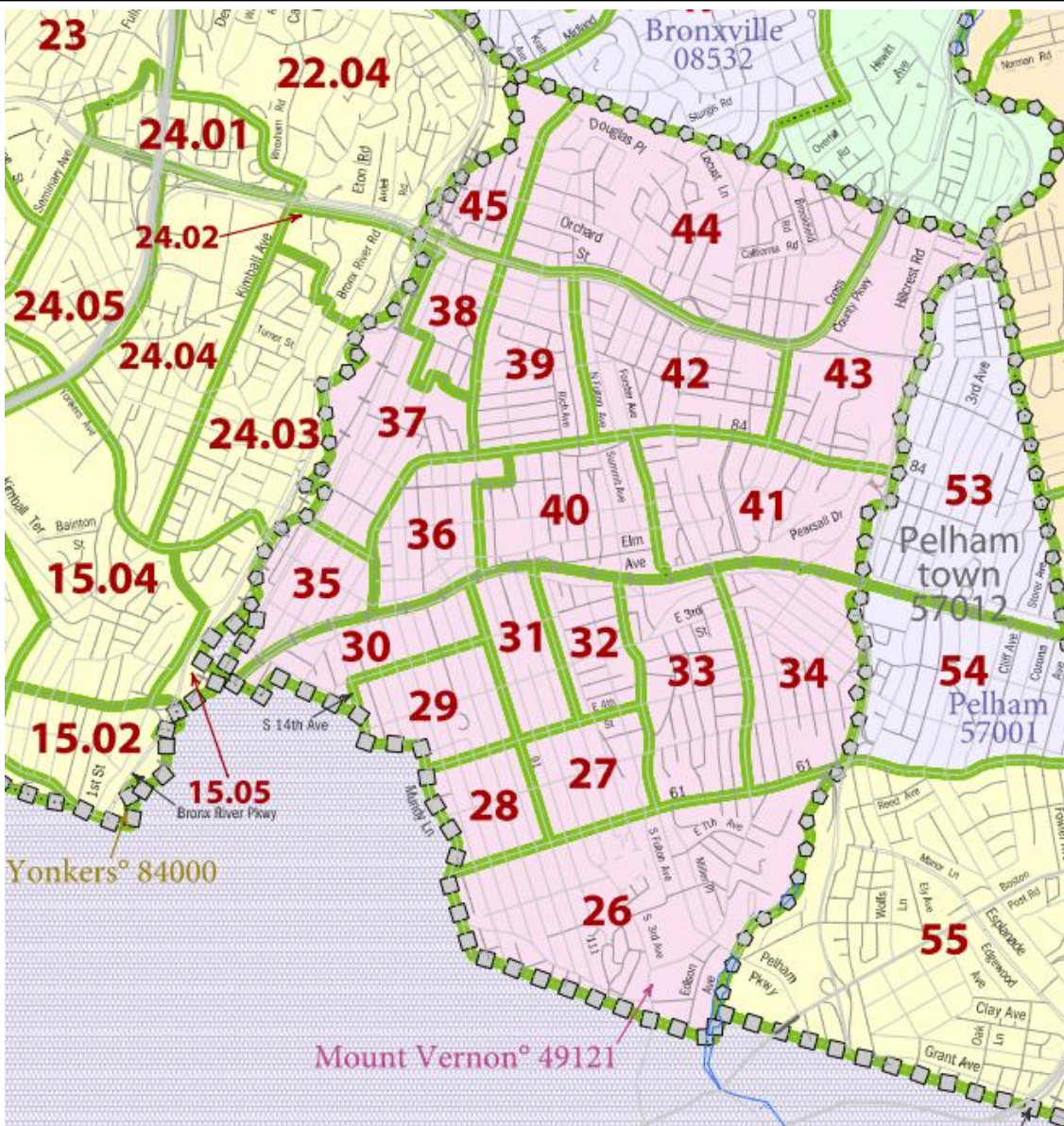
Source: U.S. Census Bureau American Community Survey; Calculations generated by StatsAmerica

Distress Criteria Statistical Report-Mt Vernon

Reference Date: All data are from the 2008-2012 Census ACS estimates

Region Consists of: 36119003600, 36119004000, 36119003500, 36119003700, 36119003000, 36119003100, 36119003200, 36119003300, 36119003400, 36119002900, 36119002700, 36119002600, 36119002800

Report Date: 3/13/2015 14:57



CENSUS TRACTS



Figure 23: MOUNT VERNON ECONOMICALLY DISTRESSED CENSUS TRACTS

City of Yonkers

Yonkers also exhibits fairly significant economic distress. In total, the census tracts examined have an unemployment rate 3.6 points higher than the U.S. average and per capita income is 56 percent that of the national average. Specific census tracts within Yonkers have unemployment that is 6 points greater than the national average. Per capita income is as low as 40 percent of the U.S. average.

Table 28: DISTRESS CRITERIA STATISTICAL REPORT-CITY of YONKERS, WESCHESTER COUNTY

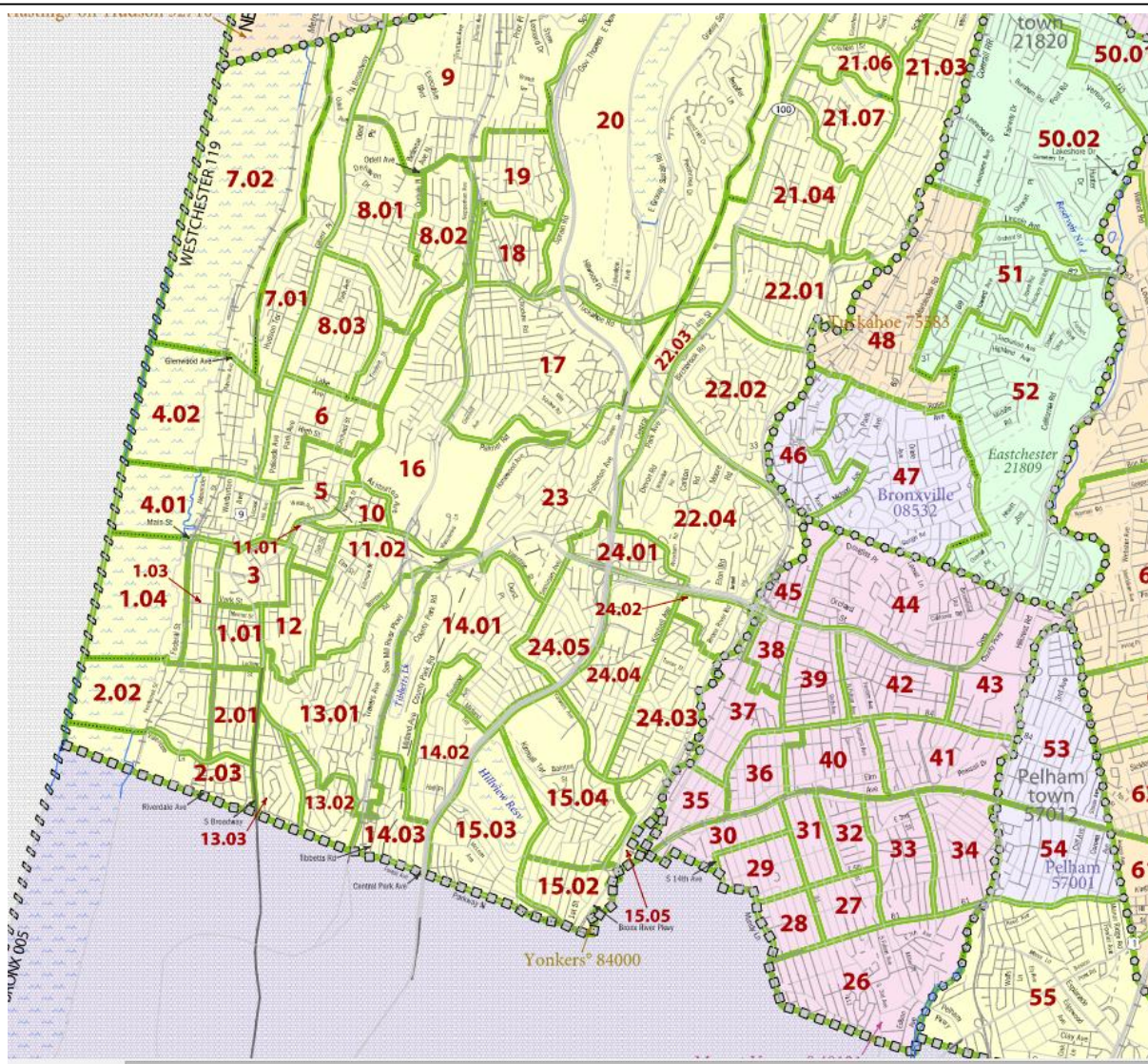
Economic Distress Criteria—Primary Elements				
	Yonkers	U.S.	Threshold Calculations	
2013 Unemployment Rate (5-Year ACS)	13.3	9.7	3.6	
2013 Per Capita Money Income (5-Year ACS)	\$15,775	\$28,155	56.03%	
Economic Distress Criteria—Geographic Components				
Census Tracts	Unemp. Rate 2013 ACS	Threshold Calculation	PCMI 2013 ACS	Threshold Calculation
Tract 0002.01 Westchester, NY	15.7	6	\$17,864	63.4
Tract 0003.00 Westchester, NY	12.6	2.9	\$14,016	49.8
Tract 0005.00 Westchester, NY	14.7	5	\$12,277	43.6
Tract 0006.00 Westchester, NY	11.7	2	\$17,149	60.9
Tract 0010.00 Westchester, NY	14.4	4.7	\$16,413	58.3
Tract 0011.01 Westchester, NY	12.7	3	\$11,266	40
Tract 0011.02 Westchester, NY	11.1	1.4	\$19,662	69.8
Tract 0012.00 Westchester, NY	11	1.3	\$13,888	49.3
Tract 0013.02 Westchester, NY	11.5	1.8	\$20,612	73.2
Tract 0013.03 Westchester, NY	16	6.3	\$13,123	46.6

Sources: U.S. Bureau of Census, Labor Statistics, and Economic Analysis; Calculations generated by StatsAmerica
Distress Criteria Statistical Report

Reference Date: All data is from Census ACS Estimates

Region Consists of: 36119001102, 36119001200, 36119000500, 36119001101, 36119000600, 36119001000, 36119000300, 36119000201, 36119001303, 36119001302

Report Date: 3/26/2015 13:02



CENSUS TRACTS

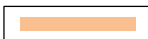


Figure 24: CITY of ONKERS ECONOMICALLY DISTRESSED CENSUS TRACTS

Village of Peekskill

Peekskill exhibits some economic distress. Of the three census tracts examined, the unemployment rate is only 0.5 points higher than the U.S. average. Per capita income is at 82.5 percent of the national average. The per capita income of one specific census tract within Peekskill is 62.5 percent of the national number.

Table 29: DISTRESS CRITERIA STATISTICAL REPORT-PEEKSKILL, WESCHESTER COUNTY

Economic Distress Criteria—Primary Elements				
	Peekskill	U.S.	Threshold Calculations	
2013 Unemployment Rate (5-Year ACS)	10.2	9.7	0.5	
2013 Per Capita Money Income (5-Year ACS)	\$23,238	\$28,155	82.54%	
Economic Distress Criteria—Geographic Components				
Census Tracts	Unemp. Rate 2013 ACS	Threshold Calculation	PCMI 2013 ACS	Threshold Calculation
Tract 0141.00 Westchester, NY	10.6	0.9	\$26,628	94.6
Tract 0142.00 Westchester, NY	10.1	0.4	\$23,347	82.9
Tract 0143.00 Westchester, NY	9.7	0	\$17,598	62.5

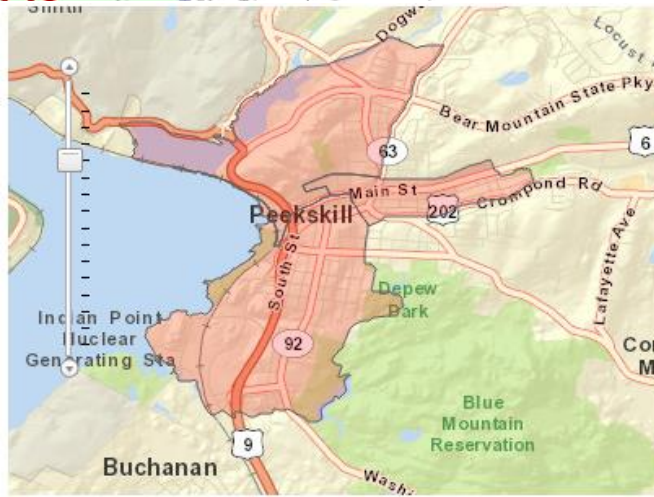
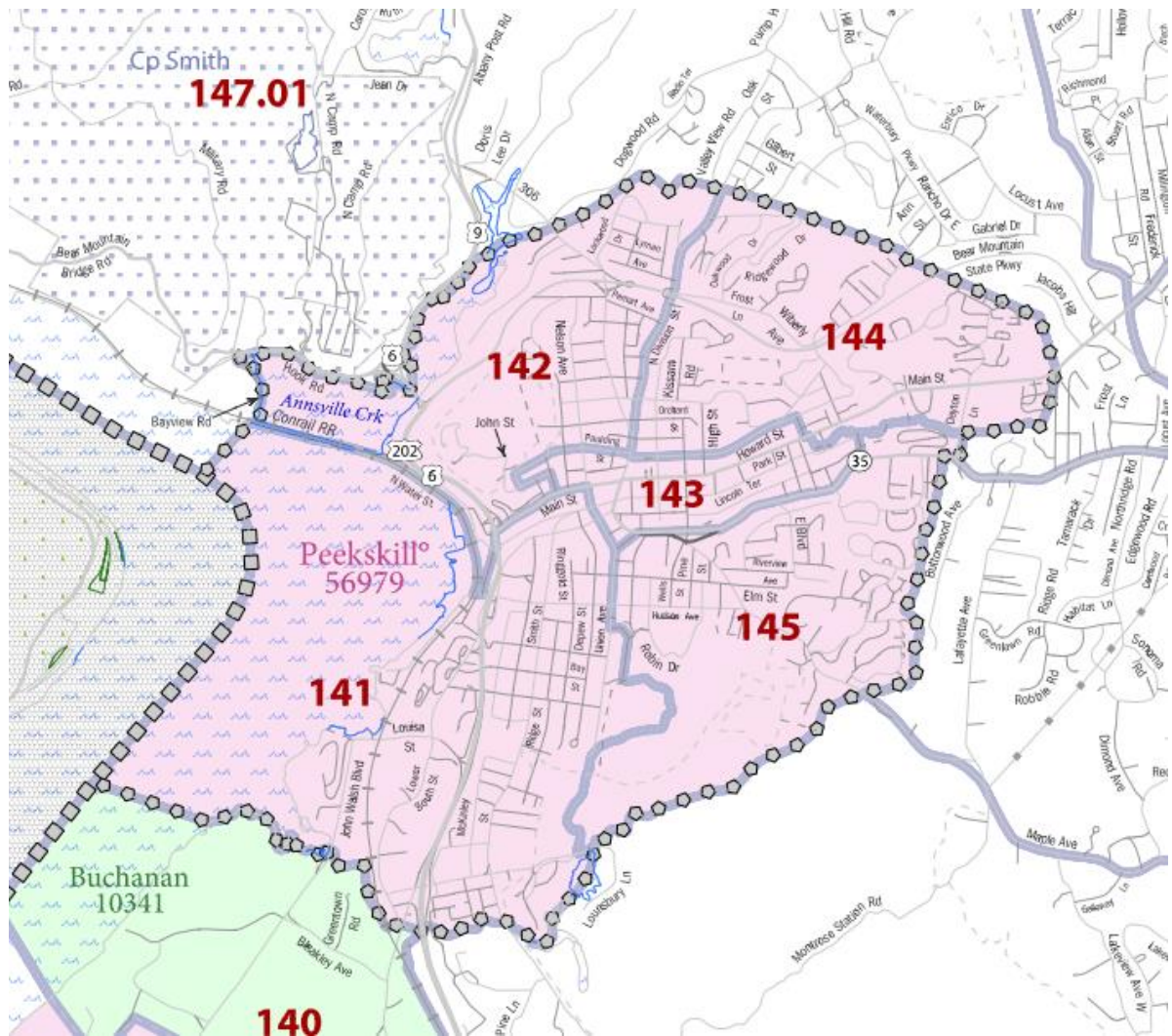
Sources: U.S. Bureau of Census, Labor Statistics, and Economic Analysis; Calculations generated by StatsAmerica.

Distress Criteria Statistical Report

Reference Date: All data is from Census ACS Estimates

Region Consists of: 36119014100, 36119014200, 36119014300

Report Date: 42089.58334




CENSUS TRACTS


Figure 25: PEEKSKILL ECONOMICALLY DISTRESSED CENSUS TRACTS

Village of Ossining

Ossining also exhibits fairly significant economic distress, primarily with regard to income. The census tract examined has an unemployment rate almost a point higher than the national number and per capita income is 66.4 percent that of the national average.

Table 30: DISTRESS CRITERIA STATISTICAL REPORT-OSSINING, WESCHESTER COUNTY

Economic Distress Criteria—Primary Elements				
	Ossining	U.S.	Threshold Calculations	
2013 Unemployment Rate (5-Year ACS)	10.6	9.7	0.9	
2013 Per Capita Money Income (5-Year ACS)	\$18,698	\$28,155	66.41%	
Economic Distress Criteria—Geographic Components				
Census Tract	Unemp. Rate 2013 ACS	Threshold Calculation	PCMI 2013 ACS	Threshold Calculation
Tract 0133.01 Westchester, NY	10.6	0.9	\$18,698	66.4

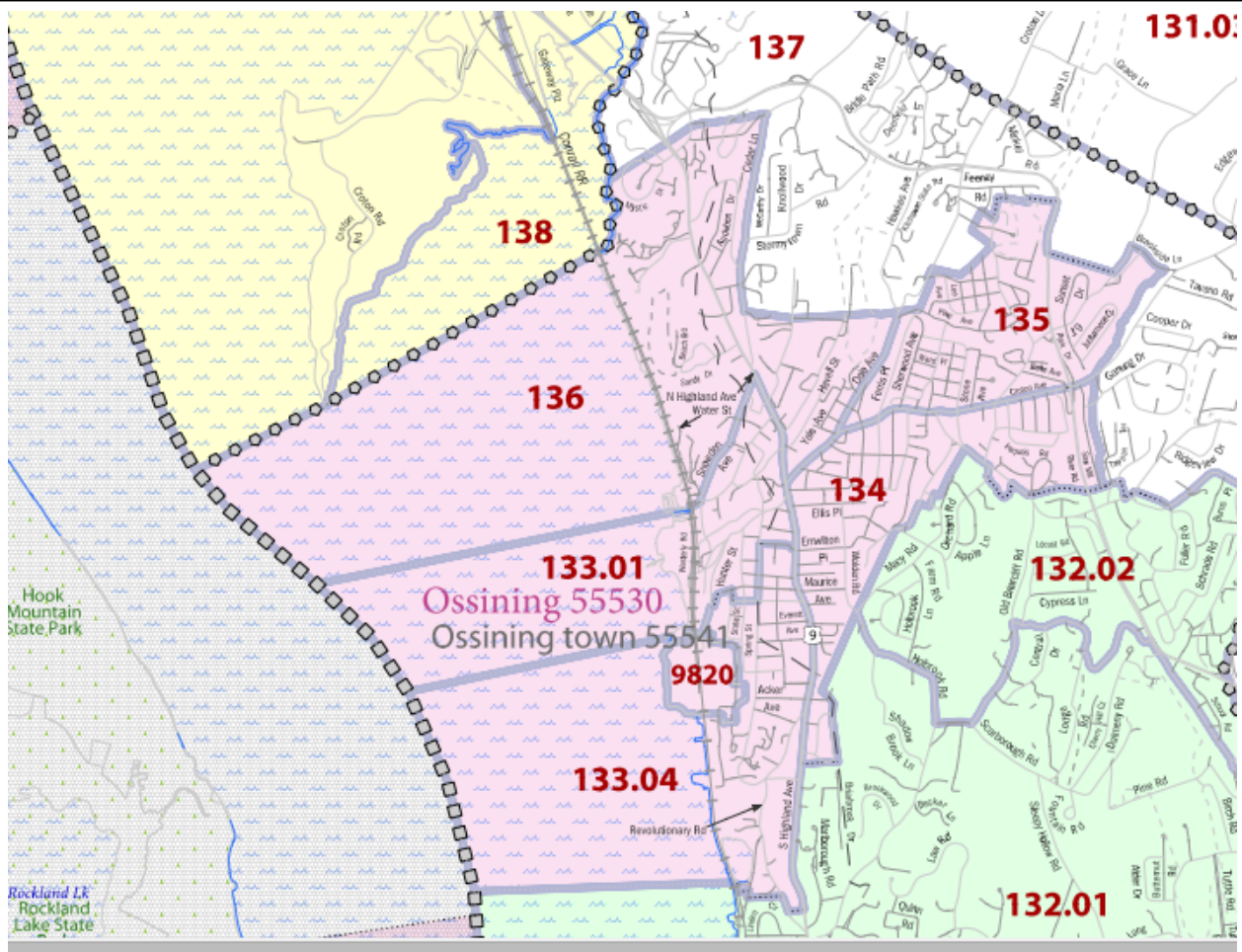
Sources: U.S. Bureau of Census, Labor Statistics, and Economic Analysis; Calculations generated by StatsAmerica.

Distress Criteria Statistical Report

Reference Date: All data is from Census ACS Estimates

Region Consists of: 36119013301

Report Date: 3/26/2015 13:45



CENSUS TRACTS

Figure 26: OSSINING CENSUS TRACT

III. APPENDICES

A. LEGEND U.S Census Bureau New York 2010 Census - Census Tract Reference Maps

LEGEND		
<u>SYMBOL DESCRIPTION</u>	<u>SYMBOL</u>	<u>LABEL STYLE</u>
Federal American Indian Reservation		L'ANSE RES 1880
Off-Reservation Trust Land, Hawaiian Home Land		T1880
Oklahoma Tribal Statistical Area, Alaska Native Village Statistical Area, Tribal Designated Statistical Area		<i>KAW OTSA 5340</i>
State American Indian Reservation		Tama Res 4125
State Designated Tribal Statistical Area		<i>Lumbee STSA 9815</i>
Alaska Native Regional Corporation		NANA ANRC 52120
State (or statistically equivalent entity)		NEW YORK 36
County (or statistically equivalent entity)		ERIE 029
Minor Civil Division (MCD) ^{1,2}		Bristol town 07485
Consolidated City		MILFORD 47500
Incorporated Place ^{1,3}		Davis 18100
Census Designated Place (CDP) ³		<i>Incline Village 35100</i>
Census Tract		33.07

<u>DESCRIPTION</u>	<u>SYMBOL</u>	<u>DESCRIPTION</u>	<u>SYMBOL</u>
Interstate		Water Body	
U.S. Highway		Swamp or Marsh	
State Highway		Glacier	
Other Road		Military	
4WD Trail, Stairway, Alley, Walkway, or Ferry		National or State Park, Forest, or Recreation Area	
Railroad		Inset Area	
Pipeline or Power Line		Outside Subject Area	
Ridge or Fence			
Property Line			
Nonvisible Boundary or Feature Not Elsewhere Classified			

Where state, county, and/or MCD boundaries coincide, the map shows the boundary symbol for only the highest-ranking of these boundaries.

- 1 A '°' following an MCD name denotes a false MCD. A '°' following a place name indicates that a false MCD exists with the same name and FIPS code as the place; the false MCD label is not shown.
- 2 MCD boundaries are shown in the following states in which MCDs have functioning governments: Connecticut, Maine, Massachusetts, Michigan, Minnesota, New Hampshire, New Jersey, New York, Pennsylvania, Rhode Island, Vermont, and Wisconsin.
- 3 Place label color correlates to the place fill color.

REFERENCES

Indiana Business Research Center

<http://www.ibrc.indiana.edu/>

StatsAmerica

<http://www.statsamerica.org/>

<http://www.statsamerica.org/distress/distress.aspx>

U.S Census Bureau New York 2010 Census - Census Tract Reference Maps

https://www.census.gov/geo/maps-data/maps/2010ref/st36_tract.html

U.S. Department of Commerce Economic Development Administration

<http://www.eda.gov/about/>

<http://www.eda.gov/annual-reports/fy2013/states/ny.htm>