

# **HUDSON VALLEY REGION DISTRESS CRITERIA STATISTICAL REPORT**



**October 2017**

**HUDSON VALLEY REGIONAL COUNCIL**

**3 Washington Center, Newburgh NY 12550**

**Updated by Niklas Moran**

## Contents

I.	INTRODUCTION .....	1
II.	HUDSON VALLEY REGION DISTRESS .....	4
A.	REGIONAL DISTRESS OVERVIEW .....	4
B.	DUTCHESS COUNTY .....	7
	City of Poughkeepsie .....	8
	City of Beacon.....	11
	Village of Tivoli .....	13
C.	ORANGE COUNTY .....	15
	City of Newburgh.....	16
	City of Middletown.....	19
	City of Port Jervis.....	21
D.	PUTNAM COUNTY .....	23
E.	ROCKLAND COUNTY .....	24
	Town of Ramapo/Spring Valley Area.....	27
	Village of Haverstraw .....	29
F.	SULLIVAN COUNTY.....	31
	Village and Town of Liberty .....	33
	Town of Thompson/Village of Monticello.....	36
G.	ULSTER COUNTY.....	38
	City of Kingston.....	39
	City of Kingston Area .....	41
	Village of Ellenville.....	42
	Town of Plattekill.....	43
H.	WESTCHESTER COUNTY .....	45
	City of Mount Vernon.....	46
	City of Yonkers.....	48
	City of Peekskill.....	51
	Village of Ossining .....	53
III.	APPENDICES.....	55
A.	LEGEND U.S Census Bureau New York 2010 Census - Census Tract Reference Maps .....	55
	REFERENCES .....	56



## HUDSON VALLEY REGION DISTRESS CRITERIA STATISTICAL REPORT

### I. INTRODUCTION

Through strategic investments that further job creation and encourage private investment, the U.S. Department of Commerce's Economic Development Administration (EDA) supports development in economically distressed areas throughout the United States.

The U.S. EDA's investment policy establishes a foundation for sustainable job growth and fosters durable regional economies throughout the United States. This foundation builds upon two key economic drivers - innovation and regional collaboration. Innovation is key to global competitiveness, new and better jobs, a resilient economy, and the attainment of national economic goals. Regional collaboration is essential for economic recovery because regions are the centers of competition in the new global economy and those that work together to leverage resources and use their strengths to overcome weaknesses will fare better than those that do not. <sup>1</sup>

During Fiscal Year 2016, EDA invested \$7,800,112 in 21 projects in the State of New York.<sup>2</sup>

**Table 1: 2016 EDA INVESTMENTS in NEW YORK**

Program	# of Grants	EDA Funds
Economic Adjustment Assistance	1	\$500,000
Assistance to Coal Communities	1	\$160,000
Public Works	2	\$4,142,000
Partnership Planning	11	\$723,520
Research and Evaluation	1	\$300,000
Technical Assistance	3	\$333,334
Trade Adjustment Assistance	2	\$1,641,258
Total	21	\$7,800,112

This report is intended to provide a snapshot of the economic distress in the Hudson Valley region based on 2015 data. Identifying communities within the region that exhibit economic distress, as defined by the EDA, is important in determining eligibility for EDA investment assistance. EDA grants are designed to leverage existing regional assets to support the implementation of economic development strategies that advance innovative ideas and creative approaches to advance economic prosperity in distressed communities.

---

<sup>1</sup> <http://www.eda.gov/about/>

<sup>2</sup> <http://www.eda.gov/annual-reports/fy2016/states/ny.htm>

To be eligible for investment assistance under parts 305 or 307 of EDA regulations, the project must be in a region that, on the date EDA receives an application for investment assistance, is subject to one (or more) of the following economic distress criteria:

- (i) An unemployment rate that is, for the most recent 24-month period for which data are available, at least 1 percentage point greater than the national average unemployment rate;
- (ii) Per capita income that is, for the most recent period for which data are available, 80 percent or less of the national average per capita income; or
- (iii) A special need, as determined by EDA.

For the purposes of this report, economic distress is defined by any combination of:

- An average 24- month unemployment rate above the national average as calculated by the Bureau of Labor Statistics – Local Area Unemployment Statistics.<sup>3</sup>
- An average Per Capita Money Income (PCMI) level below the national average as measured by the U.S Census Bureau’s American Communities Survey.<sup>4</sup>
- An average Per Capita Personal Income (PCPI) level below the national average as measured by the U.S Department of Commerce, Bureau of Economic Analysis.<sup>5</sup>

Economic distress that is based on both employment and income are the primary basis of this report. Distress statistical reports are only provided for those areas in the region that exhibit both employment and income distress.

Graphics, however, are provided for each county in the region that exhibits either one or the other - employment or income distress. Distress statistical reports are not provided for areas within the region that exhibit just employment or income distress, except if those regions were included in a previous report. The Hudson Valley Regional Council can work with counties and municipalities across the region to gather additional income and employment statistics to create reports for EDA funding applications.

Economic distress statistics in this report are from [StatsAmerica’s Measuring Distress](#) tool<sup>6</sup>. StatsAmerica is a service of the [Indiana Business Research Center](#) (IBRC) at Indiana University's Kelley School of Business. With support from the EDA, the IBRC developed a unique and useful set of tools and reports. It also provides access to information about other EDA-funded projects. Thousands of data items and data sets are obtained from dozens of federal and state sources, along with some commercial or private source data. While StatsAmerica adds value to these data through easy access and functionality, the direct agency source of the data on every table, profile or map is acknowledged. The goal of StatsAmerica is to provide

---

<sup>3</sup> <http://www.bls.gov/lau/#tables>

<sup>4</sup> [http://www.census.gov/acs/www/data\\_documentation/data\\_main/](http://www.census.gov/acs/www/data_documentation/data_main/)

<sup>5</sup> <http://www.bea.gov/regional/downloadzip.cfm>

<sup>6</sup> <http://www.statsamerica.org/distress/distress.aspx>

actionable data for economic developers to use in site requests, developing metrics, grant writing and strategic planning.

Using data assembled from the U.S. Bureaus of Census, Labor Statistics, and Economic Analysis, unemployment rates and per capita money income (PCMI) are provided for the Hudson Valley's seven-county region: Dutchess, Orange, Putnam, Rockland, Sullivan, Ulster and Westchester. Unemployment data and PCMI are also provided for each of the seven counties individually, as well as the cities and urban centers within each of the counties. Census tracts with economic distress are identified within those cities and urban centers.

Each of the tables in this report provides unemployment and income data. For unemployment data the threshold calculation is the difference between the unemployment rate for the geographic area – i.e. the county or the census tracts selected – and the national unemployment rate. For example, if the unemployment rate for Dutchess County is 6.12 percent and the U.S figure is 6.77, the threshold calculation is -0.65. This indicates that the county does not exhibit economic distress. Income data comes from one of three sources, including the 3-year and 5-year American Community Survey (ACS) data and Bureau of Economic Analysis data. For PCMI the selected area's per capita value is divided by the national per capita income and shown as a percentage share of the national figure. For example, Dutchess County's PCMI of \$33,923 is 117.26 percent of the national PCMI of \$27884, based on the 2015 ACS.

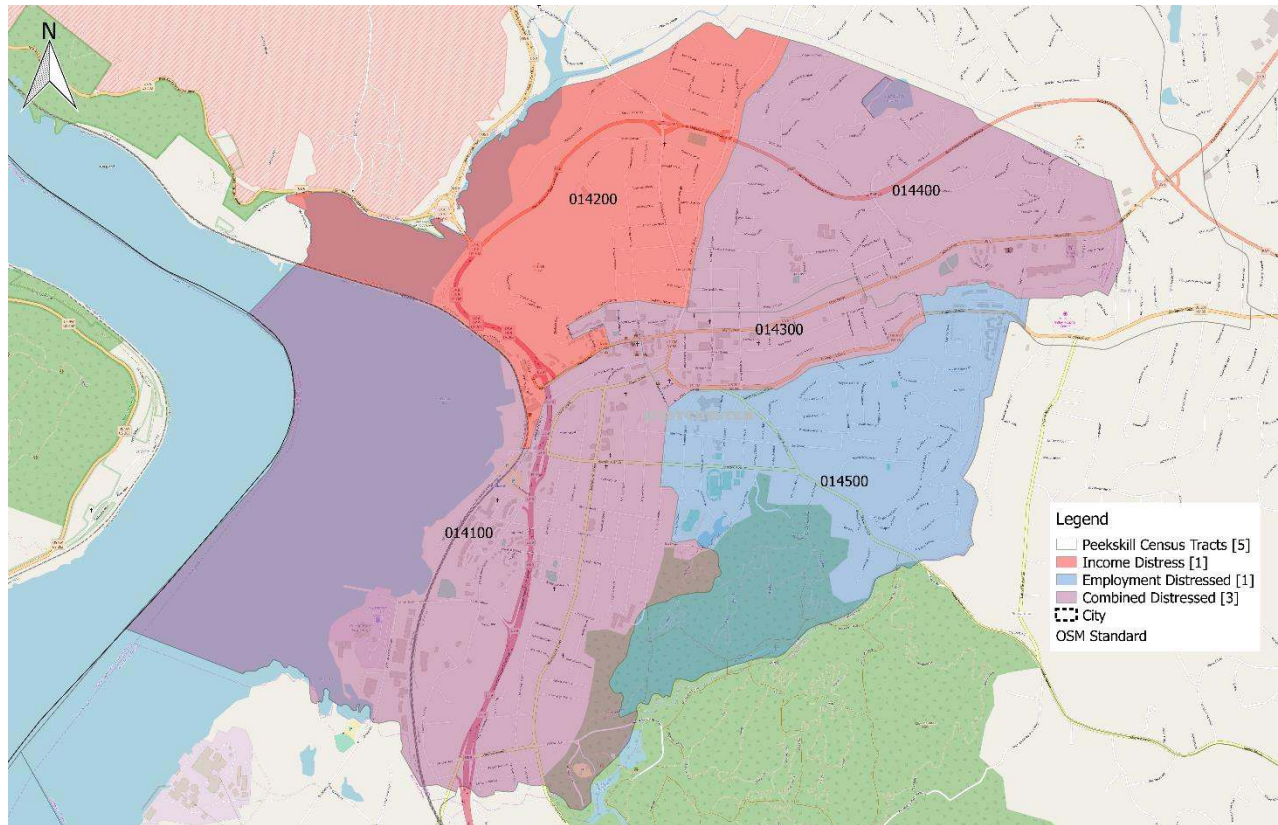
Census tract maps are provided for each city, urban center or area that exhibits economic distress. Census tract maps were generated using the U.S Census Bureau [New York 2010 Census - Census Tract Reference Maps](https://www.census.gov/geo/maps-data/maps/2010ref/st36_tract.html)<sup>7</sup>. Census tract numbers on these maps correspond to the census tract numbers in the Distress Criteria Statistical Report for each area. A legend for the Census Tract Reference Maps is provided in Appendix A.

Maps of the economically distressed census tracts are also provided as generated by [StatsAmerica](http://www.statsamerica.org/distress/distress.aspx)<sup>8</sup>. The StatsAmerica census tract maps highlight the census tracts in a light orange brown shaded area. An example is provided below in Figure 1.

---

<sup>7</sup> [https://www.census.gov/geo/maps-data/maps/2010ref/st36\\_tract.html](https://www.census.gov/geo/maps-data/maps/2010ref/st36_tract.html)

<sup>8</sup> <http://www.statsamerica.org/distress/distress.aspx>



**Figure 1: CENSUS TRACT MAP – RELEVANT TRACTS SHADED**

## II. HUDSON VALLEY REGION DISTRESS

### A. REGIONAL DISTRESS OVERVIEW

While unemployment rates have dropped and per capita income in the Hudson Valley looks healthy, there are still pockets of economic distress throughout the region. Similar to poverty, unemployment tends to be higher in central cities, lower in the suburban ring, and higher again in rural areas.

The region's overall unemployment rate fluctuated in 2016, never surpassing 4.5 percent. This is an improvement over 2015 where unemployment was 5.4 percent in January.

**Table 2: HUDSON VALLEY REGION UNEMPLOYMENT RATE**

Year	Jan	Feb	March	April	May	June	July	August	Sept	Oct	Nov	Dec
2016	4.5%	4.5%	4.3%	4.0%	3.9%	4.2%	4.4%	4.3%	4.5%	4.2%	4.1%	4.1%

In addition, the U.S. Bureau of Labor Statistics 24-Month average unemployment rate for the Hudson Valley region, ending August 2017, was 4.28 percent. This is slightly lower (-0.48) than the national unemployment rate of 4.76 percent for the same time period. Per capita money income for the Hudson Valley region in

2015 was significantly greater than the U.S. per capita income. The region's per capita personal income is similarly greater than U.S per capita personal income.

**Table 3: HUDSON VALLEY REGION DISTRESS CRITERIA STATISTICAL REPORT**

<b>Hudson Valley Region Distress Criteria Statistical Report</b>	<b>Hudson Valley</b>	<b>U.S.</b>	<b>Threshold Calculations</b>
<b>24-Month Average Unemployment Rate</b> (BLS) ending August 2017	<b>4.28%</b>	<b>4.76%</b>	<b>-0.48</b>
<b>2015 Per Capita Money Income</b> (5 Year ACS)	<b>\$39,591</b>	<b>\$28,930</b>	<b>136.85%</b>
<b>2015 Per Capita Personal Income</b> (BEA)	<b>\$67,794</b>	<b>\$48,112</b>	<b>140.9%</b>
<b>2000 Per Capita Money Income</b> (Decennial Census)	<b>\$29,384</b>	<b>\$21,587</b>	<b>136%</b>

Sources: U.S. Bureau of Census, Labor Statistics, and Economic Analysis; Calculations generated by StatsAmerica March 9, 2015

Reference Date: 8 / 2017 (All data elements refer to this date or earlier.)

Region Consists of: Dutchess Co. NY, Orange Co. NY, Putnam Co. NY, Rockland Co. NY, Sullivan Co. NY, Ulster Co. NY, Westchester Co. NY

Report Date: 10/10/2017 3:33:16 PM

While in the 2015 report Sullivan County exhibited economic distress, the data shows this is no longer the case. Sullivan County's unemployment rate is 0.02 percent lower than the national rate. All four income measures demonstrate income distress in Sullivan County with three of the four being below 90 percent of the U.S. income.

Dutchess, Putnam, Rockland and Westchester Counties show healthy employment and income figures. While not quite as economically healthy as other counties in the region, Orange and Ulster Counties are about on par with the U.S averages.



**Table 4: HUDSON VALLEY COUNTY DISTRESS CRITERIA REPORT**

Economic Distress Criteria - Geographic Components								
	24 Month Unemp	Threshold Calculation	BEA PCPI	Threshold Calculation	Census PCMI (2000)	Threshold Calculation	ACS 5-Year PCMI	Threshold Calculation
Dutchess County	4.17	-0.59	\$48,921	101.7	\$23,940	110.9	\$33,923	117.3
Orange County	4.33	-0.43	\$46,513	96.7	\$21,597	100	\$31,023	107.2
Putnam County	4.03	-0.73	\$59,160	123	\$30,127	139.6	\$41,173	142.3
Rockland County	4.18	-0.58	\$54,838	114	\$28,082	130.1	\$34,647	119.8
Sullivan County	4.76	0	\$42,053	87.4	\$18,892	87.5	\$25,742	89
Ulster County	4.43	-0.33	\$44,422	92.3	\$20,846	96.6	\$30,732	106.2
Westchester County	4.28	-0.48	\$93,229	193.8	\$36,726	170.1	\$48,885	169

Sources: U.S. Bureau of Census, Labor Statistics, and Economic Analysis; Calculations generated by StatsAmerica.

Reference Date: 8 / 2017 (All data elements refer to this date or earlier.)

Region Consists of: Dutchess Co. NY, Orange Co. NY, Putnam Co. NY, Rockland Co. NY, Sullivan Co. NY, Ulster Co. NY, Westchester Co. NY

Report Date: 10/10/2017 2:52:34 PM

## B. DUTCHESS COUNTY

Dutchess County shows economic stability, with 5-year per capita income of more than 17 percent above average, and slightly lower unemployment than the national average over the 24-month period ending August 2017. As seen in Figure 2, the pockets of economic distress, both high unemployment and low income, are clustered around the urban center of Poughkeepsie and the Village of Tivoli. Figure 2 also demonstrates that employment distress is more common across the county than income distress. Employment distress is seen in the north portion of the county as well as southeast and throughout portions of the southwest part of the county.

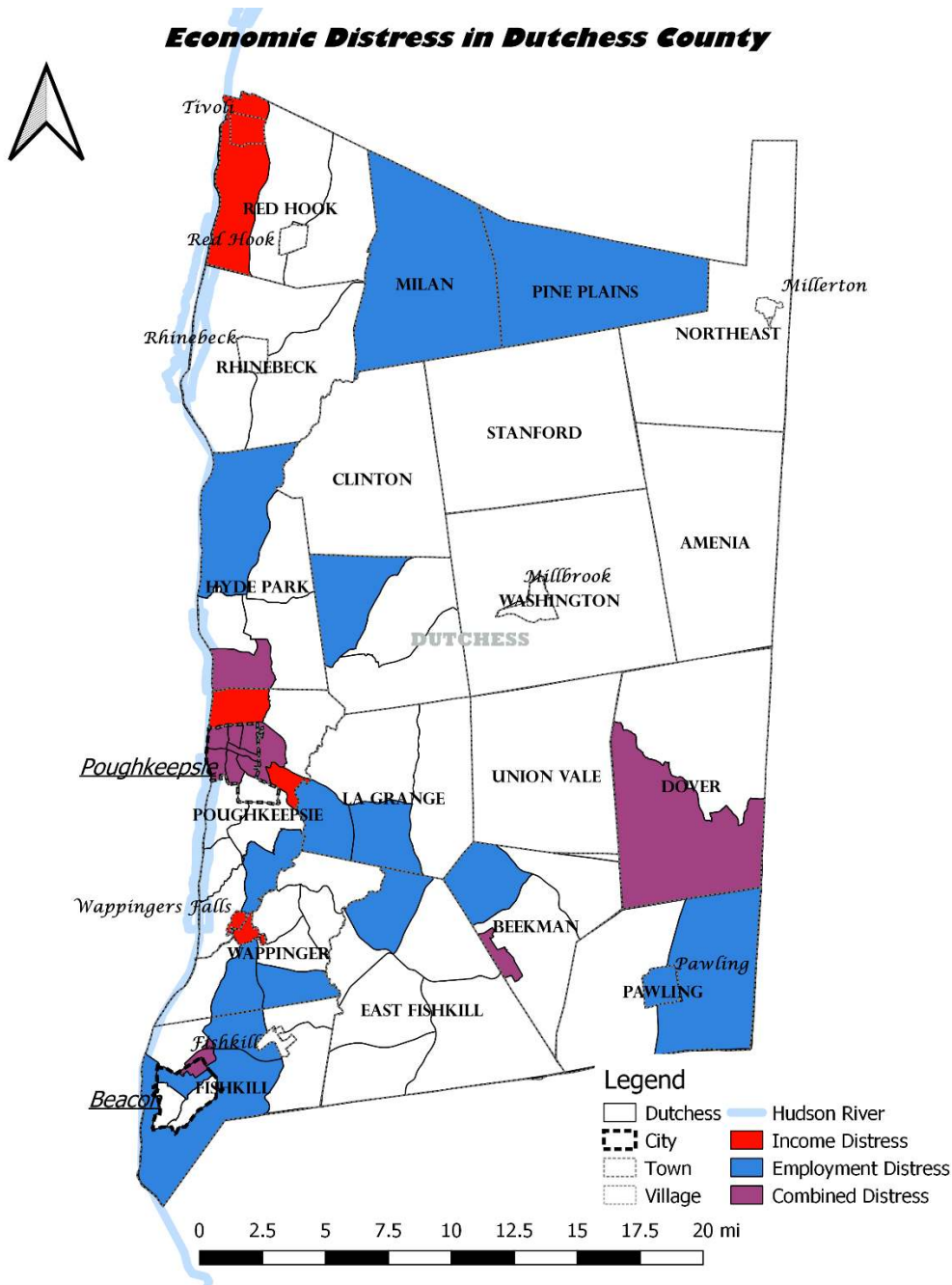


Figure 2: DUTCHESS COUNTY ECONOMIC DISTRESS

**Table 5: DISTRESS CRITERIA STATISTICAL REPORT-DUTCHESS COUNTY**

Economic Distress Criteria—Primary Elements			
	Dutchess County	U.S.	Threshold Calculations
24-month Average Unemployment Rate (BLS) period ending August 2017	4.17	4.76	-0.59
2015 Per Capita Money Income (5-year ACS)	\$33,923	\$28,930	117.26%
2015 Per Capita Personal Income (BEA)	\$48,921	\$48,112	101.68%
2000 Per Capita Money Income (Decennial Census)	\$23,940	\$21,587	110.90%

Source: U.S. Census Bureau American Community Survey; Calculations generated by StatsAmerica.

Reference Date: 8 / 2017 (All data elements refer to this date or earlier.)

Region Consists of: Dutchess Co. NY

Report Date: 10/10/2017 2:58:49 PM

## City of Poughkeepsie

Seven out of the eight census tracts in the City of Poughkeepsie exhibit economic distress as summarized in Table 6. Census tract 2208.01 shows unemployment distress but not income distress even though the 2015 PCMI decreased from 2013 from \$32,859 to \$28,242. Only census tract 2210.01 in the southeastern part of Poughkeepsie is not distressed. Unemployment has increased in two census tracts: 2209.01 and 2211.00. Unemployment rates are over 13 points higher in some areas, and income levels are close to half the national PCMI average. For the City, unemployment and income have remained the same between 2013 and 2015 with a 16 percent unemployment rate and a PCMI 73 percent of the national income.

**Table 6 : DISTRESS CRITERIA STATISTICAL REPORT- CITY of POUGHKEEPSIE, DUTCHESS COUNTY**

	City of Poughkeepsie	U.S.	Threshold Calculations	
2015 Unemployment Rate (5-Year ACS)	16.3	8.3	8	
2015 Per Capita Money Income (5-Year ACS)	\$21,113	\$28,930	72.98%	
Economic Distress Criteria—Geographic Components				
Census Tracts	Unemp. Rate 2015 ACS	Threshold Calculation	PCMI 2015 ACS	Threshold Calculation
Tract 2201.00 Dutchess, NY	21.8	13.5	\$22,687	78.4
Tract 2202.01 Dutchess, NY	20.0	11.7	\$16,241	56.1
Tract 2203.00 Dutchess, NY	16.1	7.8	\$15,797	54.6
Tract 2207.00 Dutchess, NY	16.4	8.1	\$24,734	85.5
Tract 2208.01 Dutchess, NY	12.2	3.9	\$28,242	97.6
Tract 2209.01 Dutchess, NY	15.1	6.8	\$25,030	86.5
Tract 2211.00 Dutchess, NY	13.5	5.2	\$16,092	55.6

Source: U.S. Census Bureau American Community Survey; Calculations generated by StatsAmerica

Distress Criteria Statistical Report

Reference Date: All data is from Census ACS Estimates

Region Consists of: 36027220201, 36027220300, 36027220801, 36027220901, 36027221100, 36027220100, 36027220700  
Report Date: 10/10/2017 2:23:29 PM



**City of Poughkeepsie**



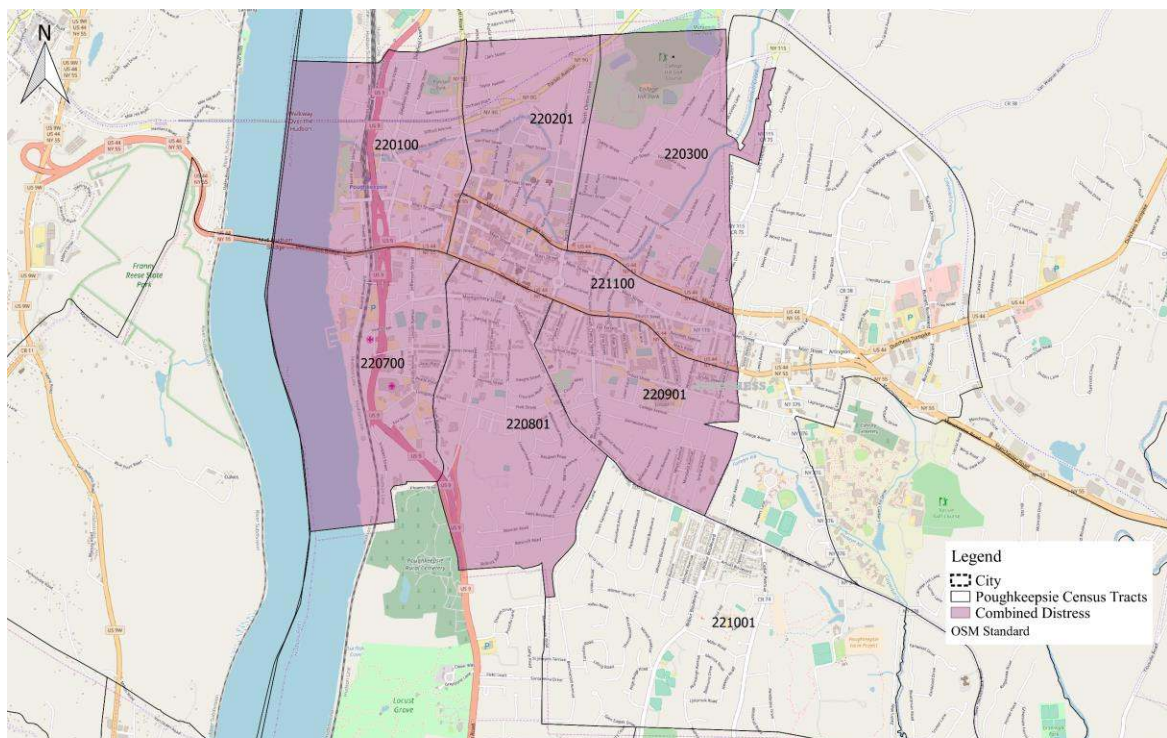
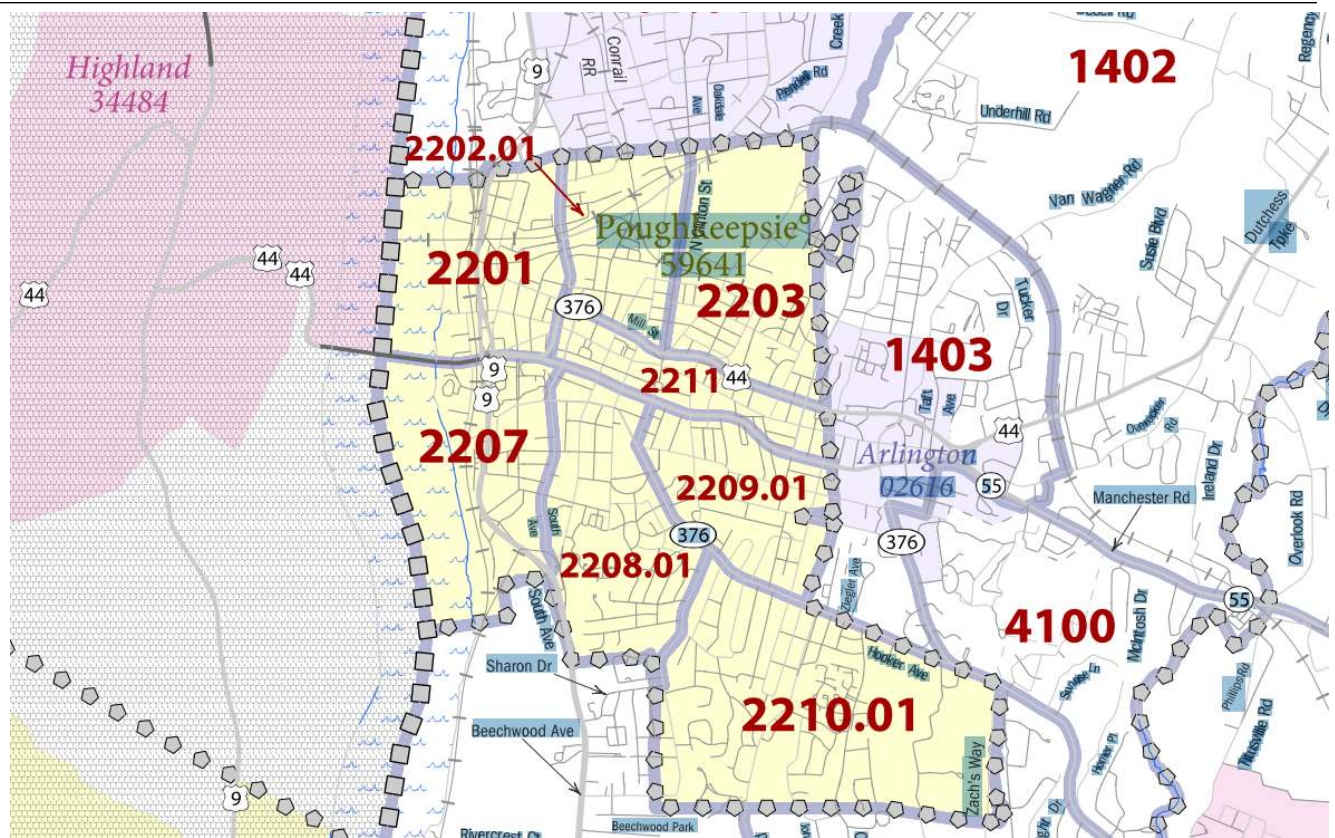


Figure 3: CITY OF POUGHKEEPSIE ECONOMICALLY DISTRESSED CENSUS TRACTS

## City of Beacon

The City of Beacon has four census tracts, with its northernmost tract exhibiting combined distress and the neighboring tract to the south experiencing unemployment distress. Tract 6400.02 has an unemployment rate 37.6 percent greater than the national average and a PCMI that is less than 40 percent. The location of the two census tracts within Beacon and the tract bordering Beacon to the south in Fishkill is depicted in Figure 4.

**Table 7: DISTRESS CRITERIA STATISTICAL REPORT-CITY of BEACON, DUTCHESS COUNTY**

Economic Distress Criteria—Primary Elements				
	Beacon	U.S.	Threshold Calculations	
2015 Unemployment Rate (5-Year ACS)	16.5	8.3	8.2	
2015 Per Capita Money Income (5-Year ACS)	\$26,106	\$28,930	90.24%	
Economic Distress Criteria—Geographic Components				
Census Tracts	Unemp. Rate 2015 ACS	Threshold Calculation	PCMI 2015 ACS	Threshold Calculation
Tract 2101.01 Dutchess, NY	16.1	7.8	\$30,365	105
Tract 6400.02 Dutchess, NY	45.9	37.6	\$10,761	37

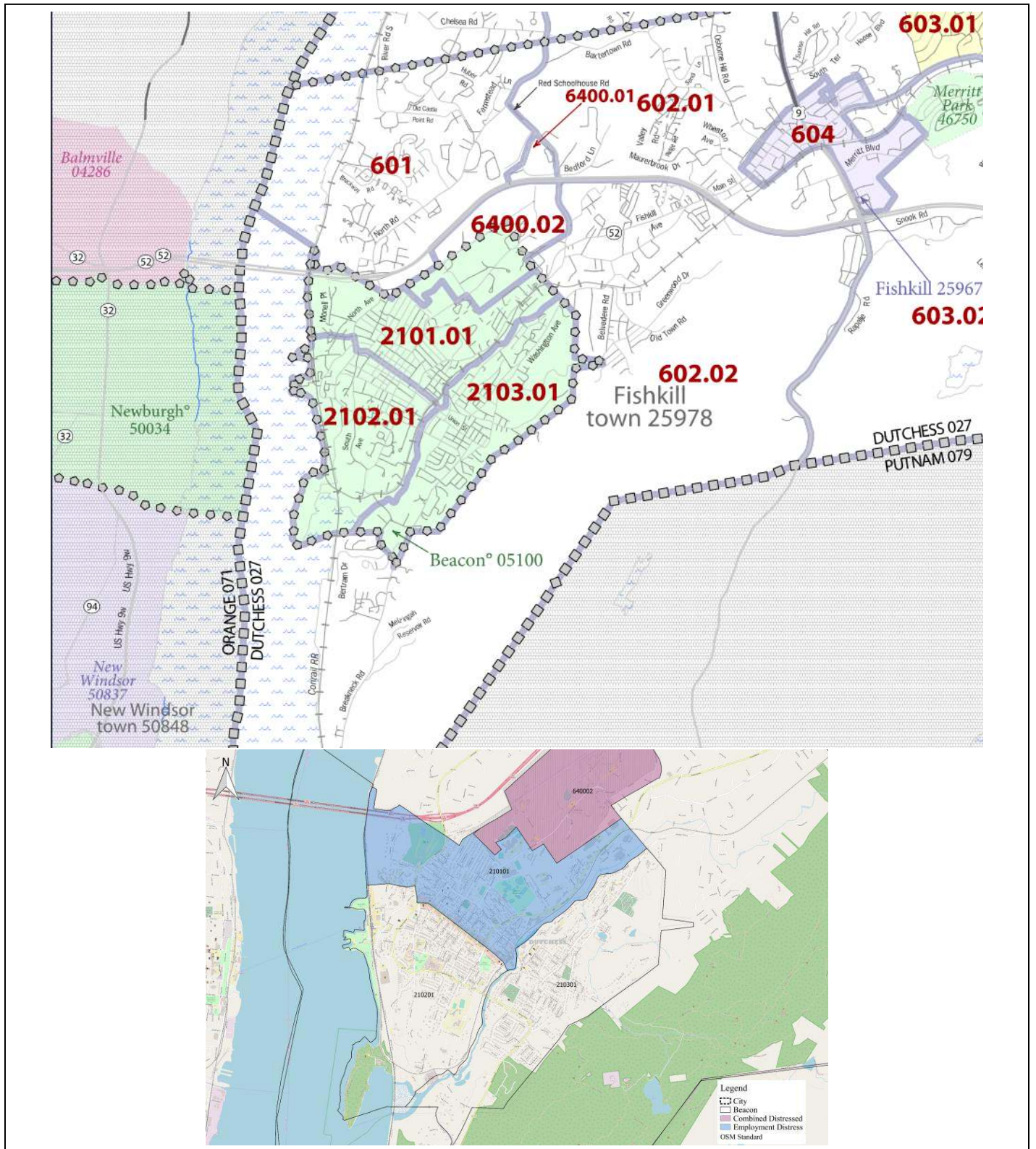
Sources: U.S. Bureau of Census, Labor Statistics, and Economic Analysis; Calculations generated by StatsAmerica. Distress Criteria Statistical Report

Reference Date: All data is from Census ACS Estimates

Region Consists of: 36027210201, 36027640002

Report Date: 8/28/2017 2:41:40 PM





## Village of Tivoli

The census tract that envelopes the Village of Tivoli and the surrounding area exhibits income distress with a PCMI lower than the national average. Since the 2015 report, the Village of Tivoli's distress has improved and is only income distressed.

**Table 8: DISTRESS CRITERIA STATISTICAL REPORT: TIVOLI-BARRYTOWN, DUTCHESS COUNTY**

Economic Distress Criteria—Primary Elements				
	Tivoli -Barrytown	U.S.	Threshold Calculations	
2015 Unemployment Rate (5-Year ACS)	6.6	8.3	-1.7	
2015 Per Capita Money Income (5-Year ACS)	\$18,266	\$28,930	63.14%	
Economic Distress Criteria—Geographic Components				
Census Tract	Unemp. Rate 2015 ACS	Threshold Calculation	PCMI 2015 ACS	Threshold Calculation
Tract 1500.03 Dutchess, NY	6.6	-1.7	\$18,255	63.1

Source: U.S. Census Bureau American Community Survey; Calculations generated by StatsAmerica.

Distress Criteria Statistical Report

Reference Date: All data are from the 2008-2012 Census ACS estimates

Region Consists of: 36027150003

Report Date: 8/28/2017 3:44:08 PM



**Village of Tivoli**



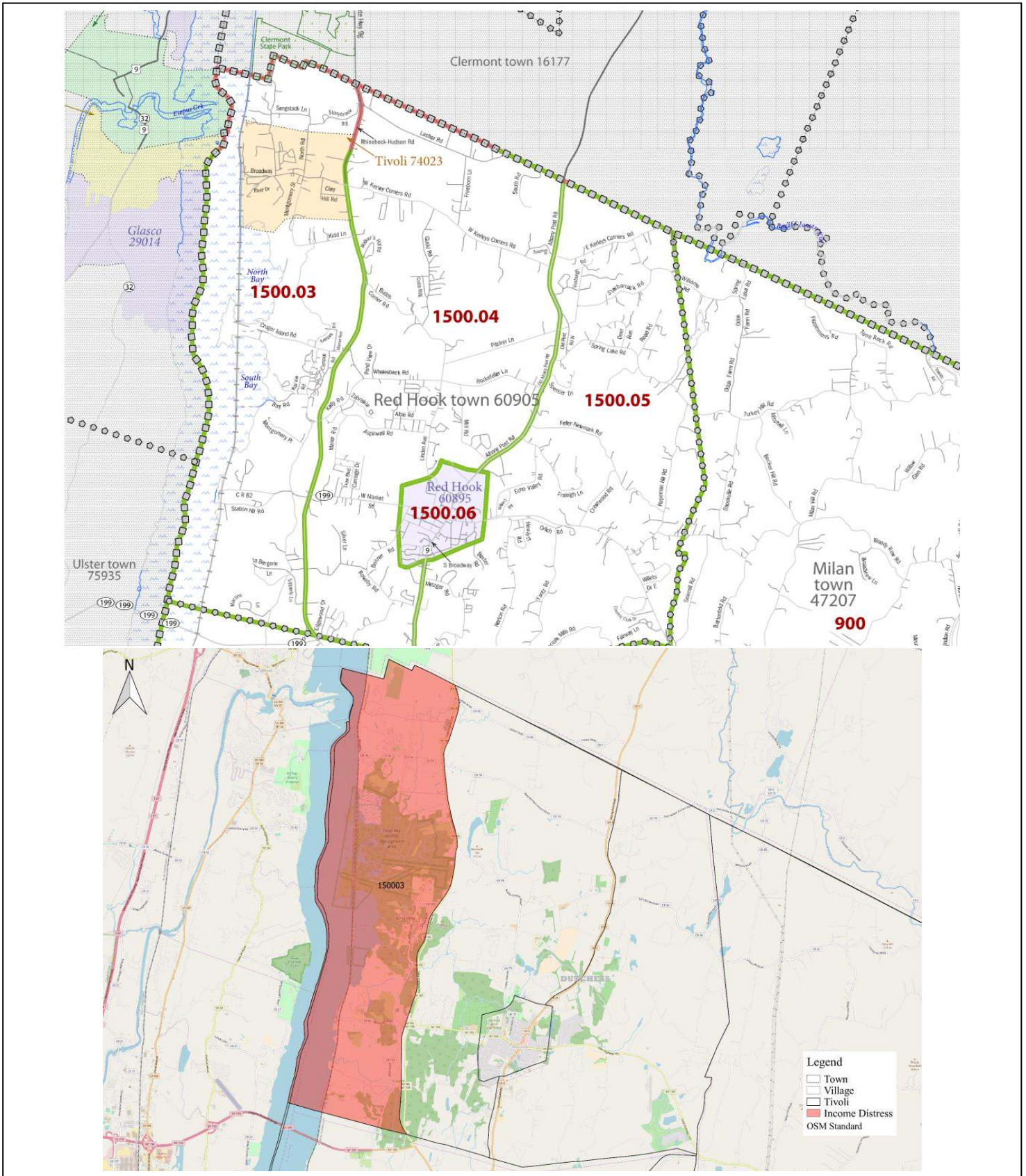


Figure 5: VILLAGE of TIVOLI ECONOMICALLY DISTRESSED CENSUS TRACT

## C. ORANGE COUNTY

Orange County exhibits close to average employment, just slightly lower than the national rate over the 24-month period ending August 2017. Per capita personal income as reported by the BEA is slightly below U.S. averages for 2015. Pockets of employment and income distress are scattered throughout the county.

As shown in Tables 9 and 10 the Cities of Newburgh and Middletown continue to show significant economic distress with the cities having either significantly higher unemployment rates or lower incomes; fulfilling both distress criteria.

As seen in Figure 5, Highland Falls and Mount Hope exhibit income distress. Orange County's combined distress tracts are in the three cities, Newburgh, Middletown, and Port Jervis with some surrounding tracts showing income or unemployment distress.

**Table 9: DISTRESS CRITERIA STATISTICAL REPORT-ORANGE COUNTY**

Distress Criteria Statistical Report			
Economic Distress Criteria—Primary Elements			
	Orange County	U.S.	Threshold Calculations
24-month Average Unemployment Rate (BLS) period ending August 2017	4.33	4.76	-0.43
2015 Per Capita Money Income (5-year ACS)	\$31,023	\$28,930	107.23%
2015 Per Capita Personal Income (BEA)	\$46,513	\$48,112	96.68%
2000 Per Capita Money Income (Decennial Census)	\$21,597	\$21,587	100.05%

Source: U.S. Census Bureau American Community Survey; Calculations generated by StatsAmerica.

Reference Date: 08 / 2017 (All data elements refer to this date or earlier.)

Region Consists of: Orange Co. NY

Report Date: 10/10/2017 3:06:13 PM

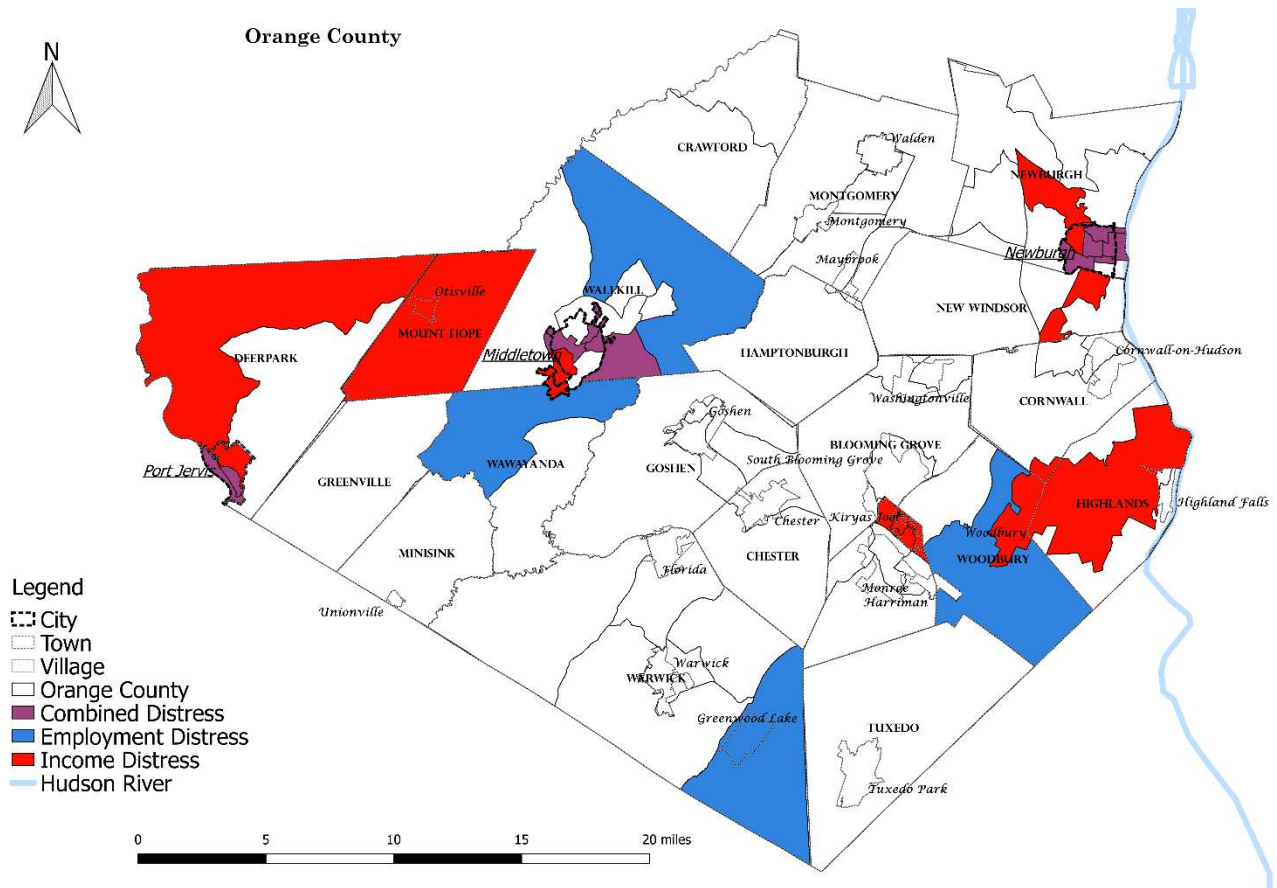


Figure 6: ORANGE COUNTY ECONOMIC DISTRESS

### City of Newburgh

The distress levels for the City of Newburgh are shown in Table 9. Newburgh's seven census tracts all exhibit income distress with a combined PCMI of only 55 percent of the national average. Unemployment and income distress increased for tract 0004.00 from 2013, increasing from 19.3% unemployment to 21.0% and the PCMI declined from \$16,979 to \$15,235. Only one tract, 0002.00 has an unemployment rate better than the national average. Even though tract 0002.00 only displays income distress, it was included because PCMI is 20% less than the national average.

Table 10: DISTRESS CRITERIA STATISTICAL REPORT- CITY of NEWBURGH, ORANGE COUNTY

Economic Distress Criteria—Primary Elements				
	Newburgh	U.S.	Threshold Calculations	
2015 Unemployment Rate (5-Year ACS)	11.2	8.3	2.9	
2015 Per Capita Money Income (5-Year ACS)	\$16,138	\$28,930	55.78%	
Economic Distress Criteria—Geographic Components				
Census Tracts	Unemp. Rate 2015 ACS	Threshold Calculation	PCMI 2015 ACS	Threshold Calculation
Tract 0001.00 Orange, NY	10.0	1.7	\$19,880	68.7

Tract 0002.00 Orange, NY	6.6	-1.7	\$23,165	80.1
Tract 0003.00 Orange, NY	9.2	0.9	\$15,410	53.3
Tract 0004.00 Orange, NY	21.0	12.7	\$15,235	52.7
Tract 0005.01 Orange, NY	11.8	2.1	\$12,997	46.2
Tract 0005.02 Orange, NY	9.7	1.4	\$13,063	45.2
Tract 0006.00 Orange, NY	10.6	2.3	\$15,975	55.2

Reference Date: All data is from Census ACS Estimates

Region Consists of: 36071000300, 36071000200, 36071000600, 36071000400, 36071000502, 36071000501, 36071000100

Report Date: 8/28/2017 4:05:52 PM





## City of Middletown

Of Middletown's six tracts, four met both distress criteria with an unemployment rate 3.5 points higher than the U.S. average. The most unemployed distress tract is 4.2 points higher. Per capita money income is less than seventy percent of the U.S., with specific tracts having a PCMI of less than 57 percent of the national income. Tract 13 in the north is the only census tract that is not distressed.

**Table 11: DISTRESS CRITERIA STATISTICAL REPORT - CITY of MIDDLETOWN, ORANGE COUNTY**

Economic Distress Criteria—Primary Elements				
	Middletown	U.S.	Threshold Calculations	
2015 Unemployment Rate (5-Year ACS)	11.8	8.3	3.5	
2015 Per Capita Money Income (5-Year ACS)	\$20,071	\$28,930	69.38%	
Economic Distress Criteria—Geographic Components				
Census Tracts	Unemp. Rate 2015 ACS	Threshold Calculation	PCMI 2015 ACS	Threshold Calculation
Tract 0011.00 Orange, NY	12.0	3.7	\$23,205	80.2
Tract 0012.00 Orange, NY	10.8	2.5	\$16,473	56.9
Tract 0015.00 Orange, NY	12.5	4.2	\$20,892	72.2
Tract 0151.00 Orange, NY	11.2	2.9	\$18,426	63.7

Source: U.S. Census Bureau American Community Survey; Calculations generated by StatsAmerica.

Distress Criteria Statistical Report

Region Consists of: 36071001100, 36071001200, 36071001500, 36071015100

Report Date: 8/29/2017 3:53:15 PM



**Middletown, NY**



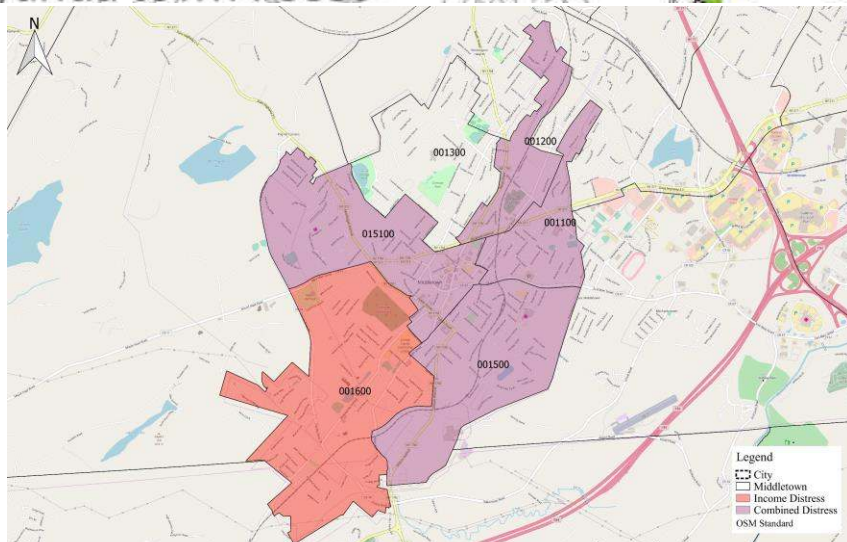
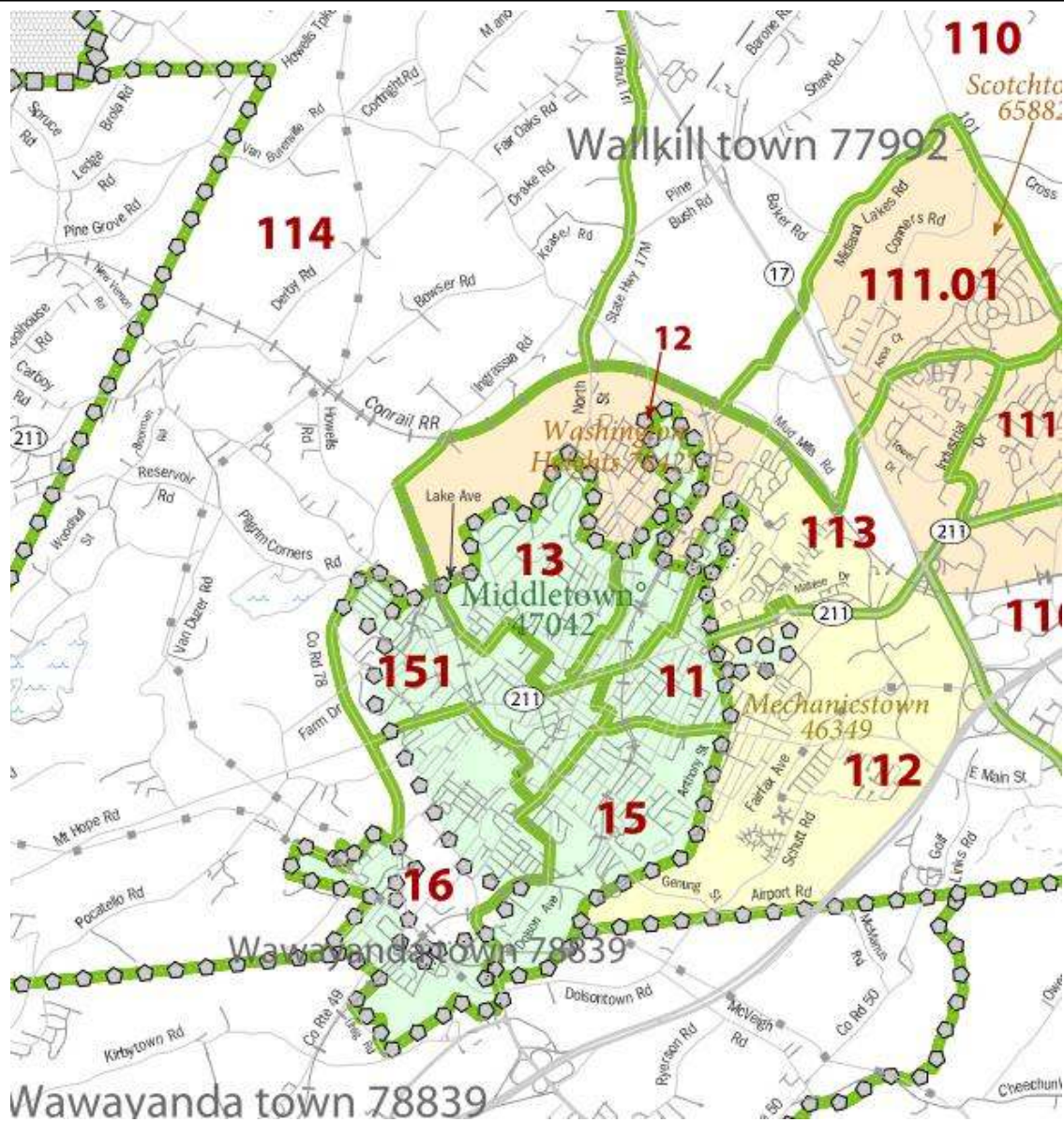


Figure 8: CITY of MIDDLETOWN ECONOMICALLY DISTRESSED CENSUS TRACTS

## City of Port Jervis

The City of Port Jervis exhibits economic distress. For the two tracts examined the unemployment rate is more than 2.5 percentage points about the national rate and PCMI is less than 80 percent.

**Table 12: DISTRESS CRITERIA STATISTICAL REPORT-CITY of PORT JERVIS, ORANGE COUNTY**

Economic Distress Criteria—Primary Elements				
	Port Jervis	U.S.	Threshold Calculations	
2015 Unemployment Rate (5-Year ACS)	10.5	8.3	2.2	
2015 Per Capita Money Income (5-Year ACS)	\$20,580	\$28,930	71.14%	
Economic Distress Criteria—Geographic Components				
Census Tracts	Unemp. Rate 2015 ACS	Threshold Calculation	PCMI 2015 ACS	Threshold Calculation
Tract 0022.00 Orange, NY	10.8	2.5	\$19,669	68
Tract 0023.00 Orange, NY	10.0	1.7	\$22,332	77.2

Sources: U.S. Bureaus of Census, Labor Statistics, and Economic Analysis; Calculations generated by StatsAmerica.

Distress Criteria Statistical Report

Reference Date: All data is from Census ACS Estimates

Region Consists of: 36071002200, 36071002300

Report Date: 10/11/2017 6:00:22 PM



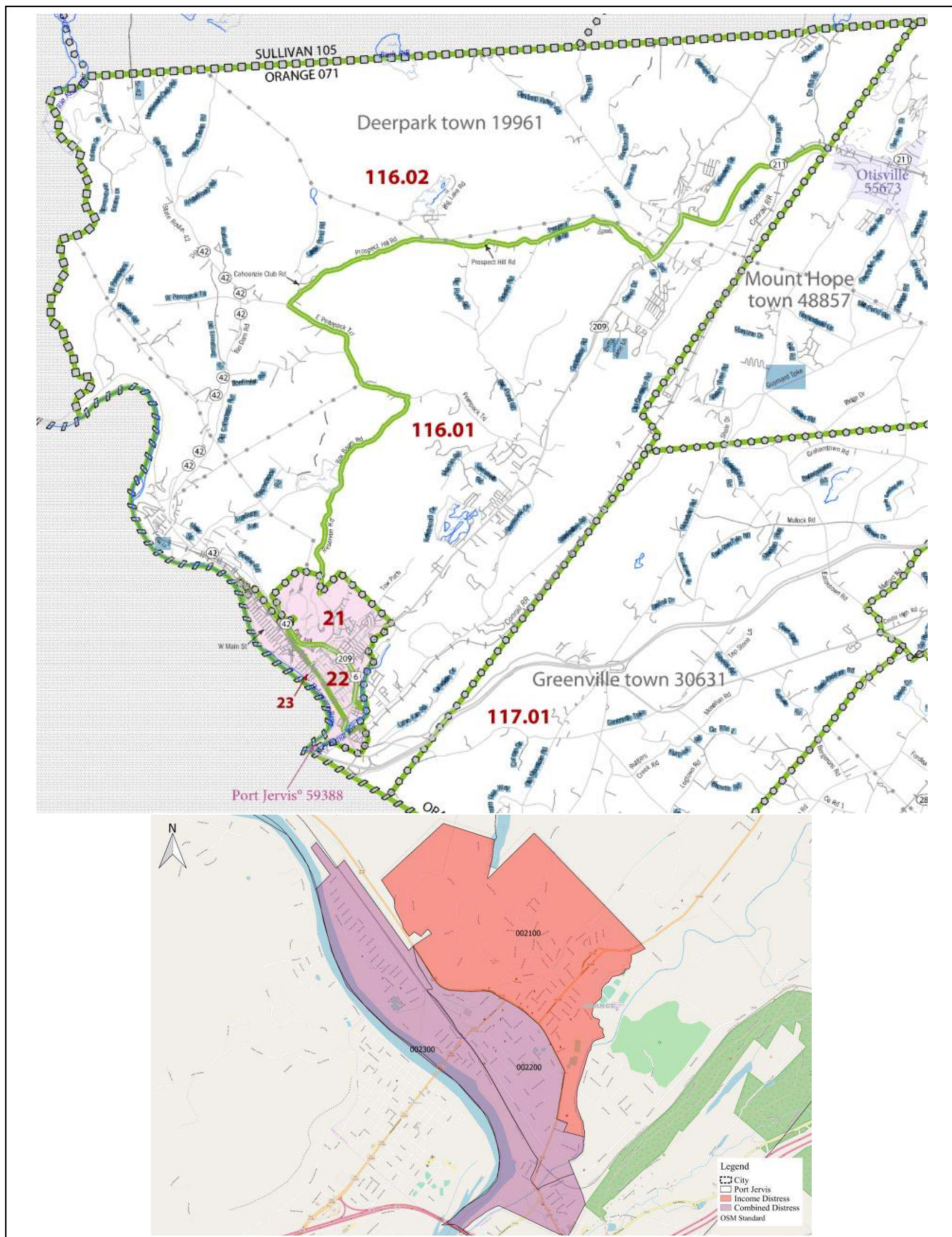


Figure 9: CITY of PORT JERVIS ECONOMICALLY DISTRESSED CENSUS TRACTS

## D. PUTNAM COUNTY

Putnam County does not exhibit any combined economic distress. Its unemployment is lower than average, and the county boasts higher than average personal income. Putnam County is the only county in the Hudson Valley region that does not have any tract with lower than average income. Putnam County does have a tract with unemployment distress in Carmel.

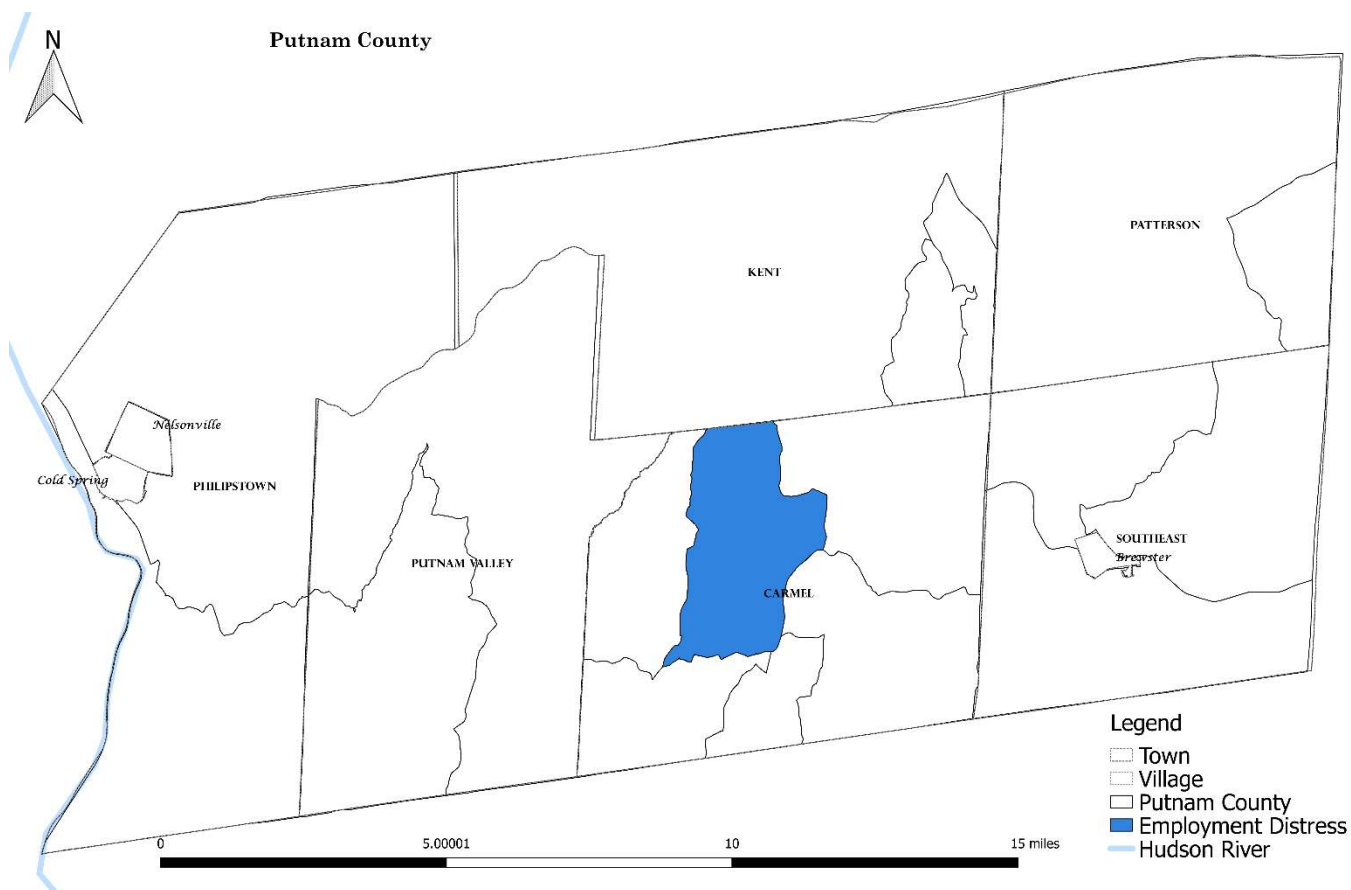


Figure 10: PUTNAM COUNTY ECONOMIC DISTRESS

**Table 13: DISTRESS CRITERIA STATISTICAL REPORT-PUTNAM COUNTY**

Distress Criteria Statistical Report			
Economic Distress Criteria—Primary Elements			
	Putnam County	U.S.	Threshold Calculations
24-month Average Unemployment Rate (BLS) period ending August 2017	4.03	4.76	-0.73
2015 Per Capita Money Income (5-year ACS)	\$41,173	\$28,930	142.32%
2015 Per Capita Personal Income (BEA)	\$59,160	\$48,112	122.96%
2000 Per Capita Money Income (Decennial Census)	\$30,127	\$21,587	139.56%

Source: U.S. Census Bureau American Community Survey; Calculations generated by StatsAmerica.

Reference Date: 08 / 2017 (All data elements refer to this date or earlier.)

Region Consists of: Putnam Co. NY

Report Date: 10/6/2017 3:06:13 PM

## E. ROCKLAND COUNTY

Rockland County also does not exhibit any economic distress. Its unemployment as a county is below average, and personal income is above average, as shown in Table 12. Unemployment rates are slightly less than one point under the U.S average and PCMI averages are almost 20 percent above the national PCMI. Despite this, pockets of distress remain, particularly around the urban centers in the Spring Valley area and Haverstraw where both income and employment distress are evident. Except for a tract in Nyack, the tracts that were distressed in the 2015 distress report remain distressed. Furthermore, the distress has only spread outward from those distressed tracts.



## Rockland County

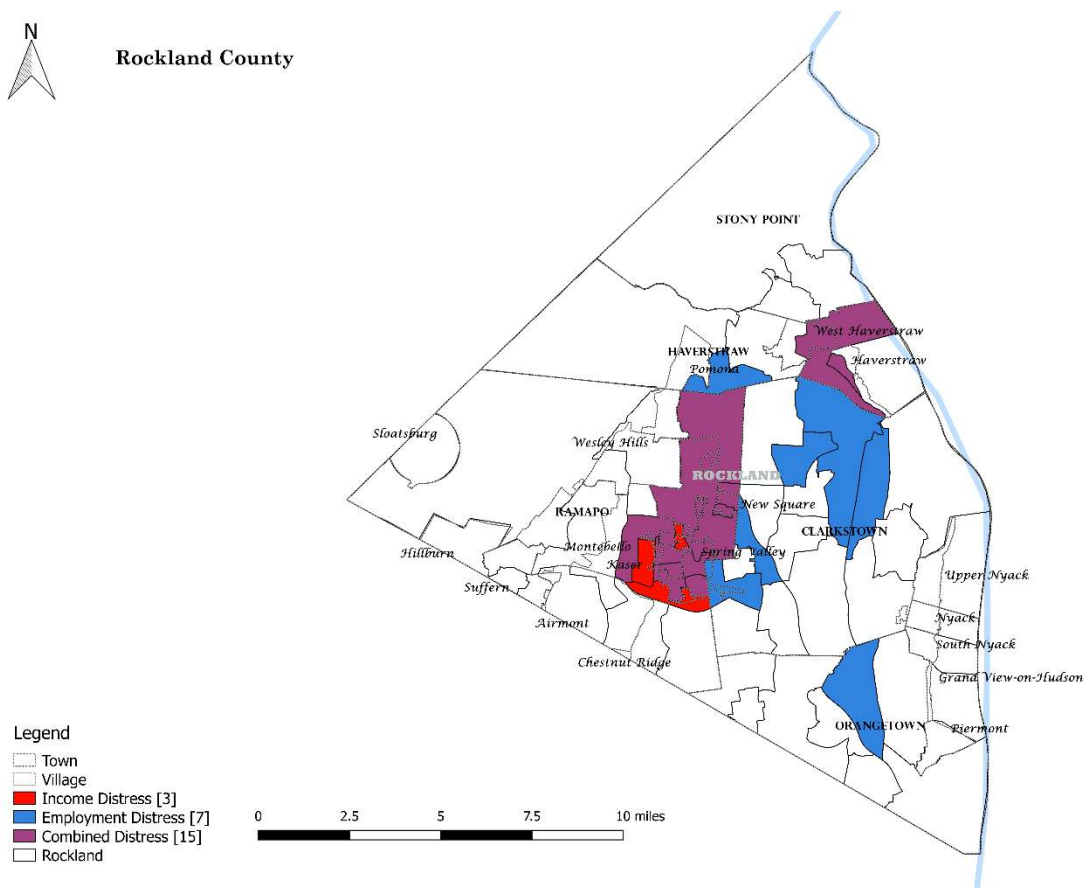


Figure 11: ROCKLAND COUNTY ECONOMIC DISTRESS

**Table 14: DISTRESS CRITERIA STATISTICAL REPORT-ROCKLAND COUNTY**

Distress Criteria Statistical Report			
Economic Distress Criteria—Primary Elements			
	Rockland County	U.S.	Threshold Calculations
24-month Average Unemployment Rate (BLS) period ending August 2017	4.18	4.76	-0.58
2015 Per Capita Money Income (5-year ACS)	\$34,647	\$28,930	119.76%
2015 Per Capita Personal Income (BEA)	\$54,838	\$48,112	113.98%
2000 Per Capita Money Income (Decennial Census)	\$28,082	\$21,587	130.09%

Source: U.S. Census Bureau American Community Survey; Calculations generated by StatsAmerica.

Reference Date: 8 / 2017 (All data elements refer to this date or earlier.)

Region Consists of: Rockland Co. NY

Report Date: 10/6/2017 9:39:44 PM

**Table 15: DISTRESS CRITERIA STATISTICAL REPORT-ROCKLAND COUNTY ALL DISTRESSED CENSUS TRACTS**

Economic Distress Criteria—Primary Elements				
	Region	U.S.	Threshold Calculations	
2015 Unemployment Rate (5-Year ACS)	11.1	8.3	2.8	
2015 Per Capita Money Income (5-Year ACS)	\$17,455	\$28,930	60.34%	
Economic Distress Criteria—Geographic Components				
Census Tracts	Unemp. Rate 2015 ACS	Threshold Calculation	PCMI 2015 ACS	Threshold Calculation
Tract 0105.02 Rockland, NY	13.6	5.3	\$31,461	108.7
Tract 0106.02 Rockland, NY	9.5	1.2	\$23,493	81.2
Tract 0107.01 Rockland, NY	12.2	3.9	\$27,563	95.3
Tract 0107.02 Rockland, NY	10.7	2.4	\$17,637	61
Tract 0113.01 Rockland, NY	13.5	5.2	\$30,923	106.9
Tract 0115.02 Rockland, NY	9.4	1.1	\$27,718	95.8
Tract 0115.04 Rockland, NY	8.9	0.6	\$28,388	98.1
Tract 0115.05 Rockland, NY	11.4	3.1	\$7,631	26.4
Tract 0115.06 Rockland, NY	11.5	3.2	\$7,251	25.1
Tract 0121.01 Rockland, NY	13.4	5.1	\$17,605	60.9
Tract 0121.02 Rockland, NY	8.7	0.4	\$7,685	26.6
Tract 0121.03 Rockland, NY	5.2	-3.1	\$12,412	42.9
Tract 0121.05 Rockland, NY	10.1	1.8	\$9,242	31.9
Tract 0121.06 Rockland, NY	5.9	-2.4	\$12,858	44.4
Tract 0122.02 Rockland, NY	13.9	5.6	\$20,610	71.2
Tract 0122.04 Rockland, NY	6.4	-1.9	\$10,098	34.9
Tract 0123.00 Rockland, NY	16.9	8.6	\$13,997	48.4
Tract 0124.01 Rockland, NY	9.7	1.4	\$24,025	83



Tract 0124.02 Rockland, NY	12.4	4.1	\$17,692	61.2
----------------------------	------	-----	----------	------

Reference Date: All data is from Census ACS Estimates

Region Consists of: 36087011502, 36087011504, 36087012101, 36087012102, 36087012105, 36087012106, 36087012202, 36087012203, 36087012204, 36087012300, 36087012401, 36087012402, 36087012103, 36087011506, 36087011301, 36087011505, 36087010602, 36087010701, 36087010702, 36087010502

Report Date: 10/12/2017 5:23:18 PM

## Town of Ramapo/Spring Valley Area

**Table 16: DISTRESS CRITERIA STATISTICAL REPORT- RAMAPO/SPRING VALLEY AREA, ROCKLAND COUNTY**

Economic Distress Criteria—Primary Elements				
	Region	U.S.	Threshold Calculations	
2015 Unemployment Rate (5-Year ACS)	11.1	8.3	2.9	
2015 Per Capita Money Income (5-Year ACS)	\$19,087	\$28,930	65.98%	
Economic Distress Criteria—Geographic Components				
Census Tracts	Unemp. Rate 2015 ACS	Threshold Calculation	PCMI 2015 ACS	Threshold Calculation
Tract 0113.01 Rockland, NY	13.5	5.2	\$30,923	106.9
Tract 0115.02 Rockland, NY	9.4	1.1	\$27,718	95.8
Tract 0115.04 Rockland, NY	8.9	0.6	\$28,388	98.1
Tract 0115.05 Rockland, NY	11.4	3.1	\$7,631	26.4
Tract 0115.06 Rockland, NY	11.5	3.2	\$7,251	25.1
Tract 0121.01 Rockland, NY	13.4	5.1	\$17,605	60.9
Tract 0121.02 Rockland, NY	8.7	0.4	\$7,685	26.6
Tract 0121.03 Rockland, NY	5.2	-3.1	\$12,412	42.9
Tract 0121.05 Rockland, NY	10.1	1.8	\$9,242	31.9
Tract 0121.06 Rockland, NY	5.9	-2.4	\$12,858	44.4
Tract 0122.02 Rockland, NY	13.9	5.6	\$20,610	71.2
Tract 0122.04 Rockland, NY	6.4	-1.9	\$10,098	34.9
Tract 0123.00 Rockland, NY	16.9	8.6	\$13,997	48.4
Tract 0124.01 Rockland, NY	9.7	1.4	\$24,025	83
Tract 0124.02 Rockland, NY	12.4	4.1	\$17,692	61.2

Reference Date: All data is from Census ACS Estimates

Region Consists of: 36087011301, 36087011502, 36087011504, 36087011505, 36087011506, 36087012102, 36087012106, 36087012202, 36087012204, 36087012300, 36087012401, 36087012402, 36087012101, 36087012103, 36087012203, 36087012105

Report Date: 10/12/2017 1:14:58 AM

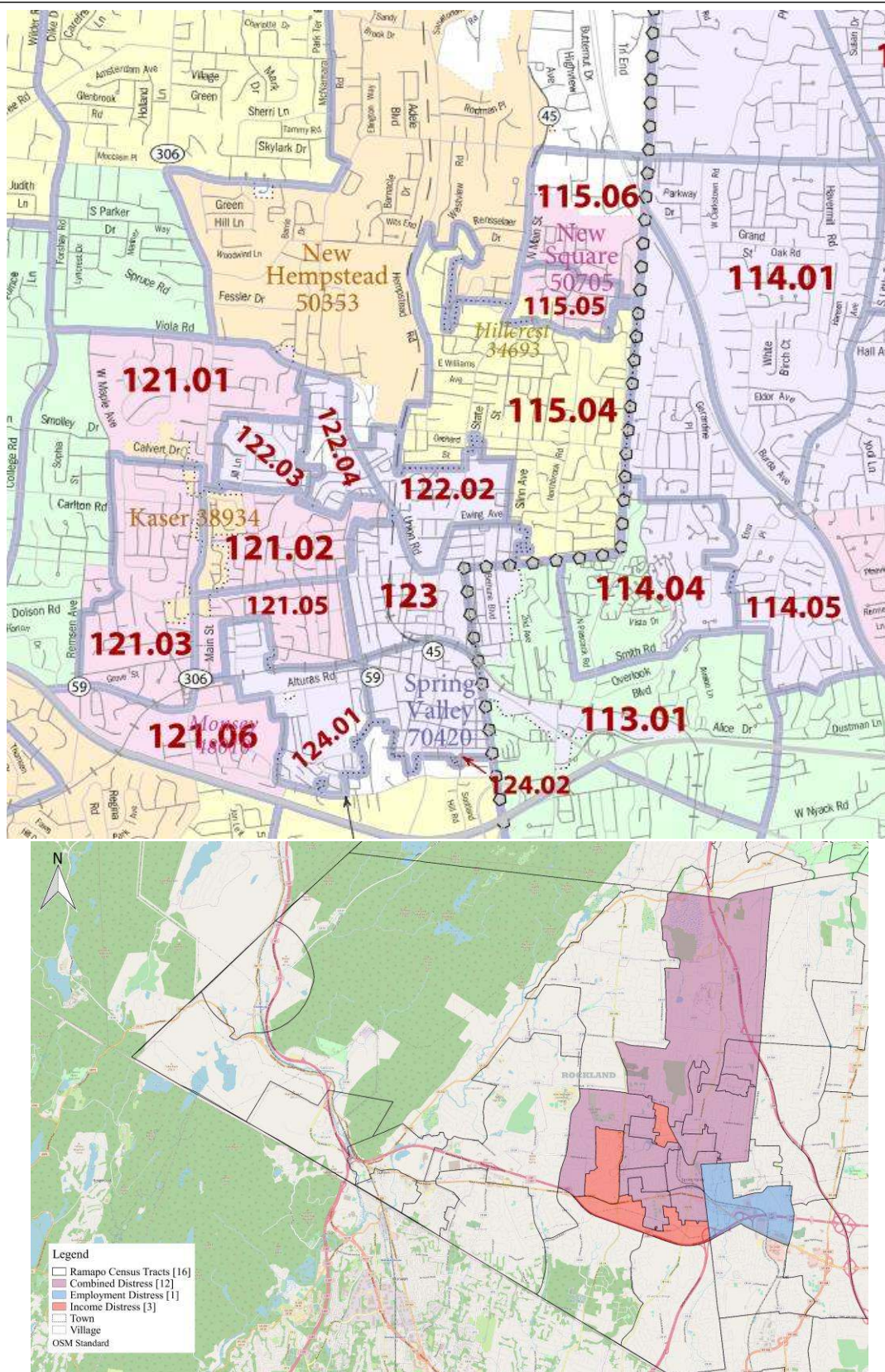


Figure 12: SPRING VALLEY ECONOMICALLY DISTRESSED CENSUS TRACTS

## Village of Haverstraw

The Village of Haverstraw's two census tracts show combined distress in 2015. The census tract north of the Village (106.02), in the Town is also distressed and is included. The unemployment rate was 2.5 points greater than the U.S. average, and has a PCMI of 80 percent. Since the last report, tract 107.01's unemployment rate increased to 12.2 percent and its PCMI stayed the same. The tract in the Town's income has decline, but unemployment has improved from 14.6 in 2013.

Economic Distress Criteria—Primary Elements				
	Haverstraw	U.S.	Threshold Calculations	
2015 Unemployment Rate (5-Year ACS)	10.2	8.3	2.5	
2015 Per Capita Money Income (5-Year ACS)	\$23,167	\$28,930	80.08%	
Economic Distress Criteria—Geographic Components				
Census Tracts	Unemp. Rate 2015 ACS	Threshold Calculation	PCMI 2015 ACS	Threshold Calculation
Tract 0106.02Rockland	9.5	1.2	\$23,493	81.2
Tract 0107.01Rockland	12.2	3.9	\$27,563	95.3
Tract 0107.02Rockland	10.7	2.4	\$17,637	61

Reference Date: All data is from Census ACS Estimates

Region Consists of: 36087010701, 36087010602, 36087010702

Report Date: 10/12/2017 5:55:42 PM



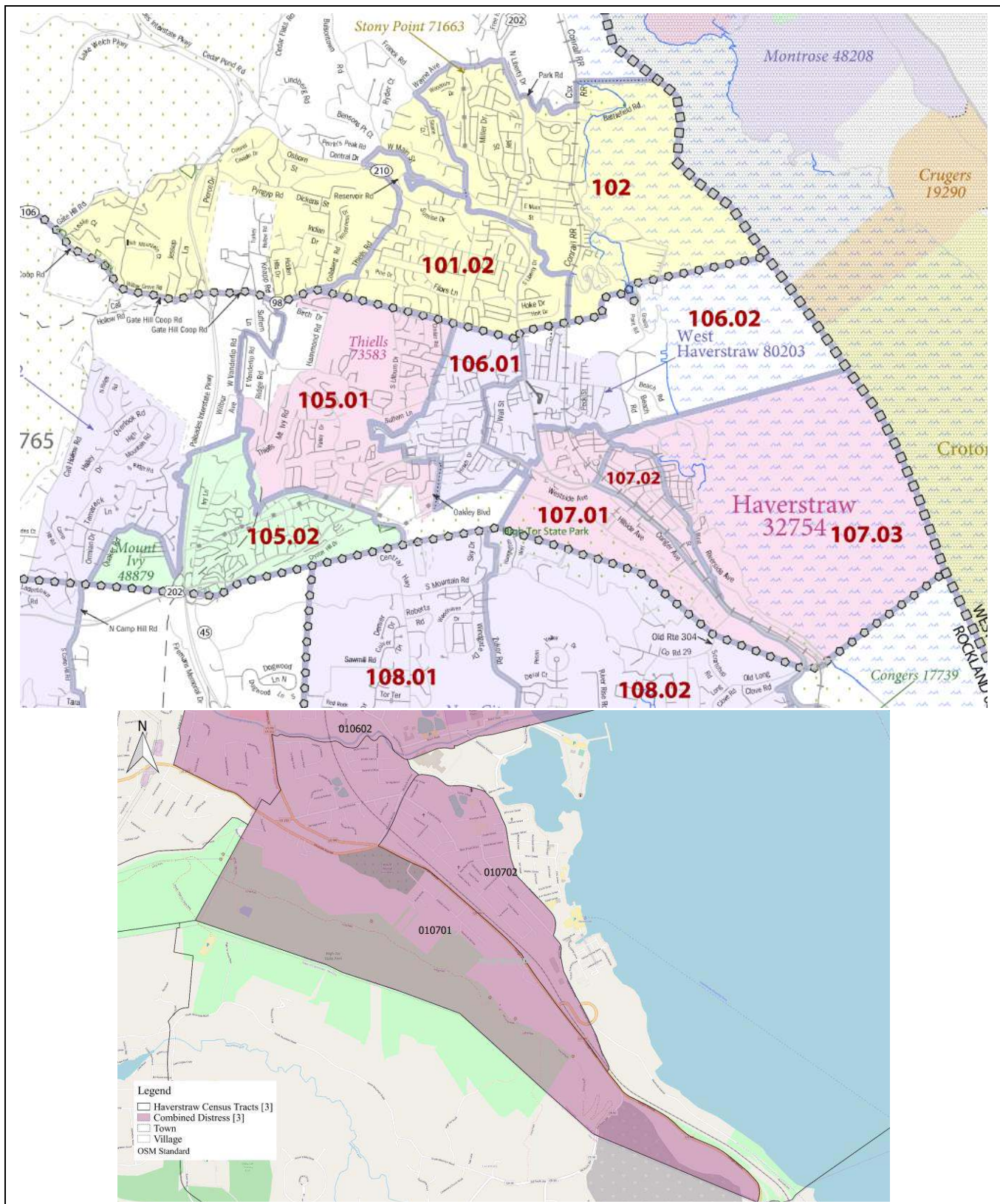
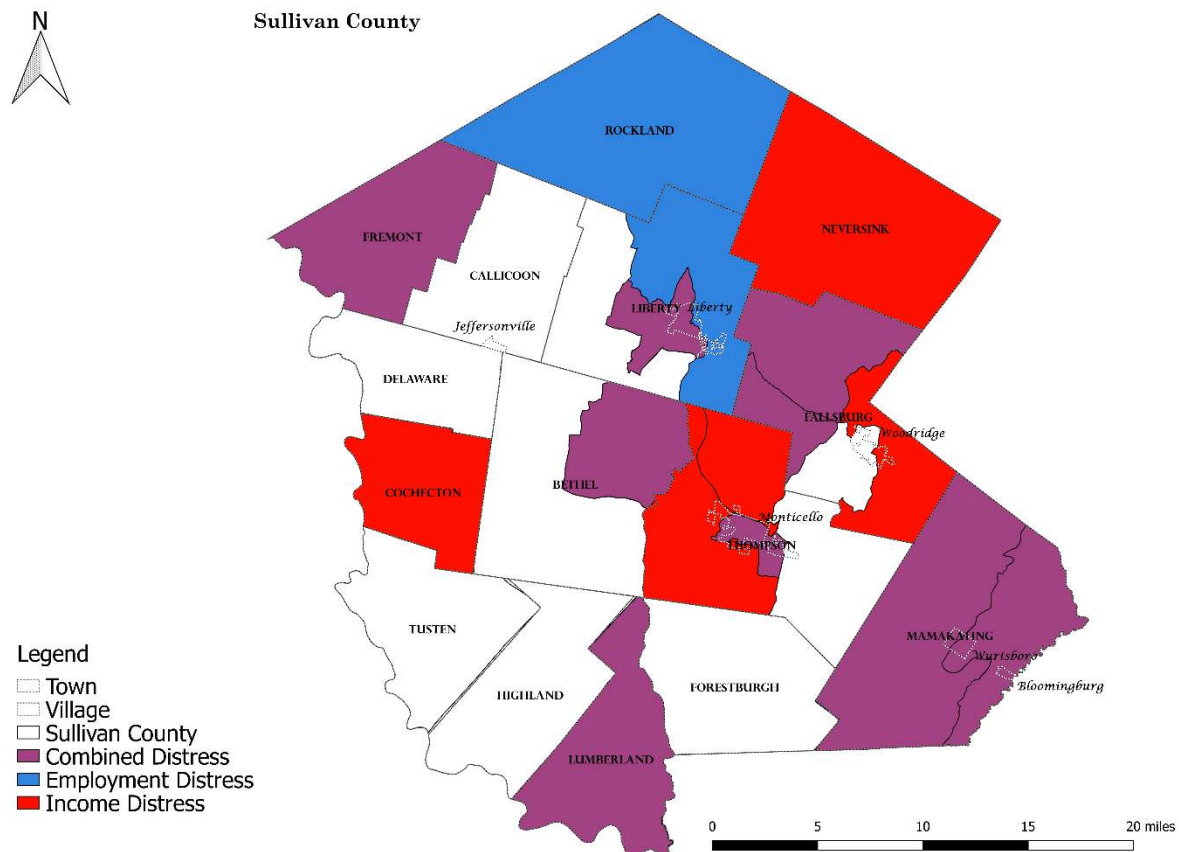


Figure 13: VILLAGE of HAVERSTRAW ECONOMICALLY DISTRESSED CENSUS TRACTS

## F: SULLIVAN COUNTY

Sullivan County has recovered from being economically distressed to only exhibiting lower than average income. As of August 2017, the 24-month average unemployment rate (BLS) shows an unemployment rate the same as the U.S. average and a 2015 PCMI below 90 percent. Twelve census tracts have unemployment rates in the double digits with the highest unemployment located in the northeastern part of the Town of Bethel, followed by Villages of Monticello and Liberty.



**Figure 14: SULLIVAN COUNTY ECONOMIC DISTRESS**

**Table 18: DISTRESS CRITERIA STATISTICAL REPORT-SULLIVAN COUNTY**

Source: U.S. Census Bureau American Community Survey; Calculations generated by StatsAmerica.

Distress Criteria Statistical Report			
Economic Distress Criteria—Primary Elements	Sullivan County	U.S.	Threshold Calculations
24-month Average Unemployment Rate (BLS) period ending August 2017	4.77	4.78	-0.01
2015 Per Capita Money Income (5-year ACS)	\$25,742	\$28,930	88.98%
2015 Per Capita Personal Income (BEA)	\$42,053	\$48,112	87.41%
2000 Per Capita Money Income (Decennial Census)	\$18,892	\$21,587	87.52%

Reference Date: 7 / 2017 (All data elements refer to this date or earlier.)

Region Consists of: Sullivan Co. NY

Report Date: 9/22/2017 3:15:04 PM

**Table 19: DISTRESS CRITERIA STATISTICAL REPORT-by CENSUS TRACT SULLIVAN COUNTY**

Economic Distress Criteria—Primary Elements				
	Sullivan County	U.S.	Threshold Calculations	
2015 Unemployment Rate (5-Year ACS)	14.6	8.3	6.3	
2015 Per Capita Money Income (5-Year ACS)	\$22,026	\$28,930	76.14%	
Economic Distress Criteria—Geographic Components				
Census Tracts	Unemp. Rate 2015 ACS	Threshold Calculation	PCMI 2015 ACS	Threshold Calculation
Tract 9503.00 Sullivan, NY	11.3	3	\$25,981	89.8
Tract 9507.00 Sullivan, NY	14.8	6.5	\$20,353	70.4
Tract 9508.00 Sullivan, NY	17.0	8.7	\$17,567	60.7
Tract 9509.00 Sullivan, NY	15.4	7.1	\$15,333	53
Tract 9512.00 Sullivan, NY	12.6	4.3	\$25,935	89.6
Tract 9513.00 Sullivan, NY	13.1	4.8	\$26,187	90.5
Tract 9515.00 Sullivan, NY	8.9	0.6	\$22,148	76.6
Tract 9518.00 Sullivan, NY	16.5	8.2	\$18,040	62.4
Tract 9519.00 Sullivan, NY	28.2	19.9	\$21,793	75.3
Tract 9522.00 Sullivan, NY	9.1	0.8	\$27,975	96.7
Tract 9525.00 Sullivan, NY	12.8	4.5	\$28,161	97.3

Reference Date: All data is from Census ACS Estimates

Region Consists of: 36105951800, 36105952500, 36105951900, 36105950800, 36105951300, 36105951200, 36105950300, 36105950700, 36105950900, 36105951500, 36105952200

Report Date: 10/12/2017 6:42:12 PM

Tracts 9504 and 9510 are no longer distressed. Tract 9510 recovered from its 2013 unemployment and income thresholds of 8.1 and 94.8 respectively to 0.3 and 103.1 respectively. Some distressed tracts only became more distressed with the largest increase in unemployment being in tract 9508.00 where unemployment rose 1.8 points from 2013 to 2015.

### Village and Town of Liberty

The Town of Liberty has three census tracts; two of which exhibit distress. In 2015, unemployment was more than 5.5 points above the national unemployment rate. Census tract 9505.00, north of the Village has improved from 2013, with a reduction in its unemployment rate of 6 points and its PCMI rising sufficiently to no longer consider it distress. Unfortunately, the other census tract which encompasses most of the Village, is in even more distress with both unemployment increasing 1.2 points and income dropping to 70% of the national PCMI. Overall for both tracts, PCMI is at approximately 85 percent of the national average.

**Table 20: DISTRESS CRITERIA STATISTICAL REPORT- LIBERTY, SULLIVAN COUNTY**

Economic Distress Criteria—Primary Elements				
	Liberty	U.S.	Threshold Calculations	
2015 Unemployment Rate (5-Year ACS)	13.8	8.3	5.5	
2015 Per Capita Money Income (5-Year ACS)	\$24,363	\$28,930	84.21%	
Economic Distress Criteria—Geographic Components				
Census Tracts	Unemp. Rate 2015 ACS	Threshold Calculation	PCMI 2015 ACS	Threshold Calculation
Tract 9505.00 Sullivan, NY	18.1	8.4	\$26,147	92.9
Tract 9507.00 Sullivan, NY	13.6	3.9	\$22,329	79.3

Source: U.S. Census Bureau American Community Survey; Calculations generated by StatsAmerica.

Distress Criteria Statistical Report -Liberty

Reference Date: All data are from the 2008-2012 Census ACS estimates

Region Consists of: 36105950500, 36105950700

Report Date: 3/13/2015 12:44



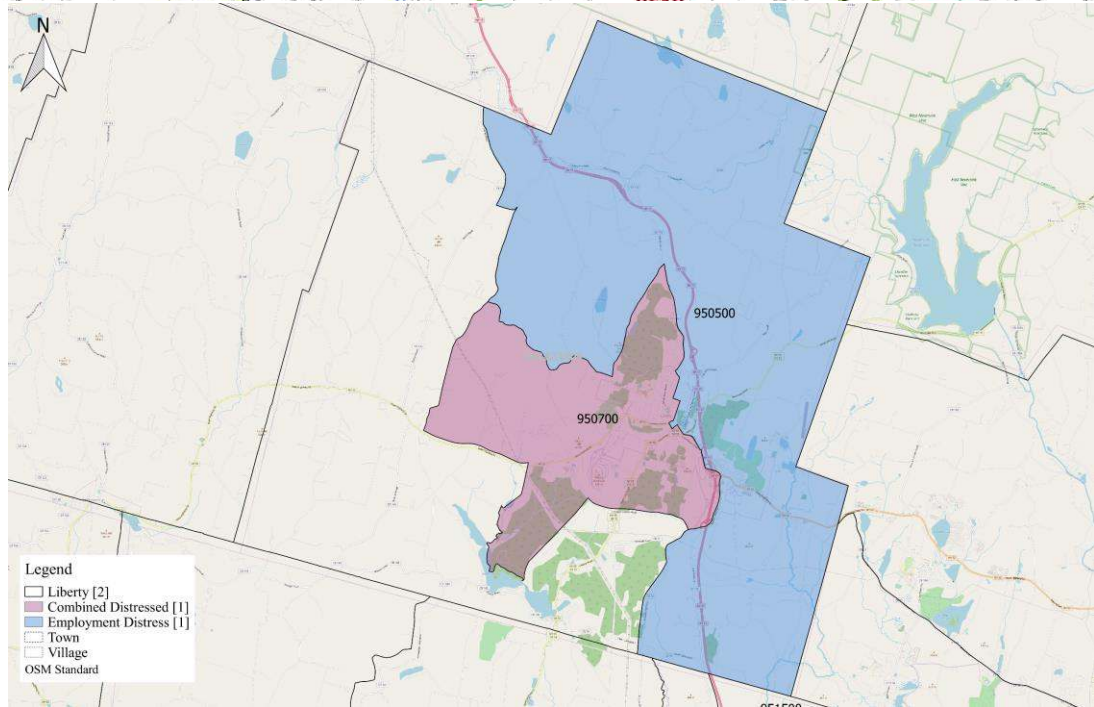
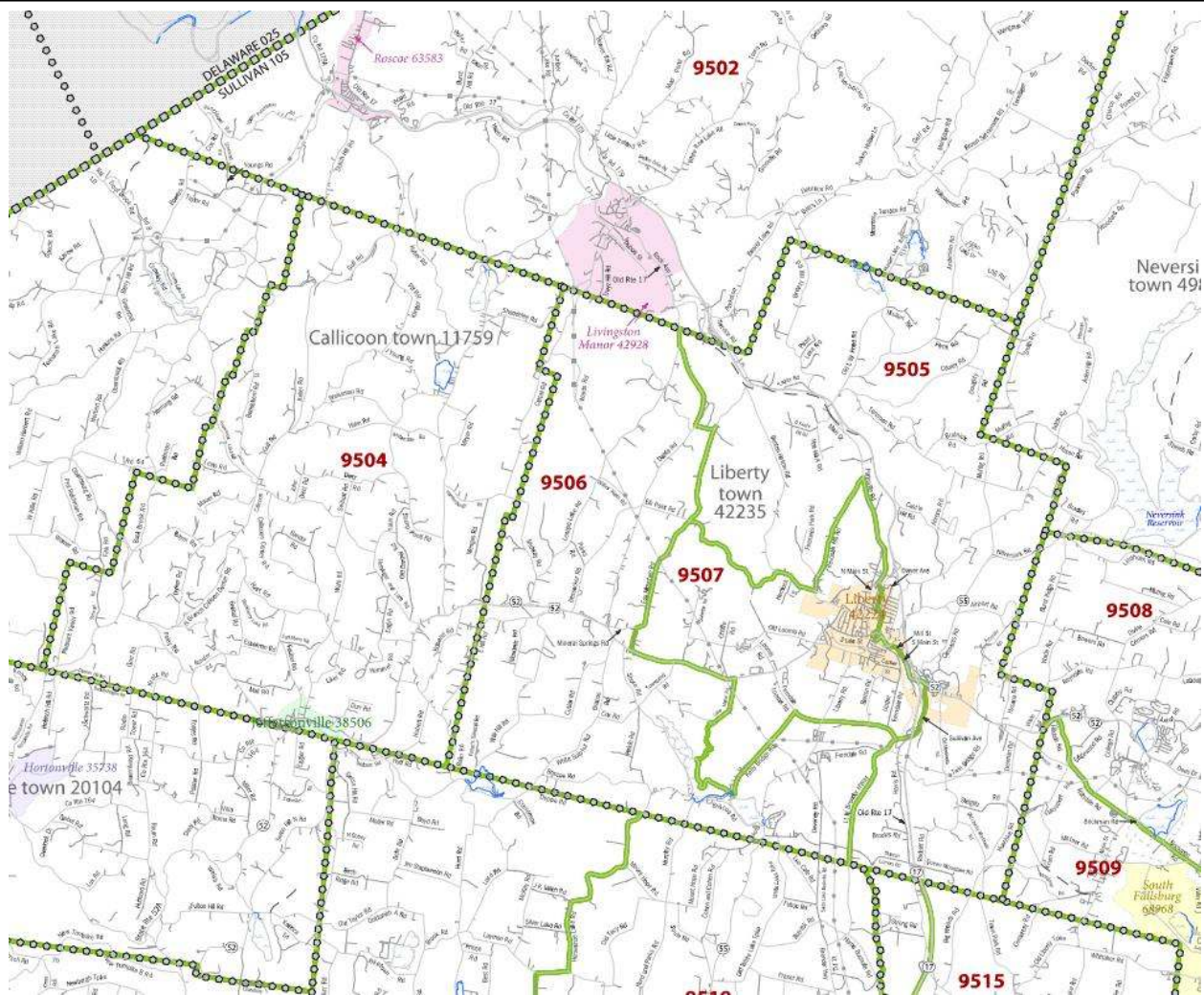


Figure 15: TOWN OF LIBERTY ECONOMICALLY DISTRESSED CENSUS TRACTS

## Town of Thompson/Village of Monticello

The Village of Monticello has one census tract, 9518, within its borders. While the tract shows significant unemployment at 8.2 points greater than the U.S. average, this is an improvement over the 2013 unemployment rate of 20.1%. The 2015 PCMI was 62.4%, which is an improvement over 2013's 53.8%. Of the two other census tracts in the Town of Thompson, 9515, north of the Village of Monticello recovered from being distressed to being only income distressed. The other tract is also income distressed.

**Table 21: DISTRESS CRITERIA STATISTICAL REPORT-MONTICELLO, SULLIVAN COUNTY**

Economic Distress Criteria—Primary Elements				
	Monticello	U.S.	Threshold Calculations	
2015 Unemployment Rate (5-Year ACS)	14.4	8.3	6.1	
2015 Per Capita Money Income (5-Year ACS)	\$19,249	\$28,930	66.54%	
Economic Distress Criteria—Geographic Components				
Census Tracts	Unemp. Rate 2015 ACS	Threshold Calculation	PCMI 2015 ACS	Threshold Calculation
Tract 9515.00 Sullivan, NY	8.9	0.6	\$22,148	76.6
Tract 9518.00 Sullivan, NY	16.5	8.2	\$18,040	62.4

Reference Date: All data is from Census ACS Estimates

Region Consists of: 36105951800, 36105951500

Report Date: 10/12/2017 10:01:05 PM

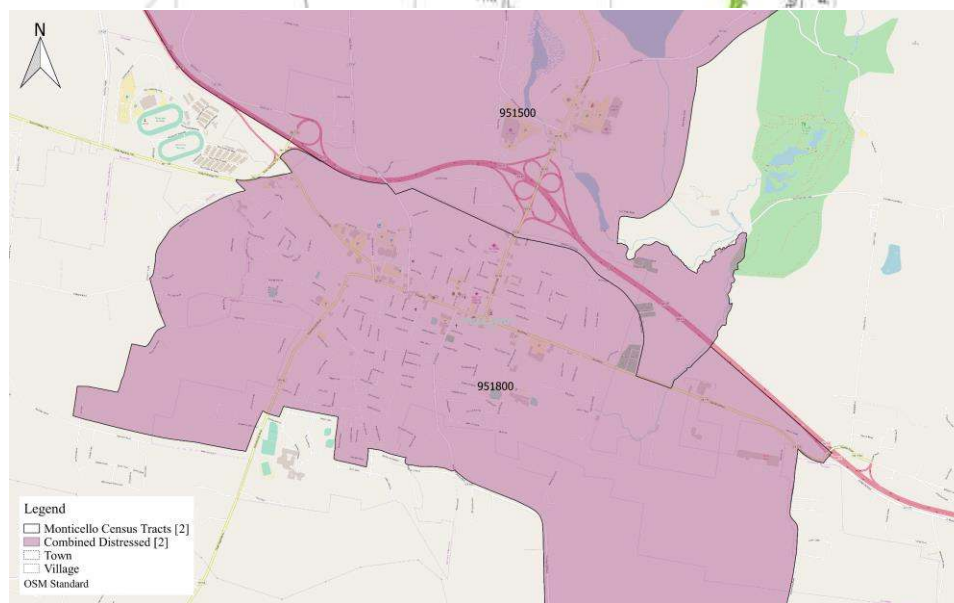
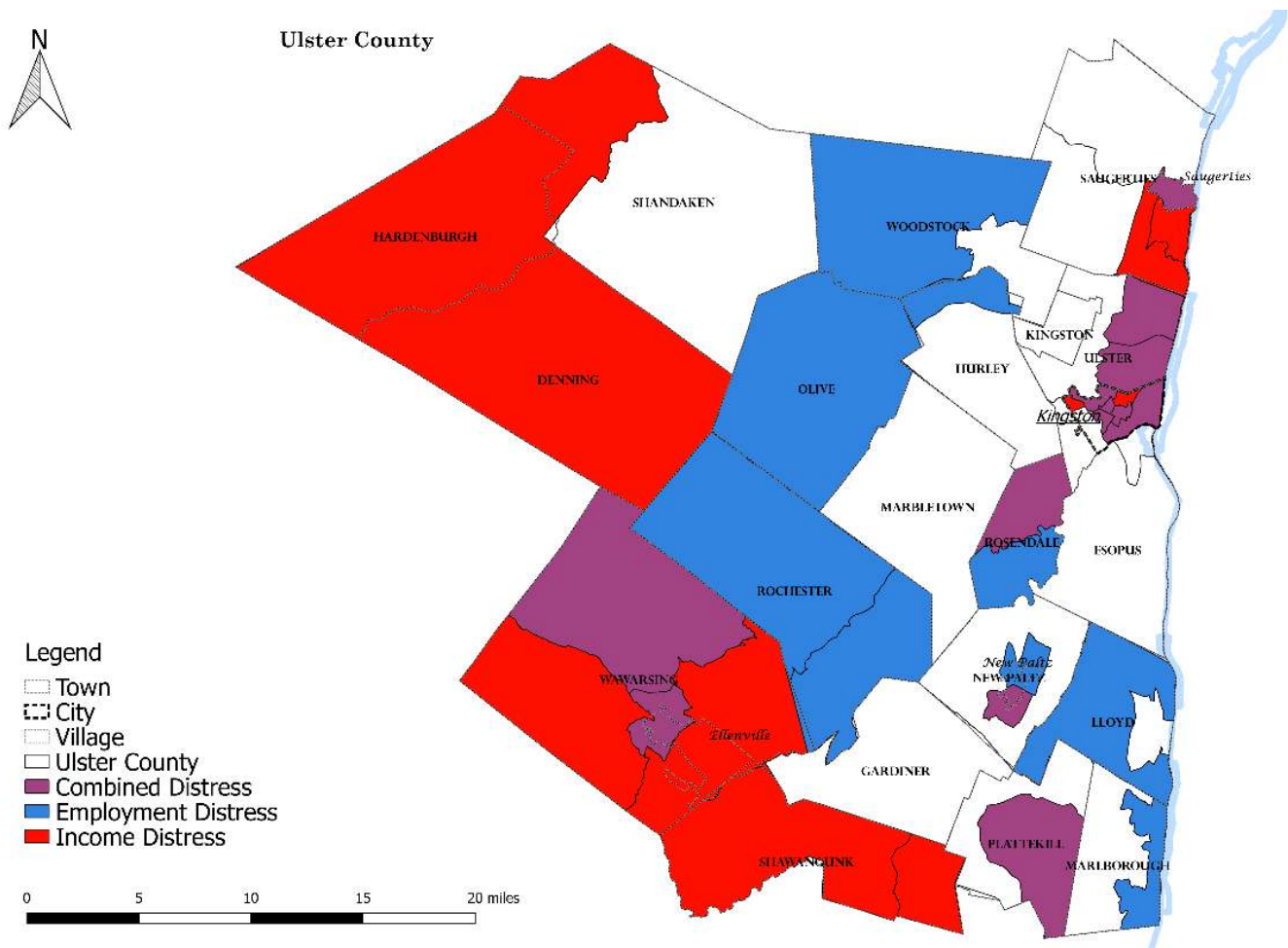


Figure 16: MONTICELLO ECONOMICALLY DISTRESSED CENSUS TRACTS



## G: ULSTER COUNTY

Ulster County shows both average unemployment and personal income. The data paints a mixed picture, with the Bureau of Economic Analysis calculating income at slightly below average, but the Census Bureau calculating income at somewhat above the national average. Tracts that show both distress indicators are concentrated around the urban center of Kingston, as well as the more rural areas of Ellenville and Plattekill-Modena. Since 2013, there are new areas experiencing combined distress including the Village of Saugerties, many more tracts in the Town of Ulster, one tract in Rosendale and the southern tract in the Village of New Paltz. Many more communities are also showing one form of distress with all towns on the western border with Sullivan showing income distress except for Wawarsing's northern tract which has both income and economic distress. The Towns of Woodstock, Olive and Lloyd are now income distressed. The towns to show improvement are: Esopus, western Town of Ulster, western Saugerties and eastern Woodstock.



**Figure 17: ULSTER COUNTY ECONOMIC DISTRESS**

**Table 22: DISTRESS CRITERIA STATISTICAL REPORT-ULSTER COUNTY**

Economic Distress Criteria—Primary Elements			
	Ulster County	U.S.	Threshold Calculation
24-month Average Unemployment Rate (BLS) period ending August 2017	4.43	4.76	-0.33
2015 Per Capita Money Income (5-year ACS)	\$30,732	\$28,930	106.23%
2015 Per Capita Personal Income (BEA)	\$44,422	\$48,112	92.33%
2000 Per Capita Money Income (Decennial Census)	\$20,846	\$21,587	96.57%

Reference Date: 08 / 2017 (All data elements refer to this date or earlier.)

Region Consists of: Ulster Co. NY

Report Date: 9/27/2017 4:03:51PM

## City of Kingston

The City of Kingston is composed of 8 census tracts with only one tract not showing any kind of distress. The seven tracts are all income distressed with only two showing no employment distress. The City of Kingston exhibits both employment and income distress in five census tracts, as exhibited in Table 20. This is an increase of one census tract since 2013. For the five census tracts combined the unemployment rate is 4 points greater than the national average.

Per capita income across the five tracts is three-quarters of the national average. Two census tracts in the city exhibit even lower income. The most income and employment distressed tract, 9521, has seen an increase in unemployment since 2013 increasing from 13.7 to 16.1 percent. Overall the City of Kingston's distressed tracts have not kept pace with the recovery and are worse off than they were in 2013.

**Table 23: DISTRESS CRITERIA STATISTICAL REPORT-CITY of KINGSTON, ULSTER COUNTY**

Economic Distress Criteria—Primary Elements				
	City of Kingston	U.S.	Threshold Calculations	
2015 Unemployment Rate (5-Year ACS)	12.4	8.3	4.1	
2015 Per Capita Money Income (5-Year ACS)	\$21,937	\$28,930	75.83%	
Economic Distress Criteria—Geographic Components				
Census Tracts	Unemp. Rate 2015 ACS	Threshold Calculation	PCMI 2015 ACS	Threshold Calculation
Tract 9517.00 Ulster, NY	11.0	2.7	\$22,701	78.5
Tract 9519.00 Ulster, NY	12.7	4.4	\$23,386	80.8
Tract 9520.00 Ulster, NY	10.7	2.4	\$20,822	72
Tract 9521.00 Ulster, NY	16.1	7.8	\$18,018	62.3
Tract 9524.00 Ulster, NY	11.6	3.3	\$25,491	88.1

Reference Date: All data is from Census ACS Estimates

Region Consists of: 36111951700, 36111951900, 36111952000, 36111952100, 36111952400

Report Date: 9/28/2017 3:41:24 PM



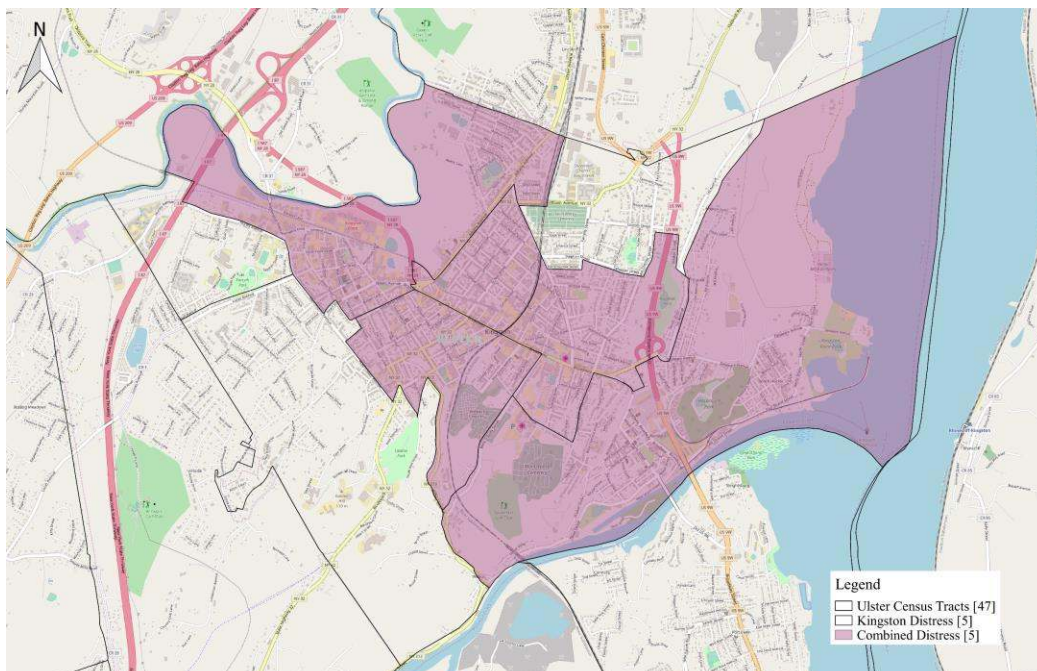
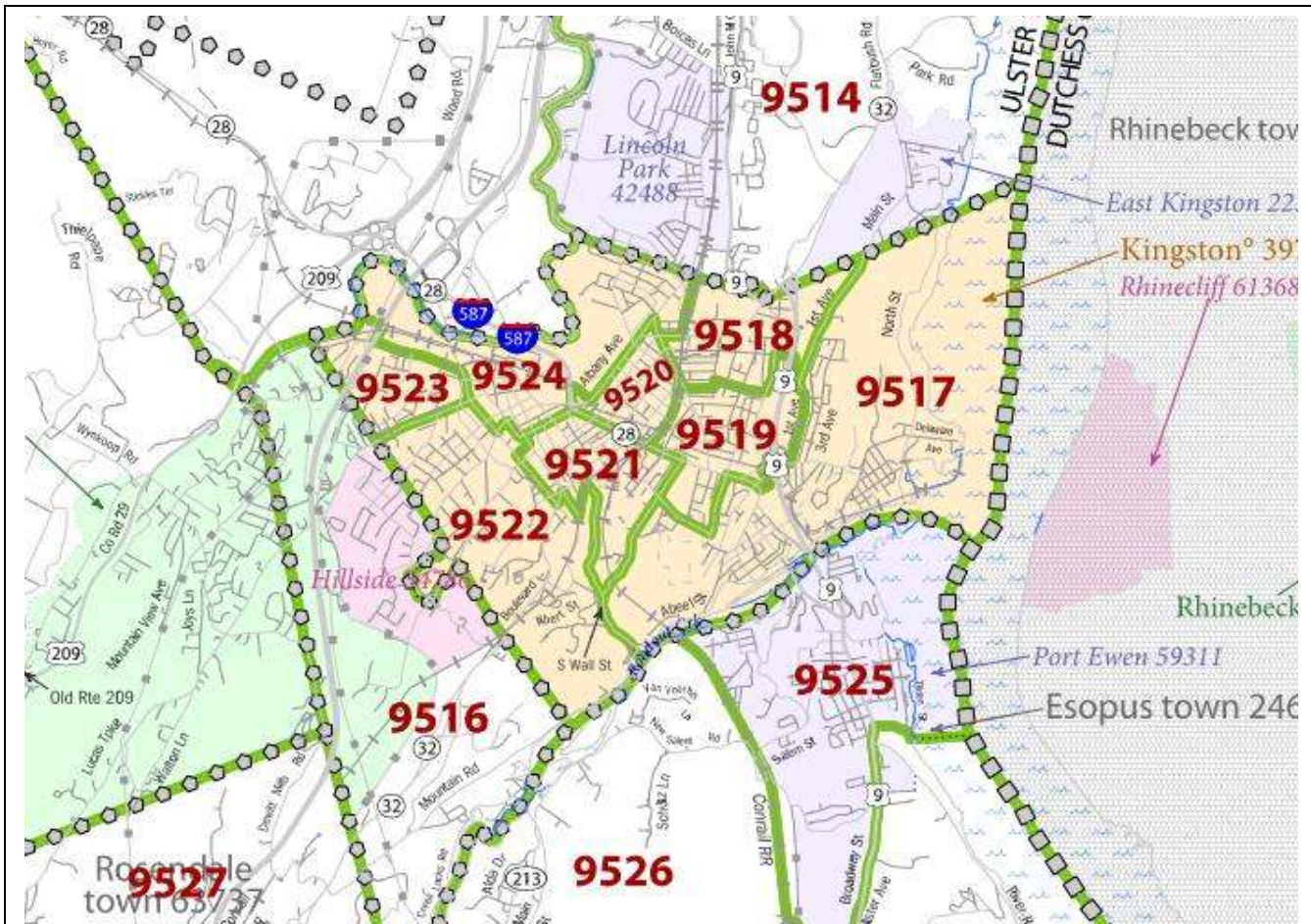


Figure 18: CITY OF KINGSTON ECONOMICALLY DISTRESSED CENSUS TRACTS

## City of Kingston Area

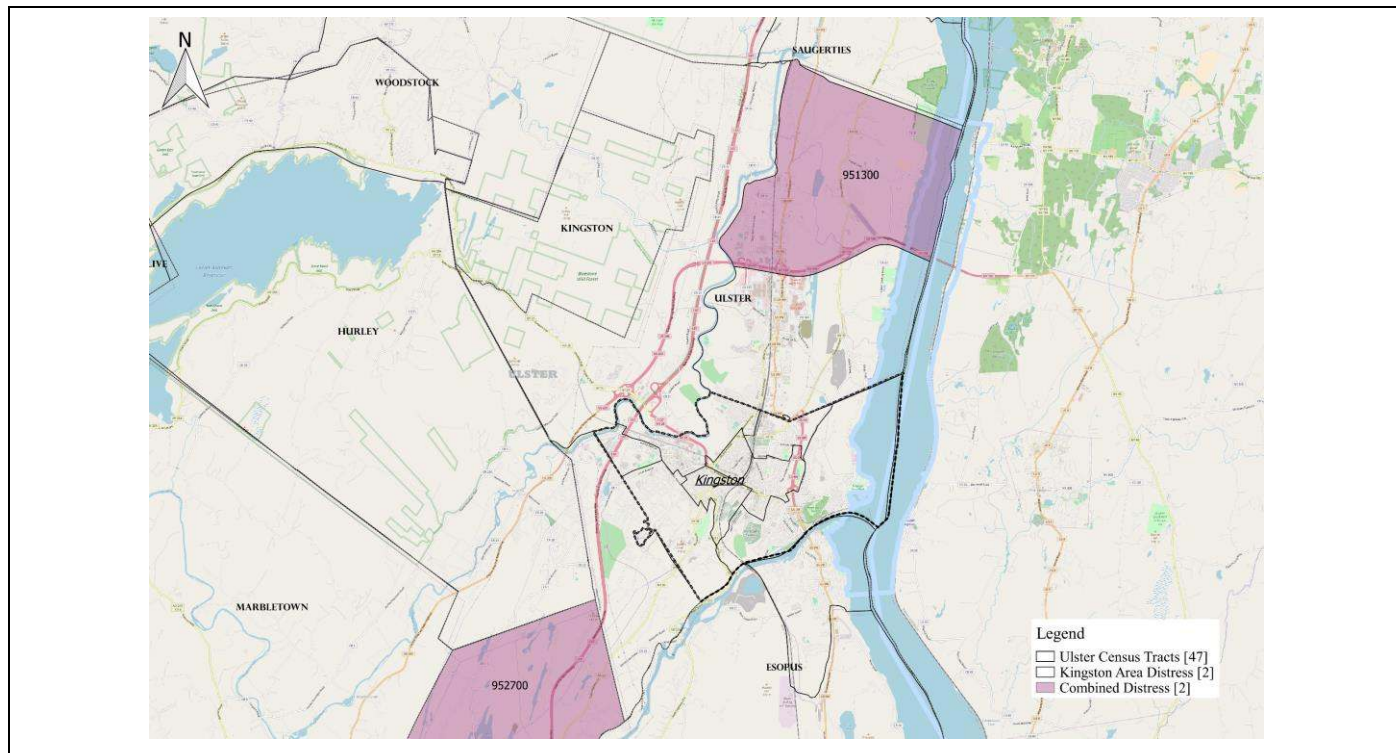
Outside of the City's boundaries there are distressed tracts to the north in the Town of Ulster and south in the Town of Rosendale.

Economic Distress Criteria—Primary Elements				
	City of Kingston Area	U.S.	Threshold Calculations	
2015 Unemployment Rate (5-Year ACS)	13.2	8.3	4.9	
2015 Per Capita Money Income (5-Year ACS)	\$25,683	\$28,930	88.78%	
Economic Distress Criteria—Geographic Components				
Census Tracts	Unemp. Rate 2015 ACS	Threshold Calculation	PCMI 2015 ACS	Threshold Calculation
Tract 9513.00 Ulster, NY	16.1	7.8	\$27,232	94.1
Tract 9514.00 Ulster, NY	11.8	3.5	\$22,682	78.4
Tract 9527.00 Ulster, NY	10.7	2.4	\$26,951	93.2

Reference Date: All data is from Census ACS Estimates

Region Consists of: 36111951300, 36111951400, 36111952700

Report Date: 9/29/2017 12:38:20 PM



**Figure 19: CITY OF KINGSTON ECONOMICALLY DISTRESSED CENSUS TRACTS**



## Village of Ellenville

Ellenville in Ulster County also exhibits economic distress. Two census tracts, 945 and 948 intersect the Village of Ellenville. All the census tracts in Town of Wawarsing, which encompasses the Village, experience at least one form of distress.

The Ellenville area has unemployment rates as high as 6.4 points over the national average and income at three quarters of the national PCMI.

**Table 24: DISTRESS CRITERIA STATISTICAL REPORT-ELLENVILLE, ULSTER COUNTY**

Economic Distress Criteria—Primary Elements				
	Ellenville	U.S.	Threshold Calculations	
2015 Unemployment Rate (5-Year ACS)	13.8	8.3	5.5	
2015 Per Capita Money Income (5-Year ACS)	\$23,120	\$28,930	79.92%	
Economic Distress Criteria—Geographic Components				
Census Tracts	Unemp. Rate 2015 ACS	Threshold Calculation	PCMI 2015 ACS	Threshold Calculation
Tract 9546.00 Ulster, NY	14.7	6.4	\$26,091	90.2
Tract 9548.00 Ulster, NY	13.4	5.1	\$22,041	76.2

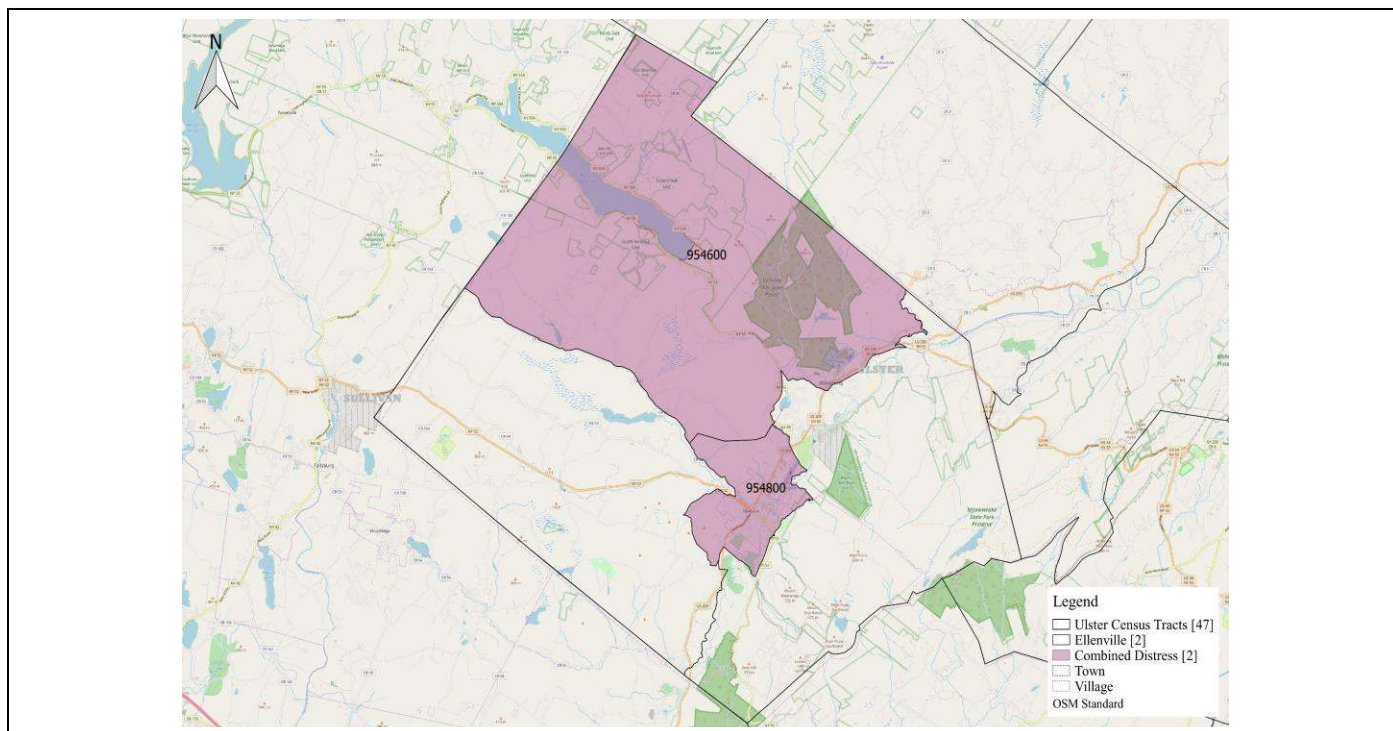
Sources: U.S. Bureau of Census, Labor Statistics, and Economic Analysis; Calculations generated by StatsAmerica.

Distress Criteria Statistical Report

Reference Date: All data is from Census ACS Estimates

Region Consists of: 36111954600, 36111954800

Report Date: 9/29/2017 4:30:30 PM



**Figure 20: ELLENVILLE DISTRESSED CENSUS TRACTS**

## ELLENVILLE AREA ECONOMICALLY DISTRESSED CENSUS TRACTS



**Village of Ellenville, NY**

### Town of Plattekill

Plattekill in Ulster County shows economic distress but has improved since 2013. In 2015, unemployment was 2.2 points above the national average and PCMI was 89 percent, improving from 2013's 4.5 and 85 percent respectively.

**Table 25: DISTRESS CRITERIA STATISTICAL REPORT-PLATTEKILL, ULSTER COUNTY**

Economic Distress Criteria—Geographic Components				
Census Tract	Unemp. Rate 2015 ACS	Threshold Calculation	PCMI 2015 ACS	Threshold Calculation
Tract 9541.00 Ulster, NY	10.5	2.2	\$25,802	89.2

Sources: U.S. Bureaus of Census, Labor Statistics, and Economic Analysis; Calculations generated by StatsAmerica.

Distress Criteria Statistical Report

Reference Date: All data is from Census ACS Estimates

Region Consists of: 36111954100

Report Date: 9/29/2017 4:34:23 PM



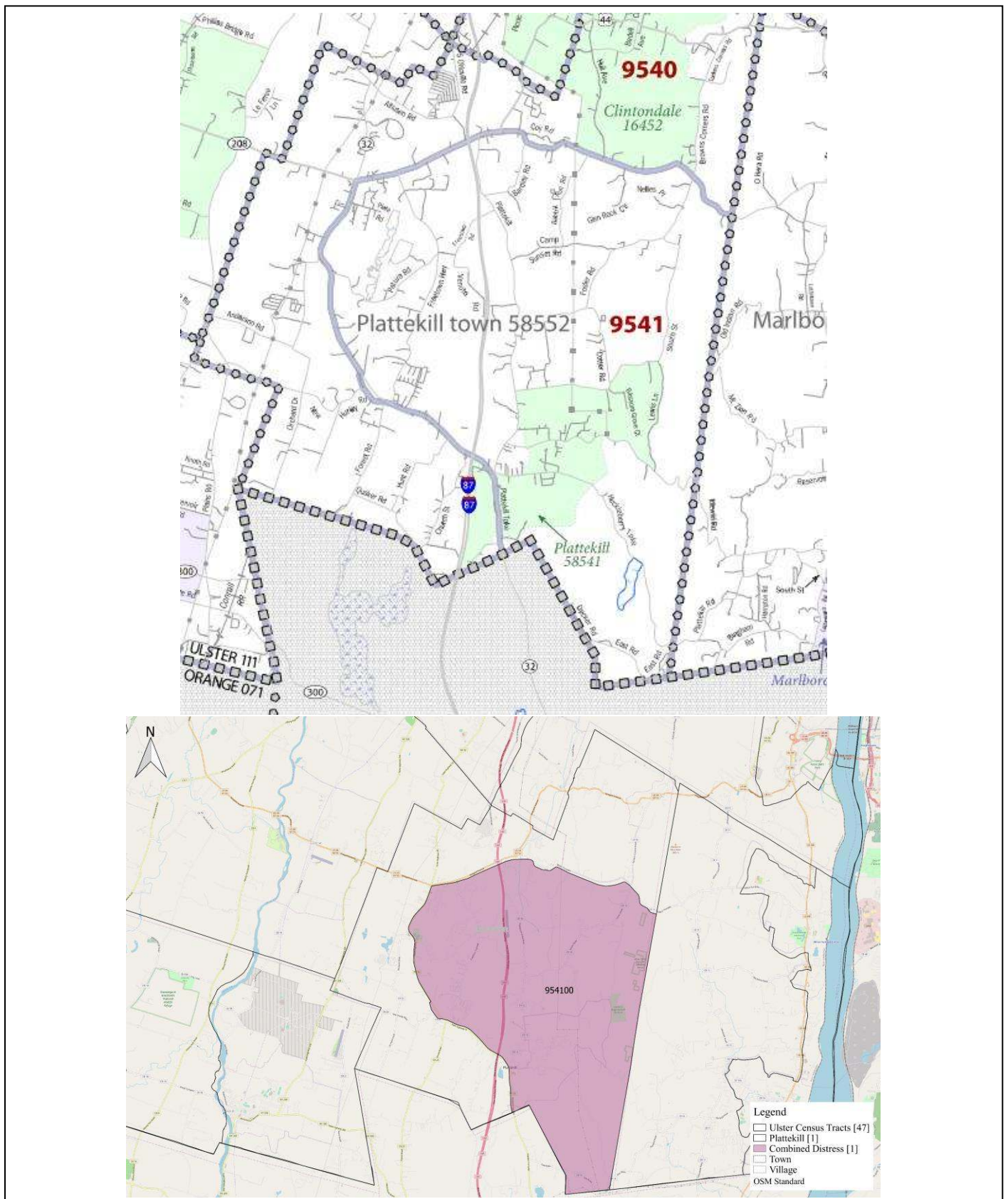


Figure 20: TOWN of PLATTEKILL ECONOMICALLY DISTRESSED CENSUS TRACTS

## H: WESTCHESTER COUNTY

Westchester County does not show signs of economic distress, with employment rates and per capita income being significantly above national averages. Pockets of economic distress are concentrated around Mount Vernon, Peekskill, Yonkers, and Ossining.

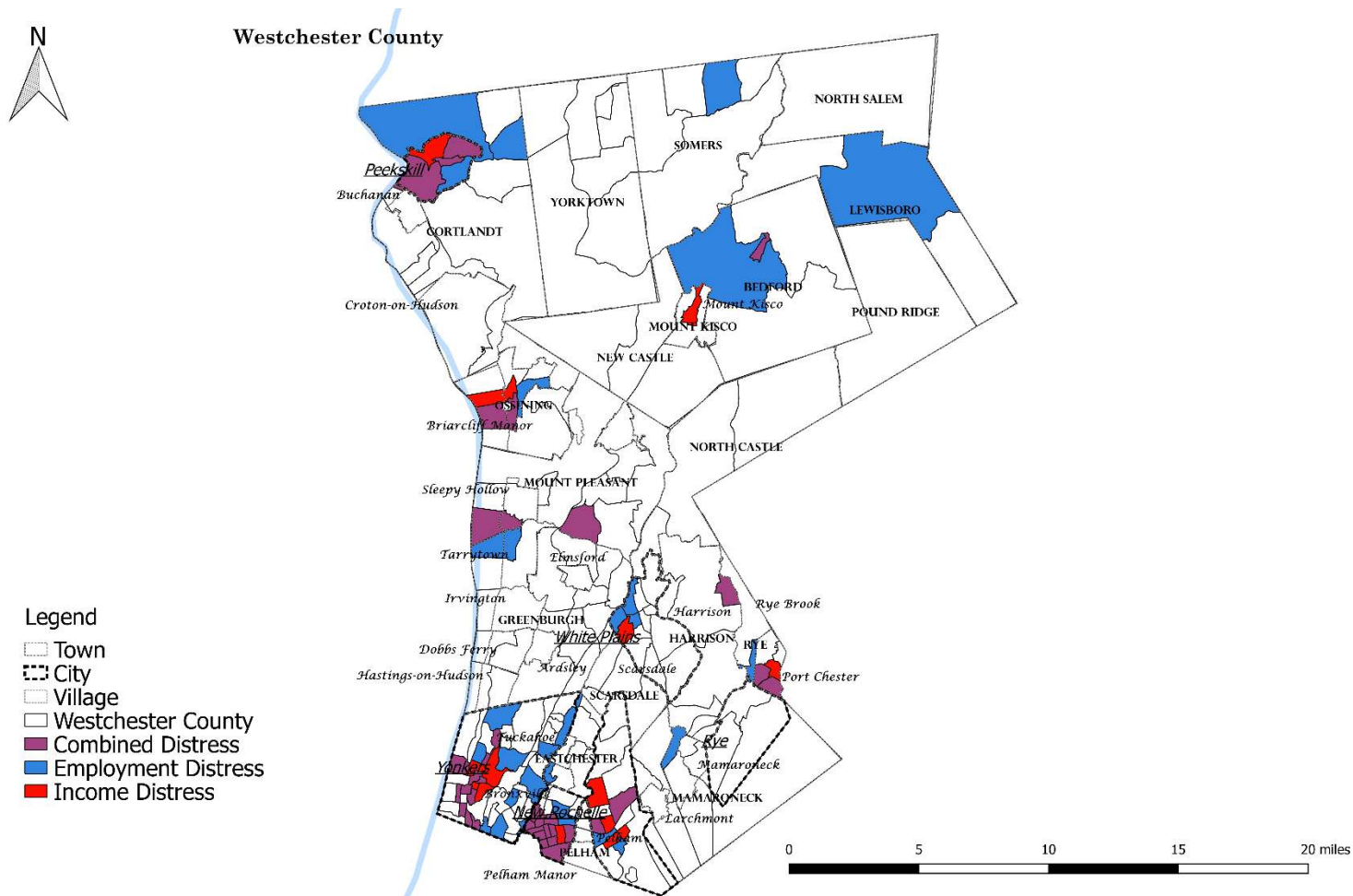


Figure 21: WESTCHESTER COUNTY ECONOMIC DISTRESS

Table 26: DISTRESS CRITERIA STATISTICAL REPORT-WESTCHESTER COUNTY

Economic Distress Criteria—Primary Elements			
	Westchester County	U.S.	Threshold Calculations
24-month Average Unemployment Rate (BLS) period ending August 2017	4.28	4.76	-0.48
2015 Per Capita Money Income (5-year ACS)	\$48,885	\$28,930	168.98%
2015 Per Capita Personal Income (BEA)	\$93,229	\$48,112	193.78%
2000 Per Capita Money Income (Decennial Census)	\$36,726	\$21,587	170.13%

Sources: U.S. Bureau of Census, Labor Statistics, and Economic Analysis; Calculations generated by StatsAmerica.

Reference Date: 08 / 2017 (All data elements refer to this date or earlier.)

Region Consists of: Westchester Co. NY

Report Date: 10/5/2017 10:09:11 AM



## City of Mount Vernon

Mount Vernon exhibits significant economic distress. The average unemployment rate of the census tracts examined have an unemployment rate that is 6 points higher than the U.S. average and a PCMI well below 80 percent of the U.S. average. Of the tracts in the last report, the PCMI declined from 2013 to 2015. Three census tracts have an unemployment rate that is well over 10 points above the national average and two have unemployment rates of 20 percent. Per capita income is as low as 41.3 percent of the U.S. average. Most notably three census tracts (0030.00, 0034.00, 0040.00) from the last report have slid deeper into distress as both the unemployment rate increased and incomes decreased for these tracts. Overall the number of census tracts experiencing severe unemployment has been reduced from five in 2013 census tracts with unemployment rates over 20 percent, to two in 2015.

**Table 27: DISTRESS CRITERIA STATISTICAL REPORT-MOUNT VERNON, WESCHESTER COUNTY**

	Mount Vernon	U.S.	Threshold Calculations	
2015 Unemployment Rate (5-Year ACS)	14.3	8.3	6	
2015 Per Capita Money Income (5-Year ACS)	\$21,228	\$28,930	73.38%	
Economic Distress Criteria—Geographic Components				
Census Tracts	Unemp. Rate 2015 ACS	Threshold Calculation	PCMI 2015 ACS	Threshold Calculation
Tract 0026.00 Westchester, NY	17.1	8.8	\$25,590	88.5
Tract 0027.00 Westchester, NY	13.6	5.3	\$19,459	67.3
Tract 0028.00 Westchester, NY	20.5	12.2	\$17,633	61
Tract 0029.00 Westchester, NY	18.0	9.7	\$20,018	69.2
Tract 0030.00 Westchester, NY	19.0	10.7	\$19,179	66.3
Tract 0031.00 Westchester, NY	20.9	12.6	\$11,952	41.3
Tract 0032.00 Westchester, NY	10.6	2.3	\$22,605	78.1
Tract 0033.00 Westchester, NY	8.5	0.2	\$21,234	73.4
Tract 0034.00 Westchester, NY	14.8	6.5	\$23,999	83
Tract 0035.00 Westchester, NY	15.5	7.2	\$19,197	66.4
Tract 0036.00 Westchester, NY	8.8	0.5	\$20,534	71
Tract 0037.00 Westchester, NY	10.5	2.2	\$24,433	84.5
Tract 0040.00 Westchester, NY	13.5	5.2	\$22,771	78.7

Source: U.S. Census Bureau American Community Survey; Calculations generated by StatsAmerica

Distress Criteria Statistical Report-Mt Vernon

Reference Date: All data is from Census ACS Estimates

Region Consists of: 36119002700, 36119002800, 36119002900, 36119003000, 36119003100, 36119003200, 36119003500, 36119003600, 36119003700, 36119004000, 36119002600, 36119003300, 36119003400

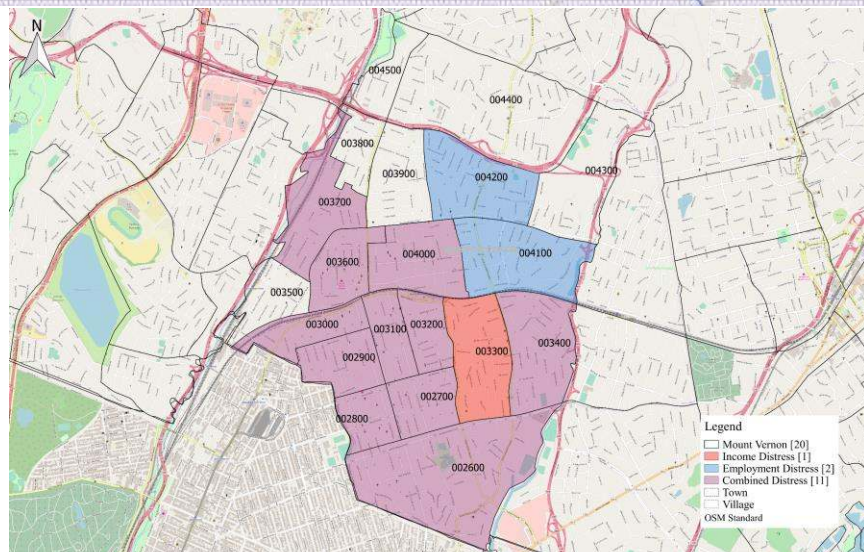
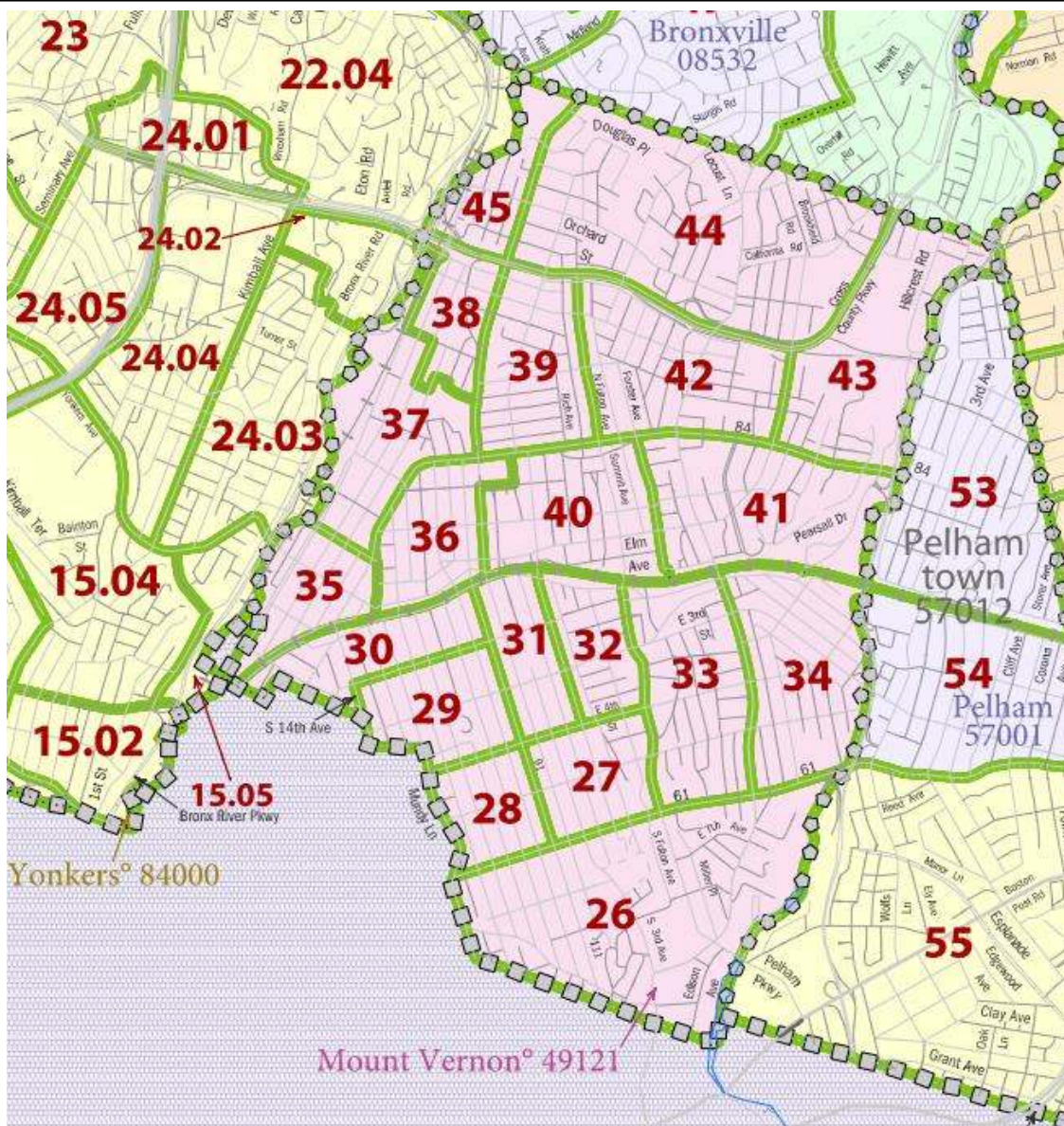


Figure 22: CITY OF MOUNT VERNON ECONOMICALLY DISTRESSED CENSUS TRACTS



## City of Yonkers

Yonkers has 52 census tracts, with 23 tracts showing at least one type of distress. In total, the distressed census tracts have an unemployment rate 3.2 points higher than the U.S. average and per capita income that is approximately 83 percent that of the national average. Yonkers' most unemployment distressed tract has an unemployment rate close to 9 points greater than the national average and 5 census tracts have unemployment rates over 5 points over the national average. Per capita income has not changed since the 2015 report and is as low as 40 percent of the U.S. average. Most census tracts have seen an improvement since the 2015 report except, three have lower incomes or have not changed (2.01, 3.00, 6.00), 2 where unemployment has increased (12.00, 13.03) and two where both indicators have worsened (10.00, 13.02). Eighteen census tracts have unemployment rates in the double digits.

**Table 28: DISTRESS CRITERIA STATISTICAL REPORT-CITY of YONKERS, WESCHESTER COUNTY**

Economic Distress Criteria—Primary Elements				
	Yonkers	U.S.	Threshold Calculations	
2015 Unemployment Rate (5-Year ACS)	11.5	8.3	3.2	
2015 Per Capita Money Income (5-Year ACS)	\$23,872	\$28,930	82.52%	
Economic Distress Criteria—Geographic Components				
Census Tracts	Unemp. Rate 2015 ACS	Threshold Calculation	PCMI 2015 ACS	Threshold Calculation
Tract 0002.01 Westchester, NY	12.7	4.4	\$17,800	61.5
Tract 0003.00 Westchester, NY	11.2	2.9	\$13,681	47.3
Tract 0005.00 Westchester, NY	12.5	4.2	\$13,538	46.8
Tract 0006.00 Westchester, NY	8.6	0.3	\$17,521	60.6
Tract 0010.00 Westchester, NY	14.7	6.4	\$12,408	42.9
Tract 0011.01 Westchester, NY	7.7	-0.6	\$11,716	40.5
Tract 0011.02 Westchester, NY	8.2	-0.1	\$20,189	69.8
Tract 0012.00 Westchester, NY	15.8	7.5	\$16,296	56.3
Tract 0013.02 Westchester, NY	14.0	5.7	\$20,270	70.1
Tract 0013.03 Westchester, NY	17.1	8.8	\$14,251	49.3
Tract 0017.00 Westchester, NY	10.2	1.9	\$30,049	103.9
Tract 0024.02 Westchester, NY	11.1	2.8	\$39,593	136.9
Tract 0015.03 Westchester, NY	10.8	2.5	\$31,095	107.5
Tract 0024.05 Westchester, NY	9.9	1.6	\$33,159	114.6
Tract 0008.02 Westchester, NY	15.5	7.2	\$22,808	78.8
Tract 0022.01 Westchester, NY	10.8	2.5	\$44,795	154.8
Tract 0009.00 Westchester, NY	12.0	3.7	\$31,300	108.2
Tract 0015.05 Westchester, NY	9.8	1.5	\$31,762	109.8
Tract 0021.03 Westchester, NY	11.1	2.8	\$55,053	190.3
Tract 0001.03 Westchester, NY	10.9	2.6	\$13,568	46.9
Tract 0008.03 Westchester, NY	10.4	2.1	\$31,219	107.9
Tract 0004.02 Westchester, NY	10.6	2.3	\$24,337	84.1
Tract 0014.03 Westchester, NY	10.8	2.5	\$29,360	101.5

Sources: U.S. Bureaus of Census, Labor Statistics, and Economic Analysis; Calculations generated by StatsAmerica

Distress Criteria Statistical Report

Reference Date: All data is from Census ACS Estimates

Region Consists of:

36119000201, 36119001302, 36119001303, 36119000103, 36119000300, 36119001200, 36119001101, 36119001102, 36119000402, 36119000600, 36119000500, 36119000802, 36119000803, 36119000900, 36119001700, 36119002103, 36119002201, 36119001503, 36119001403, 36119002405, 36119002402, 36119001505, 36119001000

Report Date: 10/10/2017 12:14:16 PM



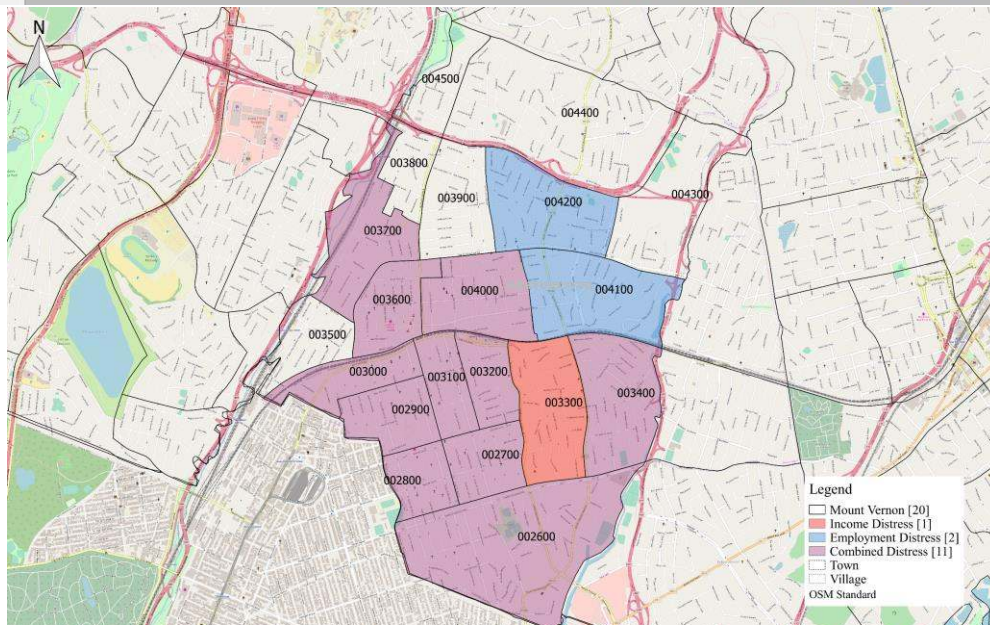
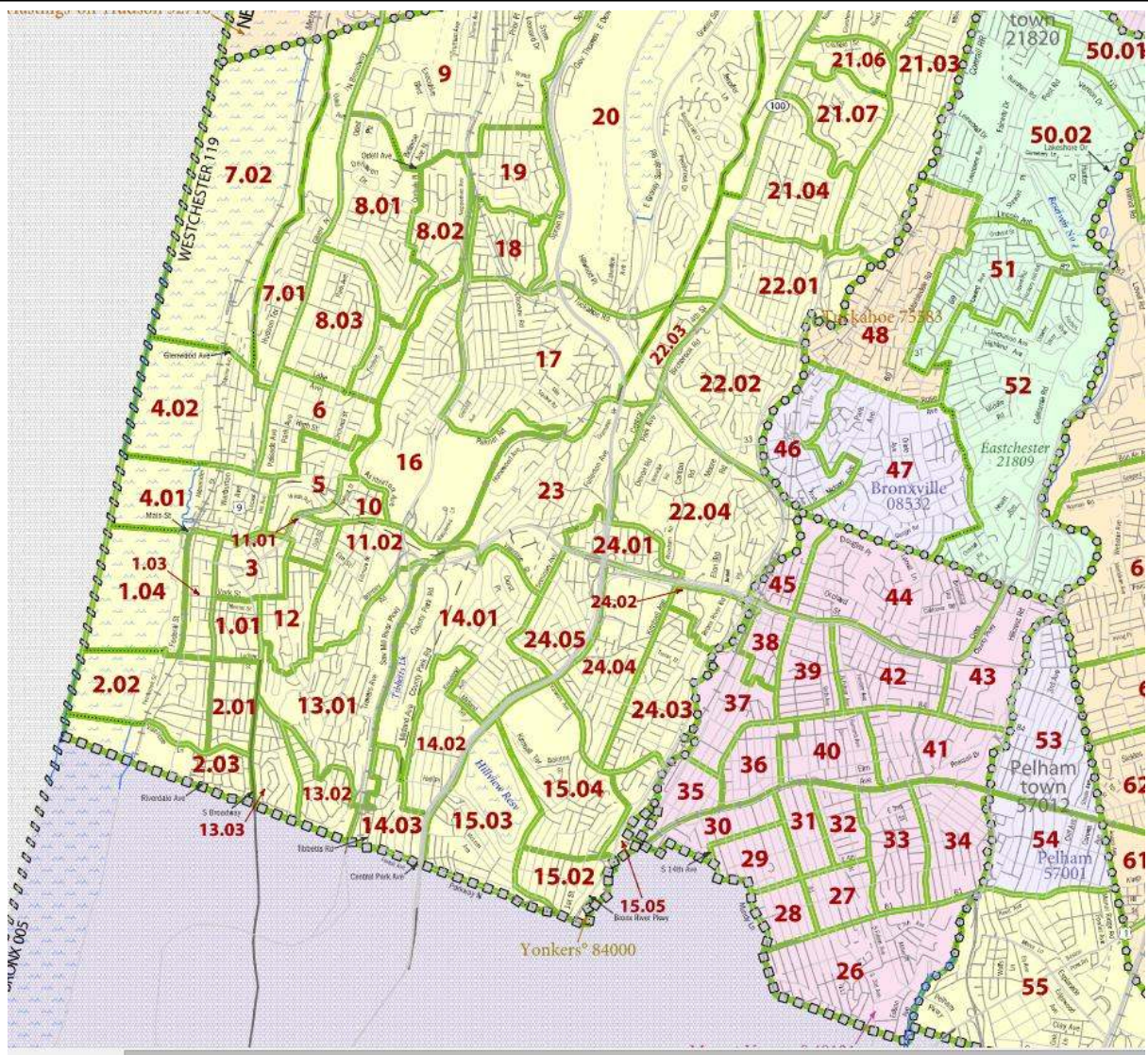


Figure 23: CITY of YONKERS ECONOMICALLY DISTRESSED CENSUS TRACTS

## City of Peekskill

Peekskill exhibits some economic distress. Only one of Peekskill's five census tracts, 142, does not meet unemployment distress criteria, but it does show income distress. Of the three census tracts that were in the 2015 report: one tract's unemployment numbers have improved declining from 10.1 to 7.5 (not shown) percent, one has remained the same and one, 143, has increased from 9.7 to 12.2.

**Table 29: DISTRESS CRITERIA STATISTICAL REPORT- PEEKSKILL, WESCHESTER COUNTY**

Economic Distress Criteria—Primary Elements				
	Peekskill	U.S.	Threshold Calculations	
2015 Unemployment Rate (5-Year ACS)	11.2	8.3	2.9	
2015 Per Capita Money Income (5-Year ACS)	\$24,176	\$28,930	83.57%	
Economic Distress Criteria—Geographic Components				
Census Tracts	Unemp. Rate 2015 ACS	Threshold Calculation	PCMI 2015 ACS	Threshold Calculation
Tract 0141.00 Westchester, NY	10.6	2.3	\$26,248	90.7
Tract 0143.00 Westchester, NY	12.2	3.9	\$15,331	53
Tract 0144.00 Westchester, NY	11.2	2.9	\$28,300	97.8

Sources: U.S. Bureaus of Census, Labor Statistics, and Economic Analysis; Calculations generated by StatsAmerica.

Distress Criteria Statistical Report

Reference Date: All data is from Census ACS Estimates

Region Consists of: 36119014100, 36119014300, 36119014400

Report Date: 8/28/2017 4:19:03 PM



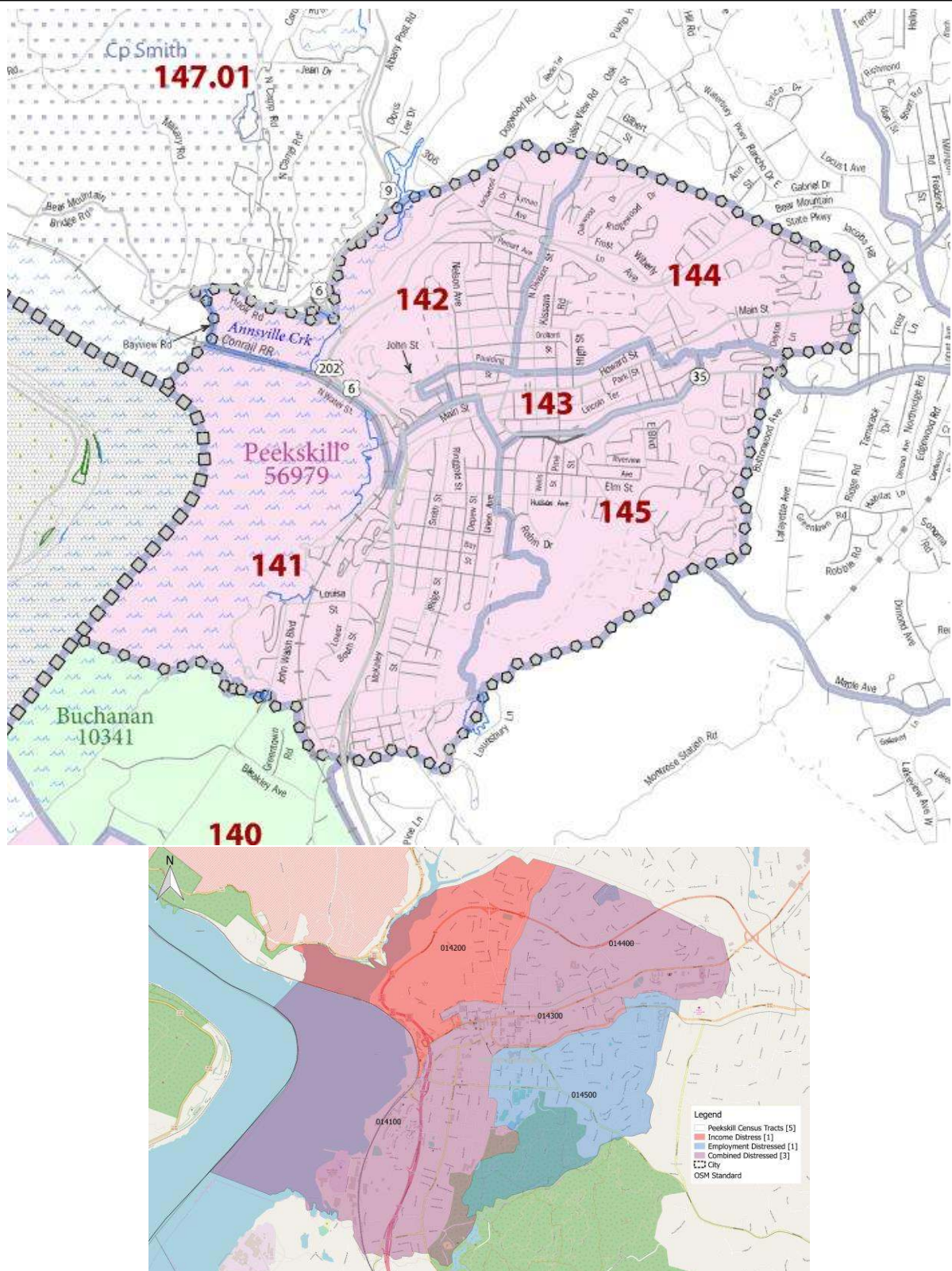


Figure 24: CITY of PEEKSKILL ECONOMICALLY DISTRESSED CENSUS TRACTS

## Village of Ossining

Of the 5 census tracts that intersect Ossining, three show signs of distress. The three census tracts have an unemployment rate a point higher than the national rate and per capita income is equal to the national average.

**Table 30: DISTRESS CRITERIA STATISTICAL REPORT-OSSINING, WESCHESTER COUNTY**

Economic Distress Criteria—Primary Elements				
	Ossining	U.S.	Threshold Calculations	
2015 Unemployment Rate (5-Year ACS)	9.3	8.3	1	
2015 Per Capita Money Income (5-Year ACS)	\$29,178	\$28,930	100.86%	
Economic Distress Criteria—Geographic Components				
Census Tract	Unemp. Rate 2015 ACS	Threshold Calculation	PCMI 2015 ACS	Threshold Calculation
Tract 0133.01 Westchester, NY	4.4	-3.9	\$22,445	77.6
Tract 0133.04 Westchester, NY	11.5	3.2	\$28,529	98.6
Tract 0134.00 Westchester, NY	9.8	1.5	\$32,795	113.4

Sources: U.S. Bureau of Census, Labor Statistics, and Economic Analysis; Calculations generated by StatsAmerica.

Distress Criteria Statistical Report

Reference Date: All data is from Census ACS Estimates

Region Consists of: 36119013304, 36119013400, 36119013301

Report Date: 10/10/2017 10:03:56 AM



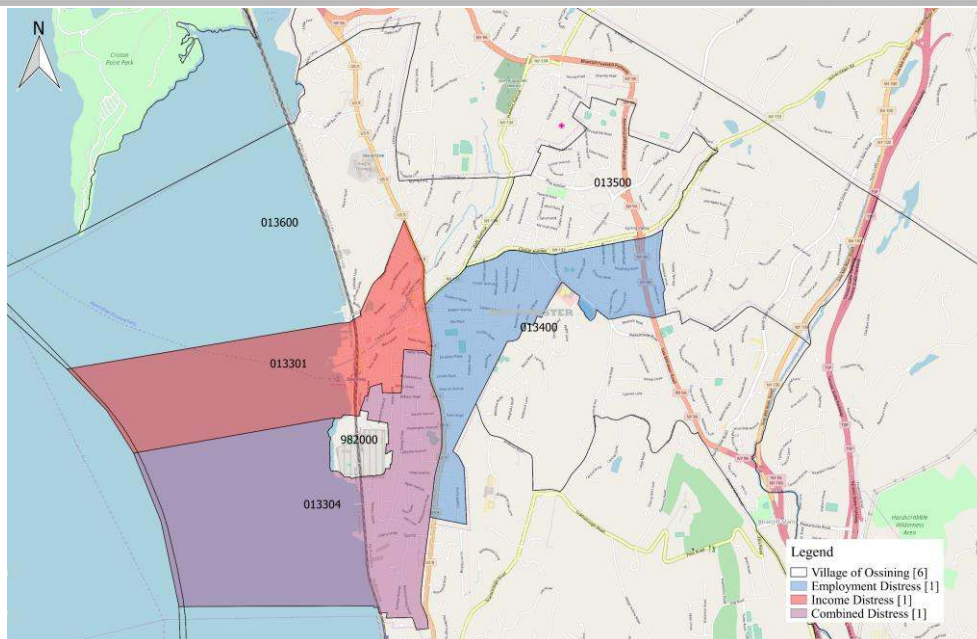
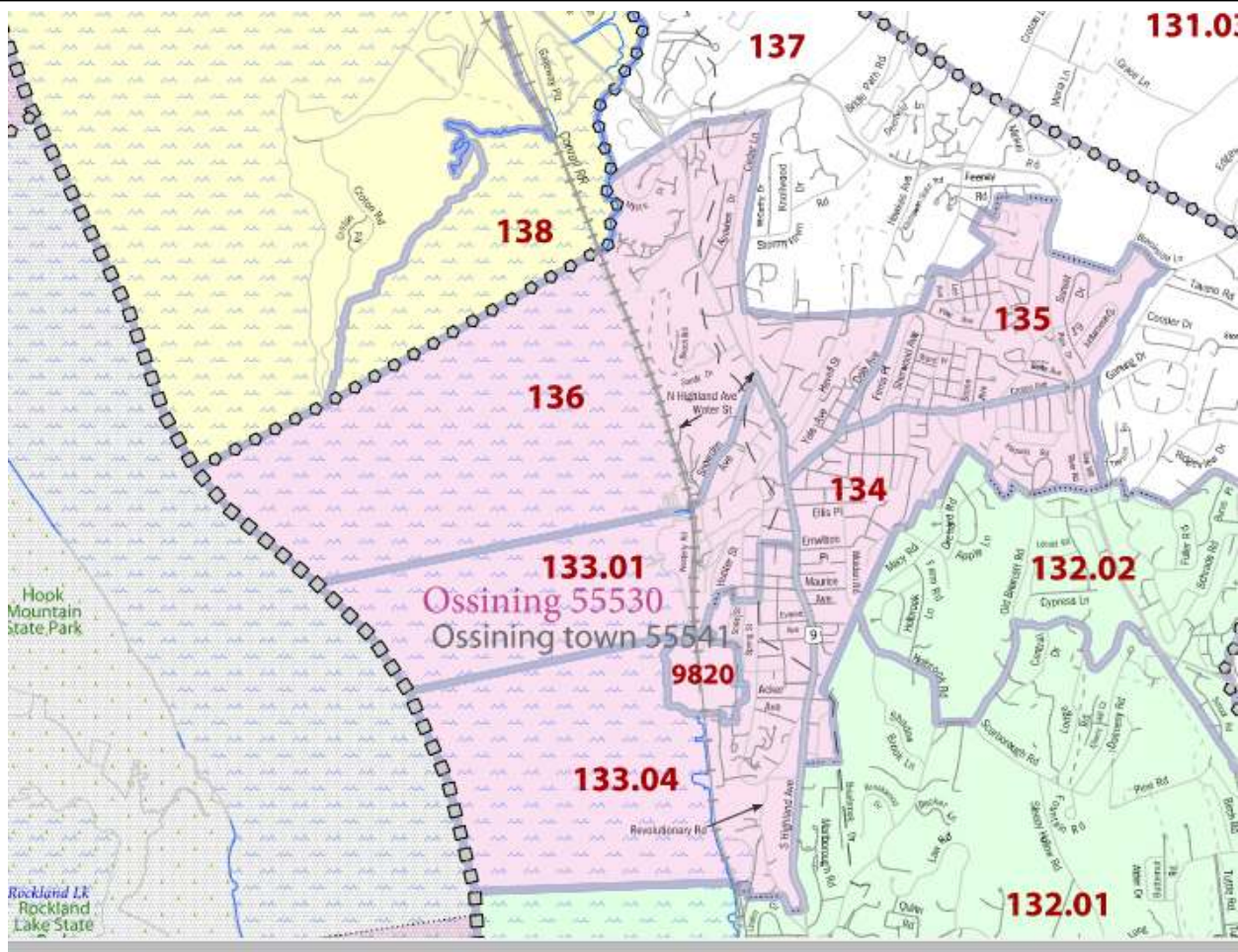


Figure 25: VILLAGE OF OSSINING ECONOMICALLY DISTRESSED CENSUS TRACTS

### III. APPENDICES

#### A. LEGEND U.S Census Bureau New York 2010 Census - Census Tract Reference Maps

LEGEND			
SYMBOL DESCRIPTION	SYMBOL	LABEL STYLE	
Federal American Indian Reservation		<b>L'ANSE RES 1880</b>	
Off Reservation Trust Land, Hawaiian Home Land		<b>T1880</b>	
Oklahoma Tribal Statistical Area, Alaska Native Village Statistical Area, Tribal Designated Statistical Area		<i>KAW OTSA 5340</i>	
State American Indian Reservation		Tama Res 4125	
State Designated Tribal Statistical Area		<i>Lumbee STSA 9815</i>	
Alaska Native Regional Corporation		<b>NANA ANRC 52120</b>	
State (or statistically equivalent entity)		<b>NEW YORK 36</b>	
County (or statistically equivalent entity)		<b>ERIE 029</b>	
Minor Civil Division (MCD) <sup>1,2</sup>		Bristol town 07485	
Consolidated City		<b>MILFORD 47500</b>	
Incorporated Place <sup>1,3</sup>		<b>Davis 18100</b>	
Census Designated Place (CDP) <sup>3</sup>		<i>Incline Village 35100</i>	
Census Tract		<b>33.07</b>	

DESCRIPTION	SYMBOL	DESCRIPTION	SYMBOL
Interstate		Water Body	
U.S. Highway		Swamp or Marsh	
State Highway		Glacier	
Other Road		Military	
4WD Trail, Stairway, Alley, Walkway, or Ferry		National or State Park, Forest, or Recreation Area	
Railroad		Inset Area	
Pipeline or Power Line		Outside Subject Area	
Ridge or Fence			
Property Line			
Nonvisible Boundary or Feature Not Elsewhere Classified			

Where state, county, and/or MCD boundaries coincide, the map shows the boundary symbol for only the highest-ranking of these boundaries.

1 A '\*' following an MCD name denotes a false MCD. A '\*' following a place name indicates that a false MCD exists with the same name and FIPS code as the place; the false MCD label is not shown.

2 MCD boundaries are shown in the following states in which MCDs have functioning governments: Connecticut, Maine, Massachusetts, Michigan, Minnesota, New Hampshire, New Jersey, New York, Pennsylvania, Rhode Island, Vermont, and Wisconsin.

3 Place label color correlates to the place fill color.

## REFERENCES

Indiana Business Research Center

<http://www.ibrc.indiana.edu/>

StatsAmerica

<http://www.statsamerica.org/>

<http://www.statsamerica.org/distress/distress.aspx>

U.S Census Bureau New York 2010 Census - Census Tract Reference Maps

[https://www.census.gov/geo/maps-data/maps/2010ref/st36\\_tract.html](https://www.census.gov/geo/maps-data/maps/2010ref/st36_tract.html)

U.S. Department of Commerce Economic Development Administration

<http://www.eda.gov/about/>

<http://www.eda.gov/annual-reports/fy2016/states/ny.htm>

Base Maps for Census Tracts

© OpenStreetMap contributors

[Licensed Under Creative Commons Attribution-ShareAlike 2.0 \(CC BY-SA\).](#)

Maps made with

