

# Sullivan County Profile 2017

*A collection of recent demographic, social and economic data*

Compiled by

Jan Vink

Cornell Program on Applied Demographics



Cornell University



Program  
on Applied  
Demographics

CORNELL POPULATION CENTER

This profile is a part of a set of profiles generated for each county in New York State. The profiles were developed and generated by the Cornell Program on Applied Demographics. The work is sponsored by the New York State Data Center in the New York State Department of Labor.

Cornell Program on Applied Demographics:

The Program on Applied Demographics (PAD) brings skills in demographics, economics, statistics, data gathering and data analysis together to provide a variety of organizations with data, information and advice. PAD is located in the Department of Policy Analysis and Management within the College of Human Ecology at Cornell University. PAD is also affiliated with the Cornell Institute for Social and Economic Research and the Cornell Population Center.

For more information: <http://pad.human.cornell.edu/>

New York State Data Center:

The New York State Data Center (NYSDC) is located in the Division of Research and Statistics within the New York State Department of Labor. The State Data Center operates as part of a nationwide effort to improve public access to data provided by the U.S. Census Bureau. The U.S. Census Bureau collects and tabulates data on a multitude of subjects such as population, social, economic and housing demographics, labor force data, health care, migration and transportation. These data play a critical role in understanding our local and larger surrounding communities. Census data also influence state and federal funding, aid decision making in the legislative process, and determine each state's number of congressional seats. As the lead agency in New York for the SDC program, the New York State Data Center helps users navigate through the multitude of surveys and products provided by the U.S. Census Bureau.

For more information: <https://labor.ny.gov/nys-data-center/>

All profiles are freely downloadable as PDF documents on the PAD website:

<http://pad.human.cornell.edu/profiles/index.cfm>

This profile is an update from the County Profile produced in 2013. The 2013 profile also contained information on agriculture related items and can be found at <https://pad.human.cornell.edu/profiles/2013/Sullivan.pdf>

## Contents

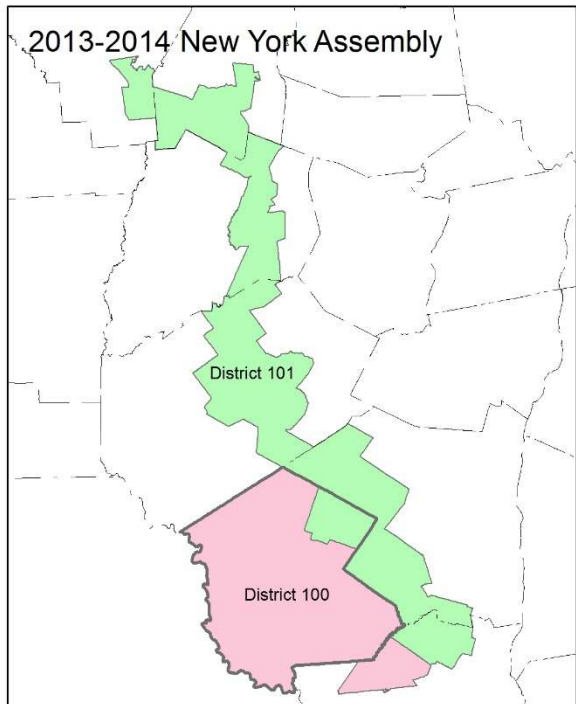
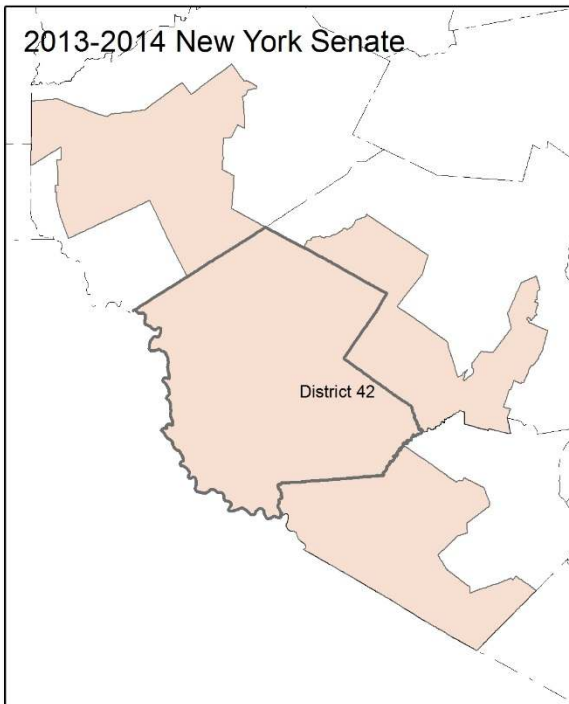
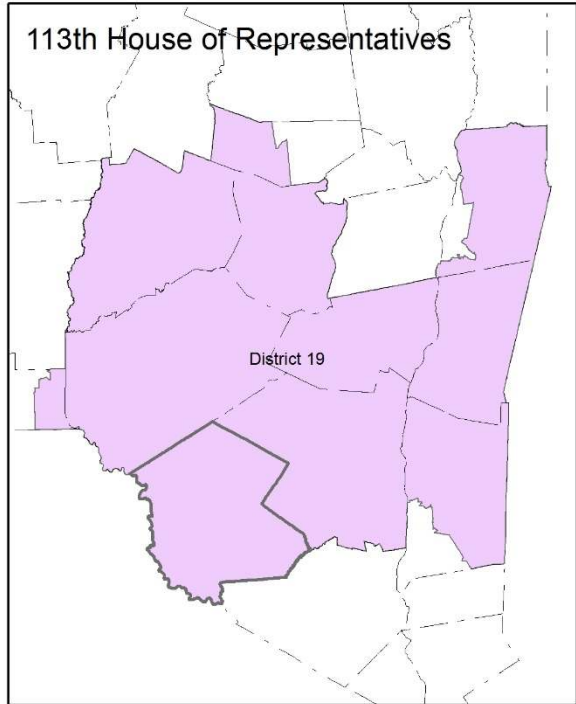
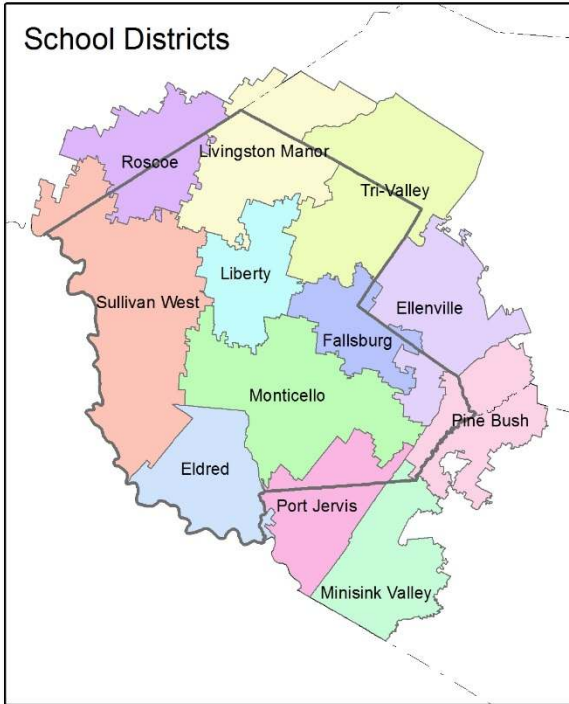
1	Reference Maps (towns and places as defined in 2010)	3
2	Population density and Urban Areas Map	5
3	Total Population	6
3.1	Historic and projected	6
3.2	Change since previous Census	6
3.3	Annual population estimates	7
3.4	Sub County population change 2010-2015	8
3.5	Sub County population change 2010-2015	8
4	Components of population change	9
4.1	Vital Statistics	9
4.2	Migration	10
5	Population by age	11
5.1	Historic and projected population pyramids	11
5.2	Selected age groups	12
5.3	Median age	13
6	Race	14
6.1	Total and household population by race	14
6.2	Race composition by age	14
7	Housing units	15
7.1	Characteristics	15
7.2	Historical data on number of housing units and occupancy status	16
7.3	Building Permits 2000-2015	16
8	Education	17
8.1	Enrollment by level of school	17
8.2	Enrollment by age	17
8.3	Percentage age 18-24 enrolled in college	17
8.4	Educational attainment	18
9	Language spoken at home	18
10	Labor Force Characteristics	19
10.1	Labor force, employment and unemployment	19
10.2	Annual unemployment rate	20
10.3	Employment and number of jobs	20
10.4	Class of worker	21
11	Household Income	22
11.1	Income Distribution	22
11.2	Median household income: Trends over time	23
12	Poverty	23
12.1	Family Income to Poverty Ratio	23
12.2	Poverty: Trends over time: Count	24
12.3	Poverty: Trends over time: Rate	24
12.4	Poverty characteristics	25
13	Glossary	26
14	References	29

1 Reference Maps (towns and places as defined in 2010)

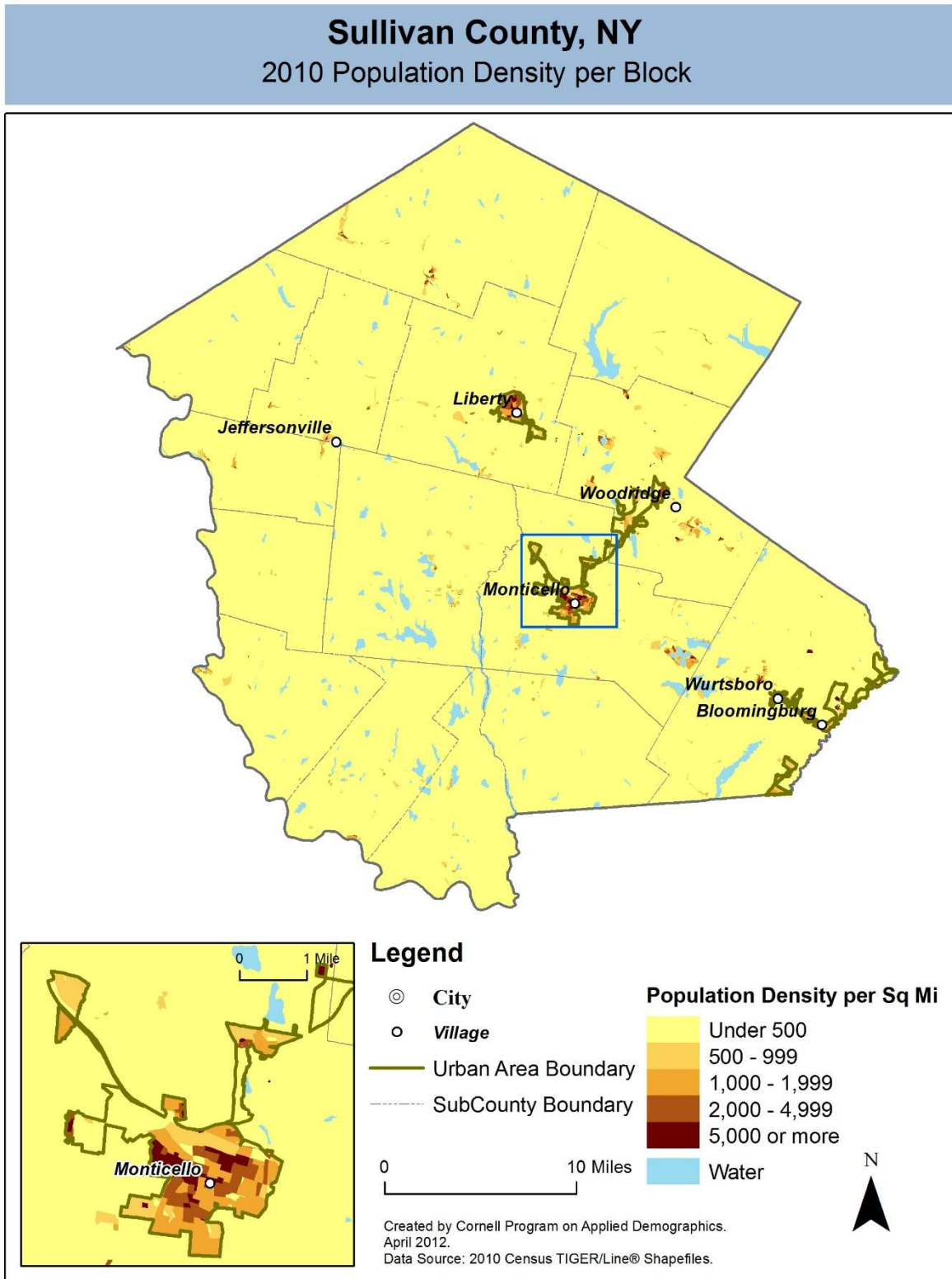


## Sullivan County, NY

### Overlap with School and Political Districts



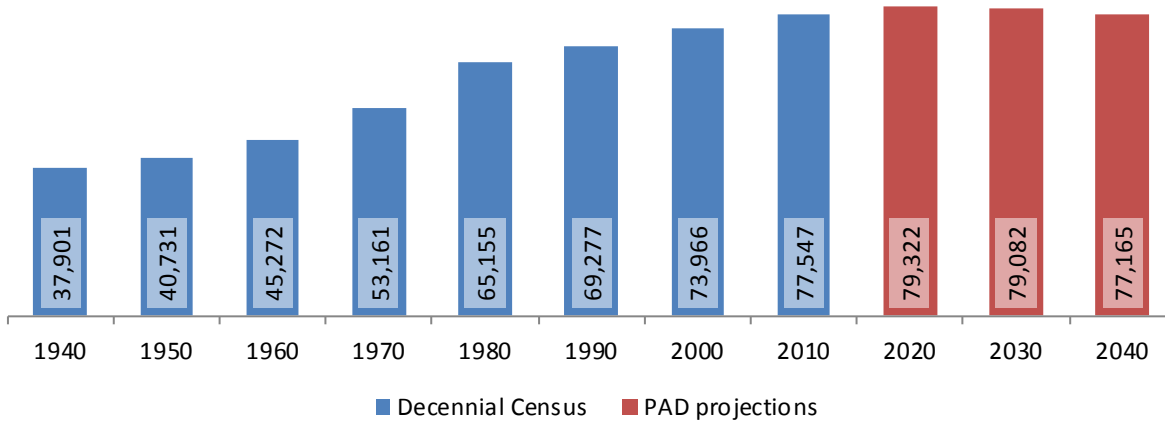
2 Population density and Urban Areas Map



### 3 Total Population

#### 3.1 Historic and projected

Total population, Sullivan County, 1940-2040



Source: 1940-2010 Decennial Census and projections by Cornell Program on Applied Demographics

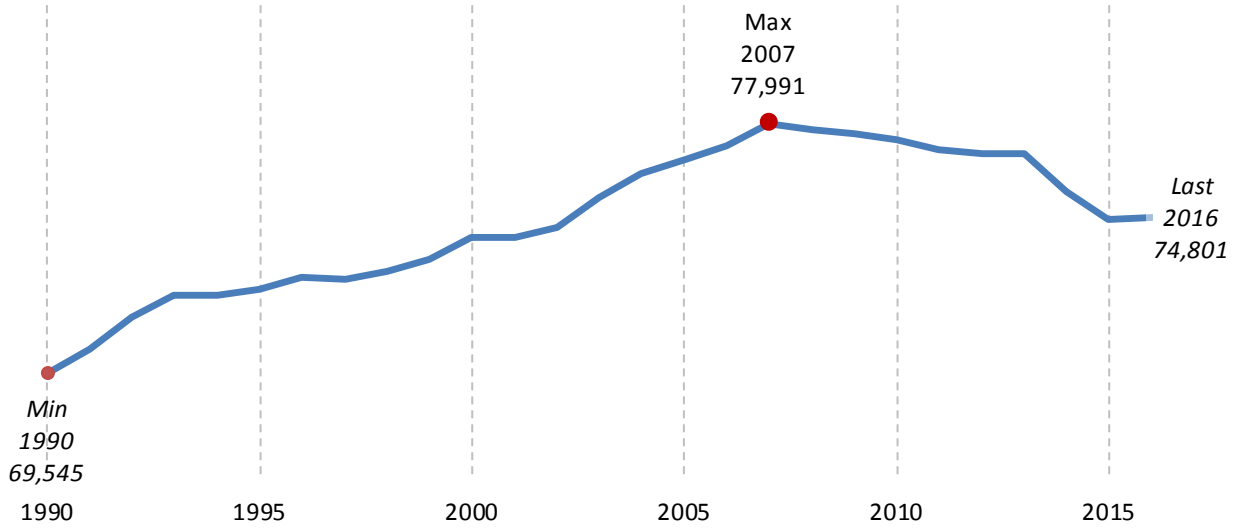
#### 3.2 Change since previous Census

	Total population	Change	
		Number	Percent
Decennial Census	1940	37,901	
	1950	40,731	2,830 7.5%
	1960	45,272	4,541 11.1%
	1970	53,161	7,889 17.4%
	1980	65,155	11,994 22.6%
	1990	69,277	4,122 6.3%
	2000	73,966	4,689 6.8%
	2010	77,547	3,581 4.8%
PAD projections	2020	79,322	1,775 2.3%
	2030	79,082	-240 -0.3%
	2040	77,165	-1,917 -2.4%

Source: 1940-2010 Decennial Census and projections by Cornell Program on Applied Demographics

### 3.3 Annual population estimates

**Annual population estimates  
Sullivan County, 1990-2016**



Source: U.S. Census Bureau population estimates (1990-1999 and 2000-2009 intercensal and vintage 2016 postcensal)



### 3.4 Sub County population change 2010-2015

	Total Population		Difference	
	2000	2010	Count	%
New York State	18,976,821 *	19,378,102	401,281	2.1%
Sullivan County	73,966	77,547	3,581	4.8%
<b>Towns</b>				
Bethel	4,362	4,255	-107	-2.5%
Callicoon	3,052	3,057	5	0.2%
Cochecton	1,328	1,372	44	3.3%
Delaware	2,719	2,670	-49	-1.8%
Fallsburg	12,234	12,870	636	5.2%
Forestburgh	833	819	-14	-1.7%
Fremont	1,391	1,381	-10	-0.7%
Highland	2,404	2,530	126	5.2%
Liberty	9,632	9,885	253	2.6%
Lumberland	1,939	2,468	529	27.3%
Mamakating	11,002	12,085	1,083	9.8%
Neversink	3,553	3,557	4	0.1%
Rockland	3,913	3,775	-138	-3.5%
Thompson	14,189	15,308	1,119	7.9%
Tusten	1,415	1,515	100	7.1%

\* Original counts revised through Count Question Resolution Program (CQR)

Source: U.S. Census Bureau intercensal population estimates 2000-2010

### 3.5 Sub County population change 2010-2015

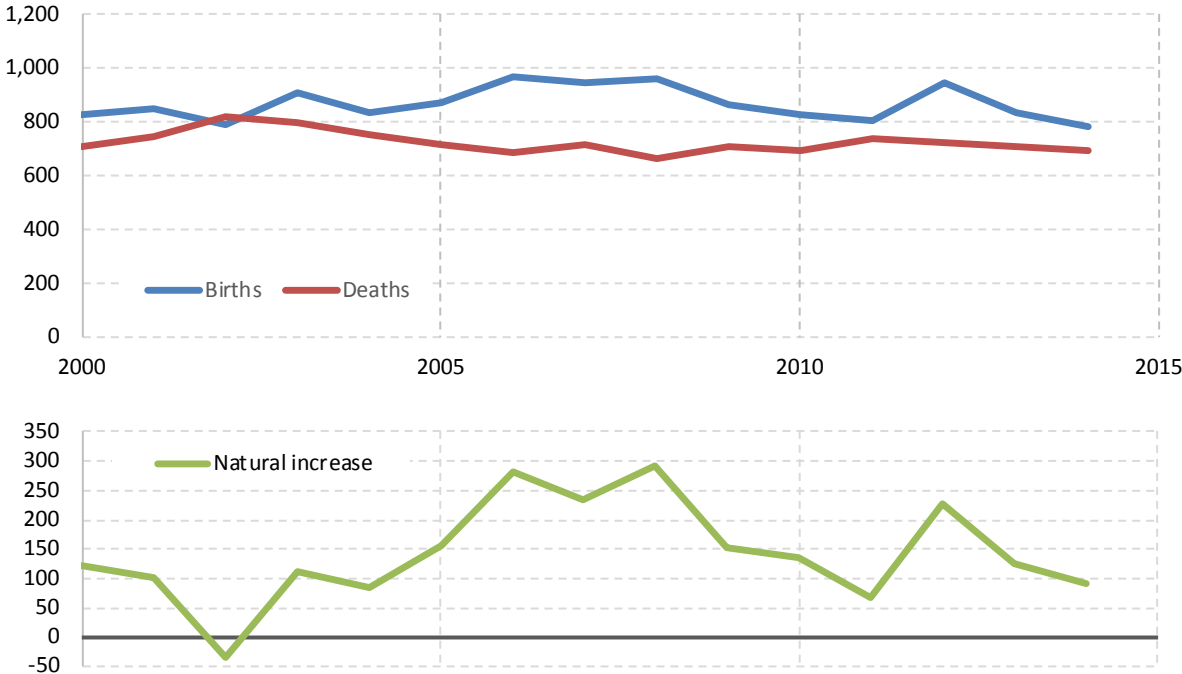
	Total Population		Difference	
	2010 base	2015	Count	%
New York State	19,378,087	19,795,791	417,704	2.2%
Sullivan County	77,541	74,877	-2,664	-3.4%
<b>Towns</b>				
Bethel	4,255	4,115	-140	-3.3%
Callicoon	3,057	2,929	-128	-4.2%
Cochecton	1,373	1,316	-57	-4.2%
Delaware	2,669	2,575	-94	-3.5%
Fallsburg	12,870	12,773	-97	-0.8%
Forestburgh	819	788	-31	-3.8%
Fremont	1,381	1,335	-46	-3.3%
Highland	2,530	2,439	-91	-3.6%
Liberty	9,887	9,363	-524	-5.3%
Lumberland	2,468	2,394	-74	-3.0%
Mamakating	12,083	11,488	-595	-4.9%
Neversink	3,553	3,407	-146	-4.1%
Rockland	3,773	3,607	-166	-4.4%
Thompson	15,308	14,871	-437	-2.9%
Tusten	1,515	1,477	-38	-2.5%

Source: U.S. Census Bureau population estimates 2010-2015

**4 Components of population change**

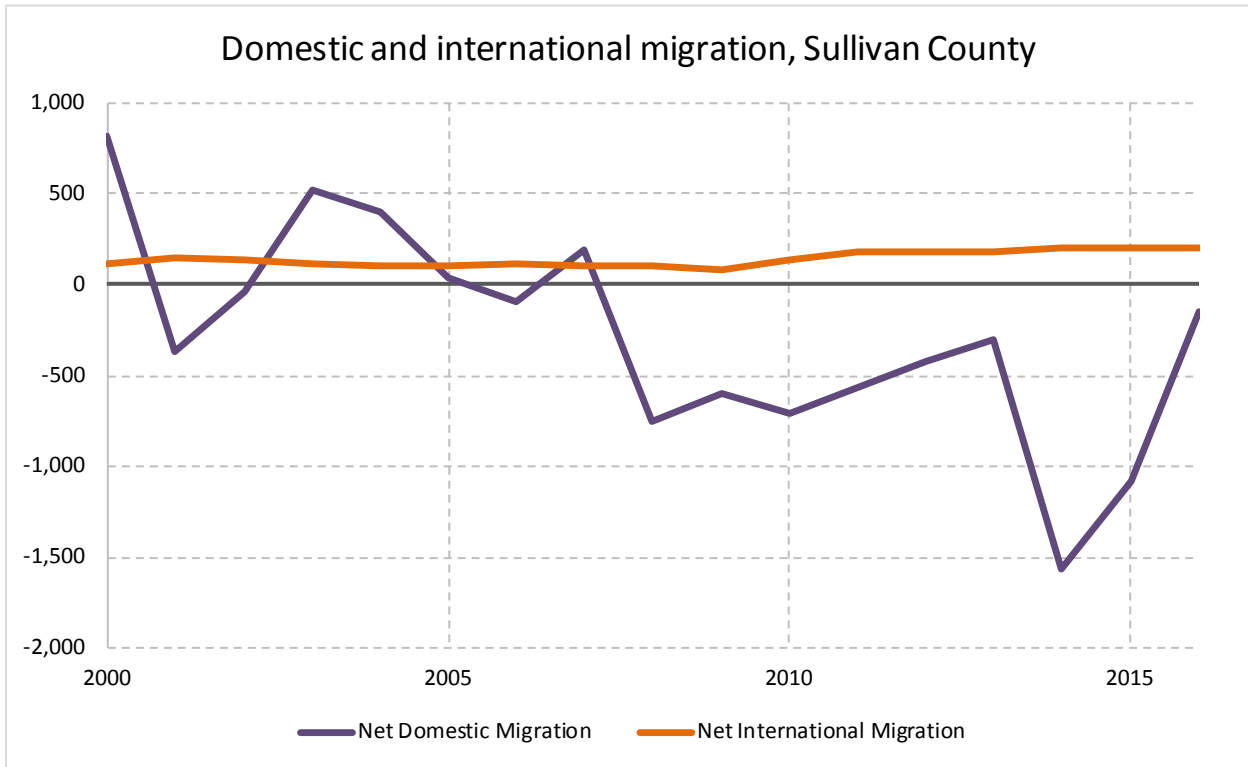
**4.1 Vital Statistics**

Vital Statistics, Sullivan County



Source: New York State Department of Health

## 4.2 Migration

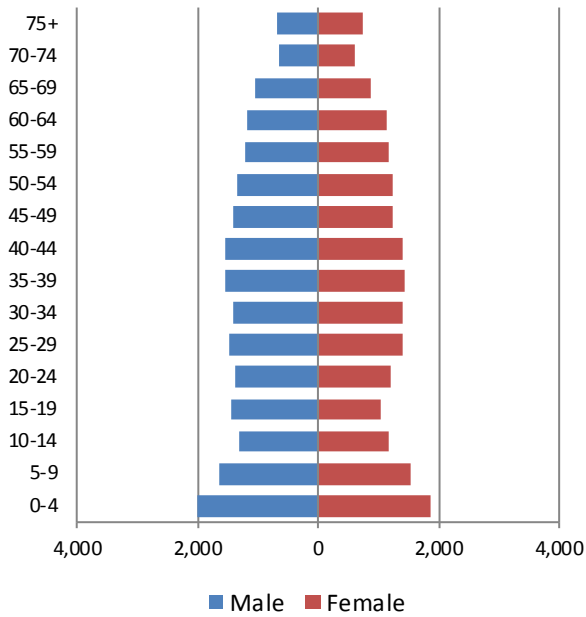


Source: Census Bureau population estimates (V2010 and V2016)

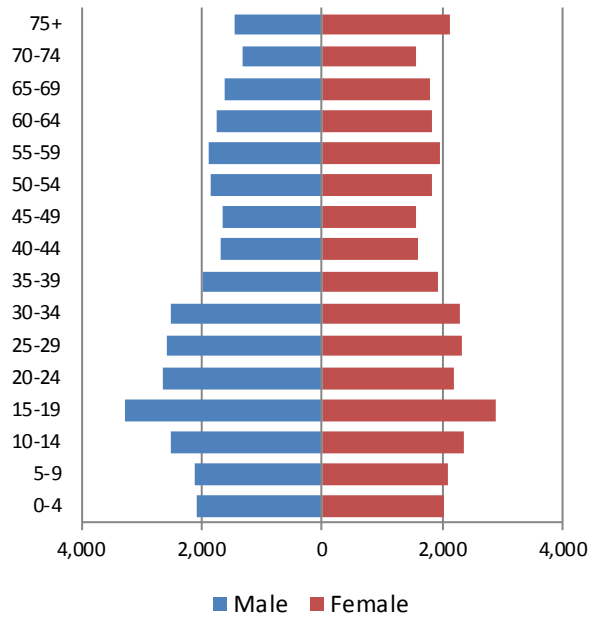
## 5 Population by age

### 5.1 Historic and projected population pyramids

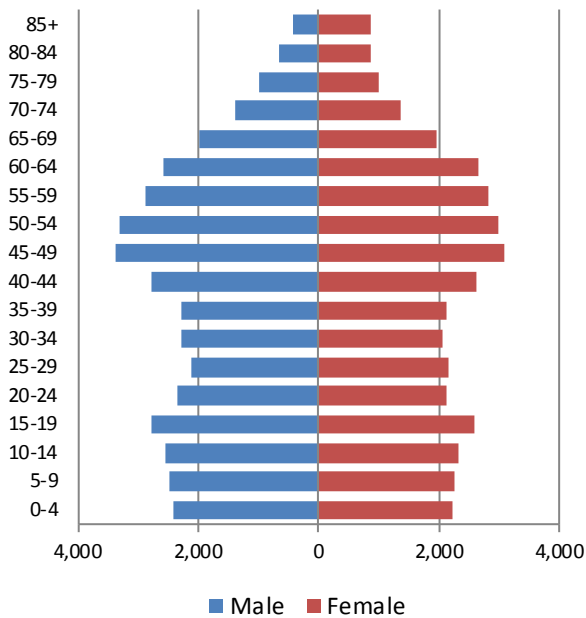
1950 Population Pyramid, Sullivan County



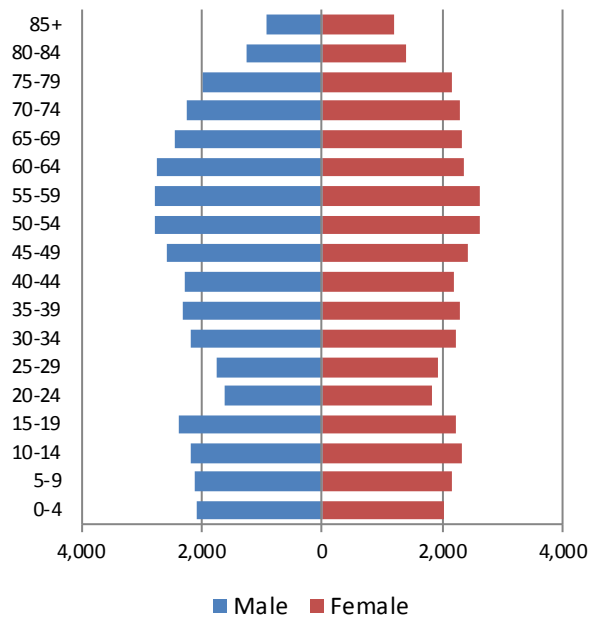
1980 Population Pyramid, Sullivan County



2010 Population Pyramid, Sullivan County



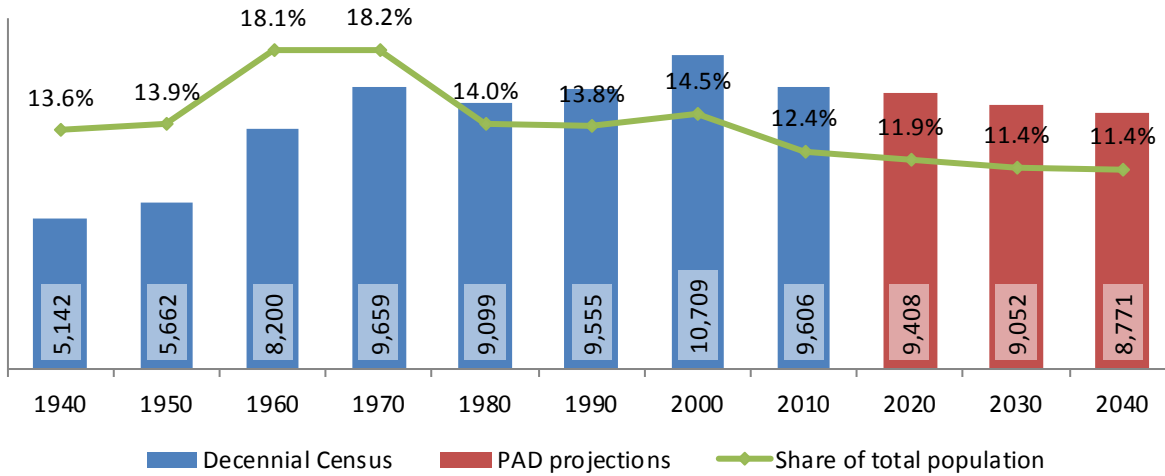
2040 Population Pyramid, Sullivan County



Source: 1950, 1980, 2010 Decennial Census and projections by Cornell Program on Applied Demographics

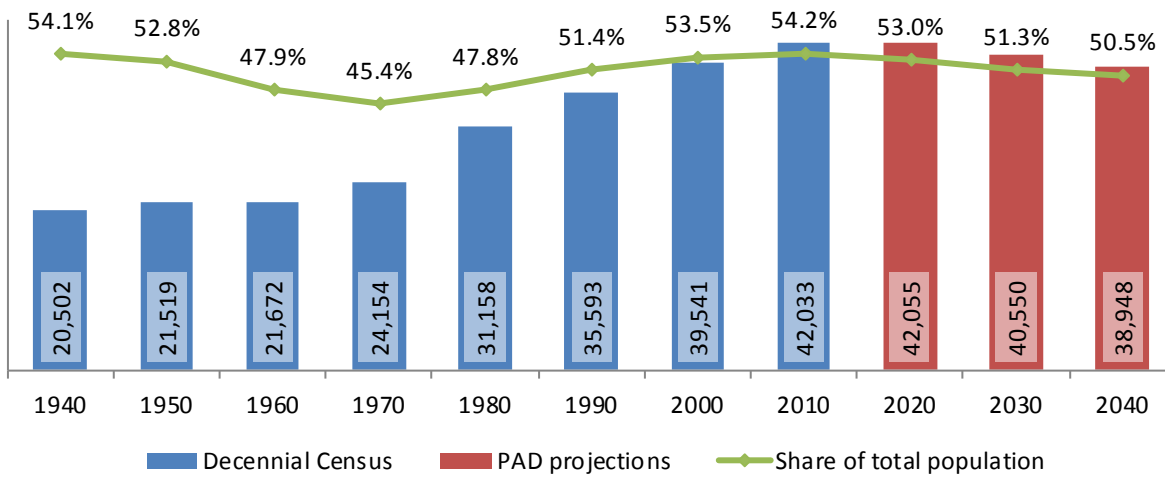
5.2 Selected age groups

Population age 5-14, Sullivan County, 1940-2040



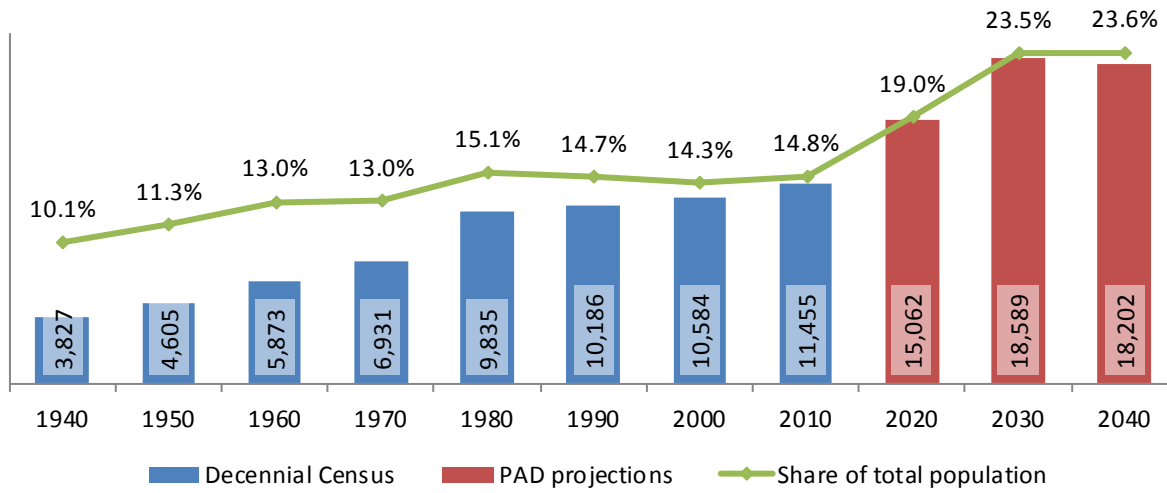
Source: 1940-2010 Decennial Census and projections by Cornell Program on Applied Demographics

Population age 25-64, Sullivan County, 1940-2040



Source: 1940-2010 Decennial Census and projections by Cornell Program on Applied Demographics

**Population age 65 and over, Sullivan County, 1940-2040**



Source: 1940-2010 Decennial Census and projections by Cornell Program on Applied Demographics

**5.3 Median age**

	Sullivan County	New York State
<b>Median age</b>		
2000	38.8	35.9
2010	41.7	38.0
2015	42.9	38.3

Source: 2000, 2010 Decennial Census, 2015 Population Estimates

## 6 Race

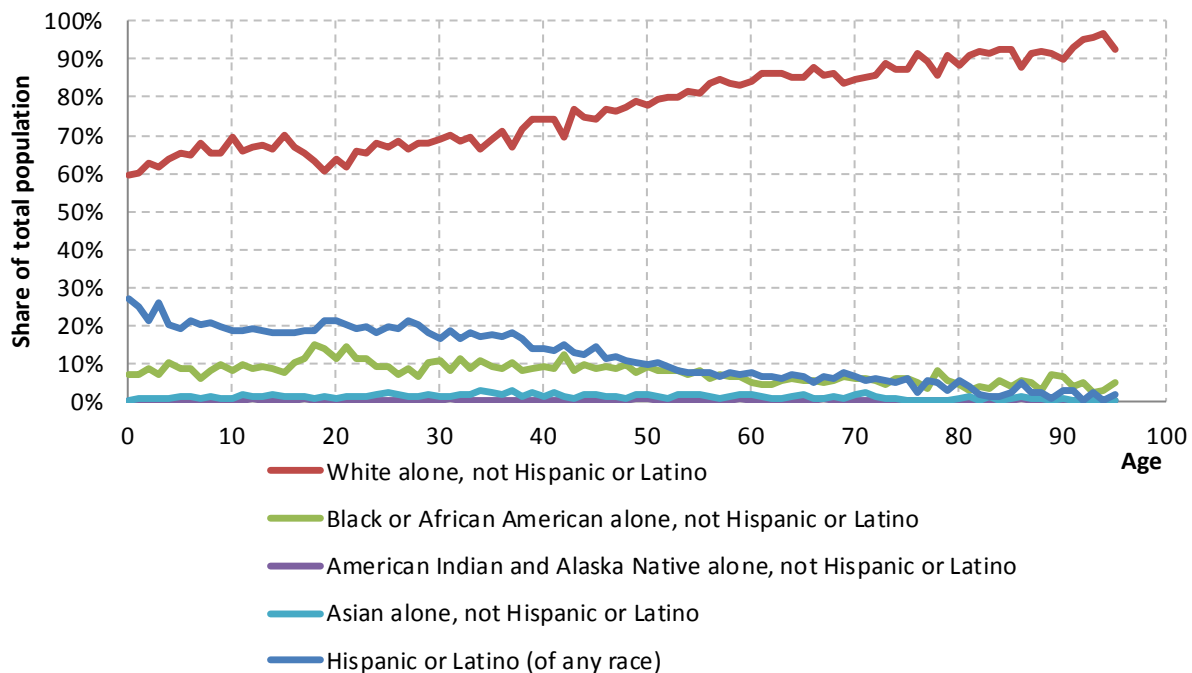
### 6.1 Total and household population by race

	Total		In households		In Group Quarters
	Count	Percentage	Count	Percentage	Count
<b>Total population</b>	77,547	100%	73,722	100%	3,825
Not Hispanic or Latino					
One race					
White	57,780	74.5%	56,169	76.2%	1,611
Black or African American	6,349	8.2%	5,016	6.8%	1,333
American Indian and Alaska Native	228	0.3%	214	0.3%	14
Asian	1,033	1.3%	970	1.3%	63
Native Hawaiian and Other Pacific Islander	14	0.0%	-	-	-
Some other race	189	0.2%	167	0.2%	22
Two or more races	1,400	1.8%	1,350	1.8%	50
Hispanic or Latino (of any race)	10,554	13.6%	9,824	13.3%	730

Source: 2010 Decennial Census

### 6.2 Race composition by age

Race composition by age, Sullivan County



Source: 2010 Decennial Census

## 7 Housing units

### 7.1 Characteristics

	COUNT		PERCENTAGE	
	Estimate	Margin of error	Estimate	Margin of error
<b>HOUSING OCCUPANCY</b>				
<b>Total housing units</b>	49,548	± 182	100.0%	
Occupied housing units	28,404	± 639	57.3%	± 1.2
Vacant housing units	21,144	± 582	42.7%	± 1.2
<b>YEAR STRUCTURE BUILT</b>				
<b>Total housing units</b>	49,548	± 182	100.0%	
Built 2014 or later	0	± 27	0.0%	± 0.1
Built 2010 to 2013	323	± 112	0.7%	± 0.2
Built 2000 to 2009	6,520	± 497	13.2%	± 1.0
Built 1990 to 1999	4,742	± 382	9.6%	± 0.8
Built 1980 to 1989	7,623	± 543	15.4%	± 1.1
Built 1970 to 1979	6,177	± 415	12.5%	± 0.8
Built 1960 to 1969	4,827	± 448	9.7%	± 0.9
Built 1950 to 1959	4,823	± 410	9.7%	± 0.8
Built 1940 to 1949	4,099	± 387	8.3%	± 0.8
Built 1939 or earlier	10,414	± 592	21.0%	± 1.2
<b>HOUSING TENURE</b>				
<b>Occupied housing units</b>	28,404	± 639	100.0%	
Owner-occupied	18,611	± 467	65.5%	± 1.4
Renter-occupied	9,793	± 526	34.5%	± 1.4
<b>HOUSE HEATING FUEL</b>				
<b>Occupied housing units</b>	28,404	± 639	100.0%	
Utility gas	859	± 168	3.0%	± 0.6
Bottled, tank, or LP gas	3,500	± 345	12.3%	± 1.2
Electricity	4,396	± 390	15.5%	± 1.3
Fuel oil, kerosene, etc.	16,222	± 645	57.1%	± 1.9
Coal or coke	131	± 55	0.5%	± 0.2
Wood	3,021	± 281	10.6%	± 1.0
Solar energy	14	± 12	0.0%	± 0.1
Other fuel	199	± 90	0.7%	± 0.3
No fuel used	62	± 49	0.2%	± 0.2
<b>VALUE</b>				
<b>Owner-occupied units</b>	18,611	± 467	100.0%	
Less than \$50,000	1,427	± 226	7.7%	± 1.2
\$50,000 to \$99,999	2,796	± 323	15.0%	± 1.7
\$100,000 to \$149,999	3,491	± 295	18.8%	± 1.5
\$150,000 to \$199,999	3,850	± 330	20.7%	± 1.7
\$200,000 to \$299,999	4,056	± 313	21.8%	± 1.7
\$300,000 to \$499,999	1,783	± 212	9.6%	± 1.1
\$500,000 to \$999,999	895	± 188	4.8%	± 1.0
\$1,000,000 or more	313	± 108	1.7%	± 0.6
Median (dollars)	165,900	± 3,215		

Source: 2011-2015 American Community Survey



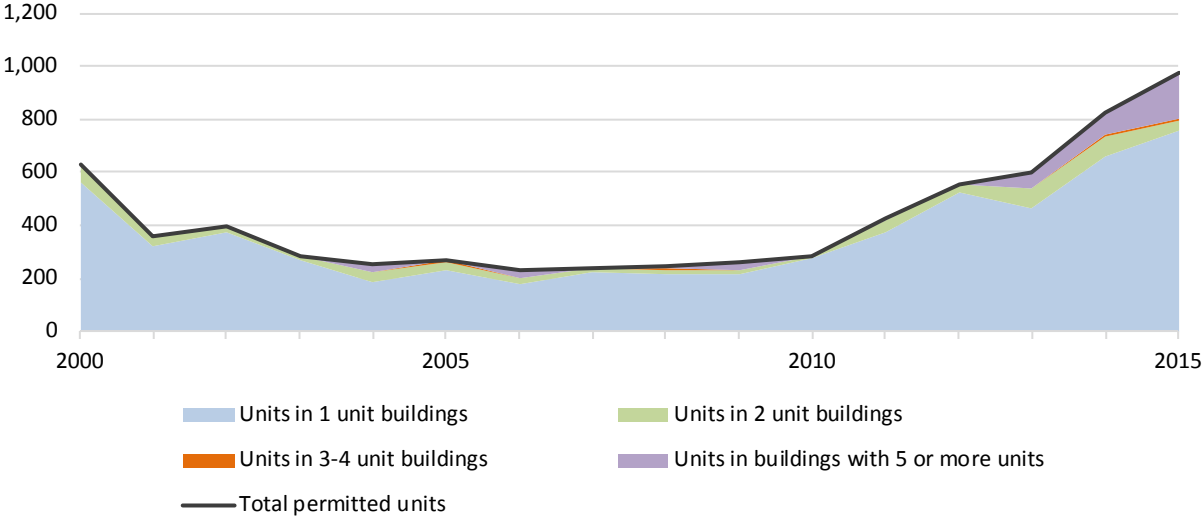
**7.2 Historical data on number of housing units and occupancy status**

Year	Number of Housing Units	Change since previous Census	Occupied	Occupancy rate	Vacant
1970	47,401		16,865	35.6%	30,536
1980	45,863	-3.2%	23,021	50.2%	22,842
1990	41,814	-8.8%	24,576	58.8%	17,238
2000	44,730	7.0%	27,661	61.8%	17,069
2010	49,186	10.0%	30,139	61.3%	19,047

Source: 1970-2010 Decennial Census

**7.3 Building Permits 2000-2015**

Building permits by number of permitted units in building, Sullivan County



Source: Census Bureau Building Permits Survey

## 8 Education

### 8.1 Enrollment by level of school

	Estimate	Margin of error
<b>Total enrolled in school</b>	17,166	± 555
Nursery school, preschool	691	± 126
Kindergarten to 12th grade	12,339	± 325
Kindergarten	935	± 173
Elementary: grade 1 to grade 4	3,497	± 322
Elementary: grade 5 to grade 8	3,648	± 331
High school: grade 9 to grade 12	4,259	± 282
College, undergraduate	3,462	± 326
Graduate, professional school	674	± 195

Source: 2011-2015 American Community Survey

### 8.2 Enrollment by age

	Estimate	Margin of error
3 and 4 years	39.2%	± 7.3
5 to 9 years	91.0%	± 3.5
10 to 14 years	95.0%	± 3.0
15 to 17 years	94.7%	± 2.6
18 and 19 years	73.9%	± 6.9
20 to 24 years	35.5%	± 4.8
25 to 34 years	10.4%	± 2.6
35 years and over	2.2%	± 0.4

Source: 2011-2015 American Community Survey

### 8.3 Percentage age 18-24 enrolled in college

	Estimate	Margin of error
Population 18 to 24 years	6,651	± 117
Enrolled in college or graduate school	36.3%	± 3.6
Males 18 to 24 years	3,560	± 42
Enrolled in college or graduate school	34.9%	± 4.8
Females 18 to 24 years	3,091	± 107
Enrolled in college or graduate school	37.9%	± 6.3

Source: 2011-2015 American Community Survey

## 8.4 Educational attainment

	COUNT		PERCENTAGE	
	Estimate	Margin of error	Estimate	Margin of error
<b>Population 25 years and over</b>	53,118	± 116	100%	
<b>EDUCATIONAL ATTAINMENT</b>				
Less than 9th grade	2,161	± 259	4.1%	± 0.5
9th to 12th grade, no diploma	5,270	± 516	9.9%	± 1.0
High school graduate (includes equivalency)	18,084	± 778	34.0%	± 1.5
Some college, no degree	10,208	± 622	19.2%	± 1.2
Associate's degree	5,598	± 528	10.5%	± 1.0
Bachelor's degree	6,552	± 476	12.3%	± 0.9
Graduate or professional degree	5,245	± 435	9.9%	± 0.8
Percent high school graduate or higher			86.0%	± 1.1
Percent bachelor's degree or higher			22.2%	± 1.2

Source: 2011-2015 American Community Survey

## 9 Language spoken at home

	COUNT		PERCENTAGE		SPEAK ENGLISH LESS THAN "VERY WELL"	
	Estimate	Margin of error	Estimate	Margin of error	Estimate	Margin of error
<b>Population 5 years and over</b>	71,979	± 54	100%			
<b>LANGUAGE SPOKEN AT HOME</b>						
English only	61,033	± 672	84.8%	± 0.9		
Language other than English	10,946	± 680	15.2%	± 0.9	3,909	± 451
Spanish	6,690	± 504	9.3%	± 0.7	2,487	± 363
Other Indo-European languages	3,588	± 476	5.0%	± 0.7	1,195	± 236
Asian and Pacific Islander languages	453	± 106	0.6%	± 0.1	184	± 64
Other languages	215	± 107	0.3%	± 0.1	43	± 30

Source: 2011-2015 American Community Survey

## 10 Labor Force Characteristics

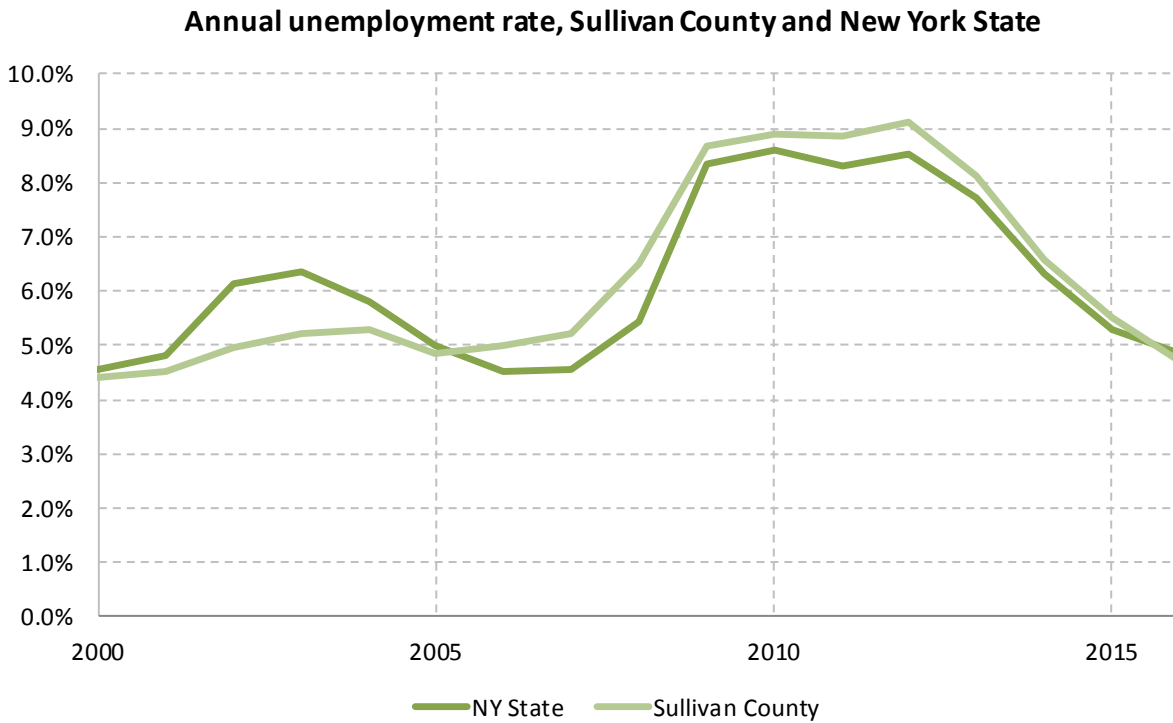
### 10.1 Labor force, employment and unemployment

	TOTAL		IN LABOR FORCE		EMPLOYED		UNEMPLOYMENT RATE	
	Estimate	Margin of error	Estimate	Margin of error	Estimate	Margin of error	Estimate	Margin of error
<b>Population 16 years and over</b>	61,736	± 138	59.1%	± 1.1	52.2%	± 1.1	11.5%	± 1.3
<b>AGE</b>								
16 to 19 years	4,001	± 244	32.1%	± 4.7	20.5%	± 4.3	36.2%	± 9.0
20 to 24 years	4,617	± 202	68.8%	± 4.5	57.5%	± 4.6	16.4%	± 4.6
25 to 29 years	4,234	± 110	83.9%	± 3.6	70.1%	± 4.1	16.5%	± 4.6
30 to 34 years	4,387	± 154	78.0%	± 4.3	67.2%	± 5.0	13.8%	± 4.2
35 to 44 years	9,047	± 151	76.6%	± 3.2	66.8%	± 3.4	12.7%	± 3.6
45 to 54 years	11,951	± 124	75.6%	± 2.7	69.4%	± 2.6	8.0%	± 1.8
55 to 59 years	6,083	± 303	66.4%	± 3.3	62.9%	± 3.6	5.3%	± 1.9
60 to 64 years	5,038	± 306	50.9%	± 3.7	46.9%	± 3.7	7.9%	± 3.3
65 to 74 years	7,567	± 68	27.7%	± 3.2	26.1%	± 3.2	5.8%	± 3.3
75 years and over	4,811	± 56	7.9%	± 2.0	7.2%	± 1.8	8.4%	± 6.6
<b>RACE AND HISPANIC OR LATINO ORIGIN</b>								
White alone	50,772	± 521	60.0%	± 1.1	53.3%	± 1.3	11.0%	± 1.3
Black or African American alone	5,307	± 246	51.1%	± 4.5	42.5%	± 4.0	16.7%	± 4.9
American Indian and Alaska Native alone	167	± 71	53.3%	± 22.1	50.3%	± 22.6	5.6%	± 7.6
Asian alone	1,080	± 58	63.2%	± 9.4	52.2%	± 9.9	17.4%	± 9.7
Two or more races	1,886	± 448	48.0%	± 12.1	42.6%	± 10.2	11.4%	± 5.2
Hispanic or Latino origin (of any race)	7,945	± 67	64.2%	± 3.6	54.7%	± 3.3	14.9%	± 3.9
White alone, not Hispanic or Latino	46,686	± 128	59.3%	± 1.2	53.0%	± 1.4	10.5%	± 1.3
<b>SEX</b>								
<b>Population 20 to 64 years</b>	45,357	± 215	72.1%	± 1.2	64.2%	± 1.4	11.0%	± 1.3
Male	23,497	± 161	71.9%	± 1.7	63.3%	± 1.9	11.7%	± 1.7
Female	21,860	± 116	72.5%	± 1.8	65.0%	± 2.3	10.3%	± 1.9
With own children under 18 years	7,183	± 388	77.2%	± 3.2	68.0%	± 3.4	11.9%	± 2.8
<b>EDUCATIONAL ATTAINMENT</b>								
<b>Population 25 to 64 years</b>	40,740	± 128	72.5%	± 1.3	64.9%	± 1.5	10.4%	± 1.3
Less than high school graduate	4,943	± 480	52.2%	± 5.1	41.8%	± 4.7	19.8%	± 4.9
High school graduate (includes equivalency)	13,405	± 683	71.4%	± 2.4	64.1%	± 2.6	10.3%	± 2.4
Some college or associate's degree	13,266	± 673	74.6%	± 2.5	66.0%	± 2.7	11.3%	± 2.1
Bachelor's degree or higher	9,126	± 624	82.1%	± 2.5	77.0%	± 2.7	6.2%	± 1.8

Table formula:      **LABOR FORCE** = # EMPLOYED + # UNEMPLOYED  
                           **% IN LABOR FORCE** = LABOR FORCE / TOTAL \* 100%  
                           **% EMPLOYED** = # EMPLOYED / TOTAL \* 100%  
                           **UNEMPLOYMENT RATE** = # UNEMPLOYED / LABOR FORCE \* 100%

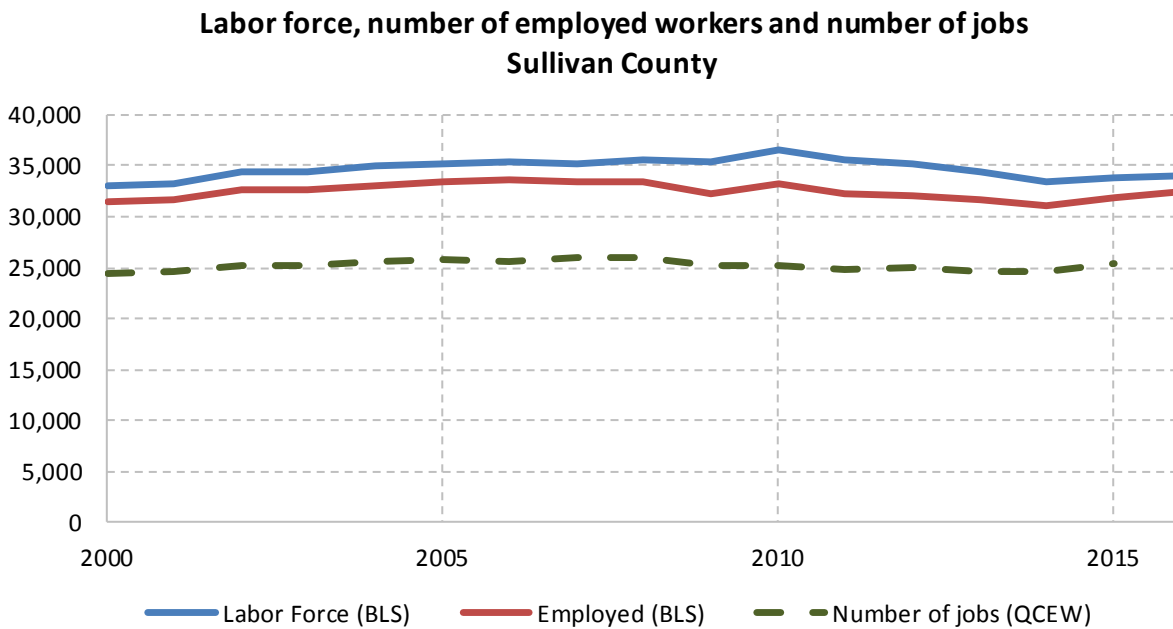
Source: 2011-2015 American Community Survey

### 10.2 Annual unemployment rate



Source: Bureau Labor Statistics (BLS)

### 10.3 Employment and number of jobs



Source: Bureau Labor Statistics (BLS) and NY Department of Labor - Quarterly Census of Employment and Wages (QCEW) – annual averages

## 10.4 Class of worker

		<b>Total</b>	<b>%Male</b>	<b>%Female</b>
Civilian employed population 16 years and over	Estimate	32,243	51.1%	48.9%
	<i>Margin of error</i>	$\pm 677$	$\pm 1.1$	$\pm 1.1$
Private for-profit wage and salary workers:	Estimate	18,190	55.6%	44.4%
	<i>Margin of error</i>	$\pm 791$	$\pm 2.0$	$\pm 2.0$
Employee of private company workers	Estimate	16,885	54.3%	45.7%
	<i>Margin of error</i>	$\pm 733$	$\pm 2.1$	$\pm 2.1$
Self-employed in own incorporated business workers	Estimate	1,305	72.2%	27.8%
	<i>Margin of error</i>	$\pm 269$	$\pm 6.2$	$\pm 6.2$
Private not-for-profit wage and salary workers	Estimate	5,088	31.8%	68.2%
	<i>Margin of error</i>	$\pm 482$	$\pm 4.0$	$\pm 4.0$
Local government workers	Estimate	4,099	42.0%	58.0%
	<i>Margin of error</i>	$\pm 442$	$\pm 4.5$	$\pm 4.5$
State government workers	Estimate	2,165	58.3%	41.7%
	<i>Margin of error</i>	$\pm 279$	$\pm 6.5$	$\pm 6.5$
Federal government workers	Estimate	497	59.2%	40.8%
	<i>Margin of error</i>	$\pm 136$	$\pm 11.9$	$\pm 11.9$
Self-employed in own not incorporated business workers and unpaid family workers	Estimate	2,204	66.7%	33.3%
	<i>Margin of error</i>	$\pm 299$	$\pm 6.2$	$\pm 6.2$

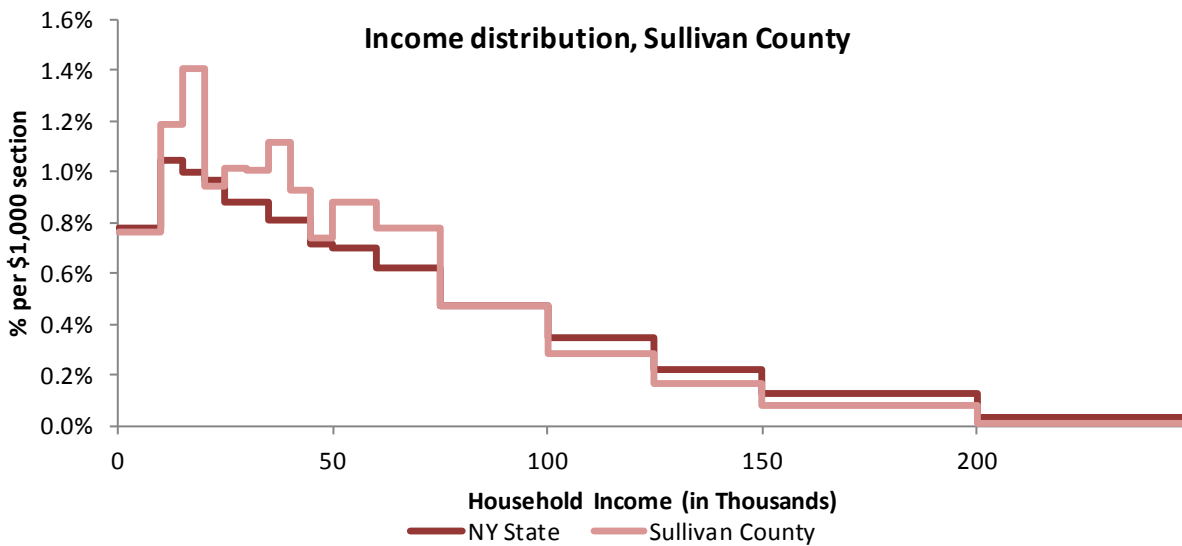
Source: 2011-2015 American Community Survey

## 11 Household Income

### 11.1 Income Distribution

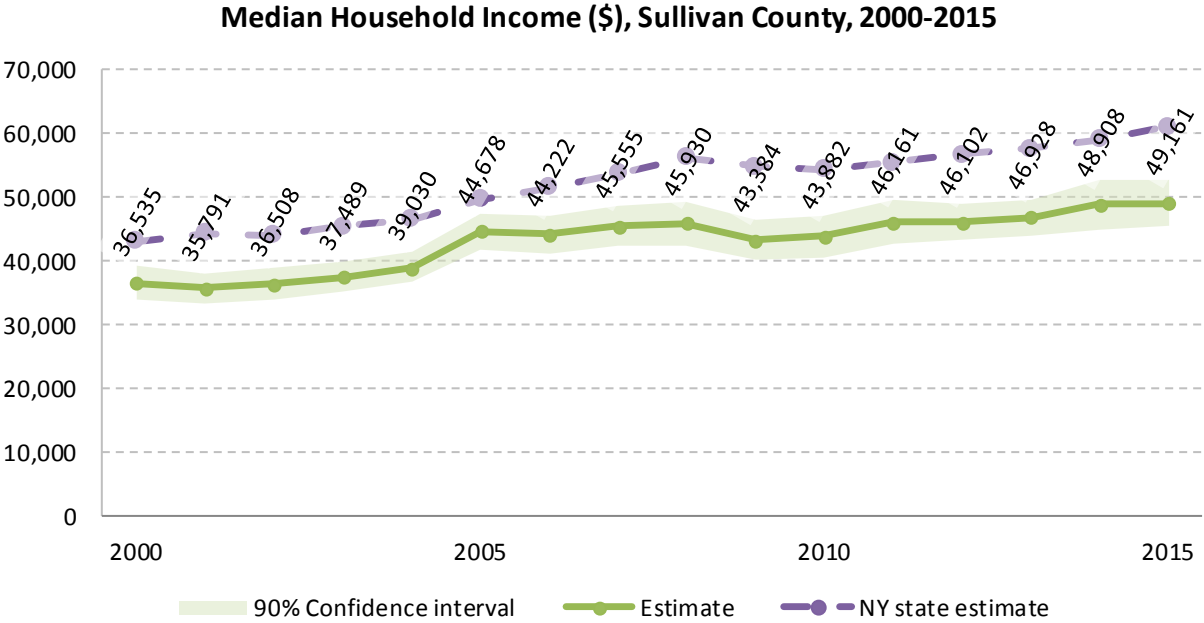
	Estimate	Margin of error	Interval width (in \$1,000)	Est. per \$1,000 section
<b>Total:</b>	28,404	± 639		
Less than \$10,000	2,166	± 285	10	216.6
\$10,000 to \$14,999	1,685	± 218	5	337.0
\$15,000 to \$19,999	2,000	± 341	5	400.0
\$20,000 to \$24,999	1,341	± 200	5	268.2
\$25,000 to \$29,999	1,446	± 249	5	289.2
\$30,000 to \$34,999	1,429	± 232	5	285.8
\$35,000 to \$39,999	1,592	± 225	5	318.4
\$40,000 to \$44,999	1,325	± 192	5	265.0
\$45,000 to \$49,999	1,048	± 168	5	209.6
\$50,000 to \$59,999	2,508	± 262	10	250.8
\$60,000 to \$74,999	3,321	± 359	15	221.4
\$75,000 to \$99,999	3,356	± 306	25	134.2
\$100,000 to \$124,999	2,043	± 249	25	81.7
\$125,000 to \$149,999	1,199	± 215	25	48.0
\$150,000 to \$199,999	1,109	± 180	50	22.2
\$200,000 or more	836	± 138	-	-

Source: 2011-2015 American Community Survey



Source: 2011-2015 American Community Survey

11.2 Median household income: Trends over time



Source: Small Area Income and Poverty Estimates (SAIPE)

12 Poverty

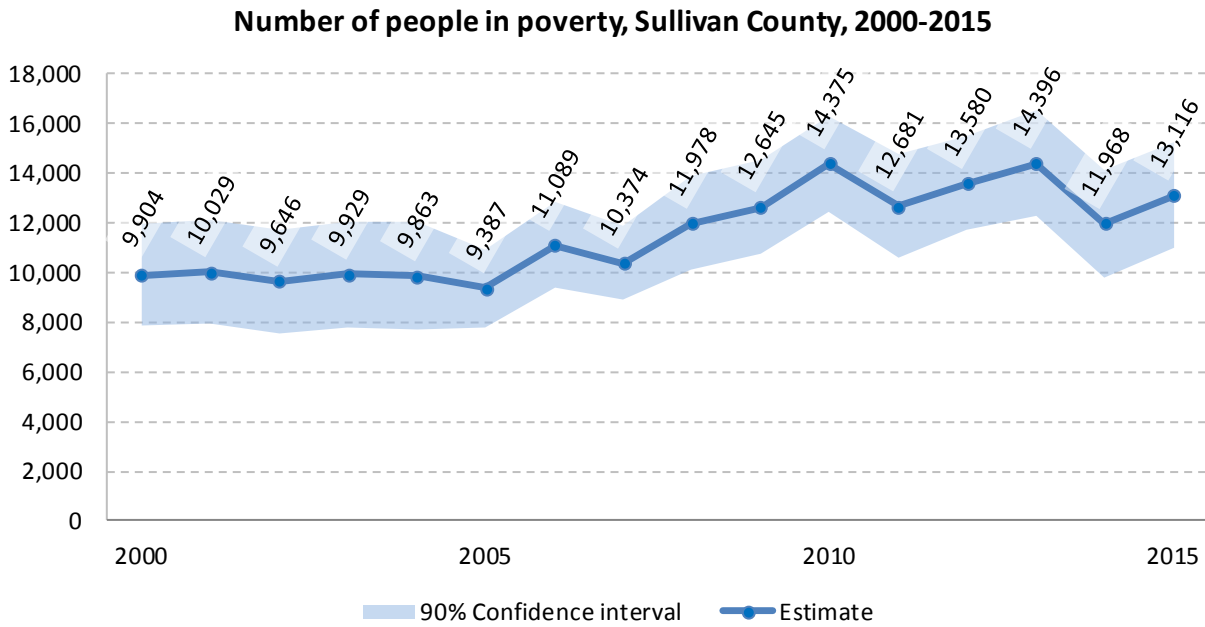
12.1 Family Income to Poverty Ratio

	TOTAL		PERCENT OF ALL	
	Estimate	Margin of error	Estimate	Margin of error
<b>All families</b>	17,832	± 607		
<b>ALL FAMILIES WITH INCOME:</b>				
Below 50 percent of poverty level	741	± 173	4.2%	± 1.0
<b>Below 100 percent of poverty level</b>	2,145	± 280	<b>12.0%</b>	<b>± 1.5</b>
Below 125 percent of poverty level	2,802	± 306	15.7%	± 1.6
Below 150 percent of poverty level	3,200	± 310	17.9%	± 1.6
Below 185 percent of poverty level	4,291	± 378	24.1%	± 2.0
Below 200 percent of poverty level	4,874	± 368	27.3%	± 1.8
Below 300 percent of poverty level	7,810	± 470	43.8%	± 2.2
Below 400 percent of poverty level	10,621	± 494	59.6%	± 1.9
Below 500 percent of poverty level	13,139	± 536	73.7%	± 1.7

Source: 2011-2015 American Community Survey

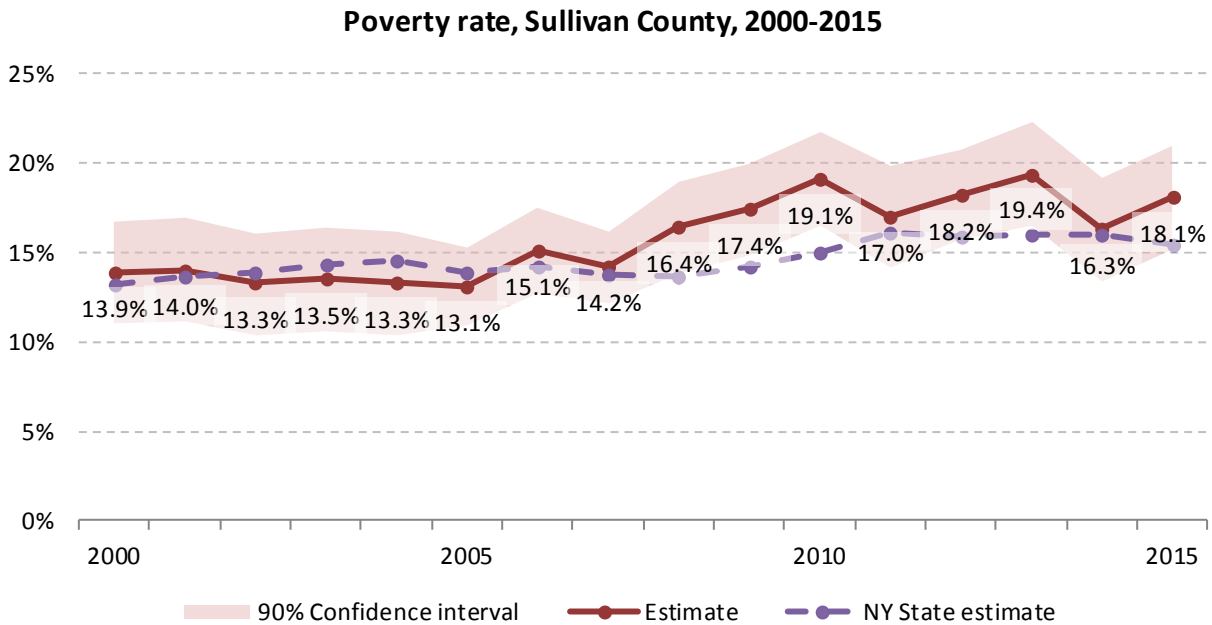


### 12.2 Poverty: Trends over time: Count



Source: Small Area Income and Poverty Estimates (SAIPE)

### 12.3 Poverty: Trends over time: Rate



Source: Small Area Income and Poverty Estimates (SAIPE)

## 12.4 Poverty characteristics

	TOTAL		BELOW POVERTY LEVEL		PERCENT BELOW POVERTY LEVEL	
	Estimate	Margin of error	Estimate	Margin of error	Estimate	Margin of error
<b>Population for whom poverty status is determined</b>	73,441	± 308	12,868	± 957	17.5%	± 1.3
<b>AGE</b>						
Under 18 years	16,195	± 164	4,148	± 484	25.6%	± 3.0
Under 5 years	4,257	± 76	1,156	± 205	27.2%	± 4.8
5 to 17 years	11,938	± 155	2,992	± 380	25.1%	± 3.2
18 to 34 years	14,381	± 249	2,854	± 406	19.8%	± 2.8
35 to 64 years	30,937	± 221	4,671	± 480	15.1%	± 1.5
65 years and over	11,928	± 124	1,195	± 206	10.0%	± 1.7
<b>SEX</b>						
Male	36,861	± 246	6,015	± 550	16.3%	± 1.5
Female	36,580	± 210	6,853	± 601	18.7%	± 1.6
<b>RACE AND HISPANIC OR LATINO ORIGIN</b>						
White alone	60,686	± 787	9,305	± 868	15.3%	± 1.4
Black or African American alone	5,578	± 338	1,789	± 364	32.1%	± 6.0
American Indian and Alaska Native alone	123	± 70	15	± 19	12.2%	± 16.2
Asian alone	1,205	± 90	173	± 128	14.4%	± 10.1
Hispanic or Latino origin (of any race)	10,501	± 154	2,936	± 496	28.0%	± 4.6
White alone, not Hispanic or Latino	54,974	± 249	7,615	± 780	13.9%	± 1.4
<b>EDUCATIONAL ATTAINMENT</b>						
<b>Population 25 years and over</b>	51,203	± 250	7,441	± 634	14.5%	± 1.2
Less than high school graduate	6,841	± 561	1,987	± 393	29.0%	± 4.7
High school graduate (includes equivalency)	17,396	± 770	2,473	± 338	14.2%	± 1.8
Some college, associate's degree	15,317	± 743	2,241	± 404	14.6%	± 2.4
Bachelor's degree or higher	11,649	± 691	740	± 194	6.4%	± 1.6
<b>EMPLOYMENT STATUS</b>						
<b>Civilian labor force 16 years and over</b>	36,341	± 656	3,523	± 490	9.7%	± 1.3
Employed	32,185	± 676	2,231	± 357	6.9%	± 1.1
Male	16,460	± 435	878	± 197	5.3%	± 1.2
Female	15,725	± 547	1,353	± 254	8.6%	± 1.6
Unemployed	4,156	± 478	1,292	± 275	31.1%	± 5.1
Male	2,323	± 324	701	± 187	30.2%	± 6.9
Female	1,833	± 322	591	± 193	32.2%	± 8.4
<b>WORK EXPERIENCE IN THE PAST 12 MONTHS</b>						
<b>Population 16 years and over</b>	15,725	± 547	1,353	± 254	8.6%	± 1.6
Worked full-time, year-round	4,156	± 478	1,292	± 275	31.1%	± 5.1
Worked part-time or part-year	2,323	± 324	701	± 187	30.2%	± 6.9
Did not work	1,833	± 322	591	± 193	32.2%	± 8.4

Source: 2011-2015 American Community Survey

## 13 Glossary

**American Community Survey (ACS)** - The American Community Survey is an ongoing survey of the population that provides data every year on a variety of social and economic characteristics—age, sex, race, family and relationships, income and benefits, health insurance, education, veteran status, disabilities, where you work and how you get there, where you live and how much you pay for some essentials. The ACS replaced the information previously gathered by what was known as the “long form” of the decennial censuses. The ACS provides communities, companies and other institutions with current information they need to plan investments and services. Information from the survey generates data that help determine how more than \$400 billion in federal and state funds are distributed each year. Every estimate presented in the American Community Survey, as in other surveys, has an uncertainty associated with it. Often the magnitude of that uncertainty is expressed as the Margin of Error.

**Confidence Interval (CI)** - indication of the degree of uncertainty about a sample estimates. Confidence intervals have been traditionally reported at the 90, 95 and 99 percent levels. A 90 percent confidence interval can be interpreted, for example, roughly as providing 90 percent certainty that the interval defined by the upper and lower bounds contain the true value of the characteristic. If a Margin of Error is given, the lower bound of the confidence interval is equal to the estimate minus the Margin of Error and the upper bound is equal to the estimate plus the Margin of Error. (See further, Margin of Error definition below.)

**County subdivision or Minor Civil Division (MCD)** - The Census Bureau geography for primary administrative units below the county level in New York is collectively referred to as county subdivisions or minor civil divisions. These include towns, cities and Indian Reservations.

**Decennial Census** - the Census of the population and housing taken every 10 years in the United States, at the start of each decade, since 1790.

**Employed** – either “at work” or “with a job, but not at work”.

**Group Quarters Population** - all U.S. residents who live in group living facilities including correctional institutions, juvenile facilities, skilled nursing facilities, college residence halls, military barracks, group homes, and workers' dormitories.

**Household Population** - all U.S. residents who live in housing units such as single family homes, townhouses, apartments, and mobile homes.

**Intercensal Population Estimates** - estimates produced for the years between two decennial censuses when both the beginning and ending populations are known. They are produced once a decade by adjusting the existing time series of postcensal estimates for the entire decade to smooth the transition from one decennial census count to the next. They differ from the postcensal estimates that are released annually because the difference between the April 1 postcensal estimate and April 1 census count for the end of the decade is redistributed across the estimates for that decade. For dates when both postcensal and intercensal estimates are available, intercensal estimates are preferred.

**Labor Force** - consists of people classified as employed or unemployed.

**Margin of Error (MOE)** - a measure of the precision of an estimate at a given level of confidence. The confidence level of a margin of error indicates the likelihood that the difference between the population value (which you

would get if you could measure the whole population instead of a sample) and the estimate is less than or equal to the margin of error. The range from the estimate minus the margin of error to the estimate plus the margin of error is called the confidence interval. All ACS estimates are published with their margins of error at the 90 percent confidence level. Margins of error are useful in assessing the reliability of estimates and whether differences between estimates are significant.

**Numeric Population Change** - difference between the population of an area at the beginning and end of a time period. It is computed by taking the difference between the population at one point in time ( $t_1$ ) and some future time ( $t_2$ ).

**Percent Population Change** - difference between the population of an area at the beginning and end of a time period, expressed as a percentage of the beginning population. It is computed by dividing the population change ( $t_2 - t_1$ ) by  $t_1$  and multiplying the result by 100.

**Population Estimates** - The calculated number of people living in an area as of a specified point in time, usually July 1st. The estimated population is calculated using a component of change model that incorporates information on natural increase (births, deaths) and net migration (net domestic migration, net international migration) that has occurred in an area since the latest decennial census. A procedure for estimating the current population using a procedure involving a "base population" value at time  $t - 1$ , adding to that the births during the interval  $t - 1$  to  $t$ , subtracting the deaths during that interval  $t - 1$  to  $t$ , and then adding the net domestic and net international migration that occurred during that interval.

**Population Density** - Total number of people per areal unit like a square mile or square kilometer.

**Population Pyramids** - A graphical way of portraying a population's age and sex composition at a given slice in time. The first horizontal bar, constituting the base of the graph, is the youngest age group (typically 0-4) with the number of males in that age group on the left and the number of females in that age group on the right. On top of that age group is another horizontal bar for the next age group (e.g. 5-9) and so forth with the top bar typically for those aged 75 and over. In a population with lots of births and deaths, the shape typically forms a pyramid with a broad base and a narrow top. It is one of the most basic ways to understand population change over time as well as between different geographic units of a similar status (e.g. counties).

**Postcensal Estimates** - estimates produced for the years after a decennial census when only the beginning population is known. They are produced and revised each year, targeted to July 1 of that year.

**Projection** - estimated population at some future time based on assumptions about births, deaths, migration, and ages.

**Race/Ethnicity** - the Census Bureau collects racial data in accordance with guidelines provided by the U.S. Office of Management and Budget (OMB), and these data are based on self-identification. The racial categories included in the census questionnaire generally reflect a social definition of race recognized in this country and not an attempt to define race biologically, anthropologically, or genetically. In addition, it is recognized that the categories of the race item include racial and national origin or sociocultural groups. People may choose to report more than one race to indicate their racial mixture, such as "American Indian" and "White." People who identify their origin as Hispanic, Latino, or Spanish may be of any race. OMB requires five minimum categories: White, Black or African American, American Indian or Alaska Native, Asian, and Native Hawaiian or Other Pacific Islander. Hispanics may be classified as white or black. So we generally separate them out as an ethnic group first.

**Unemployed** – Not employed, but actively looking for work and available to accept a job.

**Unemployment rate** – Fraction of the Labor Force that is unemployed.

**Urban Area** – A densely settled area with at least 2,500 people. If the total number of people is less than 50,000 the Census Bureau calls it an Urban Cluster, otherwise an Urbanized Area.

**Vintage** - each year, the U.S. Census Bureau produces and publishes estimates of the population for each state and county, as well as the nation as a whole. These are called “vintages.” In producing these vintages, the Bureau utilizes administrative data from a number of sources to estimate 1) the change in population since the most recent decennial census, and 2) the population for each year since the most recent decennial census. With each annual release of population estimates (vintage), the entire time series of estimates beginning on April 1, 2010 is revised and updated.

**Vital Statistics** - quantitative data concerning a population, such as the number of births, marriages, and deaths.

## 14 References

Sullivan County homepage: <http://www.co.sullivan.ny.us/>

At Cornell:

- Program on Applied Demographics (PAD)  
URL: <http://pad.human.cornell.edu/>
  - More county trends: <https://pad.human.cornell.edu/counties/trends1geo.cfm?geo=105>
- Community and Regional Development Institute (CaRDI)  
URL: <https://cardi.cals.cornell.edu/>
- Cornell Cooperative Extensions (CCE)  
Home page: <http://www.cce.cornell.edu>
  - Sullivan local office: <http://sullivancce.org/>

Data sources and background information:

- New York State Data Center
  - <https://labor.ny.gov/nys-data-center/index.shtm>
- U.S. Census Bureau - general
  - QuickFacts: <https://www.census.gov/quickfacts/table/PST045216/36,36105>
  - American FactFinder: <http://factfinder.census.gov/>
- U.S. Census Bureau - population
  - Decennial Census
    - Background: <https://www.census.gov/2010census/>
    - Demographic Profile: [http://factfinder2.census.gov/bkmk/table/1.0/en/DEC/10\\_SF1/SF1DP1/0500000US36105](http://factfinder2.census.gov/bkmk/table/1.0/en/DEC/10_SF1/SF1DP1/0500000US36105)
  - American Community Survey (ACS)
    - Background: <https://www.census.gov/programs-surveys/acs/>
    - Social Data Profile: [http://factfinder2.census.gov/bkmk/table/1.0/en/ACS/15\\_5YR/DP02/0500000US36105](http://factfinder2.census.gov/bkmk/table/1.0/en/ACS/15_5YR/DP02/0500000US36105)
    - Economic Data Profile: [http://factfinder2.census.gov/bkmk/table/1.0/en/ACS/15\\_5YR/DP03/0500000US36105](http://factfinder2.census.gov/bkmk/table/1.0/en/ACS/15_5YR/DP03/0500000US36105)
    - Housing Data Profile: [http://factfinder2.census.gov/bkmk/table/1.0/en/ACS/15\\_5YR/DP04/0500000US36105](http://factfinder2.census.gov/bkmk/table/1.0/en/ACS/15_5YR/DP04/0500000US36105)
    - Demographics Data Profile: [http://factfinder2.census.gov/bkmk/table/1.0/en/ACS/15\\_5YR/DP05/0500000US36105](http://factfinder2.census.gov/bkmk/table/1.0/en/ACS/15_5YR/DP05/0500000US36105)
  - Population estimates:
    - General: <https://www.census.gov/programs-surveys/popest.html>
    - Explorer: <https://www.census.gov/censusexplorer/censusexplorer-popest.html>
- U.S. Census Bureau – Small Area Income & Poverty Estimates (SAIPE)
  - <http://www.census.gov/did/www/saipe/>
- U.S. Census Bureau - Public Use Quarterly Workforce Indicators (QWI) – annual averages
  - <https://qwiexplorer.ces.census.gov/static/explore.html>
- U.S. Census Bureau – Building Permits Survey
  - <https://www.census.gov/construction/bps/>

- Bureau Labor Statistics (BLS)
  - Local Area Unemployment Statistics: <http://www.bls.gov/lau/>
  - Quarterly Census of Employment and Wages (QCEW): <https://www.bls.gov/cew/data.htm>
- NY Department of Labor -
  - Labor statistics: <https://labor.ny.gov/stats/index.shtm>
  - Quarterly Census of Employment and Wages (QCEW): <https://labor.ny.gov/stats/LSQCEW.shtm>
- NY State Department of Health
  - Vital Statistics: [https://www.health.ny.gov/statistics/vital\\_statistics/](https://www.health.ny.gov/statistics/vital_statistics/)
- Bureau of Economic Analysis (BEA) – Local Area Personal Income and Employment: <http://bea.gov/iTable/iTable.cfm?ReqID=70&step=1>

Alternative sites for data retrieval:

- The Nelson A. Rockefeller Institute of Government – New York State Statistical Yearbooks [http://www.rockinst.org/nys\\_statistics/](http://www.rockinst.org/nys_statistics/)
- Headwaters Economics: Economic Profile System – Human Dimensions Toolkit <http://headwaterseconomics.org/tools/eps-hdt>
- National Historical Geographic Information System (NHGIS) <https://www.nhgis.org/>
- Social Explorer <http://www.socialexplorer.com/pub/home/home.aspx>
- Stats America <http://www.statsamerica.org/Default.aspx>
- Missouri Census Data Center <http://mcdc.missouri.edu/>
- DataFerret <http://dataferrett.census.gov/>
- Investigative Reporters and Editors (IRE) Census project <http://census.ire.org/>