

Westchester County Profile 2017

A collection of recent demographic, social and economic data

Compiled by

Jan Vink

Cornell Program on Applied Demographics



Cornell University



Program
on Applied
Demographics
CORNELL POPULATION CENTER

This profile is a part of a set of profiles generated for each county in New York State. The profiles were developed and generated by the Cornell Program on Applied Demographics. The work is sponsored by the New York State Data Center in the New York State Department of Labor.

Cornell Program on Applied Demographics:

The Program on Applied Demographics (PAD) brings skills in demographics, economics, statistics, data gathering and data analysis together to provide a variety of organizations with data, information and advice. PAD is located in the Department of Policy Analysis and Management within the College of Human Ecology at Cornell University. PAD is also affiliated with the Cornell Institute for Social and Economic Research and the Cornell Population Center.

For more information: <http://pad.human.cornell.edu/>

New York State Data Center:

The New York State Data Center (NYSDC) is located in the Division of Research and Statistics within the New York State Department of Labor. The State Data Center operates as part of a nationwide effort to improve public access to data provided by the U.S. Census Bureau. The U.S. Census Bureau collects and tabulates data on a multitude of subjects such as population, social, economic and housing demographics, labor force data, health care, migration and transportation. These data play a critical role in understanding our local and larger surrounding communities. Census data also influence state and federal funding, aid decision making in the legislative process, and determine each state's number of congressional seats. As the lead agency in New York for the SDC program, the New York State Data Center helps users navigate through the multitude of surveys and products provided by the U.S. Census Bureau.

For more information: <https://labor.ny.gov/nys-data-center/>

All profiles are freely downloadable as PDF documents on the PAD website:

<http://pad.human.cornell.edu/profiles/index.cfm>

This profile is an update from the County Profile produced in 2013. The 2013 profile also contained information on agriculture related items and can be found at <https://pad.human.cornell.edu/profiles/2013/Westchester.pdf>

Contents

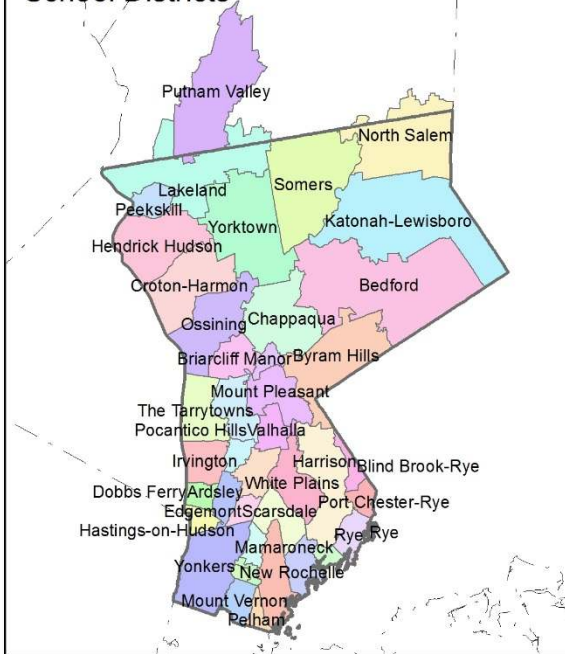
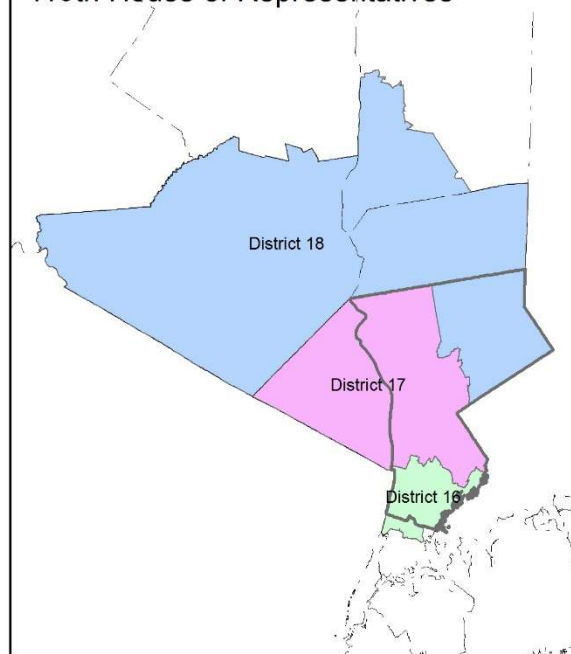
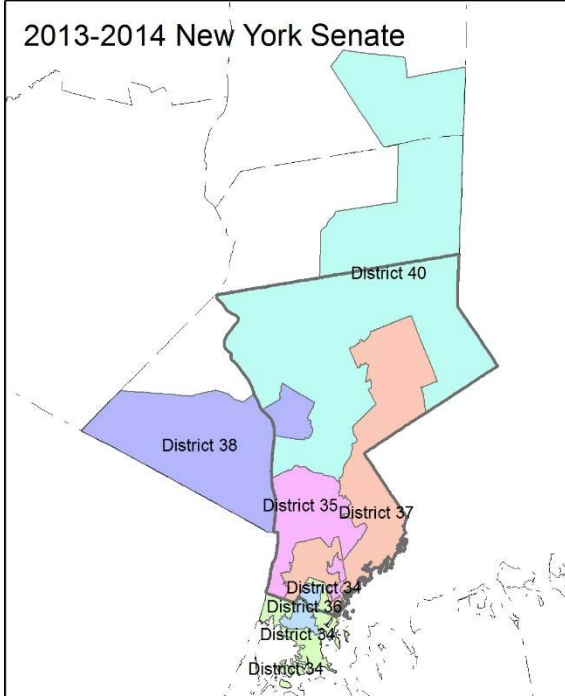
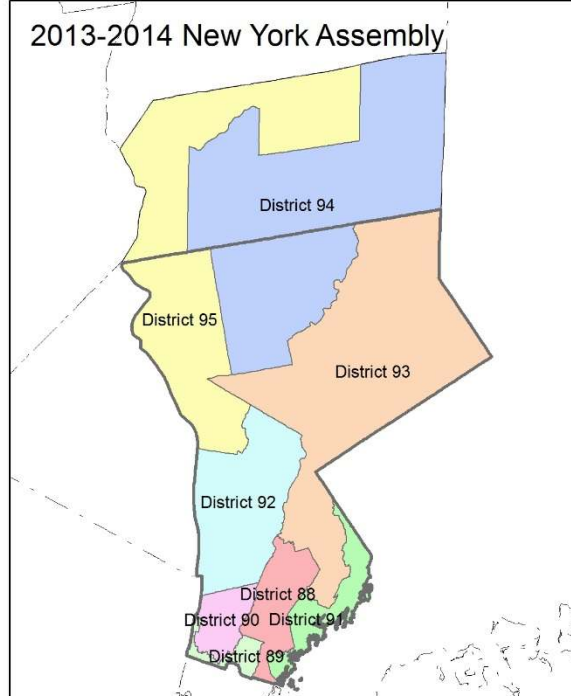
1	Reference Maps (towns and places as defined in 2010)	3
2	Population density and Urban Areas Map	5
3	Total Population	6
3.1	Historic and projected	6
3.2	Change since previous Census	6
3.3	Annual population estimates	7
3.4	Sub County population change 2010-2015	8
3.5	Sub County population change 2010-2015	9
4	Components of population change	10
4.1	Vital Statistics	10
4.2	Migration	11
5	Population by age	12
5.1	Historic and projected population pyramids	12
5.2	Selected age groups	13
5.3	Median age	14
6	Race	15
6.1	Total and household population by race	15
6.2	Race composition by age	15
7	Housing units	16
7.1	Characteristics	16
7.2	Historical data on number of housing units and occupancy status	17
7.3	Building Permits 2000-2015	17
8	Education	18
8.1	Enrollment by level of school	18
8.2	Enrollment by age	18
8.3	Percentage age 18-24 enrolled in college	18
8.4	Educational attainment	19
9	Language spoken at home	19
10	Labor Force Characteristics	20
10.1	Labor force, employment and unemployment	20
10.2	Annual unemployment rate	21
10.3	Employment and number of jobs	21
10.4	Class of worker	22
11	Household Income	23
11.1	Income Distribution	23
11.2	Median household income: Trends over time	24
12	Poverty	24
12.1	Family Income to Poverty Ratio	24
12.2	Poverty: Trends over time: Count	25
12.3	Poverty: Trends over time: Rate	25
12.4	Poverty characteristics	26
13	Glossary	27
14	References	30

1 Reference Maps (towns and places as defined in 2010)

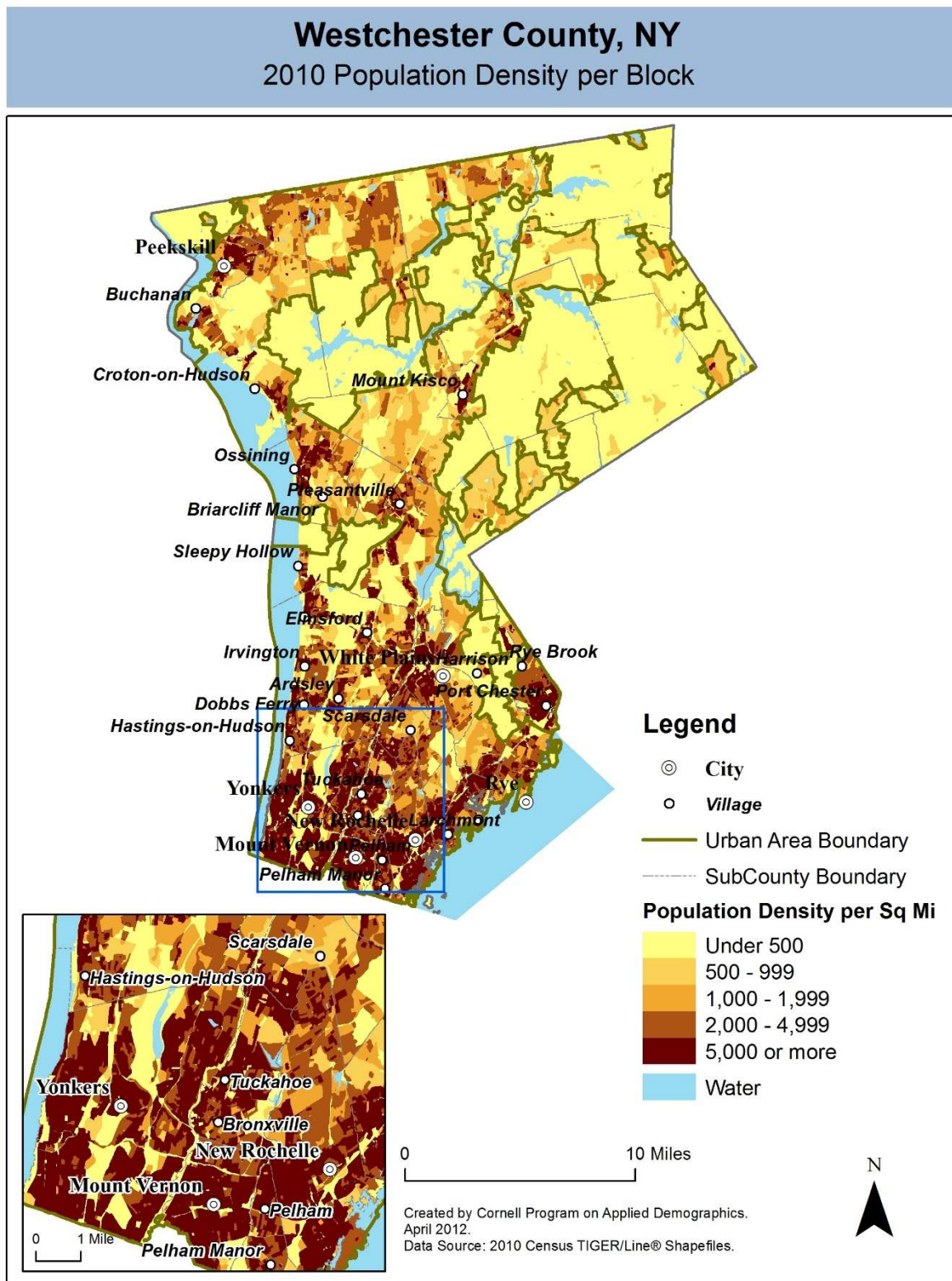


Westchester County, NY

Overlap with School and Political Districts

School Districts**113th House of Representatives****2013-2014 New York Senate****2013-2014 New York Assembly**

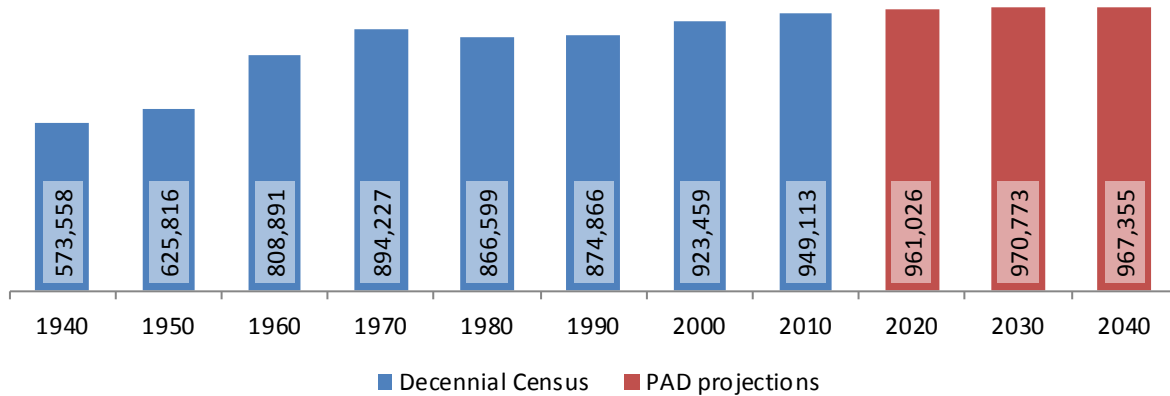
2 Population density and Urban Areas Map



3 Total Population

3.1 Historic and projected

Total population, Westchester County, 1940-2040



Source: 1940-2010 Decennial Census and projections by Cornell Program on Applied Demographics

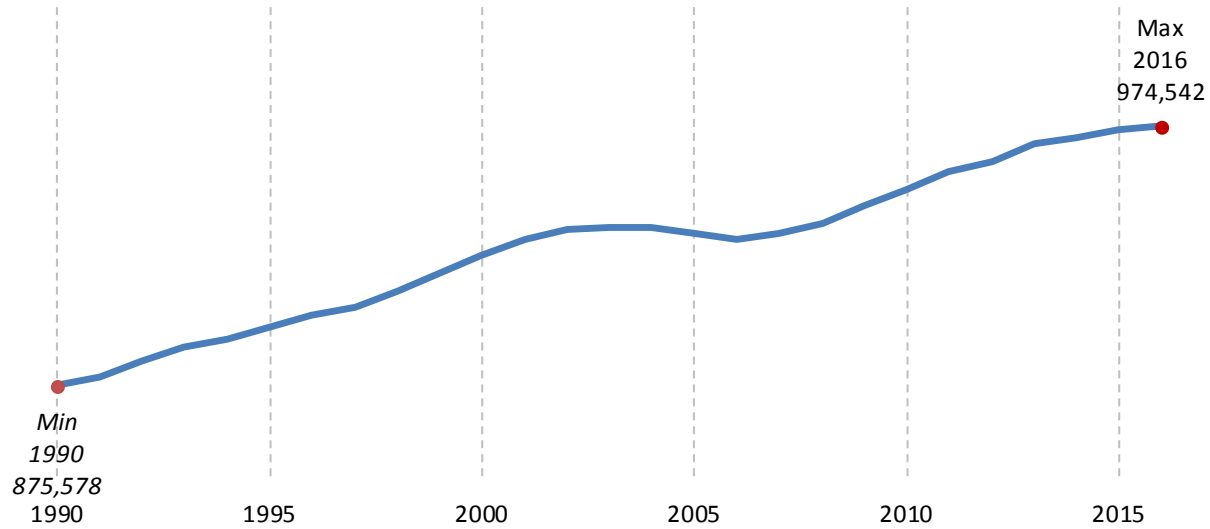
3.2 Change since previous Census

		Total population	Change	
			Number	Percent
Decennial Census	1940	573,558		
	1950	625,816	52,258	9.1%
	1960	808,891	183,075	29.3%
	1970	894,227	85,336	10.5%
	1980	866,599	-27,628	-3.1%
	1990	874,866	8,267	1.0%
	2000	923,459	48,593	5.6%
	2010	949,113	25,654	2.8%
PAD projec- tions	2020	961,026	11,913	1.3%
	2030	970,773	9,747	1.0%
	2040	967,355	-3,418	-0.4%

Source: 1940-2010 Decennial Census and projections by Cornell Program on Applied Demographics

3.3 Annual population estimates

**Annual population estimates
Westchester County, 1990-2016**



Source: U.S. Census Bureau population estimates (1990-1999 and 2000-2009 intercensal and vintage 2016 postcensal)

3.4 Sub County population change 2010-2015

	Total Population		Difference	
	2000	2010	Count	%
New York State	18,976,821 *	19,378,102	401,281	2.1%
Westchester County	923,459	949,113	25,654	2.8%
Cities				
Mount Vernon	68,381	67,292	-1,089	-1.6%
New Rochelle	72,182	77,062	4,880	6.8%
Peekskill	22,441	23,583	1,142	5.1%
Rye	14,955	15,720	765	5.1%
White Plains	53,077	56,853	3,776	7.1%
Yonkers	196,019 *	195,976	-43	0.0%
Towns				
Bedford	18,133	17,335	-798	-4.4%
Cortlandt	38,467	41,592	3,125	8.1%
Eastchester	31,318	32,363	1,045	3.3%
Greenburgh	86,831 *	88,400	1,569	1.8%
Harrison	24,154	27,472	3,318	13.7%
Lewisboro	12,324	12,411	87	0.7%
Mamaroneck	28,967	29,156	189	0.7%
Mount Kisco	9,983	10,877	894	9.0%
Mount Pleasant	43,221	43,724	503	1.2%
New Castle	17,491	17,569	78	0.4%
North Castle	10,849	11,841	992	9.1%
North Salem	5,173	5,104	-69	-1.3%
Ossining	36,534	37,674	1,140	3.1%
Pelham	11,866	12,396	530	4.5%
Pound Ridge	4,726	5,104	378	8.0%
Rye	43,880	45,928	2,048	4.7%
Scarsdale	17,823	17,166	-657	-3.7%
Somers	18,346	20,434	2,088	11.4%
Yor	36,318	36,081	-237	-0.7%

* Original counts revised through Count Question Resolution Program (CQR)

Source: U.S. Census Bureau intercensal population estimates 2000-2010

3.5 Sub County population change 2010-2015

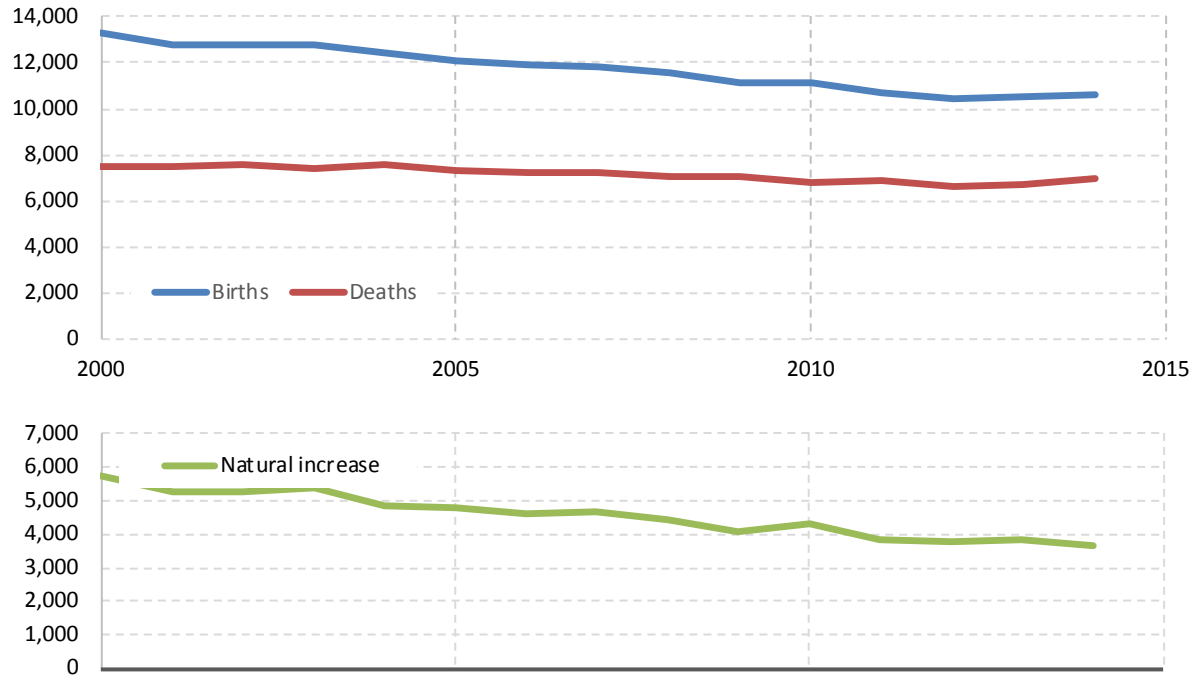
	Total Population		Difference	
	2010 base	2015	Count	%
New York State	19,378,087	19,795,791	417,704	2.2%
Westchester County	949,092	976,396	27,304	2.9%
Cities				
Mount Vernon	67,290	68,628	1,338	2.0%
New Rochelle	77,061	79,846	2,785	3.6%
Peekskill	23,583	24,043	460	2.0%
Rye	15,720	16,046	326	2.1%
White Plains	56,853	58,459	1,606	2.8%
Yonkers	195,979	201,116	5,137	2.6%
Towns				
Bedford	17,335	17,946	611	3.5%
Cortlandt	41,592	42,771	1,179	2.8%
Eastchester	32,363	33,135	772	2.4%
Greenburgh	88,400	92,029	3,629	4.1%
Harrison	27,471	28,348	877	3.2%
Lewisboro	12,411	12,789	378	3.0%
Mamaroneck	29,156	29,957	801	2.7%
Mount Kisco	10,877	11,145	268	2.5%
Mount Pleasant	43,727	44,890	1,163	2.7%
New Castle	17,547	18,067	520	3.0%
North Castle	11,860	12,304	444	3.7%
North Salem	5,104	5,205	101	2.0%
Ossining	37,674	38,384	710	1.9%
Pelham	12,396	12,642	246	2.0%
Pound Ridge	5,104	5,248	144	2.8%
Rye	45,908	47,023	1,115	2.4%
Scarsdale	17,166	17,885	719	4.2%
Somers	20,434	21,397	963	4.7%
Yor	36,081	37,093	1,012	2.8%

Source: U.S. Census Bureau population estimates 2010-2015

4 Components of population change

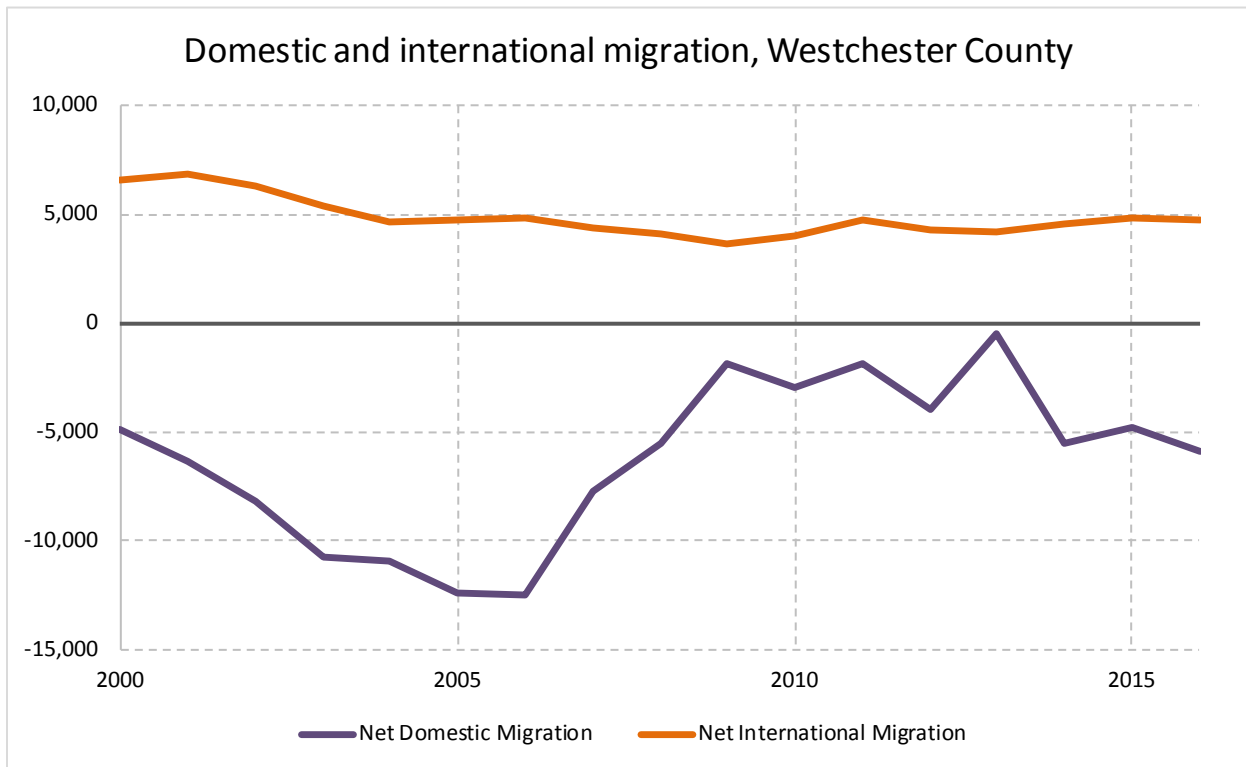
4.1 Vital Statistics

Vital Statistics, Westchester County



Source: New York State Department of Health

4.2 Migration

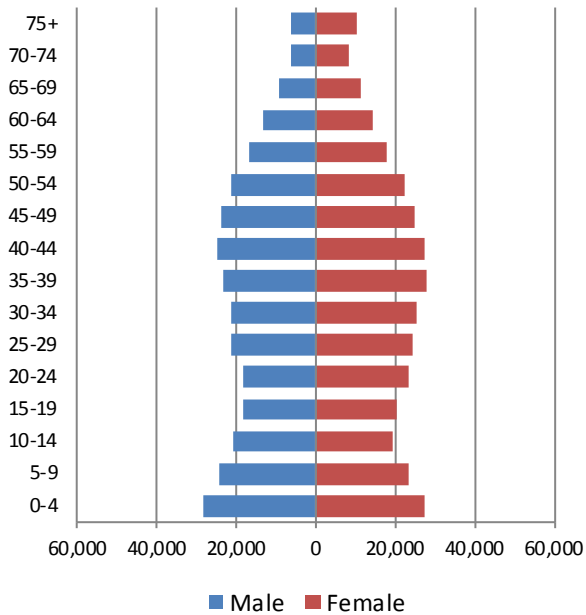


Source: Census Bureau population estimates (V2010 and V2016)

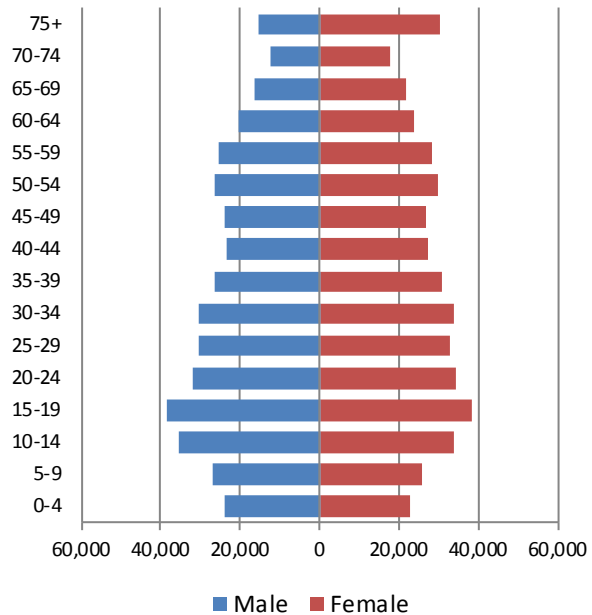
5 Population by age

5.1 Historic and projected population pyramids

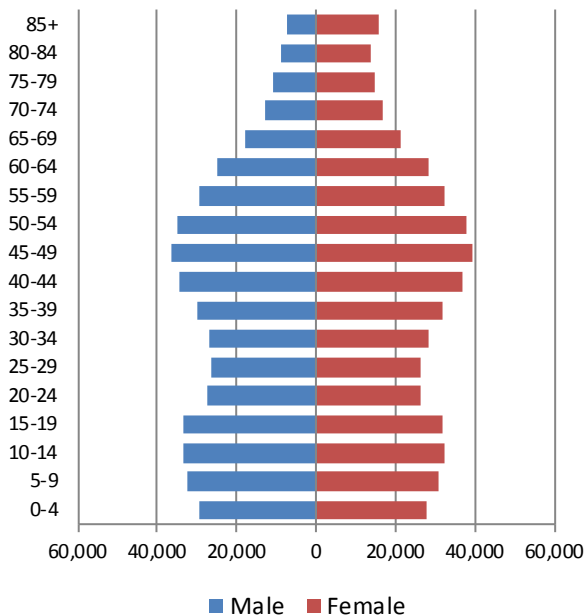
**1950 Population Pyramid,
Westchester County**



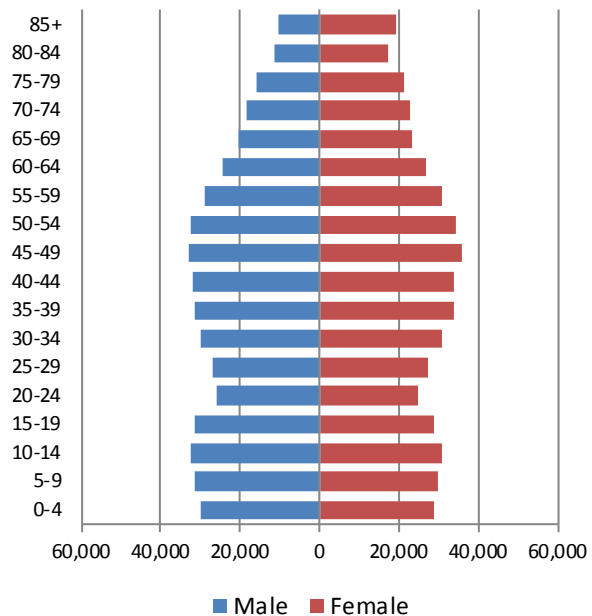
**1980 Population Pyramid,
Westchester County**



**2010 Population Pyramid,
Westchester County**



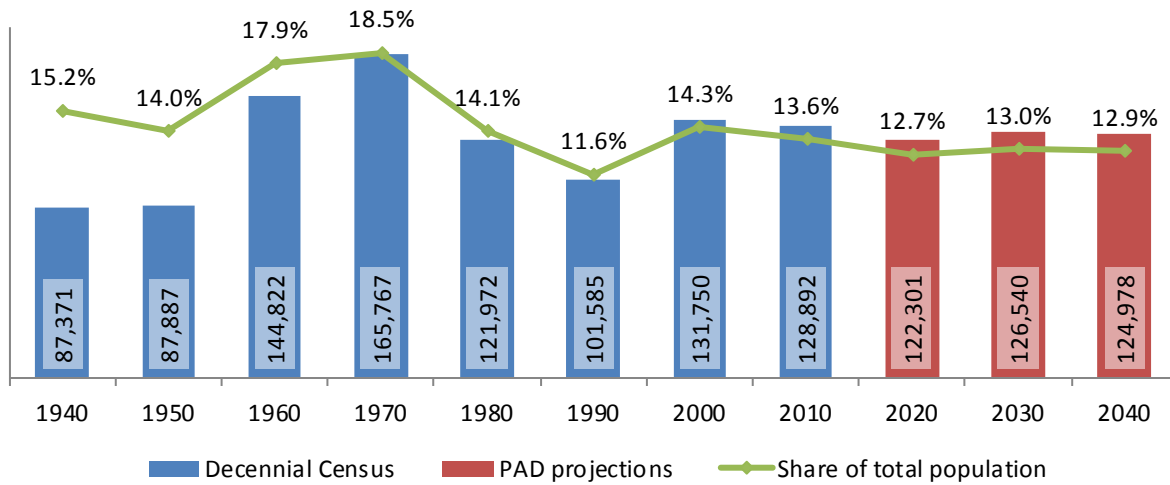
**2040 Population Pyramid,
Westchester County**



Source: 1950, 1980, 2010 Decennial Census and projections by Cornell Program on Applied Demographics

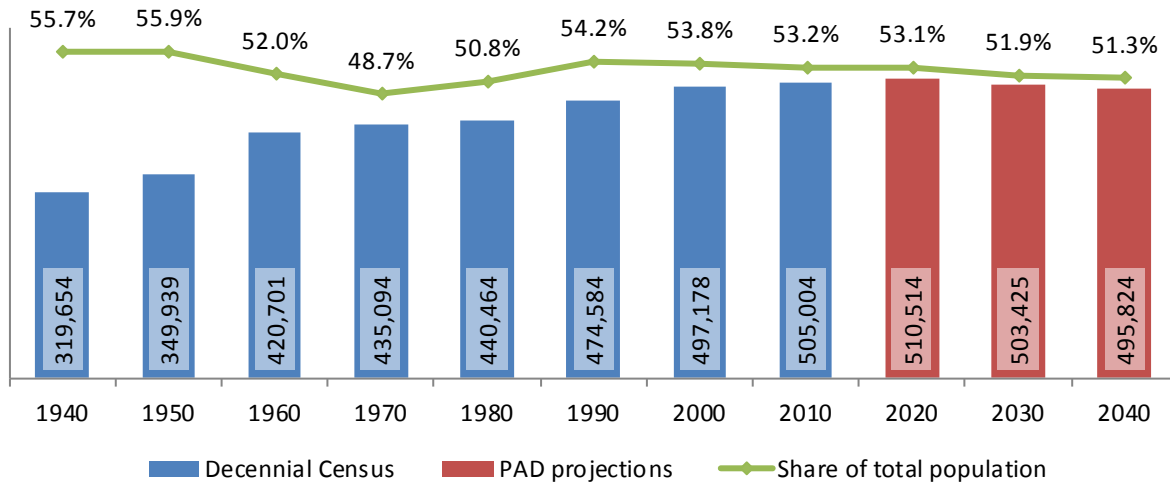
5.2 Selected age groups

Population age 5-14, Westchester County, 1940-2040



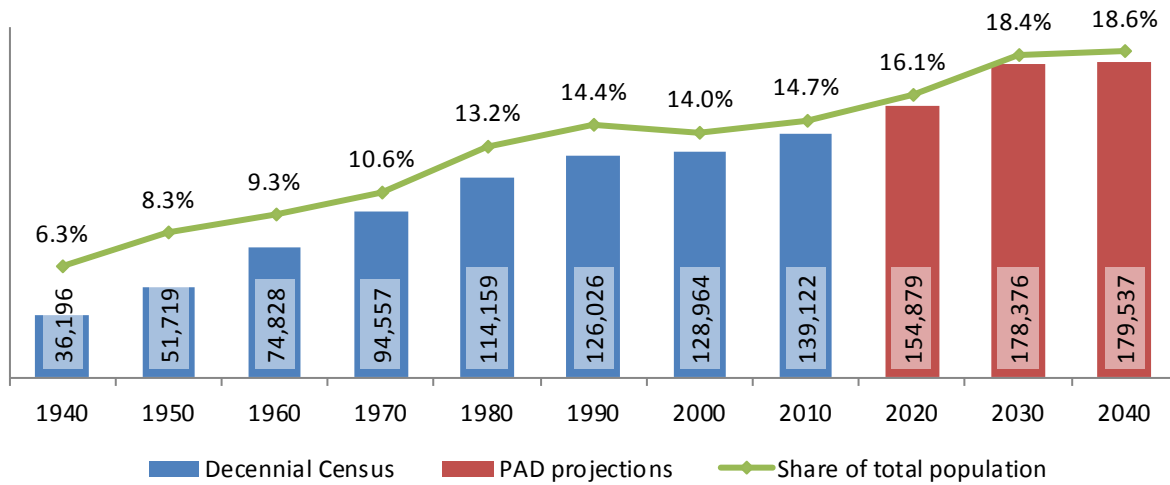
Source: 1940-2010 Decennial Census and projections by Cornell Program on Applied Demographics

Population age 25-64, Westchester County, 1940-2040



Source: 1940-2010 Decennial Census and projections by Cornell Program on Applied Demographics

Population age 65 and over, Westchester County, 1940-2040



Source: 1940-2010 Decennial Census and projections by Cornell Program on Applied Demographics

5.3 Median age

	Westchester County	New York State
Median age		
2000	37.6	35.9
2010	40.0	38.0
2015	40.5	38.3

Source: 2000, 2010 Decennial Census, 2015 Population Estimates

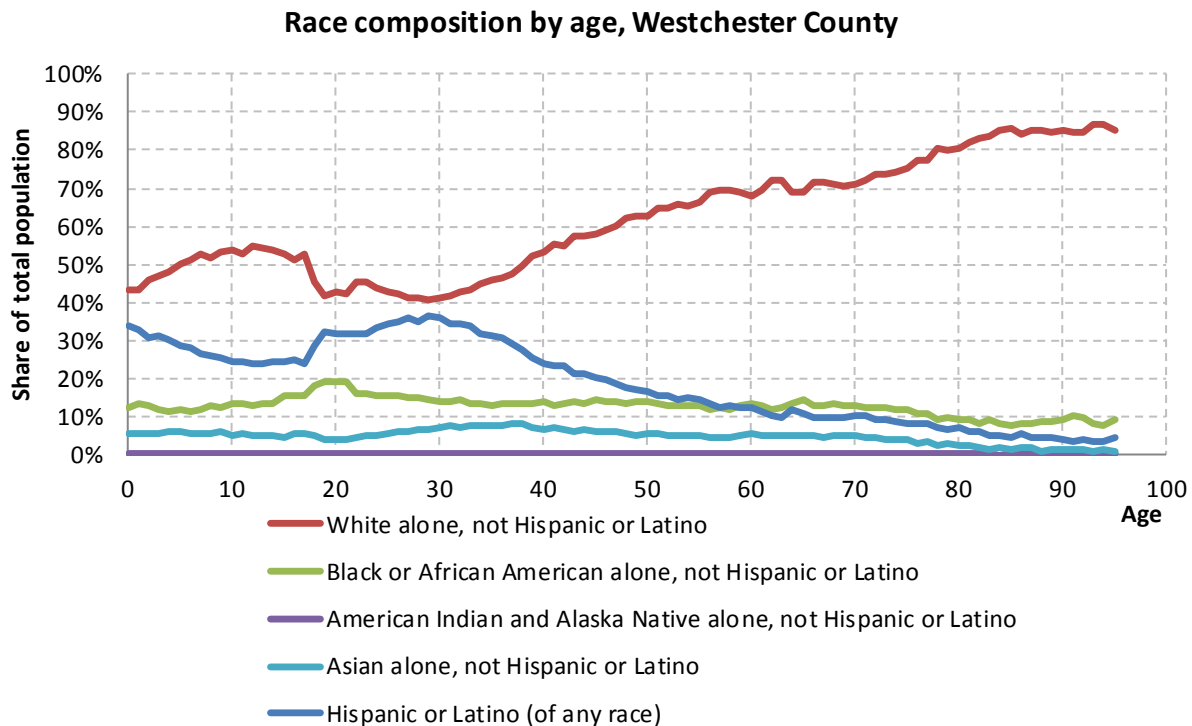
6 Race

6.1 Total and household population by race

	Total		In households		In Group Quarters
	Count	Percentage	Count	Percentage	Count
Total population	949,113	100%	920,409	100%	28,704
Not Hispanic or Latino					
One race					
White	544,563	57.4%	529,241	57.5%	15,322
Black or African American	126,585	13.3%	119,225	13.0%	7,360
American Indian and Alaska Native	1,141	0.1%	1,103	0.1%	38
Asian	51,123	5.4%	50,076	5.4%	1,047
Native Hawaiian and Other Pacific Islander	218	0.0%	197	0.0%	21
Some other race	3,757	0.4%	3,663	0.4%	94
Two or more races	14,694	1.5%	14,282	1.6%	412
Hispanic or Latino (of any race)	207,032	21.8%	202,622	22.0%	4,410

Source: 2010 Decennial Census

6.2 Race composition by age



Source: 2010 Decennial Census

7 Housing units

7.1 Characteristics

	COUNT		PERCENTAGE	
	Estimate	Margin of error	Estimate	Margin of error
HOUSING OCCUPANCY				
Total housing units	370,032	± 665	100.0%	
Occupied housing units	341,866	± 1,465	92.4%	± 0.4
Vacant housing units	28,166	± 1,378	7.6%	± 0.4
YEAR STRUCTURE BUILT				
Total housing units	370,032	± 665	100.0%	
Built 2014 or later	130	± 68	0.0%	± 0.1
Built 2010 to 2013	1,932	± 281	0.5%	± 0.1
Built 2000 to 2009	19,581	± 829	5.3%	± 0.2
Built 1990 to 1999	18,007	± 812	4.9%	± 0.2
Built 1980 to 1989	28,132	± 1,023	7.6%	± 0.3
Built 1970 to 1979	34,306	± 1,224	9.3%	± 0.3
Built 1960 to 1969	51,922	± 1,217	14.0%	± 0.3
Built 1950 to 1959	71,026	± 1,806	19.2%	± 0.5
Built 1940 to 1949	30,112	± 1,058	8.1%	± 0.3
Built 1939 or earlier	114,884	± 1,973	31.0%	± 0.5
HOUSING TENURE				
Occupied housing units	341,866	± 1,465	100.0%	
Owner-occupied	210,195	± 1,820	61.5%	± 0.5
Renter-occupied	131,671	± 1,921	38.5%	± 0.5
HOUSE HEATING FUEL				
Occupied housing units	341,866	± 1,465	100.0%	
Utility gas	156,327	± 1,974	45.7%	± 0.5
Bottled, tank, or LP gas	5,986	± 509	1.8%	± 0.1
Electricity	36,096	± 1,154	10.6%	± 0.3
Fuel oil, kerosene, etc.	138,600	± 2,004	40.5%	± 0.6
Coal or coke	383	± 157	0.1%	± 0.1
Wood	1,142	± 211	0.3%	± 0.1
Solar energy	68	± 50	0.0%	± 0.1
Other fuel	2,027	± 262	0.6%	± 0.1
No fuel used	1,237	± 236	0.4%	± 0.1
VALUE				
Owner-occupied units	210,195	± 1,820	100.0%	
Less than \$50,000	3,810	± 346	1.8%	± 0.2
\$50,000 to \$99,999	4,864	± 395	2.3%	± 0.2
\$100,000 to \$149,999	7,035	± 482	3.3%	± 0.2
\$150,000 to \$199,999	9,043	± 663	4.3%	± 0.3
\$200,000 to \$299,999	18,999	± 812	9.0%	± 0.4
\$300,000 to \$499,999	59,806	± 1,260	28.5%	± 0.5
\$500,000 to \$999,999	80,255	± 1,358	38.2%	± 0.6
\$1,000,000 or more	26,383	± 781	12.6%	± 0.4
Median (dollars)	506,900	± 5,215		

Source: 2011-2015 American Community Survey

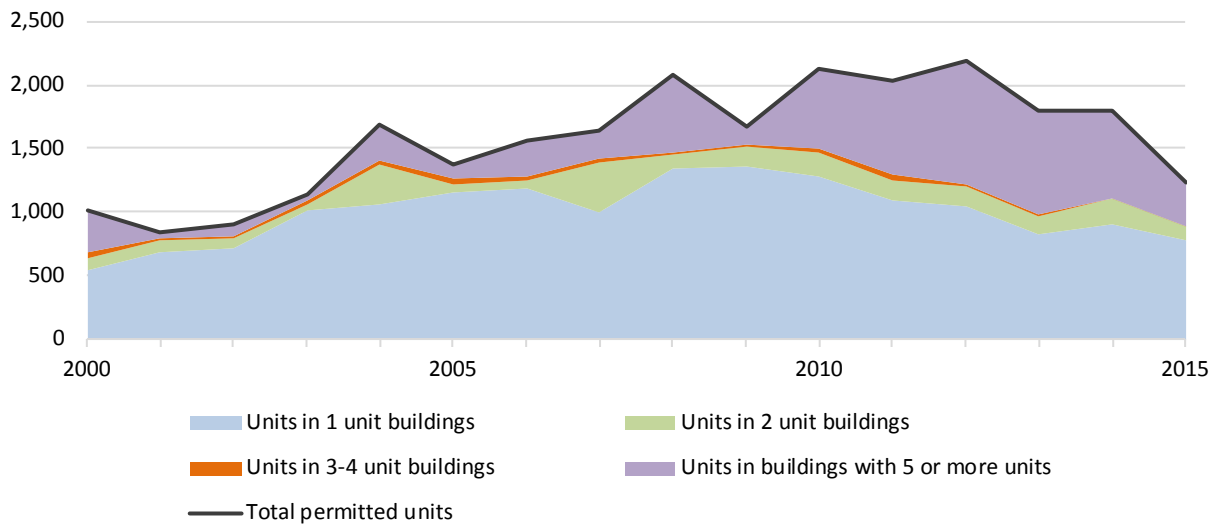
7.2 Historical data on number of housing units and occupancy status

Year	Number of Housing Units	Change since previous Census	Occupied	Occupancy rate	Vacant
1970	291,459		282,629	97.0%	8,830
1980	316,658	8.6%	307,450	97.1%	9,208
1990	336,727	6.3%	320,030	95.0%	16,697
2000	349,445	3.8%	337,142	96.5%	12,303
2010	370,821	6.1%	347,232	93.6%	23,589

Source: 1970-2010 Decennial Census

7.3 Building Permits 2000-2015

Building permits by number of permitted units in building,
Westchester County



Source: Census Bureau Building Permits Survey

8 Education

8.1 Enrollment by level of school

	Estimate	Margin of error
Total enrolled in school	256,165	± 1,722
Nursery school, preschool	17,644	± 815
Kindergarten to 12th grade	170,170	± 871
Kindergarten	12,288	± 683
Elementary: grade 1 to grade 4	49,093	± 943
Elementary: grade 5 to grade 8	52,039	± 1,064
High school: grade 9 to grade 12	56,750	± 899
College, undergraduate	53,316	± 1,293
Graduate, professional school	15,035	± 909

Source: 2011-2015 American Community Survey

8.2 Enrollment by age

	Estimate	Margin of error
3 and 4 years	65.8%	± 2.4
5 to 9 years	97.5%	± 0.5
10 to 14 years	98.9%	± 0.3
15 to 17 years	97.3%	± 0.6
18 and 19 years	83.0%	± 1.7
20 to 24 years	49.1%	± 1.6
25 to 34 years	11.3%	± 0.7
35 years and over	2.4%	± 0.1

Source: 2011-2015 American Community Survey

8.3 Percentage age 18-24 enrolled in college

	Estimate	Margin of error
Population 18 to 24 years	83,942	± 65
Enrolled in college or graduate school	51.4%	± 1.2
Males 18 to 24 years	42,317	± 45
Enrolled in college or graduate school	45.6%	± 1.8
Females 18 to 24 years	41,625	± 46
Enrolled in college or graduate school	57.4%	± 1.5

Source: 2011-2015 American Community Survey

8.4 Educational attainment

	COUNT		PERCENTAGE	
	Estimate	Margin of error	Estimate	Margin of error
Population 25 years and over	659,258	± 89	100%	
EDUCATIONAL ATTAINMENT				
Less than 9th grade	45,038	± 1,911	6.8%	± 0.3
9th to 12th grade, no diploma	37,153	± 1,526	5.6%	± 0.2
High school graduate (includes equivalency)	133,756	± 2,458	20.3%	± 0.4
Some college, no degree	95,789	± 1,807	14.5%	± 0.3
Associate's degree	39,468	± 1,195	6.0%	± 0.2
Bachelor's degree	155,991	± 2,083	23.7%	± 0.3
Graduate or professional degree	152,063	± 2,001	23.1%	± 0.3
Percent high school graduate or higher			87.5%	± 0.4
Percent bachelor's degree or higher			46.7%	± 0.4

Source: 2011-2015 American Community Survey

9 Language spoken at home

	COUNT		PERCENTAGE		SPEAK ENGLISH LESS THAN "VERY WELL"	
	Estimate	Margin of error	Estimate	Margin of error	Estimate	Margin of error
Population 5 years and over	911,432	± 8	100%			
LANGUAGE SPOKEN AT HOME						
English only	609,378	± 3,806	66.9%	± 0.4		
Language other than English	302,054	± 3,807	33.1%	± 0.4	111,108	± 2,558
Spanish	178,336	± 2,260	19.6%	± 0.2	76,980	± 2,253
Other Indo-European languages	80,043	± 2,672	8.8%	± 0.3	19,490	± 929
Asian and Pacific Islander languages	31,591	± 1,216	3.5%	± 0.1	12,127	± 860
Other languages	12,084	± 1,148	1.3%	± 0.1	2,511	± 413

Source: 2011-2015 American Community Survey

10 Labor Force Characteristics

10.1 Labor force, employment and unemployment

	TOTAL		IN LABOR FORCE		EMPLOYED		UNEMPLOYMENT RATE	
	Estimate	Margin of error	Estimate	Margin of error	Estimate	Margin of error	Estimate	Margin of error
Population 16 years and over	770,360	± 627	65.4%	± 0.4	60.4%	± 0.4	7.6%	± 0.3
AGE								
16 to 19 years	53,819	± 635	31.2%	± 1.5	22.5%	± 1.2	27.9%	± 2.5
20 to 24 years	57,283	± 61	69.1%	± 1.4	58.3%	± 1.6	15.5%	± 1.5
25 to 29 years	53,890	± 75	84.2%	± 1.2	77.0%	± 1.4	8.4%	± 1.0
30 to 34 years	56,342	± 71	83.8%	± 1.4	77.9%	± 1.4	6.9%	± 0.8
35 to 44 years	128,517	± 137	83.3%	± 0.8	78.5%	± 0.9	5.7%	± 0.6
45 to 54 years	148,698	± 95	83.0%	± 0.7	78.2%	± 0.8	5.7%	± 0.4
55 to 59 years	68,733	± 1,354	78.9%	± 1.1	74.4%	± 1.2	5.7%	± 0.6
60 to 64 years	54,843	± 1,356	66.2%	± 1.3	62.0%	± 1.3	6.4%	± 0.8
65 to 74 years	76,669	± 67	35.7%	± 1.1	33.7%	± 1.1	5.7%	± 0.9
75 years and over	71,566	± 42	9.0%	± 0.6	8.5%	± 0.6	6.0%	± 1.7
RACE AND HISPANIC OR LATINO ORIGIN								
White alone	522,215	± 2,735	63.6%	± 0.4	59.4%	± 0.4	6.5%	± 0.3
Black or African American alone	111,823	± 1,095	65.5%	± 1.4	57.6%	± 1.4	12.1%	± 0.9
American Indian and Alaska Native alone	2,769	± 479	75.0%	± 5.2	69.6%	± 5.6	6.6%	± 3.4
Asian alone	45,000	± 465	67.3%	± 1.3	63.4%	± 1.4	5.8%	± 0.9
Two or more races	16,606	± 1,263	66.4%	± 2.5	59.7%	± 2.7	10.0%	± 2.1
Hispanic or Latino origin (of any race)	166,335	± 359	71.4%	± 0.8	65.2%	± 0.8	8.7%	± 0.6
White alone, not Hispanic or Latino	441,575	± 575	63.0%	± 0.4	59.1%	± 0.4	6.1%	± 0.3
SEX								
Population 20 to 64 years	568,306	± 74	79.7%	± 0.4	74.1%	± 0.5	7.0%	± 0.3
Male	277,007	± 80	85.5%	± 0.6	79.4%	± 0.7	7.1%	± 0.4
Female	291,299	± 103	74.2%	± 0.6	69.1%	± 0.6	6.9%	± 0.3
With own children under 18 years	110,660	± 1,792	72.0%	± 1.0	67.2%	± 1.0	6.7%	± 0.6
EDUCATIONAL ATTAINMENT								
Population 25 to 64 years	511,023	± 90	80.9%	± 0.4	75.9%	± 0.4	6.2%	± 0.3
Less than high school graduate	55,492	± 2,062	68.8%	± 2.2	62.4%	± 2.0	9.2%	± 1.0
High school graduate (includes equivalency)	91,951	± 2,197	75.0%	± 1.0	69.0%	± 1.0	8.0%	± 0.7
Some college or associate's degree	110,121	± 2,043	80.7%	± 0.8	74.7%	± 0.8	7.4%	± 0.6
Bachelor's degree or higher	253,459	± 2,277	85.8%	± 0.5	81.8%	± 0.5	4.6%	± 0.3

Table formula: **LABOR FORCE** = # EMPLOYED + # UNEMPLOYED
% IN LABOR FORCE = LABOR FORCE / TOTAL * 100%
% EMPLOYED = # EMPLOYED / TOTAL * 100%
UNEMPLOYMENT RATE = # UNEMPLOYED / LABOR FORCE * 100%

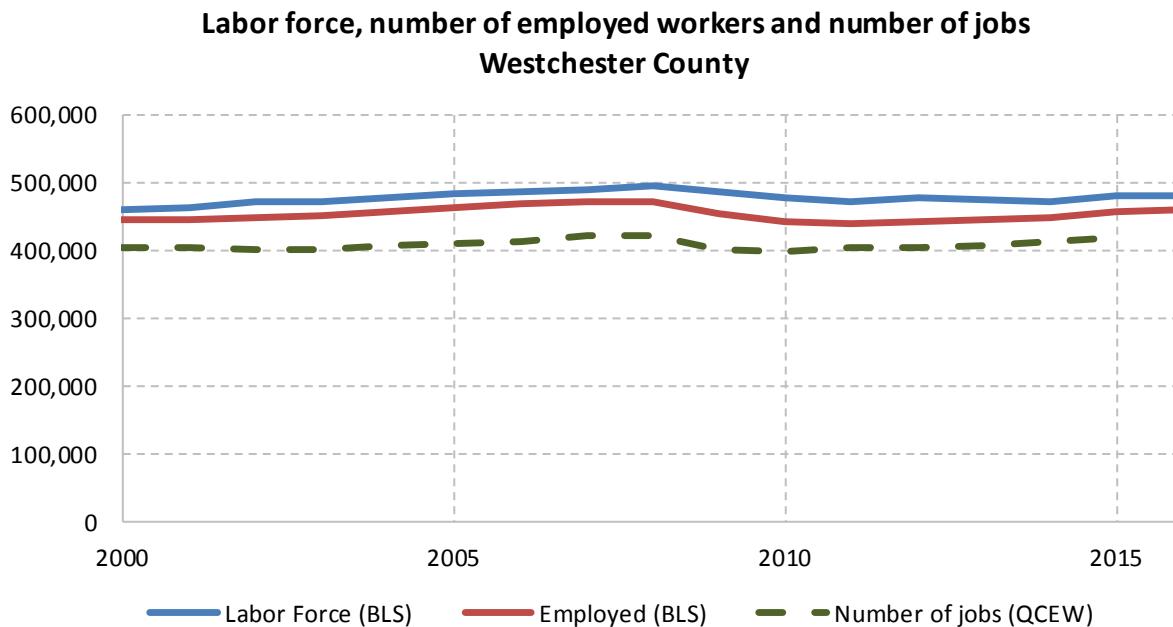
Source: 2011-2015 American Community Survey

10.2 Annual unemployment rate



Source: Bureau Labor Statistics (BLS)

10.3 Employment and number of jobs



Source: Bureau Labor Statistics (BLS) and NY Department of Labor - Quarterly Census of Employment and Wages (QCEW) – annual averages

10.4 Class of worker

		Total	%Male	%Female
Civilian employed population 16 years and over	Estimate	465,097	52.2%	47.8%
	<i>Margin of error</i>	$\pm 2,944$	± 0.3	± 0.3
Private for-profit wage and salary workers:	Estimate	320,859	56.1%	43.9%
	<i>Margin of error</i>	$\pm 3,005$	± 0.4	± 0.4
Employee of private company workers	Estimate	296,020	54.8%	45.2%
	<i>Margin of error</i>	$\pm 2,764$	± 0.4	± 0.4
Self-employed in own incorporated business workers	Estimate	24,839	72.5%	27.5%
	<i>Margin of error</i>	$\pm 1,116$	± 1.6	± 1.6
Private not-for-profit wage and salary workers	Estimate	48,448	36.2%	63.8%
	<i>Margin of error</i>	$\pm 1,301$	± 1.3	± 1.3
Local government workers	Estimate	44,852	42.7%	57.3%
	<i>Margin of error</i>	$\pm 1,486$	± 1.4	± 1.4
State government workers	Estimate	12,774	45.3%	54.7%
	<i>Margin of error</i>	± 740	± 2.6	± 2.6
Federal government workers	Estimate	6,929	58.3%	41.7%
	<i>Margin of error</i>	± 594	± 3.6	± 3.6
Self-employed in own not incorporated business workers and unpaid family workers	Estimate	31,235	51.9%	48.1%
	<i>Margin of error</i>	$\pm 1,043$	± 2.0	± 2.0

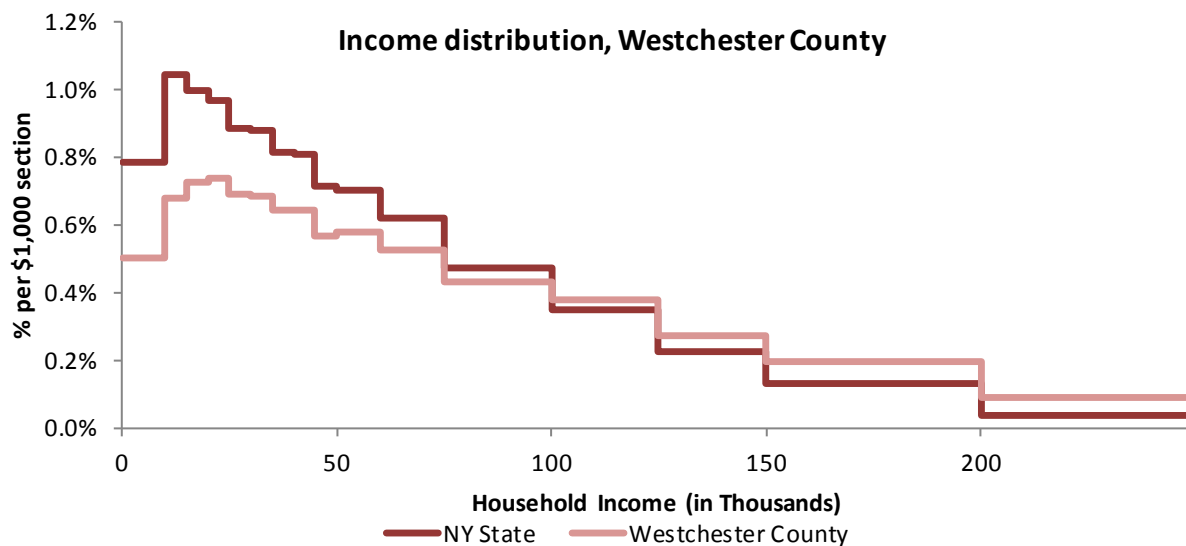
Source: 2011-2015 American Community Survey

11 Household Income

11.1 Income Distribution

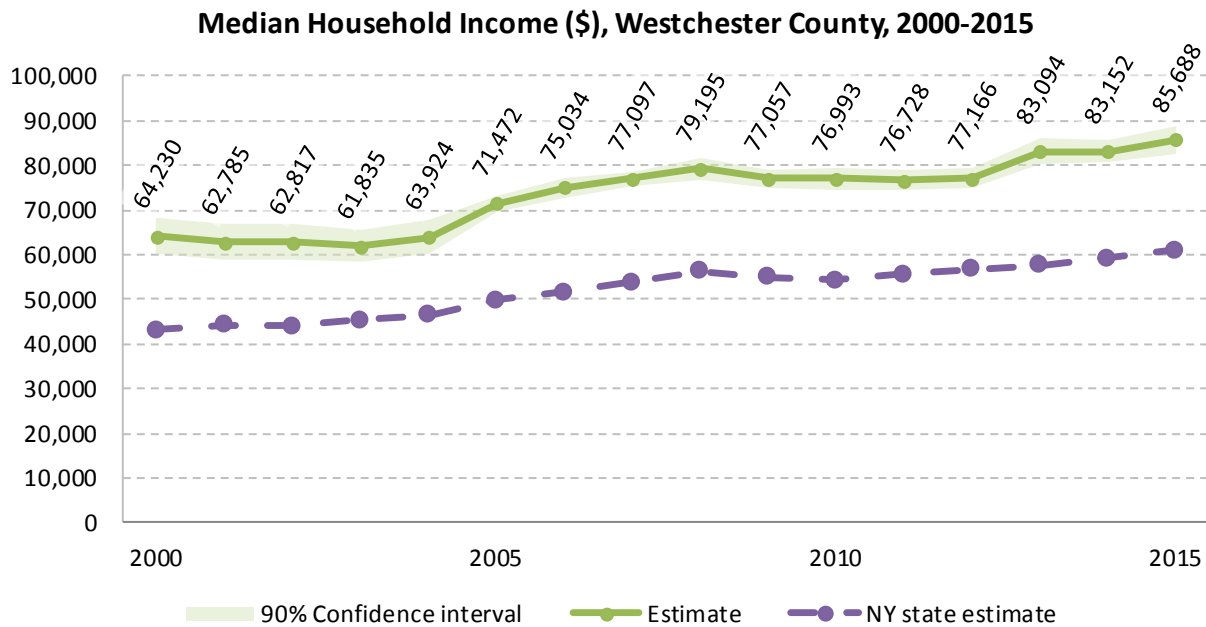
	Estimate	Margin of error	Interval width (in \$1,000)	Est. per \$1,000 section
Total:	341,866	± 1,465		
Less than \$10,000	17,128	± 806	10	1,712.8
\$10,000 to \$14,999	11,592	± 775	5	2,318.4
\$15,000 to \$19,999	12,427	± 755	5	2,485.4
\$20,000 to \$24,999	12,644	± 691	5	2,528.8
\$25,000 to \$29,999	11,795	± 735	5	2,359.0
\$30,000 to \$34,999	11,676	± 800	5	2,335.2
\$35,000 to \$39,999	11,042	± 747	5	2,208.4
\$40,000 to \$44,999	10,997	± 765	5	2,199.4
\$45,000 to \$49,999	9,660	± 705	5	1,932.0
\$50,000 to \$59,999	19,813	± 873	10	1,981.3
\$60,000 to \$74,999	26,881	± 1,050	15	1,792.1
\$75,000 to \$99,999	36,847	± 1,250	25	1,473.9
\$100,000 to \$124,999	32,212	± 1,066	25	1,288.5
\$125,000 to \$149,999	23,391	± 945	25	935.6
\$150,000 to \$199,999	33,262	± 1,199	50	665.2
\$200,000 or more	60,499	± 1,307	-	-

Source: 2011-2015 American Community Survey



Source: 2011-2015 American Community Survey

11.2 Median household income: Trends over time



Source: Small Area Income and Poverty Estimates (SAIPE)

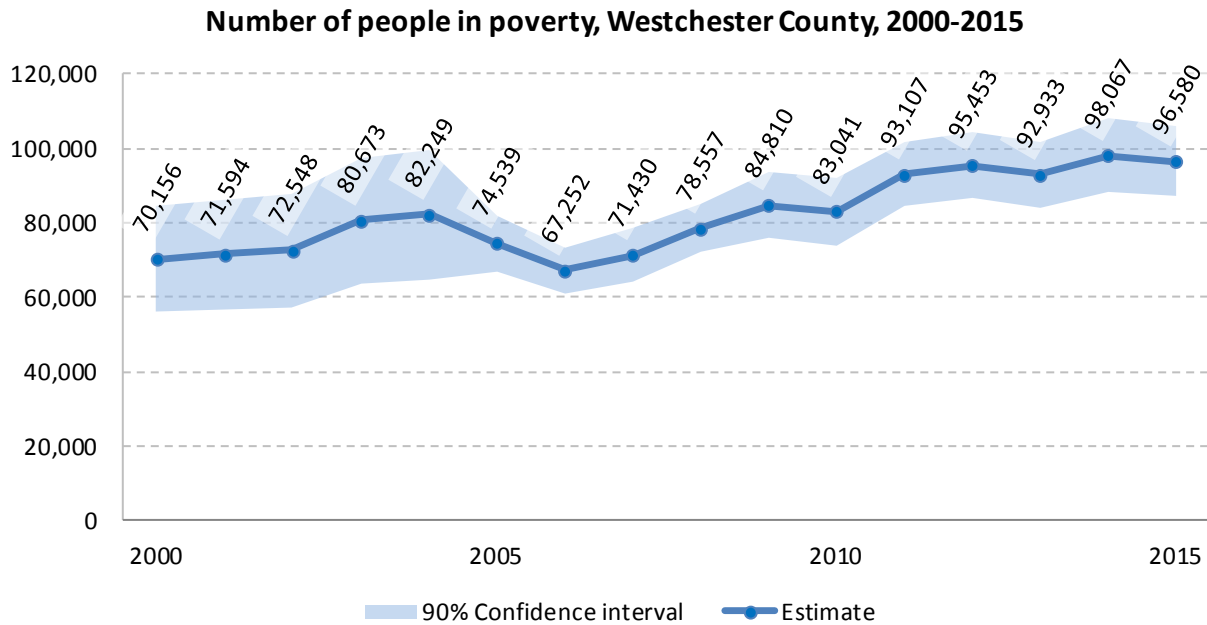
12 Poverty

12.1 Family Income to Poverty Ratio

	TOTAL		PERCENT OF ALL	
	Estimate	Margin of error	Estimate	Margin of error
All families	237,666	± 1,989		
ALL FAMILIES WITH INCOME:				
Below 50 percent of poverty level	6,001	± 597	2.5%	± 0.3
Below 100 percent of poverty level	16,305	± 913	6.9%	± 0.4
Below 125 percent of poverty level	22,817	± 1,054	9.6%	± 0.4
Below 150 percent of poverty level	28,929	± 1,014	12.2%	± 0.4
Below 185 percent of poverty level	38,087	± 1,226	16.0%	± 0.5
Below 200 percent of poverty level	42,187	± 1,254	17.8%	± 0.5
Below 300 percent of poverty level	66,268	± 1,766	27.9%	± 0.7
Below 400 percent of poverty level	90,128	± 1,843	37.9%	± 0.7
Below 500 percent of poverty level	110,117	± 1,849	46.3%	± 0.7

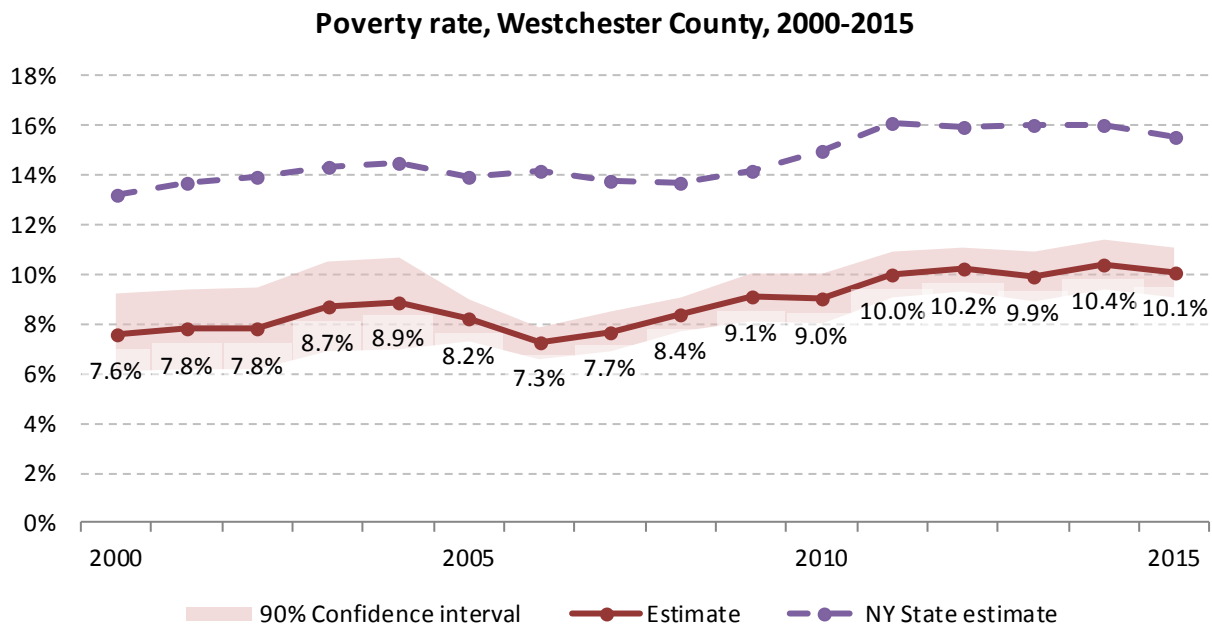
Source: 2011-2015 American Community Survey

12.2 Poverty: Trends over time: Count



Source: Small Area Income and Poverty Estimates (SAIPE)

12.3 Poverty: Trends over time: Rate



Source: Small Area Income and Poverty Estimates (SAIPE)

12.4 Poverty characteristics

	TOTAL		BELOW POVERTY LEVEL		PERCENT BELOW POVERTY LEVEL	
	Estimate	Margin of error	Estimate	Margin of error	Estimate	Margin of error
Population for whom poverty status is determined	943,130	± 1,813	90,752	± 3,361	9.6%	± 0.4
AGE						
Under 18 years	220,377	± 438	27,143	± 1,671	12.3%	± 0.8
Under 5 years	54,804	± 282	7,803	± 715	14.2%	± 1.3
5 to 17 years	165,573	± 360	19,340	± 1,261	11.7%	± 0.8
18 to 34 years	182,909	± 919	22,381	± 1,256	12.2%	± 0.7
35 to 64 years	397,101	± 1,151	29,980	± 1,424	7.5%	± 0.4
65 years and over	142,743	± 480	11,248	± 711	7.9%	± 0.5
SEX						
Male	455,405	± 1,646	39,737	± 1,846	8.7%	± 0.4
Female	487,725	± 740	51,015	± 2,044	10.5%	± 0.4
RACE AND HISPANIC OR LATINO ORIGIN						
White alone	629,817	± 3,592	41,308	± 2,149	6.6%	± 0.3
Black or African American alone	132,728	± 2,217	22,205	± 1,797	16.7%	± 1.3
American Indian and Alaska Native alone	3,523	± 609	479	± 301	13.6%	± 7.4
Asian alone	54,348	± 635	4,516	± 755	8.3%	± 1.4
Hispanic or Latino origin (of any race)	220,760	± 500	40,221	± 2,317	18.2%	± 1.0
White alone, not Hispanic or Latino	523,699	± 876	23,406	± 1,344	4.5%	± 0.3
EDUCATIONAL ATTAINMENT						
Population 25 years and over	648,470	± 1,648	53,718	± 1,969	8.3%	± 0.3
Less than high school graduate	78,172	± 2,222	17,419	± 1,020	22.3%	± 1.2
High school graduate (includes equivalency)	129,997	± 2,495	16,074	± 1,129	12.4%	± 0.8
Some college, associate's degree	133,575	± 2,039	11,104	± 838	8.3%	± 0.6
Bachelor's degree or higher	306,726	± 2,463	9,121	± 745	3.0%	± 0.2
EMPLOYMENT STATUS						
Civilian labor force 16 years and over	499,158	± 2,641	26,895	± 1,487	5.4%	± 0.3
Employed	461,571	± 2,922	19,504	± 1,228	4.2%	± 0.3
Male	241,819	± 2,100	8,777	± 813	3.6%	± 0.3
Female	219,752	± 1,971	10,727	± 770	4.9%	± 0.3
Unemployed	37,587	± 1,363	7,391	± 655	19.7%	± 1.6
Male	20,094	± 961	3,549	± 476	17.7%	± 2.1
Female	17,493	± 870	3,842	± 402	22.0%	± 2.1
WORK EXPERIENCE IN THE PAST 12 MONTHS						
Population 16 years and over	219,752	± 1,971	10,727	± 770	4.9%	± 0.3
Worked full-time, year-round	37,587	± 1,363	7,391	± 655	19.7%	± 1.6
Worked part-time or part-year	20,094	± 961	3,549	± 476	17.7%	± 2.1
Did not work	17,493	± 870	3,842	± 402	22.0%	± 2.1

Source: 2011-2015 American Community Survey

13 Glossary

American Community Survey (ACS) - The American Community Survey is an ongoing survey of the population that provides data every year on a variety of social and economic characteristics—age, sex, race, family and relationships, income and benefits, health insurance, education, veteran status, disabilities, where you work and how you get there, where you live and how much you pay for some essentials. The ACS replaced the information previously gathered by what was known as the “long form” of the decennial censuses. The ACS provides communities, companies and other institutions with current information they need to plan investments and services. Information from the survey generates data that help determine how more than \$400 billion in federal and state funds are distributed each year. Every estimate presented in the American Community Survey, as in other surveys, has an uncertainty associated with it. Often the magnitude of that uncertainty is expressed as the Margin of Error.

Confidence Interval (CI) - indication of the degree of uncertainty about a sample estimates. Confidence intervals have been traditionally reported at the 90, 95 and 99 percent levels. A 90 percent confidence interval can be interpreted, for example, roughly as providing 90 percent certainty that the interval defined by the upper and lower bounds contain the true value of the characteristic. If a Margin of Error is given, the lower bound of the confidence interval is equal to the estimate minus the Margin of Error and the upper bound is equal to the estimate plus the Margin of Error. (See further, Margin of Error definition below.)

County subdivision or Minor Civil Division (MCD) - The Census Bureau geography for primary administrative units below the county level in New York is collectively referred to as county subdivisions or minor civil divisions. These include towns, cities and Indian Reservations.

Decennial Census - the Census of the population and housing taken every 10 years in the United States, at the start of each decade, since 1790.

Employed – either “at work” or “with a job, but not at work”.

Group Quarters Population - all U.S. residents who live in group living facilities including correctional institutions, juvenile facilities, skilled nursing facilities, college residence halls, military barracks, group homes, and workers' dormitories.

Household Population - all U.S. residents who live in housing units such as single family homes, townhouses, apartments, and mobile homes.

Intercensal Population Estimates - estimates produced for the years between two decennial censuses when both the beginning and ending populations are known. They are produced once a decade by adjusting the existing time series of postcensal estimates for the entire decade to smooth the transition from one decennial census count to the next. They differ from the postcensal estimates that are released annually because the difference between the April 1 postcensal estimate and April 1 census count for the end of the decade is redistributed across the estimates for that decade. For dates when both postcensal and intercensal estimates are available, intercensal estimates are preferred.

Labor Force - consists of people classified as employed or unemployed.

Margin of Error (MOE) - a measure of the precision of an estimate at a given level of confidence. The confidence level of a margin of error indicates the likelihood that the difference between the population value (which you

would get if you could measure the whole population instead of a sample) and the estimate is less than or equal to the margin of error. The range from the estimate minus the margin of error to the estimate plus the margin of error is called the confidence interval. All ACS estimates are published with their margins of error at the 90 percent confidence level. Margins of error are useful in assessing the reliability of estimates and whether differences between estimates are significant.

Numeric Population Change - difference between the population of an area at the beginning and end of a time period. It is computed by taking the difference between the population at one point in time (t_1) and some future time (t_2).

Percent Population Change - difference between the population of an area at the beginning and end of a time period, expressed as a percentage of the beginning population. It is computed by dividing the population change ($t_2 - t_1$) by t_1 and multiplying the result by 100.

Population Estimates - The calculated number of people living in an area as of a specified point in time, usually July 1st. The estimated population is calculated using a component of change model that incorporates information on natural increase (births, deaths) and net migration (net domestic migration, net international migration) that has occurred in an area since the latest decennial census. A procedure for estimating the current population using a procedure involving a "base population" value at time $t - 1$, adding to that the births during the interval $t - 1$ to t , subtracting the deaths during that interval $t - 1$ to t , and then adding the net domestic and net international migration that occurred during that interval.

Population Density - Total number of people per areal unit like a square mile or square kilometer.

Population Pyramids - A graphical way of portraying a population's age and sex composition at a given slice in time. The first horizontal bar, constituting the base of the graph, is the youngest age group (typically 0-4) with the number of males in that age group on the left and the number of females in that age group on the right. On top of that age group is another horizontal bar for the next age group (e.g. 5-9) and so forth with the top bar typically for those aged 75 and over. In a population with lots of births and deaths, the shape typically forms a pyramid with a broad base and a narrow top. It is one of the most basic ways to understand population change over time as well as between different geographic units of a similar status (e.g. counties).

Postcensal Estimates - estimates produced for the years after a decennial census when only the beginning population is known. They are produced and revised each year, targeted to July 1 of that year.

Projection - estimated population at some future time based on assumptions about births, deaths, migration, and ages.

Race/Ethnicity - the Census Bureau collects racial data in accordance with guidelines provided by the U.S. Office of Management and Budget (OMB), and these data are based on self-identification. The racial categories included in the census questionnaire generally reflect a social definition of race recognized in this country and not an attempt to define race biologically, anthropologically, or genetically. In addition, it is recognized that the categories of the race item include racial and national origin or sociocultural groups. People may choose to report more than one race to indicate their racial mixture, such as "American Indian" and "White." People who identify their origin as Hispanic, Latino, or Spanish may be of any race. OMB requires five minimum categories: White, Black or African American, American Indian or Alaska Native, Asian, and Native Hawaiian or Other Pacific Islander. Hispanics may be classified as white or black. So we generally separate them out as an ethnic group first.

Unemployed – Not employed, but actively looking for work and available to accept a job.

Unemployment rate – Fraction of the Labor Force that is unemployed.

Urban Area – A densely settled area with at least 2,500 people. If the total number of people is less than 50,000 the Census Bureau calls it an Urban Cluster, otherwise an Urbanized Area.

Vintage - each year, the U.S. Census Bureau produces and publishes estimates of the population for each state and county, as well as the nation as a whole. These are called “vintages.” In producing these vintages, the Bureau utilizes administrative data from a number of sources to estimate 1) the change in population since the most recent decennial census, and 2) the population for each year since the most recent decennial census. With each annual release of population estimates (vintage), the entire time series of estimates beginning on April 1, 2010 is revised and updated.

Vital Statistics - quantitative data concerning a population, such as the number of births, marriages, and deaths.

14 References

Westchester County homepage: <http://www3.westchestergov.com/>

At Cornell:

- Program on Applied Demographics (PAD)
URL: <http://pad.human.cornell.edu/>
 - More county trends: <https://pad.human.cornell.edu/counties/trends1geo.cfm?geo=119>
- Community and Regional Development Institute (CaRDI)
URL: <https://cardi.cals.cornell.edu/>
- Cornell Cooperative Extensions (CCE)
Home page: <http://www.cce.cornell.edu>
 - Westchester local office: <http://westchester.cce.cornell.edu/>

Data sources and background information:

- New York State Data Center
 - <https://labor.ny.gov/nys-data-center/index.shtm>
- U.S. Census Bureau - general
 - QuickFacts: <https://www.census.gov/quickfacts/table/PST045216/36,36119>
 - American FactFinder: <http://factfinder.census.gov/>
- U.S. Census Bureau - population
 - Decennial Census
 - Background: <https://www.census.gov/2010census/>
 - Demographic Profile: http://factfinder2.census.gov/bkmk/table/1.0/en/DEC/10_SF1/SF1DP1/0500000US36119
 - American Community Survey (ACS)
 - Background: <https://www.census.gov/programs-surveys/acs/>
 - Social Data Profile: http://factfinder2.census.gov/bkmk/table/1.0/en/ACS/15_5YR/DP02/0500000US36119
 - Economic Data Profile: http://factfinder2.census.gov/bkmk/table/1.0/en/ACS/15_5YR/DP03/0500000US36119
 - Housing Data Profile: http://factfinder2.census.gov/bkmk/table/1.0/en/ACS/15_5YR/DP04/0500000US36119
 - Demographics Data Profile: http://factfinder2.census.gov/bkmk/table/1.0/en/ACS/15_5YR/DP05/0500000US36119
 - Population estimates:
 - General: <https://www.census.gov/programs-surveys/popest.html>
 - Explorer: <https://www.census.gov/censusexplorer/censusexplorer-popest.html>
- U.S. Census Bureau – Small Area Income & Poverty Estimates (SAIPE)
 - <http://www.census.gov/did/www/saipe/>
- U.S. Census Bureau - Public Use Quarterly Workforce Indicators (QWI) – annual averages
 - <https://qwexplorer.ces.census.gov/static/explore.html>
- U.S. Census Bureau – Building Permits Survey
 - <https://www.census.gov/construction/bps/>

- Bureau Labor Statistics (BLS)
 - Local Area Unemployment Statistics: <http://www.bls.gov/lau/>
 - Quarterly Census of Employment and Wages (QCEW): <https://www.bls.gov/cew/data.htm>
- NY Department of Labor -
 - Labor statistics: <https://labor.ny.gov/stats/index.shtm>
 - Quarterly Census of Employment and Wages (QCEW): <https://labor.ny.gov/stats/LSQCEW.shtm>
- NY State Department of Health
 - Vital Statistics: https://www.health.ny.gov/statistics/vital_statistics/
- Bureau of Economic Analysis (BEA) – Local Area Personal Income and Employment: <http://bea.gov/iTable/iTable.cfm?ReqID=70&step=1>

Alternative sites for data retrieval:

- The Nelson A. Rockefeller Institute of Government – New York State Statistical Yearbooks http://www.rockinst.org/nys_statistics/
- Headwaters Economics: Economic Profile System – Human Dimensions Toolkit <http://headwaterseconomics.org/tools/eps-hdt>
- National Historical Geographic Information System (NHGIS) <https://www.nhgis.org/>
- Social Explorer <http://www.socialexplorer.com/pub/home/home.aspx>
- Stats America <http://www.statsamerica.org/Default.aspx>
- Missouri Census Data Center <http://mcdc.missouri.edu/>
- DataFerret <http://dataferrett.census.gov/>
- Investigative Reporters and Editors (IRE) Census project <http://census.ire.org/>