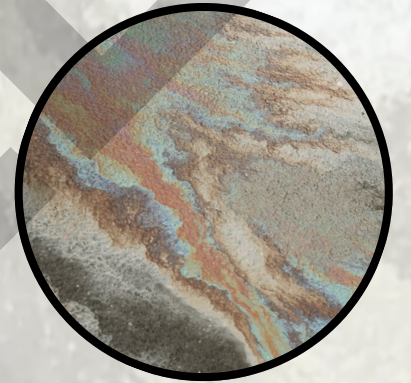


# Illicit Discharge:

## What are they? What to do if you see one?

**An illicit discharge is a discharge to stormwater system that is either not entirely composed of stormwater or is not permitted.**



**Allowable discharges typically include water from emergency firefighting activities, potable water, and discharges from regulated SPDES facilities.**

**Illicit discharges contribute pollutants to our waterbodies making them unsafe for recreation or consumption.**



**If you see or suspect an illicit discharge, report it to [operator name] at [email or phone number].**

[Your Logo Here]



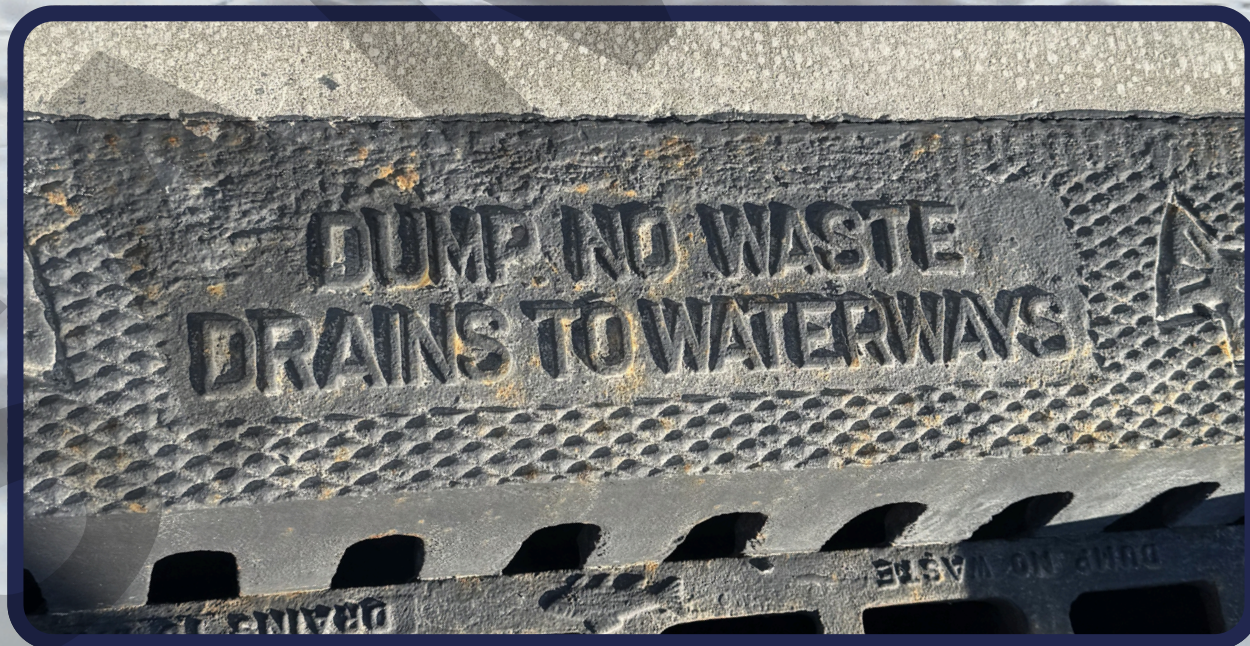
# Only Rain Down the Drain!

**Storm drains lead directly to local waterways  
with no treatment plants in between!**

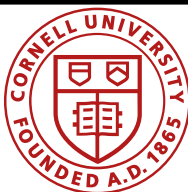
Do not dump materials such as motor oil, antifreeze,  
paint, or detergent down the drain.

**Report issues to [your municipality or representative]**

**Visit or call: [your contact here]**



[Your Logo Here]



**Cornell Cooperative Extension  
Rockland County**



# Storm drains lead directly to our rivers and lakes!

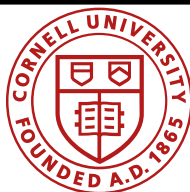
Therefore, any pollutant entering a storm drain  
will end up in our waterbodies!



Visit: [\[insert link\]](#) for  
more information



[Your Logo Here]



**Cornell Cooperative Extension**  
Rockland County



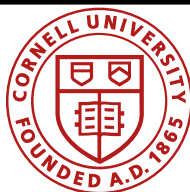
# CATCH BASINS DO NOT LEAD TO TREATMENT PLANTS!



**Storm drain markers help  
remind visitors and residents  
where the drain leads.**

For more information on where  
to get storm drain markers for  
your community visit:  
[your link here]

[Your Logo Here]

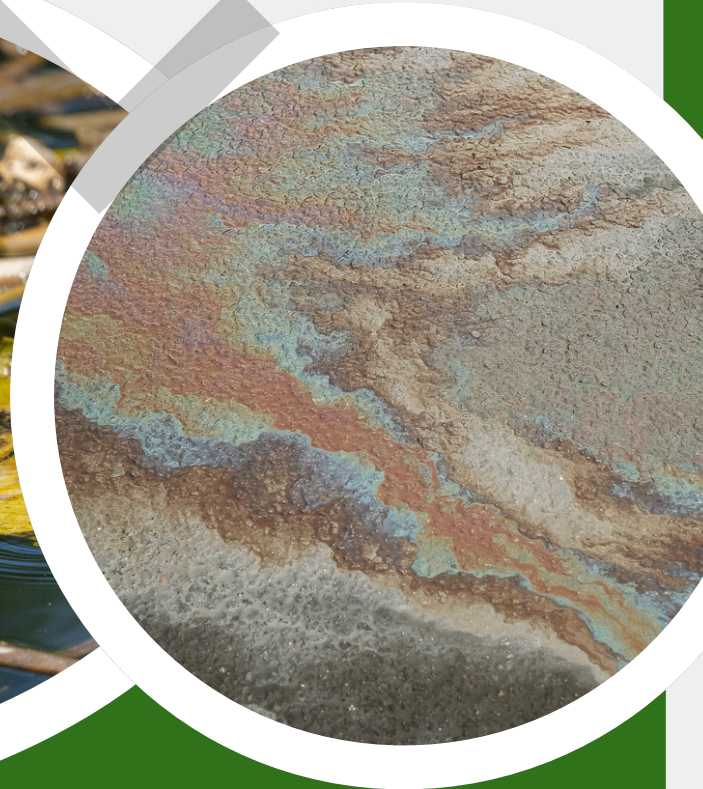


**Cornell Cooperative Extension  
Rockland County**



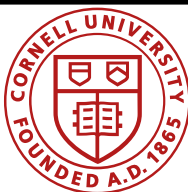
# Did You Know?

Stormwater carries pollutants like trash, road salt, and motor oil to our streams, lakes and rivers.



Help protect our waterways by properly disposing of waste!  
Report contaminated runoff to your local municipality:  
[insert link]

[Your Logo Here]



**Cornell Cooperative Extension**  
Rockland County

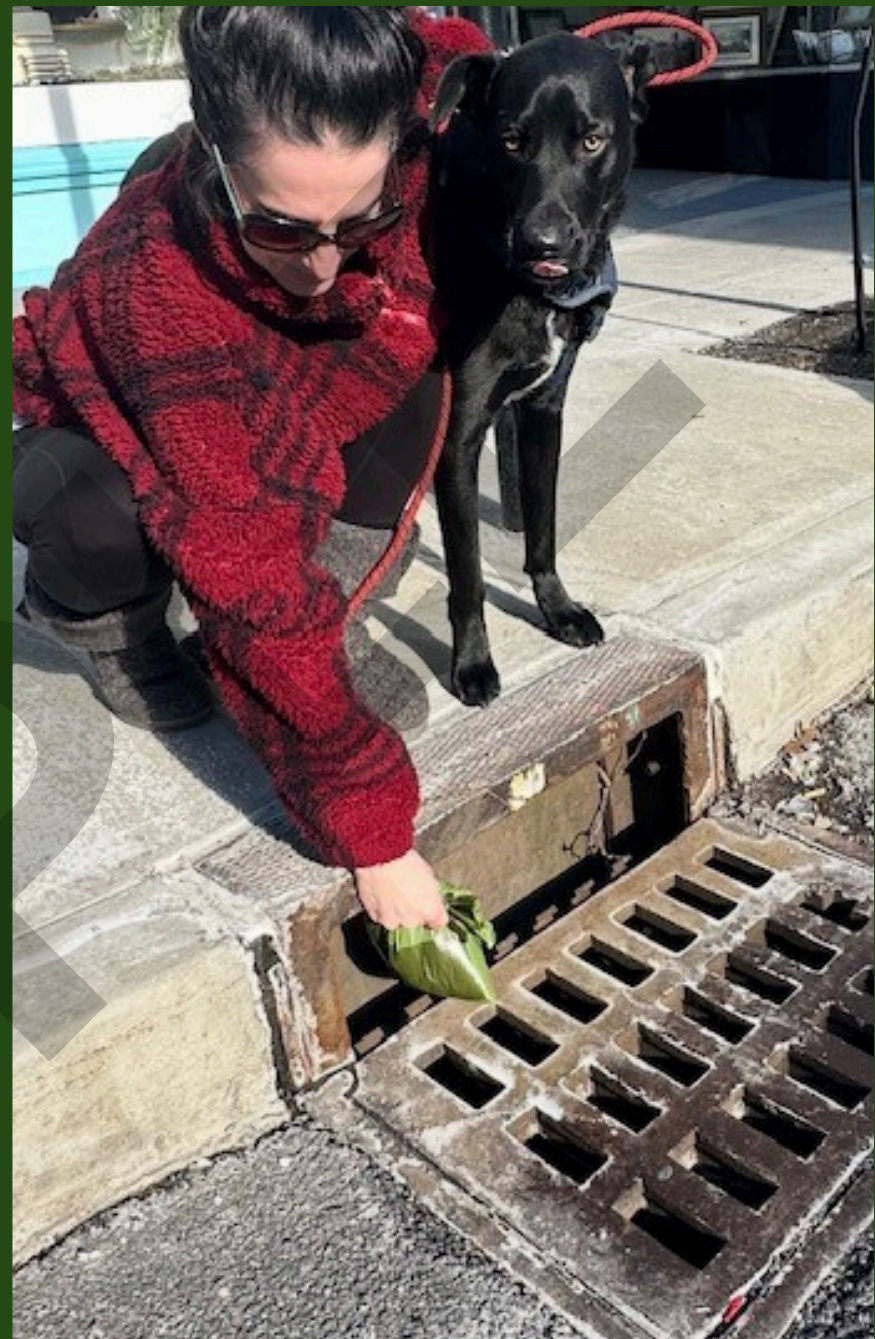


# DO NOT THROW TRASH INTO STORM DRAINS

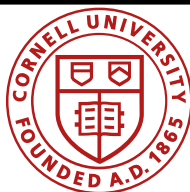
They are **NOT** a trash can for dumping your waste and yard debris.

Storm drains lead directly to nearby waterways therefore your trash **END UP IN OUR CREEKS AND STREAMS.**

MAKE SURE TO ALWAYS PROPERLY DISPOSE OF WASTE!



[Your Logo Here]



Cornell Cooperative Extension  
Rockland County



# POLLUTED STORMWATER RUNOFF: A Major Source of Water Contamination

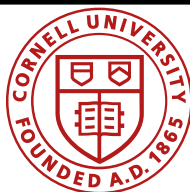
Keep storm  
drains clean to  
protect our  
drinking water!



For more information, visit:

[www.dec.ny.gov/environmental-protection/water/water-quality/stormwater](http://www.dec.ny.gov/environmental-protection/water/water-quality/stormwater)

[Your Logo Here]



**Cornell Cooperative Extension**  
Rockland County

